

Mint Museum Randolph in Charlotte, NC, Features American Art Pottery

The Mint Museum Randolph in Charlotte, NC, is presenting the exhibit, *Aesthetic Ambitions: Edward Lycett and Brooklyn's Faience Manufacturing Company*, featuring unique examples of American art pottery from the late 1800s, on view in the Bridges & Levine Galleries, Through Feb. 26, 2012.



Edward Lycett, American (born in England), 1833-1910, Faience Manufacturing Company (1881-1892), Brooklyn, New York. Covered Vase, circa 1887, cream-colored earthenware, painted over ivory-glazed and luster ground with polychrome enamels and flate gold decoration. Lora Robins Gallery of Design from Nature, University of Richmond Museums, Gift of Emma and Jay Lewis.

During the 1880s, the Faience Manufacturing Company (1881-1892), of Greenpoint, Brooklyn, earned critical acclaim for producing ornamental wares that introduced a new standard of excellence in American ceramics. These bold and eclectic wares displayed a synthesis of Japanese, Chinese, and Islamic influences characteristic of the Aesthetic Movement style. The firm owed its artistic and commercial success to Edward Lycett (1833-1910), an English china painter who became its artistic director in 1884.

Edward Lycett immigrated to New York City in 1861. His early career included a White House commission to paint additional pieces of the Lincoln administration's porcelain dinner service for President Andrew Johnson. He held teaching positions in St. Louis, MO, and Cincinnati, OH. In 1884, Lycett began his employment with the Faience Manufacturing Company, where he experimented with ceramic bodies and glazes, and designed opulent wares. He supervised a team of talented artists, including James Callowhill (1838-1917) of the English firm Worcester Royal Porcelain, who decorated the vessels with exotic motifs in vibrant hues and costly gold paste. Lycett and his team of decorators produced pieces that were sold in the foremost jewelry and china shops throughout the United States, such as Tiffany & Company in New York and Bailey, Banks and Biddle in Philadelphia.

Nearly forty superb objects drawn from public and private collections will be on display, including vases, ewers, plates, and other decorative wares. The objects illustrate Lycett's talent and adaptability to stylistic changes over the course of his nearly fifty-year career. Also on view in the exhibition are Lycett's formula books, family photographs, and ephemera that illuminate the life and work of this prominent figure in American ceramic history.

The exhibition is organized and circulated by the University Of Richmond Museums, Virginia. A fully illustrated catalogue with an essay by the exhibition's curator Barbara Veith, independent scholar of American ceramics and glass, New York, is available for purchase in The Mint Museum Shops.

With over 200,000 visitors each year, The Mint Museum is comprised of two dynamic facilities: the newly opened Mint Museum Uptown and the historic Mint Museum Randolph. As the oldest art museum in North Carolina, The Mint Museum offers its visitors a remarkable opportunity to experience art through two facilities that feature a global collection of over 33,000 objects spanning over 4,500 years of human creativity.



Edward Lycett, American (born in England), 1833-1910, Faience Manufacturing Company (1881-1892), Brooklyn, New York. Vase, 1886-1890, cream-colored earthenware. The Mint Museum, Gift of Emma and Jay Lewis.

Located in what was the original branch of the United States Mint, the Mint Museum Randolph opened in 1936 in Charlotte's Eastover neighborhood. Today, intimate galleries invite visitors to engage with the art of the ancient Americas, ceramics and decorative arts, historic costume and fashionable dress, European, African, and Asian art, among other collections. Resources include a reference library with over 18,000 volumes, a theater featuring lectures and performances, and a Museum Shop.

For further information check our NC Institutional Gallery listings, call the Museum at 704/337-2000 or visit (www.mintmuseum.org).

Hodges Taylor Art Consultancy in Charlotte Offers Works by Aaron Tucker



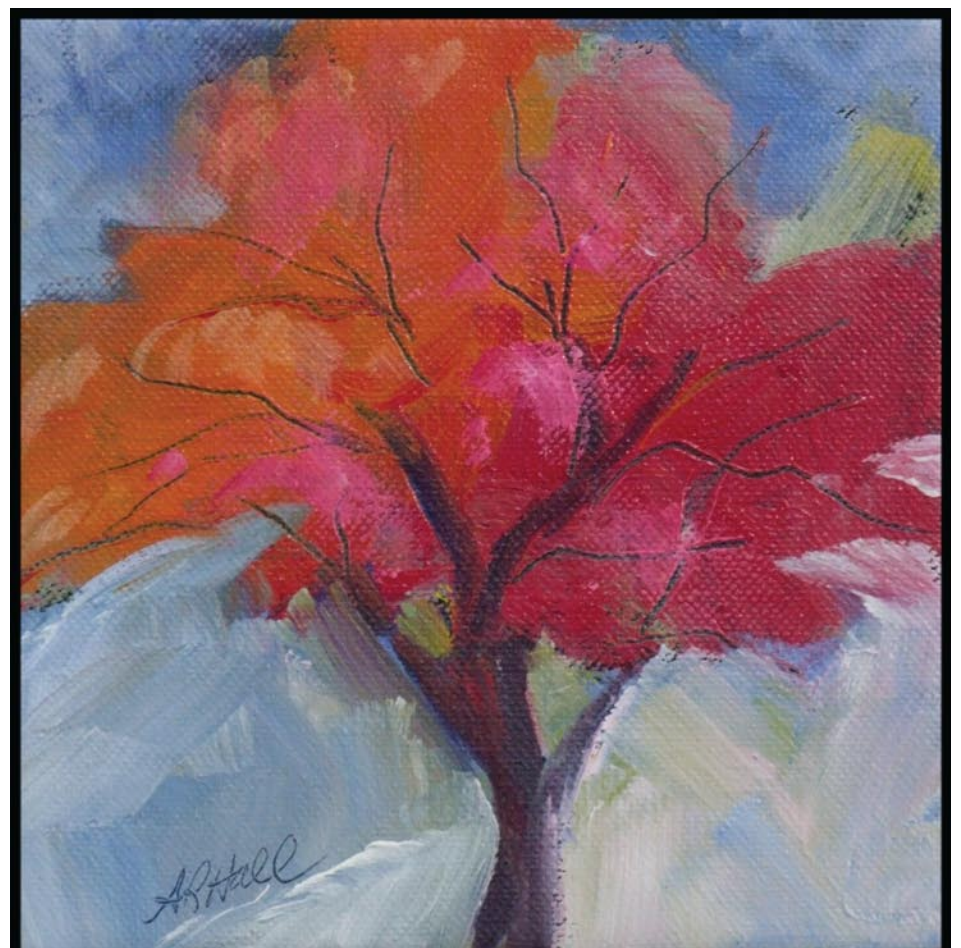
Work by Aaron Tucker

Hodges Taylor Art Consultancy in Charlotte, NC, is presenting an exhibit of works by Aaron Tucker, on view through Oct. 31, 2011.

Tucker is a southern artist who finds inspiration in marks, scratches, scrapes and half-images. His work is aged and weathered, and the color is raw. He draws heavily from antique children's books, isolating images then replacing original content with a new, fractured perspective.

Tucker has always worked in both oil paint and collage, using one to influence the other. "Several years ago I began collecting colored scraps of paper, which I found useful in developing the structure for paintings.

continued above on next column to the right



A Stormy Fall Day • acrylic on canvas • 6" x 6"

Annette Ragone Hall

ragone.com

704-798-9400 • annette@arhall.com

Annette's studio is located in Rail Walk Studios & Gallery at 413 N Lee Street, Salisbury, NC, in the Rail Walk Arts District. RWS&G is open Thursday - Saturday from 11 a.m. - 4 p.m., or contact Annette to make an appointment to see her work.

Finding marks left behind by children in books from years past drove me toward scratching marks into wet paint, mimicking the uninhabited hand."

Tucker received a BFA from Ball State University. His works have been exhibited throughout the US including: Gallery International, Baltimore, MD; Treehouse Gallery, Los Angeles, CA; Mitchell Place Gallery, Muncie IN; Nicole Gallery, Chi-

cago, IL; and Blue Spiral 1, Asheville NC.

Tucker's work can be found in the following collections: Safeco, Indianapolis, IN; Sterling Publishing, New York, NY; UNC, Chapel Hill, NC; Levine Children's Hospital, NC; and SPX Corporation.

For further information check our NC Commercial Gallery listings, call the gallery at 704/334-3799 or visit (www.hodgestaylor.com).

Shain Gallery in Charlotte, NC, Features Works by Darren Young

Shain Gallery in Charlotte, NC, will present the exhibit, *Fresh Tonal Paintings by Darren Young*, on view from Oct. 7 - 31, 2011. A reception will be held on Oct. 7, from 6-9pm.



Work by Darren Young

Young began his formal art studies at East Carolina University in Greenville, NC, graduating with a Bachelor of Fine Arts Degree in Painting. In 1998 Young was the recipient of a Graduate Scholar-

ship to Indiana University at Bloomington, earning his Master's Degree.

Young's emphasis on painterly brushstroke and strong shifts from tonality to a dramatic juxtaposition of warm and cool tones combine to create imaginary landscapes with an ethereal quality.

For several years, Young has taught art and design at universities and campuses across the United States in: Indiana, Colorado, and North and South Carolina. He has also worked as a painting instructor in France.

Located in beautiful Myers Park, Shain Gallery has been on the forefront of the North Carolina art scene since 1998. The gallery represents many leading national and regional artists, and was recently voted yet again the "Best of the Best" for best Charlotte gallery.

For further information check our NC Commercial Gallery listings, call the gallery at 704/334-7744 or visit (www.shaingallery.com).

The deadline each month to submit articles, photos and ads is the 24th of the month prior to the next issue. This would be Oct. 24th for the November 2011 issue and Nov. 24 for the December 2011 issue. After that, it's too late unless your exhibit runs into the next month.

But don't wait for the last minute - send your info now.

And where do you send that info?

E-mail to (info@carolinaarts.com) or mail to:

Carolina Arts, P.O. Drawer 427, Bonneau, SC 29431