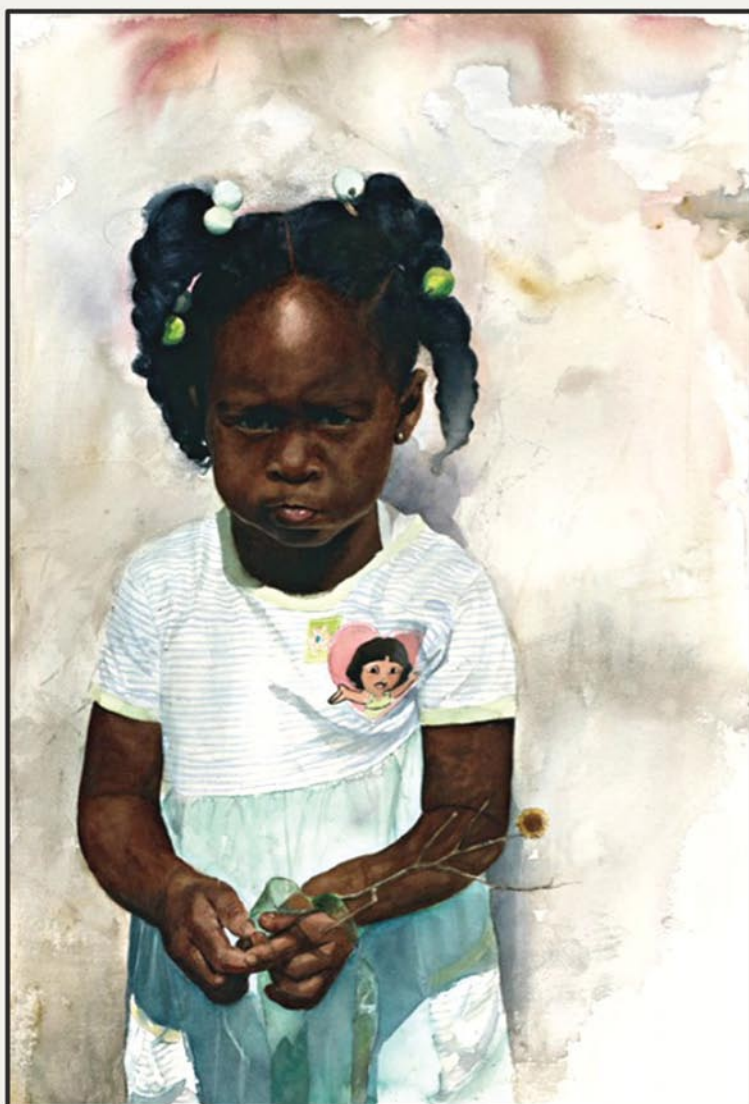


WELLS GALLERY

"BROKEN FLOWERS" EARL B. LEWIS WATERCOLOR 42 x 30 UNFRAMED



VISIT OUR TWO LOCATIONS

125 MEETING STREET CHARLESTON, SC 29401 (843) 853.3233



ONE SANCTUARY BEACH DR. KIAWAH ISLAND, SC 29455 (843) 576.1290
(IN THE SANCTUARY HOTEL)

WWW.WELLSGALLERY.COM



Intention
Oil on Canvas, 72 x 66 inches

Eva Carter

Plan a visit to the new Downtown Studio for a private showing of latest works.

New Downtown Studio
6 Gillon Street, Suite 8 (second floor)
Charleston, SC 29401
Just north of the Old Exchange Building

By Appointment Only
Please call (843) 478-2522
www.EvaCarterGallery.com

Dog & Horse Fine Art

continued from Page 6

lower Manhattan in horse country. More recently, the economic crisis that began in 2008 has required all businesses to think more creatively. Despite the hardships from which many have suffered, the gallery has survived and thrived.

Dog & Horse Fine Art & Portraiture, established in 2001 by Jaynie Milligan Spec- tor, is a source for dog and horse paintings

and sculptures by top quality nationally and internationally known artists in the United States and Europe who create 21st century works of art, as well as portraits of animals and their human counterparts.

For further information check our SC Commercial Gallery listings, call the gallery at 843-577-5500 or visit (www.dogandhorsefineart.com).

The Treasure Nest Art Gallery in Mount Pleasant, SC, Features Works by Karen Burnette Garner

The Treasure Nest Art Gallery in Mount Pleasant, SC, will present the exhibit, *Lowcountry VII – New Works by Karen Burnette Garner*, on view from Oct. 15 through November 30, 2011. A reception will be held on Oct. 15, from 10am-6pm.

The exhibition continues Garner's tradition of creating lowcountry landscape paintings, with over 30 new original works in acrylic on canvas shown. This will be the seventh consecutive year for the show and has become a highly anticipated art event for area collectors. While Garner's work is available throughout the year at the gallery, the annual show marks the release of a substantial collection of new work.

Growing up as a Georgia native, Garner gravitated toward the eastern coast of the Carolinas from childhood. "It was a favorite destination for our family, and I quickly became enamored with the natural beauty of the area. In over ten years of painting coastal scenes, I still see places that I can't wait to get into the studio and capture on canvas. The lowcountry speaks to the heart in a deep way that other places simply can't match. It stays with you, no matter how far you travel. It calls you to 'come home' and

won't be resisted," she says. Her growing list of collectors serves as confirmation that her interpretations hit close to home, reminding viewers of many favorite spots in and around the Charleston area.



Work by Karen Burnette Garner

Garner has been represented by The Treasure Nest Art Gallery in Mount Pleasant, SC since 2002, and from the beginning, her work caught the interest of the public. Capturing the colors and moods of the lowcountry has become one of her trademarks, and her original works offered through the gallery continue to attract attention. She also collaborates with collectors to create

continued above on next column to the right

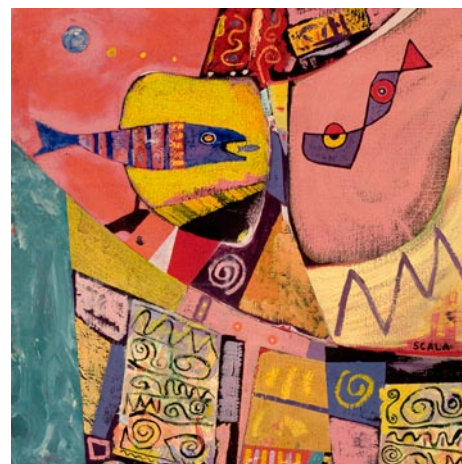
site specific works of art on commission, and will be on hand at the opening reception to confer with interested clients.

Garner's works have been collected by art connoisseurs worldwide. Her clients include AT&T, Wachovia, Thomas and Hut- ton Engineering (Myrtle Beach), Chateau Elan Winery, Holston Valley Hospital, University of Georgia, and Larry "Chipper"

Jones of the Atlanta Braves. She is also a published illustrator and award-winning poet, regularly published in *The Reach of Song*, a yearly anthology of verse published by the Georgia Poetry Society.

For further information check our SC Commercial Gallery listings, call the gallery at 843/216-1235 or visit (www.treasurenestartgallery.com).

Greenway Studio in Charleston, SC, Offers Works by Peter Scala



Work by Peter Scala

Greenway Studio in Charleston, SC, is present the exhibit, *Ramblings*, featuring the fantastical surrealism of Peter Scala, on view through Oct. 15, 2011.

Scala was born in Greenwich Village, NY. He was greatly influenced as a child living at a Hudson Street painter's studio - which was the workplace of his father Victor Scala (Cubist) and Franz Kline (Abstract Expressionist).

Scala has traveled extensively through- out Africa and Asia; which is a firm in- spiration in many of his paintings. In this array called, *Ramblings*, Scala renders his paintings in egg tempera and oil paints, delicately applying multiple layers of color, resulting in a chatoyant and dream- like display.

Greenway Studio is located at 10 Dan- iel Street, just off Hwy. 17 South, between Gene's Haufbrau and St. Andrews Shop- ping Center in Charleston, SC.

For further information call the studio at 843/766-4330 or visit (www.greenwaystudiollc.com).

Charleston County Public Library in Charleston, SC, Features Works by Laura Liberatore Szweda

The Charleston County Public Library in Charleston, SC, will present an exhibit, *Landscape Abstractions*, featuring recent oil paintings by Laura Liberatore Szweda, on view in the Saul Alexander Gallery from Oct. 1 - 31, 2011.

The oil paintings on exhibit are a result of Szweda's personal response to the spiritual aspects of the light and air of the Lowcountry she now claims as home. She has also been influenced by other artists

continued on Page 8