

Charleston County Public Library

continued from Page 7



Work by Laura Liberatore Szweda

who have abstracted Nature and whose works exhibit to her the power of the paint: Mark Rothko, Joan Mitchell, and Vincent VanGogh; each of whom were inspired by Nature, observed, contained inside themselves and interpreted on canvas. Believing what Aristotle once said, "a work of art should imitate the motions of the mind and not the external arrange-

ment of facts," she paints her response to Nature observed.

Szweda earned an MFA in painting from the University of Maryland, a BFA, magna cum laude from the Maryland Institute College of Art in Baltimore. She has taught art in college, at the Gibbes Museum Studio in Charleston, and privately. Her work has won numerous prizes in juried art shows. Her Mixed media entry won First Prize in the 2002 *Piccolo Spoleto Juried Art Show*, in Charleston.

One of Szweda's paintings is in the collection, "An American Album," permanently installed in the library of the National Museum of Women in the Arts, Washington, DC. Many of her works are part of private and corporate art collections. One piece is published in Barbara Hagerty's book, *Handbags, A Woman's Most Trusted Accessory*.

For further information check our SC Institutional Gallery listings, call the Library at 843/805-6801 or visit (www.ccpl.org).

Charleston Artist Guild in Charleston, SC, Features Works by Andrea Hazel



Work by Andrea Hazel

The Charleston Artist Guild in Charleston, SC, will present an exhibit of works by Andrea Hazel, on view in the Charleston Artist Guild Gallery, from Oct. 1 - 31. A reception will be held on Oct. 7, from 6-8pm.

Hazel works in oils and watercolors. She started painting at the age of 53 after a career as a college math instructor and a photographer. She has since studied watercolor painting in workshops with several distinguished artists including Charles Parnelle, Mary Whyte, Pat Dews, John Salminen, Tony Van Hasselt and Steve Rogers. Hazel most recently studied oil painting at the College of Charleston with inspiring artists Sharon Lacey, Tony Csavas and Cliff Peacock.

Hazel is a native of Charleston having grown up over a store front in midtown Charleston. That allowed her to observe the daily coming and goings of neighborhood people in everyday life. "I grew up in midtown Charleston. Both my father and my grandfather were restoration carpenters, so I grew up with awareness and appreciation for Charleston houses and architecture." Her work clearly represents these influences.

For further information check our SC Institutional Gallery listings, call the gallery at 843/722-2454 or visit (www.charlestonartistguild.com).

Robert Lange Studios in Charleston, SC, Offers Works by Nathan Durfee

Robert Lange Studios in Charleston, SC, will present the exhibit, *Their Masquerade in Feathers & Thread*, featuring works by Nathan Durfee, on view from Oct. 7 - 26, 2011. A reception will be held on Oct. 7, from 5-8pm.



Work by Nathan Durfee

The exhibit features the work of the contemporary narrative artist Nathan Durfee. This latest series of paintings represent the next chapter in a continuing storyline that is both bittersweet and allegorical.

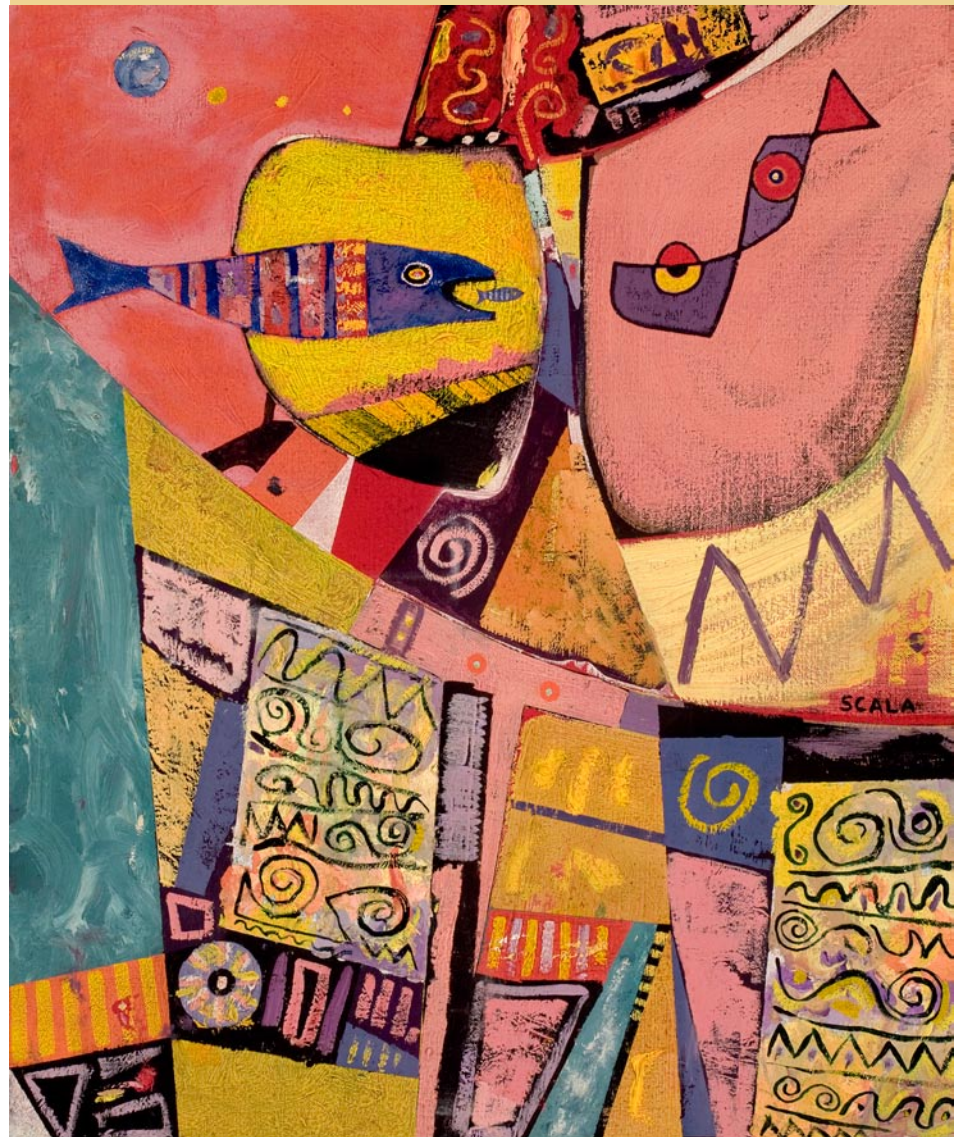
Durfee's fanciful storylines have led to a cult following in Charleston where the 28-year-old artist resides. He was voted best visual artist two years running by the *Charleston City Paper* (over 60,000 people vote each year) and was recently profiled in *Charleston Magazine*. His last solo exhibition held at RLS this past October was viewed by over a thousand people on opening night.

One collector's comment as she walked through last year's exhibit was, "I think Nathan's so popular because there's an honesty in his work that is sometimes witty, sometimes playful, and sometimes sad." Carrie Cooney continued, "I find that as I experience the show I can see different facets of the artist's nature resonating within each of his characters and I can't help but feel like I'm part of a secret."

Durfee's emblematic works speak not only of the artist's own existential journey but also a universal human experience. Often painted in series the characters experience everything from heart break to frustration as reactions to internal and external stimuli.

"I am a storyteller without a story," says Durfee. "These paintings reveal little spans of time in a world I haven't quite figured out yet. I'm comfortable with not knowing the big picture yet; instead, I try to focus on the *continued above on next column to the right*

SCALA Surrealist Painter



"Dusk (at the beach)"

www.peterscala.com
Studio: 843-225-3313

the lessons and feelings captured in these moments."

Visitors to this most recent exhibition are provided with another layer of storyline as Durfee's characters garnish suits and masks. The artist said, "I'm playing with the idea of masks both as subjects and the idea of metaphors. Masks have the ability to simultaneously hide and reveal facets of ourselves." No work better demonstrates the painter's ability to capture and present difficult human emotions than *Carlton's Love Lost in Translation* an 8-by-10 inch oil on panel work. The painting depicts a giraffe, hidden behind a homemade bird mask with buttons as eyes, professing his love to a tiny bird on a branch. The mismatch of textures, colors and unlikely characters, plays on the timeless story of star-crossed lovers.

Durfee's painting style is a contemporary update of folk meets pop-surrealism and continually exceeds the expectations of collectors. This series in particular demonstrates Durfee's ability to meticulously render small details and textures and in the same painting, the liberty to softly paint

fluffy clouds.

"I'm now more informed with my style and can more freely incorporate different textures and painting techniques," says Durfee, "choosing the level of detail that best lends itself to the focus of the storyline." One of the pieces for the show, *Consulting the Manual* is a painting of a woman carrying three yellow chicks on her back. She sits longingly at the window reading a how-to manual with a bird mask rubber banded around her head. The 16-by-20 inch oil on panel piece captures the emotion of motherhood, and with the addition of Durfee's signature execution of colors, the discrepancy between mother and chicks becomes more evident.

Durfee is a graduate of Savannah College of Art and Design and has exhibited with different galleries across the United States and is feverishly collected in Germany as well as Japan.

For further information check our SC Commercial Gallery listings, call the gallery at 843/805-8052 or visit (www.robertlangestudios.com).

The deadline each month to submit articles, photos and ads is the 24th of the month prior to the next issue. This would be Oct. 24th for the November 2011 issue and Nov. 24 for the December 2011 issue. After that, it's too late unless your exhibit runs into the next month. E-mail to (info@carolinaarts.com) or mail to: Carolina Arts, P.O. Drawer 427, Bonneau, SC 29431

THE TREASURE NEST Art Gallery

Extensive selection of high quality oil paintings and frames at truly wonderful values.

1055 Johnnie Dodds Blvd.
Crickentree Village Shopping Center
Mt. Pleasant, SC • Mon-Sat, 10am-6pm
843 216 -1235 • www.treasurenestartgallery.com

Experience Charleston's
history
through
art.

Gibbes

GIBBES MUSEUM OF ART

135 Meeting Street • Charleston, SC
843-722-2706 • gibbesmuseum.org

The Finishing Touch

Original Art, Fine Prints,
Custom Framing, and
Interior Design by appointment

140-A West Richardson Ave.
Summerville, South Carolina 29483
843/873-8212
Mon. - Fri., 10am-6pm; Sat. 10am - 5pm