

# The 68th Annual Craft Fair of the Southern Highlands Takes Place in Asheville, NC - Oct. 15-18, 2015

Join us for the 68th Annual Craft Fair of the Southern Highlands at the US Cellular Center in downtown Asheville, NC, Oct. 15 – 18, 2015. Nearly 200 juried artists of the Southern Highland Craft Guild will be selling works of clay, metal, wood, jewelry, fiber, paper, natural materials, leather and mixed media. With styles ranging from traditional to contemporary, the Fairs showcase the rich talent, diversity and craft mastery of Guild members.



Work by Jason Green

The Craft Fairs have a proud tradition and history of excellence by representing the Southern Highland Craft Guild, a non-profit organization formed in 1930. The Fairs began in 1948 as a way to provide a regional market for the mountain craftspeople. Since that time, the Craft Fairs have set the standard for fine craft shows across the country. Each year in July and October craft collectors and gallery owners from across the country come to Asheville to see the show. They are joined by western North Carolina residents and tourists who appreciate the quality and history of the show, knowing it is an ideal destination for shopping and inspiration. Nearly 20,000 visitors to the Fairs each year invest in the regional and local economies while supporting artists working in the Appalachian mountains, and by spending a summer or fall weekend in beautiful Asheville, NC.

In addition to providing a retail market



Work by Cheryl Hevr dys

for juried members, the Guild hosts craft demonstrations during the Fairs. A strong part of the Guild's mission is to educate the public about the history of crafts in this region, various craft techniques, and an appreciation for fine crafts. The October show features raised slip ceramic decorating, wooden dovetailed boxes, spinning and carding. Visit ([www.craftguild.org](http://www.craftguild.org)) press page for a complete list of scheduled craft demonstrations.



Work by Buncombe Turnpike

Beginning on Friday during each Craft Fair, mountain musicians perform live on the arena stage. Since the first fair in Gatlinburg in 1948, the music of the area has been woven into the fabric of the Craft Fair experience. From old time to bluegrass, this tradition is kept alive today. Visit ([www.craftguild.org](http://www.craftguild.org)) press page for a complete list of performances.

“Creating a world in which craft and  
continued above on next column to the right

other native talents can flourish – this is the Guild's legacy. The craftspeople of Southern Appalachia are always aware of tradition and forever renewing themselves from the old sources of nature, family, spiritual life and the desire to share one's gifts with others,” says Jan Davidson, Director, John C. Campbell Folk School.

The Southern Highland Craft Guild is a non-profit, educational organization established in 1930 with headquarters at the Folk Art Center on the Blue Ridge Parkway in Asheville, NC. The Guild region covers the mountain counties of nine southeastern

states from Maryland to Alabama, representing over 900 craftspeople. The Craft Fairs are one of the ways in which the Guild fulfills its mission which is to bring together the crafts and craftspeople of the Southern Highlands for the benefit of shared resources, education, marketing and conservation.

Hours are: 10am-6pm, Thur.-Sat., and 10am-5pm, Sun. Admission is adults \$8, children under 12 free, and group discounts are available.

For further info check our NC Institutional Gallery listings, call the Guild at 828/298-7928 or visit ([www.craftguild.org](http://www.craftguild.org)).

## Folk Art Center in Asheville, NC, Features Works by New Members of Southern Highland Craft Guild

The Folk Art Center in Asheville, NC, is presenting *Solid Roots*, featuring works by new members of the Southern Highland Craft Guild, on view in the Center's Main Gallery, through Jan. 17, 2016.

This biannual show features twenty-two members who have been accepted into the Guild since 2013. Ranging from ceramic sculpture to felted wall-hangings, *Solid Roots* displays the Guild's tradition and support of fine craftsmanship for 85 years.

The Guild currently boasts over 900 artists within its 293 counties (from Maryland to Alabama) of the Southern Highlands. The membership application process, involving two rounds of jury, begins with image submissions, followed by presentation of objects.

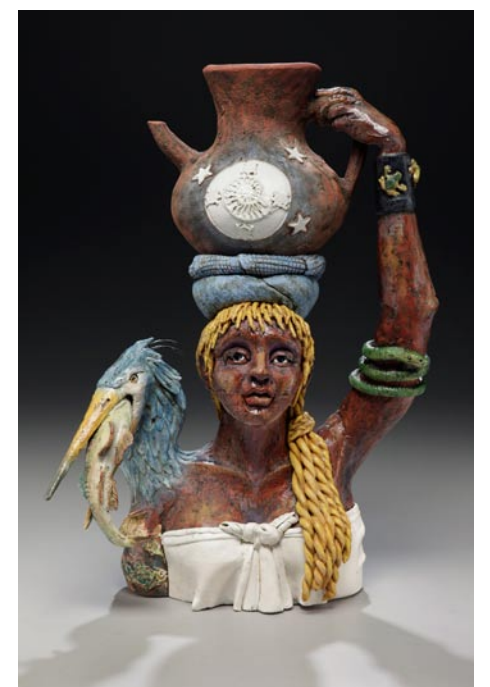


Work by Joni Davis

Jenny Mastin of Morganton, NC, was accepted in 2013 under the medium of Clay and is showing her piece *Water Maiden*.

“Clay anchors me to the earth, but sends me other places. It informs my sense of the world. It fires my imagination in a way no other material can,” Mastin says.

Along with work by new members, are pieces from the Guild's Permanent Collec-



Work by Jenny Mastin

tion, honoring each decade since its inception. Hand-thrown stoneware and contemporary figures are highlights that represent the strength of the clay community found throughout the Southern Highlands. Members such as Cynthia Bringle, Christopher Rummé, Herb Cohen and Ed Brinkman are a few of these iconic artists.

Communities of craftsmen and craftswomen are at the heart of what births such effervescent talent. *Solid Roots* is a testament to the bounty of creativity that continues to thrive in communities within and beyond Asheville.

The Folk Art Center is located at Mile-

continued on Page 32