

Carolina Creations in New Bern, NC

continued from Page 53

to sleep in and make afternoon appointments!)

CC: Where do you find your best ideas?

SS: I am inspired by many things in nature and the light, color, drama and emotion in a scene. When I have an emotional response to what I see then I try to impart that emotion to the viewer through my art. If I find that I am very passionate about a subject

then often I will do a series so I can develop it further. I think training your eye as an artist to "see" color and to be able to simplify subject matter helps to bring new ideas into view.

For further information check our NC Commercial Gallery listings, call the gallery at 252-633-4369 or visit (www.carolinacreations.com).

Fine Art at Baxters Gallery in New Bern, NC, Offers Works by Silvana Foti

Fine Art at Baxters Gallery in New Bern, NC, will present *Impressions*, featuring an exhibit of works by Master Printmaker Silvana Foti, on view from Oct. 9 through Nov. 30, 2015. A reception will be held on Oct. 9, from 5-8pm, during the downtown Art Walk.

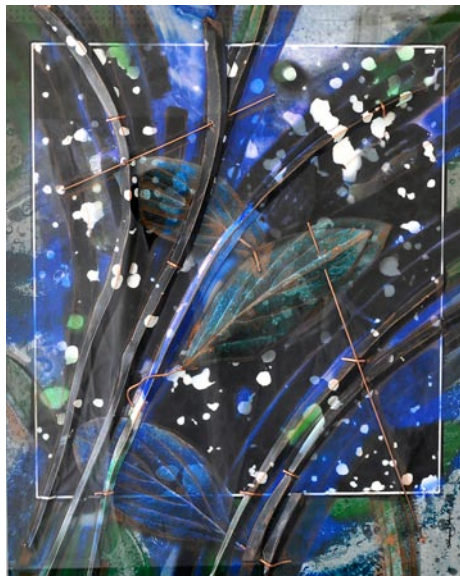
Like Mondrian, I want to express in my work "what every artist seeks to express: harmony through equivalence of relationships of lines, colours, and planes, but only in the clearest and strongest way."

Foti's images that emerge suggest her interpretation of a particular experience, emotion, or idea. Traditionally, her pieces are collaged prints, enhanced with metal and mixed media composition through the process of intaglio and relief with beginning experimentation in vitreography and encaustic.

The imagery involves her fascination with structure, surface textures, spatial relationships, pattern and atmosphere. Movement is created through strong diagonal, horizontal and vertical lines. Spatial depth and form occurs through careful placement of colors, values and textures. Some prints convey soft, fragile blending of colors, while others convey bold, more pronounced colors.

Foti's artistic goal—traditionally and in these 'new experimental' works—is to create balance and harmony through the use of basic design elements. Although the works tend to be simplified (abstracted) in nature, they have been transposed from concrete images.

Foti is an accomplished artist, experienced professor, and collaborative gallery director with over 30 years of experience in printmaking, teaching, educational leadership, curriculum review and design, instructional strategy, consulting, program coordination, fundraising, and art gallery management. Foti's diverse professional



Work by Silvana Foti

background includes 34 years teaching at the college level, 33 years serving as program coordinator for visual arts education, and 29 years serving as department chair for Methodist University's Department of Art, as well as extensive service in the area of arts education to state and national organizations.

Foti has a Master's Certification in Art Education from Meredith College, Raleigh, NC, Advanced Studies in Art Education at Youngstown State University, Youngstown, OH, MFA in printmaking and ceramic sculpture from The University of Notre Dame, Notre Dame, IN, Studies toward the MFA in printmaking at the School of the Art Institute of Chicago, Chicago, IL, and a BFA (Magna Cum Laude) from St. Mary's College, Notre Dame, IN.

For further information check our NC Commercial Gallery listings, call the gallery at 252/634-9002 or visit (www.fineartatbaxters.com).

Hillsborough Arts Council Offers Works by Sandy McBride, Tom Willis and Shannon Fitzgerald

The Hillsborough Arts Council in Hillsborough, NC, is presenting *Painting Spirit*, featuring the works of Sandy McBride, Tom Willis and Shannon Fitzgerald, on view through Oct. 24, 2015.

These three artists come from very different backgrounds and will each present their unique approach to abstract painting.

Sandy McBride, BFA Rhode Island School of Design and MFA Cornell University, believes that artwork should offer a challenge to the viewers' imagination. It should provide something enigmatic that keeps the person coming back; a connection between the viewer and the artist that reveals perceptions of what we believe our world to be.

Tom Willis has had a passion for art from an early age and considers himself to be self-taught. He has studied painting with notable painters at both ECU and UNCG. Mystery, energy, color, and emotional tension make up his personal contemporary vision.

Shannon Fitzgerald is an author, fine art-



Work by Shannon Fitzgerald

ist and quilter who is inspired by the natural world. Her paintings are highly vibrational and energetic. Her goal is to spread more light, love and laughter one painting at a time.

For further information check our NC Institutional Gallery listings, call the Council at 919-643-2500 or visit (www.HillsboroughArtsCouncil.org).

New Hanover County Arboretum in Wilmington, NC, Offers 20th Juried Art Exhibition - Oct. 2 - 4, 2015

The New Hanover County Arboretum in Wilmington, NC, will present its 20th Anniversary, *Art in the Arboretum Exhibit*, on view from Oct. 2 - 4, 2015.

The exhibition is one of the area's premier outdoor cultural events. This juried art exhibit and sale features not only beautiful art, but also, music, children activities and much more.

Tickets are \$5, but free for Friends of the Arboretum Members.

It is The Arboretum's most important fundraiser event and one that attracts thousands of visitors to its gardens. What better way to enjoy looking at artworks created by 2D and 3D artists from Wilmington and surrounding areas, then amongst such

an attractive and appealing setting. This background takes the viewers on a visual and maybe emotional venture.

This is the season when the Arboretum's gardens are most attractive, with all the beautiful fall colors.

If you have not experienced this fabulous display of gardens and art in the past years, don't miss it this year, come and celebrate with us, and be delighted with this beautiful show.

The Arboretum is located at 6206 Oleander Drive in Wilmington. The hours of the exhibition are 10am-4pm each day.

For further information check our NC Institutional Gallery listings or call 910/798-7660.

Carolina Arts is now on Twitter!

Sign up to follow Tom's Tweets, click below!



twitter.com/carolinaarts

Hillsborough Gallery of Arts in Hillsborough, NC, Host Preview Show for Orange County Open Studio Tour

The Hillsborough Gallery of Arts in Hillsborough, NC, will present the *Orange County Artists Guild Open Studio Tour Preview Show*, featuring works by artists participating in the 2015 Orange County Artists Guild open studio tour, on view from Oct. 26 through Nov. 15, 2015. A reception will be held on Oct. 30, from 6-9pm.

Hillsborough Gallery of Arts members Linda Carmel, Chris Graebner, Lolette Guthrie, Marcy Lansman, Eduardo Lapetina, Ellie Reinhold, and Pringle Teetor will be included in a preview show for the upcoming Orange County Artists Guild Open Studio Tour.

This marks the 21st year that the Orange County Artists Guild will host its Annual Open Studio Tour. During the first two weekends in November, eighty-six artists located throughout Orange County, including Chapel Hill, Carrboro, Hillsborough, and surrounding areas will be participating in this juried event and opening their studios to visitors who will discover where the creative magic happens!

Linda Carmel and Pringle Teetor will show together at Carmel's home studio, 101 Huntington Drive, Chapel Hill, #41 on the tour. Carmel will show her acrylic paintings and will be giving demonstrations of her unique painting technique that uses acrylic modeling paste. Teetor, a full time glass blower, has her studio in Creedmoor but will show a video demonstration of her glass blowing. She will exhibit a variety of pieces - both indoor and outdoor: vases, bowls, drinking glasses, decanters, garden sculpture, pumpkins, solar garden lights, and jewelry.

This is Chris Graebner's fifth year on the tour. As a painter she most often paints landscapes in oils, but her background includes botanical art with watercolor and ink. Graebner enjoys mixing media to see



Work by Chris Graebner

what each brings to the other. Some of her recent work is a return to botanical silver-point drawings which she colored with layers of highly diluted acrylics instead of more traditional watercolors. In addition to her landscape painting, this summer she has been exploring botanical subjects using scratchboard and colored inks.

Graebner invites you to visit her in her studio, #6 on the Tour map, just a couple of blocks from the Hillsborough Gallery of Arts in downtown Hillsborough.

Lolette Guthrie's studio, #62 on the tour map, is located in her home at 113 Rhododendron Drive, Chapel Hill. This will be her seventh year on the tour. Painting largely from memory and painting both in oil and in pastel, Guthrie derives most of her inspiration from time spent on North Carolina's Outer Banks. She will be showing both oil and pastel landscapes and abstracted landscapes that explore what it feels like to be at a particular place at a particular time.

Marcy Lansman is welcoming visitors to her home studio, #39 on the tour map, on Mt. Bolus Road close to the center of Chapel Hill. This is Lansman's eleventh year on the Studio Tour. Many neighbors drop by as well as repeat customers from previous years. It is a great time to reconnect with old

continued on Page 55

The deadline each month to submit articles, photos and ads is the 24th of the month prior to the next issue. This will be Oct. 24th for the November 2015 issue and Nov. 24 for the December 2015 issue. After that, it's too late unless your exhibit runs into the next month. But don't wait for the last minute - send your info now.

And where do you send that info?
E-mail to (info@carolinaarts.com).