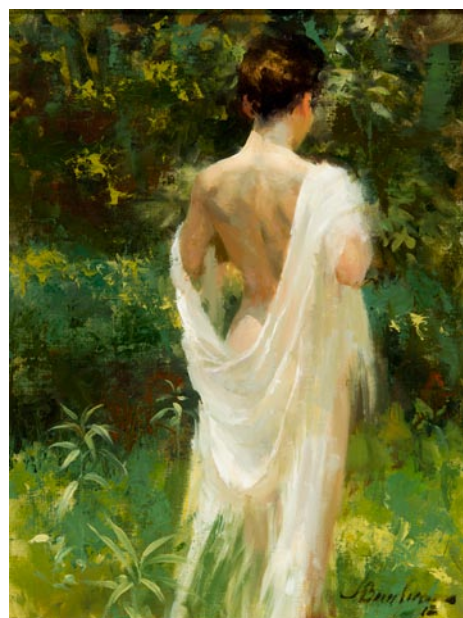


# SC Commercial Galleries

continued from Page 66



Work by Joe Bowler

**The Red Piano Art Gallery**, 220 Cordillo Parkway, Hilton Head Is. **Ongoing** - Presenting a broad collection of 19th and 20th century representational American paintings and sculpture. Landscapes, still lifes, genre scenes, figures and historical subjects by many of America's leading representational artists, impressionists and expressionists are available for discriminating private, corporate and institutional collectors. Hours: M-F, 9am-5pm; Sat., 10am-3pm or by appt. Contact: 843/785-2318 or at (<http://redpianoartgallery.com/>).

## Lake City

**Olio Studio**, 104 West Main Street, Lake City. **Ongoing** - Olio Studio is an art studio that offers classes, workshops, arty parties, paint your own pottery, local art and other art events & activities. Hours: Mon., 1-6pm; Tue.-Fri., 10am-6pm; and Sat., 10am-5pm. Contact: 843/374-6546 or at ([www.olio-studio.com](http://www.olio-studio.com)).

## Lancaster

**Bob Doster's Backstreet Studio, Gallery, & Garden**, 217 E. Gay St., at the intersection of White St. & Gay St., one and one half blocks east of Main St., Lancaster. **Oct. 30, 5-8pm** - "Lancaster County Council of the Arts Annual Fundraiser: Night of the Living Arts. Visitors will enjoy live music with Whiskey All-Star Grass, refreshments, and exhibits comprised of works of art from local to internationally-known artists. Backstreet's unique "Bohemian-Style" garden features sculpture, fish pond, serpentine mosaic walls, and lushly-overgrown plantings. Coupled with the eclectic galleries, it offers the perfect atmosphere for a night of "haunting" fun for the arts. Whiskey All-Star Grass has a large regional following and the trio includes talented musicians Mike Faulkenberry, Cary Walter, and Chase Killough. Night of the Living Arts (N.O.L.A.) is coordinated by the LCCA and includes galleries and businesses in the Cultural Arts District of Lancaster, SC, who keep their doors open late in support of the programs of the non-profit agency. **Ongoing** - Featuring works by award winning sculptor Bob Doster, along with changing exhibits of local, regional, and national artists working in all mediums. Hours: by appt only. Contact: 803/285-9190 or at ([www.bobdoster.com](http://www.bobdoster.com)).

**Chastain's Studio Lofts**, 107 South Main Street, Lancaster. **Ongoing** - Chastain's Studio Lofts is a place for artists, wanna-be artists and those who appreciate visual arts or want to learn more about it. It's a place of color and shapes, of imagination and beauty, of heart and soul. Most of the pieces were done by artists from Lancaster County and the surrounding communities, and most pieces are for sale at reasonable prices. Classes are also offered at the gallery. Hours: Tue. and Thur., 1-5pm and by appt. Contact: 803/804-3659 or at ([www.chastainsstudiolofts.com](http://www.chastainsstudiolofts.com)).

## Latta

**RJK Frames and Things**, 112 E. Main Street, Latta. **Ongoing** - Featuring Imperial Russian bone china, exceptional gold trimmed lacquer boxes, Soviet propaganda posters, rare Russian Orthodox Icons and Avant Garde drawings. Hours: Tue.-Sat., 8am-6pm. Contact: 843/752-9319 or (<http://www.rjkframesandthings.com/>).

## Lexington

**Mary Elliott Williams' Studio**, 1044 Hope Ferry Rd., Lexington. **Ongoing** - Precious Faces, artworks mainly in pastel and oil, commissions

accepted. Hours: by appt. Contact: 803/356-0381 or at ([www.artistsofthesouth.com](http://www.artistsofthesouth.com)).

**Sandlapper Art & Frame**, 711 E. Main St., Suite M, downstairs in Lexington's Historic Old Mill, Lexington. **Ongoing** - Offering custom picture framing and fine art sales. Also handmade gifts such as pottery, jewelry, metal art, etc. The store has a very "coastal" flair but all mediums and subjects are exhibited. Hours: Tue.-Fri., 10am-6pm; Sat., 10am-3pm; & by appt. Contact: 803/785-4278 or at ([www.sandlapperart.com](http://www.sandlapperart.com)).

## Mt. Pleasant - Isle of Palms - Sullivan's Is.

**Accent Framing & Gallery**, 1303 Ben Sawyer Blvd., Mt. Pleasant. **Ongoing** - Original art by many of the Lowcountry's best artists featuring Martin Ahrens, Fletcher Crossman, Lynn Salkeld, Charles Parnell and Shea Fowler. Hundreds of prints and photographs in stock. We also offer painting lessons by master artists. Hours: M.-F., 10am-6pm & Sat., 10am-4pm. Contact: 843/884-5828.

**Adele's Pottery Studio & Gallery**, 1659 Middle St., Sullivan's Island. **Ongoing** - Featuring wheel thrown & hand-built clay works by Adele Deas Tobin. Also offering classes for children and teens. Pottery on the wheel Sept.-May. Hours: daily, 11am-5pm & by appt. Contact: 843/883-9545.

**Artwerx Framing & Galleria**, The Plaza @ Park West, Mt. Pleasant. **Ongoing** - Featuring a unique, one-of-a-kind collection of original artwork, prints, giclees, hand painted gifts, custom mirrors, hand blown glass lamps, and hand made jewelry by local artists such as Greg Drexler, Susan Hauser, Will Helger, Steve Neff, Richard Rose, Michael Story, and photographer Lea Dales. Also - Professional, on-site custom framing, as well as a space for gifts. Hours: Mon.-Fri., 9am-6pm & Sat., 10am-4pm. Contact: 843/971-4643.

**Complements Gallery**, 630 Johnny Dodds Road, Mt. Pleasant. **Ongoing** - Featuring pottery by Mary Jeffries. Hours: Mon.-Sat., 10am-5pm. Contact: 843/881-4035.

**Karen's Korner**, Gateway to the Beach center, 1405 Ben Sawyer Blvd., near CVS, Mt. Pleasant. **Ongoing** - Offering high quality custom framing, originals and prints by Charlynn Knight, Carol McGill, Sabine Avacalade, Kevin Curran, and Carol Ann Curran. Photography by Scott Henderson, Marc Epstein, as well as pottery, stained glass and other fine art objects. Hours: Mon.-Fri., 10am-6pm & Sat., 10am-4pm. Contact: 843/971-4110 or at ([www.karenskorner-frameandart.com](http://www.karenskorner-frameandart.com)).

**Sandpiper Gallery**, 2201 Middle Street, across the street from Poe's Restaurant and beside Station 22 Restaurant, Sullivan's Island. **Ongoing** - Minutes from Charleston on charming Sullivan's Island, the gallery features a fresh mix of breath-taking paintings, pottery, exquisite jewelry and unique works in wood, glass and metal. The eclectic collection of works in this gallery is sure to bring a smile and will interest both the seasoned fine art collector as well as the fine craft enthusiast; from stunning paintings to special gifts from the lowcountry. Hours: Mon.-Sat., 11am-6pm. Contact: 843/883-0200 or at ([www.sandpipergallery.net](http://www.sandpipergallery.net)).

**The Treasure Nest Art Gallery**, 1055 Johnnie Dodds Blvd., Hwy. 17 frontage road., Crickentree Village, Mt. Pleasant. **Ongoing** - Featuring over 700 hand-painted oils and 1,000 frames at wonderful quality and truly superb value. Works by highly accomplished artists from the Southeast, US National, and International locales. Offering a great variety of subjects including: Lowcountry marschscapes, beachscapes, wildlife, boats, bridges and architecture; other US and European landscapes, cityscapes, and harbors; as well as still lifes, abstracts and much more. Hours: Mon.-Sat., 10am-6pm & Sun., 1-5pm. Contact: 843/216-1235 or at ([www.treasurenestartgallery.com](http://www.treasurenestartgallery.com)).

## Myrtle Beach / Grand Strand

**Chapin Park**, 1400 Kings Hwy and 16th Ave. N., Myrtle Beach. **Oct. 10 & 11; and Nov. 7 & 8, 2015** - "43rd Annual Art in the Park - Show & Sale," sponsored by Waccamaw Arts and Crafts Guild. We will have over 60 artists from the East Coast, as far away as TN, with about 20 of those artists from our local area. Typical art will include paintings, woodworking, photography, jewelry, fabric, glass, metal, pottery, leather and stone. Free admission and Kid friendly. For info call JoAnne Utterback, 843/446-3830 or at ([www.artsyparksy.com](http://www.artsyparksy.com)).

**Valor Park**, 1120 Farrow Parkway, The Market Common, Myrtle Beach. Valor Park, at The Market Common, in Myrtle Beach. **Nov. 14 & 15, 2015** - "Waccamaw Arts and Crafts Guild's 43rd Annual Art in the Park". We will have over 60 artists from the East Coast and as far away as Tennessee with about 20 of those artists from our local area. Typical art will include paintings, woodworking, photography, jewelry, fabric, glass, metal, pottery and stone. No admission charge. Child and Pet Friendly! Contact: JoAnne Utterback at 843/446-3830 or ([www.artsyparksy.com](http://www.artsyparksy.com)).



Work by Elizabeth Keller

**ARTSPACE 506**, 506 37th Ave. South, North Myrtle Beach. **Through Nov. 14** - "Contemporary Ceramic Sculpture by Elizabeth Keller". Keller is an extraordinary ceramic artist who continually pushes the boundaries of her craft. With decades of experience in the ceramic studio she has developed precise and unique working methods producing vessels and sculptures that amaze and inspire. **Ongoing** - An alternative art gallery in North Myrtle Beach, South Carolina that provides exhibition opportunities for established and emerging artists. Hours: Wed.-Sat., 11am-6pm. Contact: 843/273-030399 or at ([www.artspace506.com](http://www.artspace506.com)).

**Art & Soul, an Artisan Gallery**, 5001 North Kings Highway, in the Rainbow Harbor plaza, Myrtle Beach. **Ongoing** - Featuring works by such local artists as Giuseppe Chillico, Kim Clayton, Dina Hall, Carl Kerridge, Alex Powers, Robert Sadlemire and Ed Streeter. Hours: Mon.-Fri., 10am-5pm & Sat., 10am-4pm. Contact: 843/839-2727 or at ([www.artandsoulmb.com](http://www.artandsoulmb.com)).

**Collectors Cafe & Gallery**, 7726 North Kings Highway, Hwy. 17 and 78th Avenue, Myrtle Beach. **Ongoing** - 5,000 square foot gallery featuring local and regional artists. Hours: Regular cafe hours. Contact: 843/449-9370.

**Southern Portrait and Accents**, Village Square Shopping Center, Hwy. 17 & 40th Ave., 3901 N. Kings Hwy., Myrtle Beach. **Ongoing** - Featuring works by local artists including: Ruth Cox, Bill Strydesky, Susan Duke, Vittorio Santini, Giovanna Picasso, Sarain Gomez, Cheryl Reynolds-Castle, Damien Castle, Tadd Rubin, Marcie Macie-Hill, Claudio Olevido, Frank Ceruzzi, nostalgic photographer, Carlo Artga sculpture. Hours: Mon.-Fri., 10am-7pm; Sat. noon-4pm & by appt. Contact: 843-448-3303 or at ([www.southernportraitsandaccents.com](http://www.southernportraitsandaccents.com)).

**The Howard Gallery**, 532 West Broadway St., Myrtle Beach. **Ongoing** - Featuring a frame Shop and gallery of local award winning artists with cards and small gifts as well. Hours: Mon.-Fri., 9:30am-5:30pm & 3rd Thur. of the month from 5-7:30pm. Contact: 843/626-3118.

**The Loft at The Howard Gallery**, 532 West Broadway St., Myrtle Beach. **Ongoing** - Featuring a gallery of award winning artists, featuring paintings by Carol Belcher, Elaine Bigelow, Sue Coley, Judy O'Brien and Jan Wurst, with collage, origami and ceramics by Millie Doud, ceramics by John Bolicki, photos by Suzanne Gaff, and photos and jewelry by Kelly Mezapelle. Also a fine selection of framing by The Howard Gallery. Hours: Mon.-Fri., 9:30am-5:30pm & 3rd Thur. of the month from 5-7:30pm. Contact: 843/626-3118.

## North Charleston

**Artistic Spirit Gallery**, 10 Storehouse Row, The Navy Yard at Noisette, North Charleston. **Ongoing** - Featuring original visionary artwork by people who are driven to produce as a form of self-expression or release. In addition to pieces by long departed anonymous artisans, work by Southern folk artists and contemporary visionaries such as William LaMirande, Casey McGlynn, Davy Marshall, Ed Larson, Alfred

Eaker and Jerome Neal are featured. Hours: by appt. only. Contact: 843/579-0149 or at ([www.artisticspiritgallery.com](http://www.artisticspiritgallery.com)).

**Steve Hazard Studio & Art Gallery**, 4790 Trade Street, located in the business park across from the Festival Center, off Patriot Blvd. between Dorchester Road & Ashley Phosphate Road, Suite H, North Charleston. **Ongoing** - A new venue for on-going art shows of Contemporary Fine Craft and Fine Art available for purchase. A gallery and working studio featuring works by Steve Hazard including 2-D & 3-D wall art, welded metal furniture, sculpture, functional objects, and jewelry in fused glass and etched clear glass. Art commissions & unique design projects accepted. Find art beyond the ordinary, off the beaten path. Contemporary abstracts, nonrepresentational & figurative works created by local, national & international artists including sculpture, objects, original paintings & reproductions. Free admission and free parking. Hours: by appt only. Contact: 843/864 4638 or e-mail to ([afgraffiti@aol.com](mailto:afgraffiti@aol.com)).

## Pawleys Island, Litchfield & Murrells Inlet

**Art Works**, Litchfield Exchange, 2 miles south of Brookgreen Gardens, behind Applewood's House of Pancakes, Pawleys Island. **Ongoing** - Featuring original work by a dozen local artists in regularly changing displays. Paintings by Nancy Bracken, Danny McLaughlin, Barnie Slice and Jane Woodward, as well as works in mixed media by Kathi Bixler, Gwen Coley, Millie Doud, Barbara Linderman, Mary Helen Lowrimore, Suz Mole and Sue Schirtzinger, and stained glass by Sharon Knost and Kathy Welde, painted glassware by Nancy Grumman. Hours: Mon.-Sat., 10am to 2pm. Contact: 843/235-9600 or at ([classatpawleys.com](http://classatpawleys.com)).

**Ebb & Flow Art Co-op**, 4763 Hwy. 17, across from Thomas Supply, right before the Wachesaw Rd. intersection, Murrells Inlet. **Ongoing** - a new art gallery in Murrells Inlet that boasts a hefty array of local talent. The gallery features many different mediums from established artisans who have been working in the area for years as well as fresh new talent, including works by: Lee Arthur, Adrian Dorman, Gaston Locklear, Chuck May, Keels Culberson Swinnie, Ted Watts, Sara McLean, Larry Bell, Jason Moore, Amy Cox, Amy Locklear, Graham Lawing, Glen Grant, Susan Williams, Wes Gordon, Mary Manz, Allison Creagh, Kristen Montsinger, Bobbie Holt, Rich Kuhn, Jolyn Kuhn, Danny Foley, Dot Hannah, Tom Hora and many more! Hours: Tue.-Sat., 10am-5pm. Contact: 843/446-7076 or at (<http://www.keelsart.com>).

**Island Art Gallery**, a Fine Art Gallery, Villages Shops, 10744m Ocean Highway, Pawleys Island. **Ongoing** - Island Art Gallery is an artist-owned gallery with eight owner artists and twenty-seven exhibiting artists. We represent artists from North and South Carolina in a variety of mediums including oil, pastel, acrylic and watercolor. We offer ongoing studio art classes and workshops from established local and visiting artists. Hours: Mon.-Sat., 10am-5:30pm. Contact: call 843-314-0298 or at ([www.pawleysislandart.com](http://www.pawleysislandart.com)).

**The Cheryl Newby Gallery**, 11096 Ocean Hwy 17., in The Shops at Oak Lea, Pawleys Island. **Ongoing** - Representing Sigmund Abeles, Ellen Buselli, Ray Ellis, Joseph Cave, Laura Edwards, Claire K. Farrell, Kathy Metts, Mike Williams, and Charles Williams; also sculptors Gwen Marcus and Catherine Ferrell. A large inventory of original antique natural history prints and engravings by Mark Catesby, John J. Audubon, John Gould, and others. Also original antique maps and charts from the 16th through the 19th centuries. Hours: Tue-Sat., 10am-5:30pm. Contact: 843/979-0149 or ([www.cherylnewbygallery.com](http://www.cherylnewbygallery.com)).

## Pendleton

**Art Gallery on Pendleton Square**, 102-A E. Main Street, Pendleton. **Ongoing** - The gallery is operated by the Gallery of the Pendleton Square Artist Coop. Media include: paint in oils, acrylics and watercolor; mixed media; jewelry; pottery and ceramics; sculpture in modern materials; fabric art; photography. Second Friday receptions (6-8pm) present works of a featured (non-member) artist or selected (member) artist, with refreshments. Hours: Tue.-Sat., 10am-5:30pm & Sun., 10am-2pm. Contact: 864/221-0129 or at (<http://www.artgalleryps.org>).

## Pickens

**Court Street Gallery**, 107 Court Street, Pickens. **Ongoing** - Featuring works by Donald Collins (painting); Kevin Collins (photography); Jamie Davis (ceramics); Joy Spirit Hawk Evans (jewelry); Robin Giddings (painting); Griz Hockwalt (blacksmith); Renee Mendola (jewelry); and Joel Wilkinson (painting). Hours: Tue.-Sat., 10am-6pm & open until 9pm on the 3rd Fri. of each

continued on Page 68