

ART Works Brevard NC

continued from Page 25

for-profit work, and raised a son who is a former Peace Corps volunteer and current medical school student.

In "Act III", Keenan returned to the South after 32 winters in Rochester NY, making Brevard her home. She now describes herself as, "first and foremost, a collage artist in a passionate love affair

with handmade papers from around the world." Her compositions capture the strength and nuances of color and texture in balance, rhythm and flow.

For further information check our NC Commercial Gallery listings, call the gallery at 828/553-1063 or e-mail to (art-worksbrevardnc@gmail.com).

Center for Craft, Creativity & Design in Asheville, NC, Offers Exhibit Focused on Mending and Repair

The Center for Craft, Creativity & Design in Asheville, NC, is presenting *The Future of Fixing*, featuring 16 internationally based design studios and artists whose work addresses the concept of repair, on view in the Benchspace Gallery & Workshop, through Jan. 7, 2017.

We live in an age when many products are designed to be thrown away. With social and environmental concerns rising, fixing offers a craft-centered response to our increasingly disposable commodity culture. The works on view in *The Future of Fixing* offer a range of propositions for improving the future through repair - from fixing an object, like Humade's New Kintsugi kit, to fixing the entire design system, like the Royal Society of Art's The Great Recovery project, which offers a re-designed production process to minimize waste.

"Asheville shares many of the values put forward in this exhibition - from recycling and up-cycling to restoration, mending, and personalization. I'm especially excited about the programmatic opportunities and collaborations this exhibition has made possible," says CCCD Assistant Director and Curator Marilyn Zapf. Program partners will include Asheville on Bikes, Asheville Makers, Silver River Center for Chair Caning, and more.

Originally curated for Poland's Łódź Design Festival under the title Brave Fixed World, *The Future of Fixing* is an open-source exhibition, made available to be adapted and re-imagined. It is a call for fixing in our daily lives.

The exhibition will be arranged by 5 themes of fixing: things, materials, process, systems, and attitudes. In addition to designed objects, prototypes, repair kits, installations, and video, the exhibition will feature two interactive components, including a Maker Library and a Fixshop. In the Maker Library, visitors can browse a selection of fixing-related books curated by a rotating cohort of Featured Librarians from around the world. The Fixshop will host a series of rotating workshops and hands-on activities on a daily basis.

Selected works are from: A Parede (Berlin, Germany), Amy Twigger Holroyd (Leeds, UK), Fixperts (London, UK), Hans Stofer (London, UK), Humade (Amsterdam, Netherlands), Micaella Pedros (London, UK), Michael Swaine (Seattle, Washington, USA), Nathan Lynch (San Francisco, California, USA), Re-do Studio (Paris, France), ReKindle (Christchurch, New Zealand), Studio Swine (London, UK), Sugru (London, UK), The Great

Humade, "New Kintsugi", 2012. Photo: courtesy of Humade.

Recovery, Royal Society of Arts (London, UK), The Polyfloss Factory (London, UK), Unfold (Antwerp, Belgium), and Woolfiller (Amsterdam, Netherlands)

Related programs to be held on conjunction with the exhibit include: On Oct. 22, from 1-3pm - Bike Repair Event with Asheville on Bikes. On Nov. 5, from 19am-4pm - Shaker Tape Chair Repair Workshop with Silver River Center for Chair Caning. Additional details and programming to be announced.

The Future of Fixing was originally created by From-Now-On and adapted and curated by Marilyn Zapf of The Center for Craft, Creativity & Design under a Creative Commons license CC BY-NC-SA 4.0. This project was supported by the N.C. Arts Council, a division of the Department of Natural and Cultural Resources.

Founded in 1996, The Center for Craft, Creativity & Design (CCCD) is a national 501c3 nonprofit organization dedicated to advancing the field of craft through fostering new ideas, funding craft scholarship, and backing the next generation of makers, curators and critics. CCCD has developed a strong national reputation as a significant resource for artists, museums, academic researchers, university students and arts organizations. Each year, CCCD administers over a quarter million dollars in grants to those working in the craft field.

For further information check our NC Institutional Gallery listings or visit (www.craftcreativitydesign.org/the-future-of-fixing).

Groewood Gallery in Asheville, NC, Features Works by Josh Cote'

Groewood Gallery in Asheville, NC, will present *Wild Hares and Other Phantasmagoria*, featuring works from sculptor Josh Cote', on view from Oct. 1 - 31, 2016. A reception will be held on Oct. 1, from 3-6pm.

During this solo exhibition, Groewood Gallery is offering a window into the creative world of Baskerville, NC, artist Josh Cote', known for his intricately woven wire sculptures. *Wild Hares and Other Phantasmagoria* will showcase a fantastical collection of Cote's anthropomorphic animals (predominantly wild hares) as well as shapeshifters, spirits, and antique time machines. Each sculpture

is unique and painstakingly handcrafted from recycled wire, epoxy clay, found objects, and welded steel.

Cote' has exhibited his work at the New Orleans Jazz & Heritage Festival for the past few years and is also represented by the American Folk Art Museum in New York City. His work can be found in notable public and private collections, including Richard Branson's of Virgin Records.

Groewood Gallery, which will mark its 25th anniversary in 2017, is a nationally recognized gallery that showcases fine American art and craft. The gallery is

continued above on next column to the right

continued above on next column to the right

Turtle Island Pottery

Handmade pottery by Maggie & Freeman Jones



Old Fort Showroom Open Most Saturdays

Please call 828-337-0992 for an appointment any other day.
2782 Bat Cave Road • Old Fort, NC 28762
www.turtleislandpottery.com

housed in the historic weaving and wood-working complex of Biltmore Industries, located adjacent to The Omni Grove Park Inn in north Asheville. Free parking is available on-site.

Groewood is also home to Asheville's only Antique Car Museum, the North Carolina Homespun Museum, Golden Fleece Restaurant, 9 working artist studios, and an outdoor sculpture garden. The property, with its six cottages built from 1917 - 1924, is listed on the National Register of Historic Places.

For further information check our NC Commercial Gallery listings, call the gallery at 828/253-7651 or visit (www.groewood.com).

Asheville Gallery of Art in Asheville, NC, Features Works by Ruth Ilg

Asheville Gallery of Art in Asheville, NC, will present *Meditazioni*, featuring works by Ruth Ilg, on view from Oct. 1 - 31, 2016. A reception will be held on Oct. 7, from 5-8pm.

Ruth Ilg is known for her vibrant acrylic abstract paintings, delicate watercolor botanicals, miniature oil landscapes, and for her innovative encaustic work.

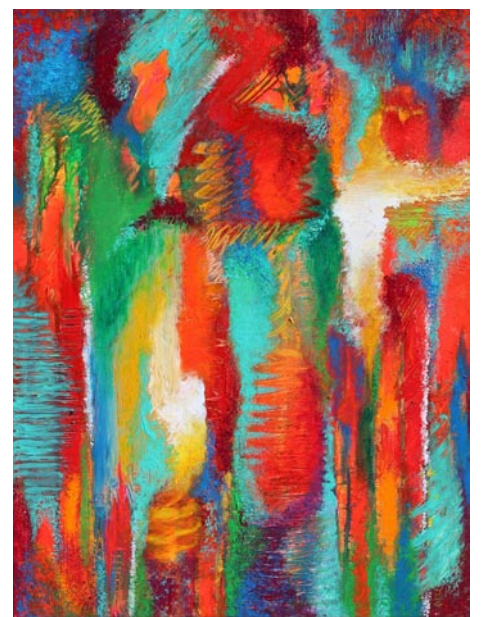
Ilg states, "On this meditative journey of color, form, and texture, I experimented with transforming elusive moments into visual expressions. I encourage viewers to regard my personal meditations as an invitation to give a voice to their own momenti elusivi."

A native of Germany, Ilg is an award-winning artist, photographer, and trilingual poet. She has studied with renowned artists in Europe and in the US, resulting in a continuing strong desire to work within a wide spectrum of techniques, styles, media, and themes.

Ilg has won numerous awards for her creative work, which can be found in private and corporate collections around the world. The artist resides and works at Biltmore Lake, NC, and at Lake Constance, Germany. Regionally, she shows her work at the Asheville Gallery of Art and at the



Work by Josh Cote'



Work by Ruth Ilg

Miya Gallery in Weaverville, NC.

Ilg's work and that of the other 30 gallery members will be on display and for sale through the month during regular hours. The gallery is located on Patton Avenue in Asheville, across from Pritchard Park.

continued on Page 27