

# NC Commercial Galleries

continued from Page 53

5:30-8:30pm, where you can meet the artists and enjoy some refreshments. Contact: Betsy Browne at 336/465-2387 or at (<http://www.colorshowgallery.com>).

**Little River Art Works**, 6417 Abner Rd., Asheville. **Ongoing** - Featuring stoneware luminaries and hand carved folk art scenes on our pottery by Nora & Barry Walbourn. Hours: by appt. only. Contact: 336/381-4708 or e-mail at ([littleriver@rtmc.net](mailto:littleriver@rtmc.net)).

**Susan Harrell Studio Gallery**, 375 S. Fayetteville Street, Asheville. **Ongoing** - Featuring a fine art gallery showcasing the work of contemporary photorealism painter Susan Harrell and other select artists. Hours: Tue.-Sat., 10am-5pm. Contact: 336/267-8286 or at ([www.susanharrell.com](http://www.susanharrell.com)).

## Asheville

**Downtown Asheville, Oct. 5, 5-8pm** - "Downtown Art Walks," presented by the 25 members of the Asheville Downtown Gallery Association. Pick up a Downtown Gallery Guide with a map to help you along the way at any downtown gallery, the Chamber of Commerce, or Pack Place. Contact: 828/258-0710, ext. 108 or at ([www.ashevilledowntowngalleries.org](http://www.ashevilledowntowngalleries.org)).

**River Arts District, Asheville. Second Saturdays through the end of 2018** - "Second Saturdays in the River Arts District". The River Arts District will be holding gallery walks with live demonstrations, live music, wine tastings / spreads of food, and more! Meander the mile-long district while the artists keep their doors open late. There are more than 200 artists in the 23 buildings throughout the district. Most of them will be on hand to describe or show you their techniques as well as share with you what inspires them. Free trolley circling through River Arts District from 10am to 6pm. Including: Tracksides Studios, Studio A - Pink Dog Creative, Odyssey Co-Op Gallery for Ceramic Arts, Mark Bettis Studio & Gallery, Riverview Station/Studio 256/Bluebird Designs & Nora Julia Jewelry, Jonas Gerard Fine Art, and Wedge Studios. For more info contact: Andrea Kulish by e-mail at ([radartistmarketing@gmail.com](mailto:radartistmarketing@gmail.com)) or call 828/423-6459.

**River Arts District, Asheville, Nov. 10 & 11, from 10am-5pm** - "Asheville River Arts District Fall Studio Stroll". The Artists of Asheville's River Arts District open their doors for a full weekend at the Fall Studio Stroll, welcoming the public to experience and collect amazing art in the studios and galleries. The Fall Stroll will once again feature a Food Drive in support of MANNA FoodBank by collecting non-perishable food items for our area's needy families. Donations and information on the event will be located at the City of Asheville's newly renovated building at 14 Riverside Drive. Attendees will enjoy free parking, restrooms and shuttle pick up at the location right on the French Broad River. For more information visit ([www.riverartsdistrict.com](http://www.riverartsdistrict.com)).

**Aesthetic Gallery**, 6 College St., across from Pritchard Park, Asheville. **Ongoing** - Offering a variety of international works, including terracotta ceramics from Viet Nam and stone sculpture from Zimbabwe. In addition, there is an assortment of intricately detailed hand-crafted pictorial textiles from Australia and Lesotho, many of which depict local Asheville scenes. Also available are Australian Aboriginal oil paintings, Bruni Sablan oil paintings from the "Jazz Masters Series," and ceramic tiles from the Southwest (US). Hours: Tue-Sat, noon-6pm. Contact: 828/301-0391 or at ([www.aestheticgallery.com](http://www.aestheticgallery.com)).



Work by Kim Ellington

**American Folk Art & Antiques**, 64 Biltmore Ave., Asheville. **Oct. 5 - 24** - "Bowls, Bowls, Bowls," featuring works by Rosa & Winton Eugene, Caroline Cercone, Kim Ellington & Naomi Dalglish and Michael Hunt. A reception will be held on Oct. 5, from 5-8pm. From the humblest bowl that fits perfectly in your hand, to one that you proudly use every Thanksgiving, our

bowls don't just hold food, they hold memories. American Folk Art will be presenting a plethora of functional pottery bowls by 5 of our distinguished regional potters, all presenting their own very personal design aesthetics. **Ongoing** - Featuring antique folk art, functional and contemporary folk pottery, furniture and paintings. Hours: Mon.-Sat., 10am-6pm & Sun., noon-5pm. Contact: 828/281-2134 or at ([www.amerfolk.com](http://www.amerfolk.com)).

**Appalachian Craft Center**, 10 North Spruce St., Asheville. **Ongoing** - Folk pottery, face jugs, traditional crafts, and other collectables. Hours: Mon.-Sat., 10am-5pm. Contact: 828/253-8499 or at ([www.appalachiancraftcenter.com](http://www.appalachiancraftcenter.com)).

**ArtEtude Gallery**, 89 Patton Avenue, Asheville. **Ongoing** - Featuring compelling contemporary art, by talented artists, for discerning collectors. Hours: Mon.-Thur., 10am-6pm; Fri.-Sat., 10am-7pm; & Sun. noon-5pm. Contact: 828/252-1466 or at (<http://artetudegallery.sqsp.com/>).

**Ariel Gallery**, 19 Biltmore Ave., Asheville. **Ongoing** - Presenting the best in clay, fiber, paper, books, jewelry, metal, sculpture, furniture and glass by members of the Ariel Contemporary Craft Cooperative. A gallery owned and operated by artists. Hours: Tue.-Thur., 10am-6pm; Fri. & Sat., 10am-7pm and Sun., 1-5pm. Contact: 828/236-2660 or at ([www.arielcraftgallery.com](http://www.arielcraftgallery.com)).

**Bellagio**, 5 Biltmore Plaza, Historic Biltmore Village, Asheville. **Ongoing** - Featuring exquisitely handcrafted jewelry and clothing. Hours: Mon.-Sat., 10am-6pm. Contact: 828/277-8100 or at ([www.bellagioarttowear.com](http://www.bellagioarttowear.com)).

**Bella Vista Art Gallery**, 14 Lodge St., Historic Biltmore Village, Asheville. **Ongoing** - Featuring works by regional and national artists in a variety of mediums. Offering contemporary oil paintings, blown glass, pottery, black & white photography, stoneware sculptures, and jewelry. Hours: Mon.-Sat., 10am-6pm & Sun., 10am-4pm. Contact: 828/768-0246 or at ([www.BellaVistaArt.com](http://www.BellaVistaArt.com)).

## New Location

**Bender Gallery**, 29 Biltmore Avenue., Asheville. **Through Oct. 20** - "Linear Angularity," a one person exhibition of highly polished refractive optical glass assemblages by long time gallery artist, Toland Sand. Sand has created six new sculptures for the show including a new collaborative body of work with San Francisco based glass artist, David Patchen. This event runs concurrent with Asheville's "Summer of Glass" which is being held in conjunction with Chihuly at Biltmore Estate. **Oct. 5 - 31** - "Cameras: Interpreters of Reality," featuring a solo exhibition of glass cameras by Joshua Hershman. Hershman is a mixed media artist who primarily works with kiln cast glass and photography. The cameras are life sized and are created by making a mold from antique or broken cameras, which destroys the original camera in the process. The cameras are then cast in glass using the lost wax method. **Ongoing** - The region's largest and most diverse studio glass gallery on two sun-filled levels features artists from around the country as well as around the world. Hours: Mon.-Sat., 10:30am-5pm & Sun., noon-5pm. Contact: 828/505-8341 or at ([www.bendergallery.com](http://www.bendergallery.com)).

**BlackBird Frame & Art**, 365 Merrimon Avenue, just 3/4 mile north of downtown, Asheville. **Ongoing** - Currently, about 25 painters, photographers and crafters show their work at BlackBird. We also offer expert custom framing. Hours: Mon.-Fri., 10am-6pm & Sat., 10am-3pm. Contact: 828/252-6036 or at ([www.BlackBirdFrame.com](http://www.BlackBirdFrame.com)).

**Blue Ridge Frame & Gallery**, 545 Merrimon Ave., Asheville. **Ongoing** - Featuring works by local artist Linda Cheek, Ann Vasilik, Carol Bomer, Kelly Wilkinson, and many more. Plus a large selection of prints, posters, and quality custom framing. Hours: Mon.-Fri., 9:30am-6pm & Sat., 10am-4pm. Contact: 828/253-3559.

**Blue Spiral 1**, 38 Biltmore Ave., Asheville. **Main Gallery, Through Nov. 9** - "Folk + Figure". The brightly-colored, narrative works in this exhibit rely heavily on history, memory and folklore to explore themes of family, culture and the natural world. The exhibition features works by six of our permanent artists who work in paint, print, sculpture and ceramics including: Ke Francis, Bethanne Hill, Matt Jones, Charles Keiger, Deborah Rogers, and Noah Saterstrom. **Lower Level Gallery, Through Nov. 9** - "Take a Seat". The exhibition celebrates the chair beyond its mere function, presenting the artistic capacity of a simple object of everyday use. Often visionary, the artists in the exhibition offer complexity in style and diversity in material, blurring the

line between art and object. Featuring works by Brian Boggs, Christina Boy, Tina Councill, Annie Evelyn, Sophie Glenn, Casey Johnson, Geoffrey Keating, Ted Lott, Richard Prisco, Brent Skidmore, Kathy Triplett, and Eric Velleca. Featuring rugs by Melanie Wilder. **Showcase Gallery, Through Nov. 9** - "Reverie". New works by Blue Spiral 1 artists Jim Connell, Duy Huynh, Eric Serritella, and Kirsten Stingle present elegant, often surreal works, providing an opportunity to be transported into a dream-like space. **Small Format Gallery, Through Nov. 9** - "Introducing Frank Hursh". Blue Spiral 1 now proudly represents Black Mountain College painter Frank H. Hursh (b. 1929). Hursh attended Black Mountain College from 1949 until 1950 and has been an artist and educator in Mexico since 1956. Hursh's paintings and drawings are on view in a solo exhibition in our small format gallery as well as our permanent gallery spaces on the second level. **Upstairs Galleries, Through Oct. 5** - "Summer of Glass @ Blue Spiral 1". This is in participation with many other art organizations in Asheville and in conjunction with the Dale Chihuly exhibition at the Biltmore Estate (May 17 - Oct 7). Artists with works on view include: Dean Allison, Junichiro Baba, Rick Beck, Valerie Beck, Gary Beecham, Alex Bernstein, Robert Burch, Ken Carder, Victor Chiarizia, Shane Fero, David Goldhagen, Jan Kransberger, Robert Levin, John Littleton + Kate Vogel, Mark Peiser, Kenny Pieper, Stephen Powell, Robert Stephan, Justin Turcotte, and Hayden Wilson. **Ongoing** - Featuring works in a variety of mediums by regional, national and international artists. Hours: Mon.-Sat., 10am-6pm & Sun. noon-5pm. Contact: 828/251-0202 or at ([www.bluespiral1.com](http://www.bluespiral1.com)).

**Castell Photography**, 2C Wilson Alley off Eagle St., Asheville. **Ongoing** - The gallery is owned by internationally recognized artist Brie Castell, is a unique photographic Salon & Gallery dedicated solely to photo based media. The gallery features the work of Brie Castell, and also hosts several rotating exhibitions each year of other talented photographers. Hours: Wed.-Fri., noon-6pm, Sat., noon-7pm or by appt. Contact: 828.255.1188 or at ([www.castell-photography.com](http://www.castell-photography.com)).

**Chatsworth Art and Antiques**, 54 N. Lexington Ave., Asheville. **Ongoing** - Specializing in 19th and early 20th century oils, watercolors and prints. Also jewelry, silver, china, small furniture and fine accessories. Hours: Tue.-Sat., 11am-5pm. Contact: 828.252.6004.

**Clayspace Co-op**, River Arts District, 119A Roberts St., Asheville. **Ongoing** - The Clayspace Co-op is a cooperative ceramics studio and showroom located in the historic river arts district of Asheville, North Carolina. The main aim of the Clayspace Cooperative is to provide an environment that promotes the artistic growth and success of its members through cooperation and education. Hours: hours by chance. Contact: 828/279-3811.

**Cold River Gallery**, 32-A Biltmore Ave., Asheville. **Ongoing** - Welcome to the artistic expression of messages found in ancient wisdom, philosophies and our Earth's gifts, presented as the fine art of Karen Pierre. Working studio, jewelry, pottery. Hours: Tue.-Sat., noon-5pm. Contact: 828/350-0955.

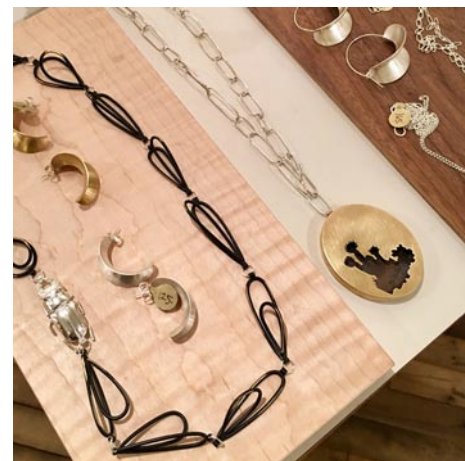
**Corey C. McNabb Studio**, River Arts District, 1 Roberts Street, Suite 201, above White Duck Taco Shop, Asheville. **Ongoing** - An Asheville native, McNabb paints only with a palette knife, applying oils or acrylics to canvas, creating bold bright images with an impressionistic impasto style. Hours: Thur.-Tue., 11am-5pm. Contact: at ([www.mcnabbfineart.com](http://www.mcnabbfineart.com)).

**CURVE studios & garden**, 6, 9 & 12 Riverside Dr., River Arts District, Asheville. **Ongoing** - Working studios of Constance Williams, Sutherland Handweaving, Patti Torno, Maria Troya, Kyle Carpenter, Akira Satake, Cynthia Wynn, Fran Welch, Jenny Mastin, Cassie Ryalls & more. Hours: 11am-4pm daily. Contact: 828/388-3526 or at ([www.CURVEstudiosNC.com](http://www.CURVEstudiosNC.com)).

**Desert Moon Designs Studios & Gallery**, 372 Depot Street, Suite 44, River Arts District, Asheville. **Ongoing** - The gallery is a progressive contemporary gallery that includes working studios. The focus of the gallery is to showcase both emerging/established local and visiting regional artists. Several times a year special exhibitions are scheduled to introduce new talent or to bring focus to a certain art medium. Hours: Mon.-Sat., 11am-5pm. Contact: 828/575-2227 or at (<http://www.desertmoondesigns-studios.com>).

**Gallery Minerva Fine Art**, 8 Biltmore Ave., Asheville. **Ongoing** - Featuring painting, sculpture, photography, ceramics and glass by local and regional artists. Hours: Mon.-Thur., 11am-6pm; Fri. & Sat., 11am-8pm; & Sun., noon-5pm. Contact: 828/255-8850 or at ([www.galleryminerva.com](http://www.galleryminerva.com)).

**Gallery of the Mountains**, Inside the Grove Park Inn, 290 Macon Ave., Asheville. **Ongoing** - Now part of the Grovewood Gallery family, featuring handcrafted wearables, jewelry, pottery and many one-of-a-kind objects. Hours: Mon.-Tue., 9am-6pm; Wed.-Sat., 9am-9pm & Sun., 9am-5pm. Contact: 828/254-2068.



Works by Audrey Laine

**Grovewood Gallery**, adjacent to The Omni Grove Park Inn, 111 Grovewood Road, Asheville. **Oct. 5 - 14** - Grovewood Gallery will be spotlighting local makers in celebration of American Craft Week, which takes place Oct. 5-14 all across the USA.

**Through Oct. 28** - "Animal Attraction," an invitational exhibition featuring animal-themed art by 13 artists who work in a variety of mediums. Participating artists include: Melissa Bennett, Mark Bettis, Josh Coté, Patricia Cotterill, Tess Darling, Todd Frahm, Kathleen Gibbs, Jordan Jones, Daniel McClendon, Eleanor Miller, Charlie Teft, Libba Tracy, and Alicia Williams. **Ongoing** - Established in 1992, Grovewood Gallery is nationally recognized for its dedication to fine American-made art and craft. Located in historic Grovewood Village, this site once housed the weaving and woodworking operations of Biltmore Industries, an Arts and Crafts enterprise that played a significant role in the Appalachian Craft Revival during the early 20th century. Today, Grovewood Gallery offers two expansive floors of finely crafted furniture, ceramics, jewelry and more, contributed by over 400 artists and craftspeople from across the United States. Hours: Mon. - Sat., 10am-5:30pm & Sun. 11am to 5pm. Contact: 828/253-7651 or at ([www.grovewood.com](http://www.grovewood.com)).

**Jewels That Dance: Jewelry Design**, 63 Haywood St., next door to the Library, Asheville. **Ongoing** - Featuring hand-crafted jewelry by some of America's foremost jewelry artists. Hours: Mon.-Sat., 10:30am-6pm. Contact: 828/254-5088 or at ([www.jewelsthatdance.com](http://www.jewelsthatdance.com)).

**Jonas Gerard Fine Art**, 240 Clingman Ave., Asheville. **Ongoing** - "Explosions of Color on Canvas". Nationally known artist Jonas Gerard displays his most recent collection of abstract acrylics. His 5,000 square foot studio / gallery is filled with years of passion and dedication. He uses bold, passionate, sweeping gestures of saturated color that form unexpected images of poetic stature. Gerard paints in house to upbeat inspiring music, come unannounced or by appointment. Hours: Mon.-Sun., 10am-6pm & by appt. Contact: 828/350-7711 or at ([www.jonasgerard.com](http://www.jonasgerard.com)).

**K2 Studio**, 59 College Street, inside The Kress Building, Asheville. **Ongoing** - Featuring a unique collection of fine furniture by local artists and pieces from around the world, home accessories and changing fine art exhibitions. Hours: Mon.-Thur., 11am-6pm; Fri. & Sat., 11am-7pm; and Sun., noon-5pm. Contact: 828/250-0500 or at ([www.k2furniture.com](http://www.k2furniture.com)).

**Kress Emporium**, 19 Patton Ave., Patton & Lexington Aves., downtown Asheville. **Ongoing** - Featuring works by over 100 artists and craftsmen. Hours: Mon.-Sat., 11am-6pm & Sun., noon-6pm. Contact: 828/281-2252 or at ([www.thekressemporium.com](http://www.thekressemporium.com)).

**Momentum Gallery**, 24 N. Lexington Ave., Asheville. **Ongoing** - located in downtown Asheville, offers a contemporary and modern program with an emphasis on emerging and mid-career artists. Occupying approximately 4000 square feet in an easily accessible, street-level space, the gallery's mission is to provide compelling, museum-quality art to our clients. Curated exhibitions featuring exceptional paintings, original prints, and innovative sculpture refresh regularly in the main spaces and smaller adjoining galleries. Momentum Gallery also participates in major art fairs exhibiting work by represented artists. Hours: Mon.-Sat., 10am-6pm & Sun. noon-5pm. Contact: 828/505-8550 or at ([www.mpmomentumgallery.com](http://www.mpmomentumgallery.com)).

**Montford Arts Center**, 235 Montford Avenue, Asheville. **Ongoing** - Featuring works in a variety of media by over twenty-five area artists. Watch artists at work. Hours: Tue.-Fri.,

continued on Page 55