

# NC Commercial Galleries

continued from Page 60

**311 - Martin St Gallery and Studios**, 311 Martin Street, Warehouse District, Raleigh. **Ongoing** - Featuring three exhibit galleries, studios by tenant artists, The Print Studio, and the meeting place for The North Carolina Printmakers. Hours: Tue.-Sat., 11am-6pm and 6-9pm on 1st Friday of the month. Contact: 919/821-2262 or at (<http://311gallery.com/>).

**Tipping Paint Gallery**, 428 S. McDowell Street, Raleigh. **Ongoing** - The gallery is a group of artists that have worked together since 2009 planning and hanging exhibits, marketing, community outreach, and supporting and encouraging each other in our artistic endeavors. In 2011, the group found a great location in the heart of downtown Raleigh where we opened Tipping Paint Gallery in June. Our mission is two-fold: to exhibit quality art on a year-round basis and to continue to strive for personal artistic growth. Hours: Thur., 11am-3pm; Fri., 11am-3pm & 5-8pm; Sat., noon-8pm or by appt. Contact: 919/928-5279.

## Randleman

**Joseph Sand Pottery**, 2555 George York Road, Randleman. **Ongoing** - Featuring wood-fired, salt and ash glazed pottery by Joseph Sand at kiln openings held three times each year. Hours: by appt. only. Contact: 612/518-4051 or 336/460-0259 and at (<http://www.jsspottery.com/>).

**New Salem Pottery**, 789 New Salem Road, Randleman. **Ongoing** - Established in 1972, New Salem Pottery is owned and operated by Hal Pugh and Eleanor Minnock-Pugh. Hal and Eleanor produce a variety of original redware and stoneware pottery. Years of work at the wheel and the subtle evolutionary convergence of originality with past traditions make their pottery recognizable by its own style. The slip decorated redware pitcher shown above is illustrative of their art. Hours: Wed.-Sat., 10am-5pm. Contact: 336/498-2178 or at ([www.newsalempottery.com/](http://www.newsalempottery.com/)).

## Rutherfordton

**Ornametals and Finer Welding, Inc.**, 142 West Court St., Rutherfordton. **Ongoing** - Featuring works by master artisan Tom Elfers. Hours: Mon.-Fri., 9am-5pm and Sat., 10am-5pm. Contact: 828/288-3001 or at ([www.ornametals1.com/](http://www.ornametals1.com/)).

## Salisbury/Spencer

**Green Goat Gallery**, 516 S. Salisbury Ave., just off I-85, across from the North Carolina Transportation Museum, Spencer. **Ongoing** - Housed in the historic 20th century Sands Building, the gallery features fine and folk art, photography, exquisite handcrafted functional crafts and jewelry, and eclectic recycled and found art by local, regional, and national artists. Hours: Tue.-Sat., 10:30am -5:30pm. Contact: 704/639-0606 or at ([www.greengoatgallery.com/](http://www.greengoatgallery.com/)).

**Pottery 101**, 101 S. Main St., from I-85, take exit #76 (Innes St.) toward downtown - we are on the corner of Innes and Main, Salisbury. **Ongoing** - The destination for beautiful handcrafted pottery. Hours: Tue.-Fri., 10am-6pm & Sat., 10am-5pm. Contact: 704/209-1632.

**Rail Walk Studios & Gallery**, 409 - 413 N Lee St., in the Rail Walk Arts District, Salisbury. **Ongoing** - Featuring works on display by Marietta F. Smith, Sharon Forthofer, Karen Frazer, Kenneth Koskela, Elizabeth H. McAdams, Julie Pontell and Keyth Kahrs. Each of the artists has a unique style and body of work. Visitors will find original art in oil, acrylic, watercolor, pastel, and other mediums, as well as sculpture, hand-made jewelry, pottery, and digital photography, making Rail Walk a great place to purchase a wide variety of original art in all price ranges. Hours: Thur.-Sat., 11am-4pm. Contact: 704/431-8964 or at ([www.railwalkgallery.com/](http://www.railwalkgallery.com/)).

**Southern Spirit Gallery**, 102 South Main St., Salisbury. **Ongoing** - The shop offers a wide array of art and crafts from over 60 artists, most from North Carolina. There is jewelry, paintings, glass and pottery. Hours: Mon.-Sat., 10am-5pm. Contact: 704/633-0761.

## Saluda Area

**Heartwood Contemporary Crafts Gallery**, 21 East Main Street, Saluda. **Ongoing** - Featuring contemporary works of handmade wearables, jewelry, paper, paintings, fine porcelain, stoneware, glass, metal and wood. Hours: Mon.-Sat., 10am-5pm & Sun., noon-5pm. Contact: 828/749-9365 or at ([www.heartwoodsaluda.com/](http://www.heartwoodsaluda.com/)).

## Seagrove Area

**A. Teague Pottery/EJ King Pottery**, 2132 Hwy. 705, Seagrove. **Ongoing** - Featuring works by several potters from the "village" with their traditional shapes of the Seagrove area. Contemporary, electric fired stoneware. Traditional glazes and melted glass glaze. Hours: Mon.-Sat., 10am-5pm. Contact: 910/464-5400.

**A.R. Britt Pottery**, 5650 Hwy. 220 S., Seagrove. **Ongoing** - Hand-turned/handmade traditional Seagrove style pottery, original formulated glazes, and functional stoneware in the tradition of Nell Cole Graves style by Aaron R. Britt. Hours: Tue.-Sat., 9am-5pm & Sun., noon-6pm. Contact: 336/873-7736 or at ([www.seagrovepottery.net/](http://www.seagrovepottery.net/)).

**Albright Pottery**, 6597 New Center Church Rd., Seagrove. **Ongoing** - Featuring traditional, salt glaze and red functional pottery by Arlie G. Albright. Hours: Tue.-Sat., 9am-5pm. Contact: 336/879-4209.

**Anita's Pottery & Dogwood Gallery**, 2513 Hwy. 705, Seagrove. **Ongoing** - Turning since 1987, Anita Morgan is best known for her miniature pottery, but also has many functional and decorative items. Glazes include cobalt blue, burgundy, hunter green, shiny black, yellow, rose pink, earthy brown, lime green and purple. Hours: Mon.-Sat., 10am-5pm. Contact: 336/879-3040 or at ([www.anitaspottery.com/](http://www.anitaspottery.com/)).

**Avery Pottery and Tileworks**, 636 Potters Way, Seagrove. **Ongoing** - Finely crafted ceramic forms by Blaine Avery. Extraordinary vessels, unique hand-painted titles. Hours: Tue.-Sat., 10am-5pm. Contact: 336/873-7923 or at ([www.averypotteryandtileworks.com/](http://www.averypotteryandtileworks.com/)).

**Ben Owen Pottery**, 2199 S. Hwy. 705, Seagrove. **Ongoing** - Wood-fired, traditional and contemporary works using local clay by Ben Owen III. Colors ranging from Chinese red to Chinese blue. Hours: Tue.-Sat., 10am-5pm (closed in Jan.). Contact: 910/464-2261 or at ([www.benowenpottery.com/](http://www.benowenpottery.com/)).

**Blue Hen Pottery**, 247 West Main Street, Seagrove. **Oct. 20, from 10am-5pm** - "Blue Hen Pottery Grand Opening". Blue Hen Pottery is proud to announce the grand opening of their new showroom! Come on out to see their labor of love filled with a fresh batch of work & enjoy some snacks & libations. **Ongoing** - Narrative pots for daily use. Wood-salt stoneware and colorful earthenware. Hours: Wed.-Sat., 10am-5pm or by appt. Contact: 336/653-9551 or at ([www.bluehenpottery.com/](http://www.bluehenpottery.com/)).

**Blue Stone Pottery**, 2215 Fork Creek Mill Rd., Seagrove. **Ongoing** - Featuring traditional, functional stoneware pottery. Hours: Tue.-Fri., 10am-4pm & Sat., 9am-5pm. Contact: 336/879-2615 or e-mail at ([audreyvalone@bellsouth.net](mailto:audreyvalone@bellsouth.net)).

**Bulldog Pottery**, 3306 Alt. 220, Seagrove. **Ongoing** - Bruce Gholson and Samantha Henneke collaborate to make graceful forms, and develop their own unique glazes. Expect distinctively unusual work at Bulldog Pottery. Hours: Tue.-Sat., 9:30am-5pm; Sun. or Mon. by chance or call. Contact: 910/428-9728 or at ([www.bulldogpottery.com/](http://www.bulldogpottery.com/)).

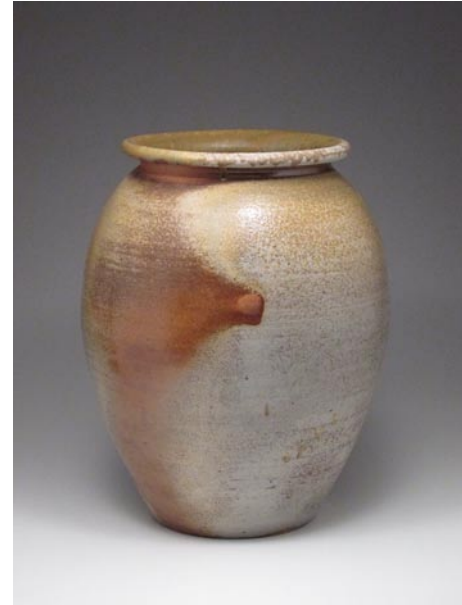
**Cady Clay Works**, 3883 Busbee Rd., Seagrove. **Ongoing** - Johannes "John" Mellage and Beth Gore work with a variety of clays and glazes to create functional and decorative ware with richly layered surfaces. Hours: Tue.-Sat., 10am-5pm or by appt. Contact: 910/464-5661 or at ([www.cadyclayworks.com/](http://www.cadyclayworks.com/)).

**Cagle Road Pottery**, 603 Cagle Rd., Seagrove. **Ongoing** - Featuring dinnerware and a wide variety of glazes. Electric, gas and wood-fired salt and ash glazes. Hours: Mon.-Sat., 8am-5pm. Contact: 336/879-2802 or e-mail at ([caglerdpottery@yahoo.com](mailto:caglerdpottery@yahoo.com)).

**Caldwell-Hohl Artworks**, 155 Cabin Trail, Seagrove. **Ongoing** - Featuring contemporary stoneware, sculptures, large garden urns and contemporary fiber art. Hours: Mon.-Sat., 10am-5pm (call first). Contact: 336/879-9090 or at ([www.caldwellhohl.com/](http://www.caldwellhohl.com/)).

**Callicutt Pottery**, 5137 Seagrove Plank Rd., Seagrove. **Ongoing** - Featuring a good selection of functional stoneware in many colors including brown, black and white, green and burgundy, green and gold, black and burgundy and yellow by Gary Callicutt. Hours: Mon.-Sat., 10am-5pm. Contact: 336/873-7898 or e-mail at ([gary51@rtelco.net](mailto:gary51@rtelco.net)).

**Carolina Crockery Gallery**, 326 Adams Road, (Just off of Hwy 705 between WhyNot and Westmoore, or take Steeds Road exit from Hwy 73/74 or Hwy 220 and head towards Seagrove, just down the road from Sid Lucks!) Seagrove. **Ongoing** - The gallery is a multi-media gallery, offering handmade pottery from Morgan Hatfield of Hatfield Pottery, Levi Mahan, and assorted potters from the area. We also carry wood art pieces including cutting boards and custom furniture from Joel Tucker of Southern Wood Creations. We have hand-blown glass from Nicuzzie Glass Designs (Nick Fruin and Suzanne Ririe), jewelry and fiber pieces from The Fuchsia Flamingo. Hours: Tue.-Fri., 2-5pm; Sat., 10am-5pm & Sun., noon to 5pm. Contact: 336/879-2426 or at ([www.carolinacrockery.com/](http://www.carolinacrockery.com/)).



Work by Chad Brown

**Chad Brown Pottery**, 2719 US 220 N., Seagrove. **Ongoing** - Featuring high fired stoneware, decorative and functional with ash and alkaline glazes, by Chad Brown. Hours: Mon.-Sat., 10am-5pm. Contact: 910/571-1691 or e-mail at ([chadcameronbrown@yahoo.com](mailto:chadcameronbrown@yahoo.com)).

**Chris Luther Pottery**, 4823 Busbee Rd., Seagrove. **Ongoing** - Featuring contemporary and functional pottery by Chris Luther, a 4th generation potter of Seagrove's Chriscoe pottery family. Hours: Tue.-Sat., 10am-5pm. Contact: 336/301-3254 or at ([www.chrislutherpottery.com/](http://www.chrislutherpottery.com/)).

**Chriscoe Pottery**, 1360 Hwy. 705, Seagrove. **Ongoing** - Featuring functional pottery including tableware, vases, and large platters. Hours: Mon.-Sat., 10am-5pm (Sept.-Dec.) & Tue.-Sat., 10am-5pm (Jan.-Aug.). Contact: 336/879-5272.

**Cross Creek Pottery**, 481 King Rd., Seagrove. **Ongoing** - Featuring decorative and functional pottery by Terry and Vivian Hunt. Hours: Mon.-Sat., 8am-5pm & Sun., 1-5pm. Contact: 336/873-8425 or at ([www.crosscreekpottery.com/](http://www.crosscreekpottery.com/)).

**Crystal King Pottery**, 2475 Hwy. 705, Seagrove. **Oct. 6 & 13** - "Annual Autumn Pottery Pumpkin Patch". Enjoy refreshments under the wisteria covered porch as you browse Crystal King's newest assortment of handmade pottery pumpkins, owl lanterns & other fall themed pieces. This year's newest pumpkin & fall designs are released at the opening. **Ongoing** - Featuring functional and decorative stoneware by Seagrove native and family-taught potter Crystal King. Face jugs, salt glazes, and folk art. Hours: Tue.-Sat., 10am-5pm. Contact: 336/879-6990 or at ([www.CrystalKingPottery.net](http://www.CrystalKingPottery.net)).

**Dean and Martin Pottery**, 7739 Nathan Lane, Seagrove. **Ongoing** - Jeff Dean and Stephanie Martin make contemporary, vibrantly glazed stoneware vessels, sculpture, and wall pieces. Hours: Tue.-Sat., 10am-5pm & Mon. by chance. Contact: 336/879-0683 or at ([www.deanandmartinpottery.com/](http://www.deanandmartinpottery.com/)).

**Dirt Works Pottery**, 1226 Hwy. 705, Seagrove. **Ongoing** - Featuring contemporary, sculptural and functional pottery; Raku, stoneware, wood-fired and salt glazed by Dan Triece. Hours: Mon.-Sat., 9:30am-5pm. Contact: 336/873-8979 or at ([www.dirtworkspottery.com/](http://www.dirtworkspottery.com/)).

**Dixieland Pottery**, 1162 Cagle Loop Rd., Seagrove. **Ongoing** - Hand-turned functional stoneware, colorful glazes to plain earth tones. Specialize in dinnerware, face jugs, etc. Hours: Mon.-Sat., 9:30am-5pm. Contact: 336/873-8463.

**Donna Craven Pottery**, 2616 Old Cox Rd., Asheboro. **Ongoing** - Featuring wood-fired salt-glazed, mostly traditional with some decorative and contemporary forms by Donna Craven. Hours: by appt. only. Contact: 336/629-8173.

**Dover Pottery**, 634 NC Hwy. 705, Seagrove. **Ongoing** - Featuring a variety of colored crystalline ware, freehand-decorated majolica, and raku by Milly, Fiva, and Zeke McCannless, but we also carry ceramic work by Allen McCannless and Stephen Baxter and quilts by Scott Murkin. Hours: Tue.-Sat., 11am-5pm. Contact: 336/879-3610 or at ([Doverpotteryseagrove.com](http://Doverpotteryseagrove.com)).

**Down To Earth Pottery**, 11792 Hwy. 24/27, Carthage. **Ongoing** - Featuring utilitarian and decorative pieces by Jim, Nick & Mary Havner. Hours: Mon.-Sat., 10am-5pm. Contact: 910/948-2619.

**Eck McCannless Pottery**, 6077 Old US Hwy. 220, Seagrove. **Ongoing** - The pottery will sell crystalline works made by this second-generation Seagrove potter but, the main focus will be on agateware, which is made by turning several different colors of clay at one time. Hours: Tue.-Sat., 10am-5pm or by appt. and open all Mon. Holidays. Contact: 336/964-4206 or at ([www.EckMcCannless.webs.com](http://www.EckMcCannless.webs.com)).

**The English Potter**, 825 Hwy. 705 S., Seagrove. **Ongoing** - Featuring hand thrown porcelain and stoneware pottery by Robert Saxby. Fine stoneware glazes range from copper red to tenmoku. Hours: Mon.-Sat., 10a-5pm & Sun., noon-4pm. Contact: 336/879-1352 or at ([www.englishpotter.com](http://www.englishpotter.com)).

**Fat Beagle Pottery**, 719 Potter's Way Rd., Seagrove. **Ongoing** - Featuring wheel-turned, gas-fired, functional and contemporary stoneware. Also features uniquely stunning, pit-fired vases. Hours: Tue., Thur. Fri., Sat., 9:30am-5pm. Contact: 336/953-0608 or e-mail at ([fatbeaglepottery@hughes.net](mailto:fatbeaglepottery@hughes.net)).

**Fiber and Fire Gallery**, 253 E Main Street, Seagrove. **Ongoing** - A gallery of wearable fiber art by Kathy Fernandez. "Sewing has been a part of my life since I was a child. Successful sewing includes the ability to "see" how fabric and design complement one another." Hours: call for hours. Contact: 336/872-4007 or at ([www.fiberandfire.net](http://www.fiberandfire.net)).

**Fireshadow Pottery**, 244 Falls Dr., Eagle Springs. **Ongoing** - Featuring one-of-a-kind "primitive elegant" ceramic art. Hours: Tue.-Sat., 10am-5pm. Contact: 910/673-8317 or at ([www.fireshadow.com](http://www.fireshadow.com)).

**Frank Neef Pottery**, 258 East Main Street, Seagrove. **Ongoing** - Featuring decorative and functional porcelain, elaborate cut out designs, with crystalline and celadon glazes. Hours: Tue.-Sat., 10am-5pm & Sun. noon-5pm. Contact: 336/872-4013 or at ([www.potterybyfrankneef.com](http://www.potterybyfrankneef.com)).

**Freeman Pottery**, 1147 McDuffie Rd., Eagle Springs. **Ongoing** - Featuring hand-turned miniatures 1/2 to 2 inches, functional ware decorated with farm scenes and vessel puzzles. Hours: Tue.-Sat., 9am-5pm. Contact: 910/673-2044 or e-mail at ([bfoushee@triad.rr.com](mailto:bfoushee@triad.rr.com)).

**From The Ground Up Pottery**, 172 Crestwood Rd., Seagrove. **Oct. 6 & 7, from 9am-5pm** - "R.D. Mahan Kiln Opening & Turkey Roast". A yearly event at From the Ground Up Pottery to celebrate pottery & family, together with friends from more than thirty years in Seagrove. There will be tree pots, soul pots, bells & more, made from local clay, fired in the wood kiln. Food served all day. **Ongoing** - Featuring handmade pottery by Michael Mahan and his two children, Chelsea and Levi. Tree platters, meditation bells, dinnerware, and southwestern glaze. Contemporary and traditional forms. Hours: Mon.-Sat., 9am-5pm (call ahead). Contact: 910/464-6228 or at ([www.fromthegrounduppots.com](http://www.fromthegrounduppots.com)).

**Graham Chriscoe Pottery**, 2719 220 N., Seagrove. **Ongoing** - Functional hand-thrown pottery using glazes of white, brown, burgundy, cobalt blue, teal blue, red and Christmas green. Hours: Mon.-Sat., 9am-5pm. Contact: 910/428-4536.

**Great White Oak Gallery**, 437 N. Broad St., Seagrove. **Ongoing** - Featuring functional thrown forms and hand-built pottery by Benjamin Burns and Bonnie Burns. Exquisitely glazed and hand decorated with rare unusual glazes and hand-painted motifs. Hours: daily 9am-5pm. Contact: 336/873-8066 or at ([www.greatwhiteoakgallery.com](http://www.greatwhiteoakgallery.com)).

**Hatfield Pottery**, 187 Atkinson Farm Rd., Seagrove. **Ongoing** - Featuring functional and whimsical art deco, as well as folk styles of hand turned pottery by Morgan Hatfield. Hours: Tue.-Sat., 10am-5pm. Contact: 336/879-8458.

**Hickory Hill Pottery**, 4539 Busbee Rd., Seagrove. **Ongoing** - Featuring traditional shapes of the area, stoneware that is functional and beautiful. Hours: Mon.-Sat., 9am-5pm. Contact: 910/464-3166.

continued on Page 62