

Think Hieronymus Bosch meets Dr. Suess. McAbee has created what appears to be an alternative 2020 narrative but read carefully. His creatures and drawings subtly comment on this year, cherry-coating some of the hard truths.

Benson Campus Galleries are operated by and for the faculty and students of the Department of Visual Arts at Greenville

Technical College and open to the public. The galleries are located on The Benson Campus on Locust Hill Road in Taylors, SC.

For further information check our SC Institutional Gallery listings, call 864/250-3051, e-mail to (fleming.markel@gvltec.edu), or visit (www.gvltec.edu/dva).

Greenville Center for Creative Arts in Greenville, SC, Features Tiger Strikes Asteroid Greenville

Greenville Center for Creative Arts in Greenville, SC, will present *Constellations*, a group exhibition organized by Tiger Strikes Asteroid Greenville (TSA GVL), on view from Oct. 2 through Nov. 25, 2020. A reception will be held on Oct. 2, from 1-8pm, with some restrictions due to the COVID-19 Pandemic. Please use this Eventbrite link (<https://www.eventbrite.com/e/gcca-first-friday-oct-2nd-tickets-120532398649?aff=ebdssbdestsearch>) to register for entry, within each hour, only 25 visitors will be allowed in the gallery. Opening remarks will be at 6:30pm.

The show was curated by TSA GVL Co-director Mark Brosseau and features work by Hamlett Dobbins, Lynne Marinelli Ghenov, Caroline Kent, Juan Logan, Alex Paik, and Esmé Thompson. This exhibition is generously sponsored by Pinnacle Financial Partners.

Constellations explores how six artists use abstraction as a navigational tool. The work in this show is developed as a way of feeling out relationships – mapping the artist's sensory experience, cultural history, personal history, or understanding of life and the universe and their minor place in it. The 'maps' that are created by the artists are not meant to be a set of instructions to get to a specific destination. They are the evidence of an investigation: a charting of the unknown as opposed to documentation of the known.

Alex Paik and Esmé Thompson both create their pieces by combining smaller units together. Thompson's installations are made up of painted pieces of aluminum that combine elements of visual language from various cultures that she has encountered on her extensive travels. The pieces are a map of her visual experience during her travels.

Paik's pieces are made up of simple geometric forms rendered in cut paper that are layered and extrapolated together in such a way that allows his pieces to show us how we experience visual phenomena.

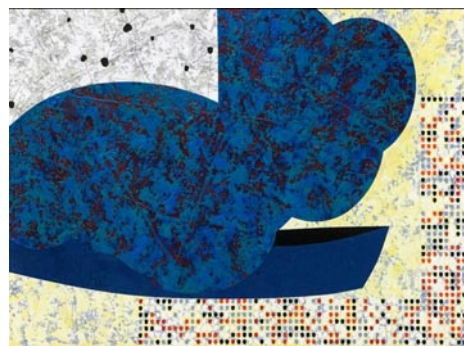
Juan Logan uses symbolic forms, patterns, and various materials to create paintings that excavate the African American experience. He charts connections from the situations of the past to the conditions of the present.

Caroline Kent and Hamlett Dobbins use painting as a way of investigating alternative systems of logic and language. Dobbins captures something elemental about specific experiences with specific people in his paintings. Kent's work is in constant translation; each painting is the next step in the evolution of language. The body of work maps out that progression.

Lynne Marinelli Ghenov uses found paper, with its own history, as the basis for her work. Her drawings represent points of intersection between the history of the paper and her own personal history.

There will be an ARTalk panel discussion at GCCA on Tuesday, Nov. 17, 2020, from 6 to 7pm as part of the exhibition. Exhibition artists Juan Logan and Alex Paik will be joined by curator Jonell Logan and creative coach and poet Uchechi Kalu to discuss how art can be a tool for navigating community.

Hamlett Dobbins (Memphis, TN) is native of Tennessee and has spent most of his life in Memphis. He received his BFA from the University of Memphis and his MFA from the University of Iowa. Dobbins has taught at University of Mississippi, Memphis College of Art, University of



Work by Juan Logan

Iowa, University of Memphis and at Rhodes College. He ran an alternative exhibition space called Material and worked as a curator at Delta Axis @ Marshall Arts as well as Clough-Hanson Gallery at Rhodes College. In 2000 he received a fellowship and residencies at the Vermont Studio Center, the Bemis Center for Contemporary Art. Dobbins has received grants from the Pollock-Krasner Foundation, the Tennessee Arts Commission, and ArtsMemphis. He has shown his work throughout the region and nationally. In 2013 he was awarded the Rome Prize and spent eleven months as a fellow at the American Academy in Rome.

Lynne Marinelli Ghenov (Knoxville, TN) is an artist primarily making drawings and works on paper. She was born in Philadelphia, Pennsylvania, spent most of her life residing on the east coast and currently lives and works in Knoxville, TN. She holds a BFA in Sculpture from Tyler School of Art in Philadelphia, PA (1998). Ghenov has shown nationally in various group and solo shows, including University City Arts League and Artspace Liberti in Philadelphia (PA), Tiger Strikes Asteroid and Monte Vista Projects in Los Angeles (CA), Proto Gallery in Hoboken (NJ), and Crosstown Arts in Memphis (TN). Her recent shows include a two-person show, *Collected Marks*, at Carson-Newman University in Jefferson City (TN) and Knoxville Local, a group exhibition for Tri-Star Arts in Knoxville (TN). In 2017 Ghenov co-founded and co-directed the artist-run space C for Courtside in Knoxville. She is currently the associate at Lohaven Artist Residency in Knoxville (TN).

Caroline Kent (Chicago, IL) is a visual artist who explores the relationship between language, translation, and abstraction through an expanded painting practice. Kent labors to expand the discourse of abstraction to include alternative logics that move beyond surface and frame through each act of translation from one medium to the next. Kent received a BA at Illinois State University (1998) and received her MFA from The University of Minnesota (2008). Kent has exhibited nationally at The Flag Art Foundation (NY), The Walker Art Center (MN), The DePaul Art Museum (Chicago), The California African American Museum (LA), The Suburban (Chicago), and The Museum of Contemporary Art (Chicago).

Kent has received grants from The Pollock-Krasner Foundation, The McKnight Foundation, and The Jerome Foundation. Most recently she is a 2020 Artadia Foundation Chicago Awardee. Kent's work is in the collections of the Walker Art Center, MN and The Art Institute of Chicago and is represented by Kohn Gallery based in Los Angeles. She currently has solo exhibition, *Victoria/Veronica: the figment between us*, on view at Tiger Strikes Asteroid Chicago.

Juan Logan (Belmont, NC) was born

continued above on next column to the right

PAUL MATHENY STORIES FROM TREES: 2015 - 2020



Night Birds, 2016, Acrylic, graphite, 11 x 14 inches

SEPTEMBER 24 - OCTOBER 31, 2020

LIVE FACEBOOK EVENT: ARTIST TALK
SEPTEMBER 26, 11AM - NOON

MEET THE ARTIST
SEPTEMBER 26, NOON - 2PM

EXHIBIT CAN BE SEEN AT THE GALLERY AND ON LINE.

HAMPTON GALLERY LTD

3110 Wade Hampton Blvd. Suite 10 Taylors, SC 29687
www.hamptoniigallery.com • email: sandy@hamptoniigallery.com
864-268-2771

in Nashville, TN, and received a Master of Fine Arts degree from the Maryland Institute College of Art. Logan's artworks address subjects relevant to the American experience. At once abstract and representational, his paintings, drawings, sculptures, installations, and videos address the interconnections of race, place, and power. They make visible how hierarchical relations and social stereotypes shape individuals, institutions, and the material and mental landscapes of contemporary life.

Logan's works can be found in private, corporate, and public collections, including the Whitney Museum of American Art, the Philadelphia Museum of Art, the Gibbs Museum of Art, the Baltimore Museum of Art, the Memphis Brooks Museum, the Zimmerli Museum of Art, and the Boulder Museum of Contemporary Art. Most recently, his piece *Some Clouds are Darker* became part of the Smithsonian's National Museum of African American History and Culture.

Alex Paik (Brooklyn, NY) is Founder and Director of Tiger Strikes Asteroid and Director at Trestle Gallery. His modular, paper-based wall installations explore perception, interdependence, and improvisation within structure while engaging with the complexities of social dynamics. He has exhibited in the US and internationally, with notable solo projects at Praxis New York, *Art on Paper 2016*, and Gallery Joe. His work has also been featured in group exhibitions at Bravin-Lee programs, Lesley Heller Workspace, and MONO Practice, among others. Paik was also the curator of the *Satellite Art Show* in Miami from 2015-2018.

Esmé Thompson (Lebanon, NH) has been influenced by her extensive travels. These experiences have informed and enlivened her art. She has been a resident of the Rockefeller Foundation and the Bogliasco Foundation in Italy studying medieval painting and decorative arts. She has travelled to Morocco to study ceramic and fiber art and to Ireland to study Celtic manuscripts and lacemaking. Most recently her travels have taken her to Australia to explore aboriginal art in Kakadu and Uluru. Thompson is Professor of Studio Art at Dartmouth College.



Work by Hamlett Dobbins

Mark Brosseau (Greer, SC) was born and raised in the Northeast Kingdom of Vermont. He received his BA from Dartmouth and his MFA from the University of Pennsylvania in 1998 and 2001, respectively. He then spent a year working in Iceland as a Fulbright Scholar. He has had fourteen solo exhibitions and been in numerous group exhibitions. His work has been featured in *New American Paintings*, and reviewed by *ArtForum*, the *Philadelphia Inquirer*, *Two Coats of Paint*, the *Artblog*, and others. He is a 2019 recipient of a Pollock-Krasner Foundation Grant and is Co-director of Tiger Strikes Asteroid Greenville.

Visitors to the Greenville Center for Creative Arts are required to wear a mask while visiting the gallery and observe responsible social-distancing behavior. The opening reception will be a ticketed event and more information about scheduling a visit and ticket will be available at (www.artcenter-greenville.org) in the coming weeks. GCCA is located in the historic Brandon Mill building on Abney Street in Greenville, SC.

For more info check our SC Institutional Gallery listings, contact TSA GVL by e-mail at (greenville@tigerstrikesasteroid.com) and GCCA at (exhibitions@artcenter-greenville.org).