

NC Commercial Galleries

continued from Page 52

at (www.appalachiancraftcenter.com).

ArtEtude Gallery, 89 Patton Avenue, Asheville. **Ongoing** - Featuring compelling contemporary art, by talented artists, for discerning collectors. Hours: Mon.-Thur., 10am-6pm; Fri.-Sat., 10am-7pm; & Sun. noon-5pm. Contact: 828/252-1466 or at (<http://artetudegallery.sqsp.com/>).

Ariel Gallery, 19 Biltmore Ave., Asheville. **Ongoing** - Presenting the best in clay, fiber, paper, books, jewelry, metal, sculpture, furniture and glass by members of the Ariel Contemporary Craft Cooperative. A gallery owned and operated by artists. Hours: Tue.-Thur., 10am-6pm; Fri. & Sat., 10am-7pm and Sun., 1-5pm. Contact: 828/236-2660 or at (www.arielcraftgallery.com).

Bellagio, 5 Biltmore Plaza, Historic Biltmore Village, Asheville. **Ongoing** - Featuring exquisitely handcrafted jewelry and clothing. Hours: Mon.-Sat., 10am-6pm & Sun., noon-5pm. Contact: 828/277-8100 or at (www.bellagioarttowear.com).

Bella Vista Art Gallery, 14 Lodge St., Historic Biltmore Village, Asheville. **Ongoing** - Featuring works by regional and national artists in a variety of mediums. Offering contemporary oil paintings, blown glass, pottery, black & white photography, stoneware sculptures, and jewelry. Hours: Mon.-Sat., 10am-6pm & Sun., 10am-4pm. Contact: 828/768-0246 or at (www.BellaVistaArt.com).

BlackBird Frame & Art, 365 Merrimon Avenue, just 3/4 mile north of downtown, Asheville. **Ongoing** - Currently, about 25 painters, photographers and crafters show their work at BlackBird. We also offer expert custom framing. Hours: Mon.-Fri., 10am-6pm & Sat., 10am-3pm. Contact: 828/252-6036 or at (www.BlackBirdFrame.com).

Blue Ridge Frame & Gallery, 545 Merrimon Ave., Asheville. **Ongoing** - Featuring works by local artist Linda Cheek, Ann Vasilik, Carol Bomer, Kelly Wilkinson, and many more. Plus a large selection of prints, posters, and quality custom framing. Hours: Mon.-Fri., 9:30am-6pm & Sat., 10am-4pm. Contact: 828/253-3559.

Blue Spiral 1, 38 Biltmore Ave., Asheville. **Ongoing** - Featuring works in a variety of mediums by regional, national and international artists. Hours: Mon.-Sat., 10am-6pm & Sun., noon-5pm. Contact: 828/251-0202 or at (www.bluespiral1.com).

Castell Photography, 2C Wilson Alley off Eagle St., Asheville. **Ongoing** - The gallery is owned by internationally recognized artist Brie Castell, is a unique photographic Salon & Gallery dedicated solely to photo based media. The gallery features the work of Brie Castell, and also hosts several rotating exhibitions each year of other talented photographers. Hours: Wed.-Fri., noon-6pm, Sat., noon-7pm or by appt. Contact: 828.255.1188 or at (www.castell-photography.com).

Chatsworth Art and Antiques, 54 N. Lexington Ave., Asheville. **Ongoing** - Specializing in 19th and early 20th century oils, watercolors and prints. Also jewelry, silver, china, small furniture and fine accessories. Hours: Tue.-Sat., 11am-5pm. Contact: 828.252.6004.

Clayspace Co-op, River Arts District, 119A Roberts St., Asheville. **Ongoing** - The Clay-space Co-op is a cooperative ceramics studio and showroom located in the historic river arts district of Asheville, North Carolina. The main aim of the Clayspace Cooperative is to provide an environment that promotes the artistic growth and success of its members through cooperation and education. Hours: hours by chance. Contact: 828/279-3811.

Cold River Gallery, 32-A Biltmore Ave., Asheville. **Ongoing** - Welcome to the artistic expression of messages found in ancient wisdom, philosophies and our Earth's gifts, presented as the fine art of Karen Pierre. Working studio, jewelry, pottery. Hours: Tue.-Sat., noon-5pm. Contact: 828/350-0955.

Corey C. McNabb Studio, River Arts District, 1 Roberts Street, Suite 201, above White Duck Taco Shop, Asheville. **Ongoing** - An Asheville native, McNabb paints only with a palette knife, applying oils or acrylics to canvas, creating bold bright images with an impressionistic impasto style. Hours: Thur.-Tue., 11am-5pm. Contact: at (www.mcnabbfineart.com).

CURVE studios & garden, 6, 9 & 12 Riverside Dr., River Arts District, Asheville. **Ongoing** - Working studios of Constance Williams, Sutherland Handweaving, Pattiy Torno, Maria Troya, Kyle Carpenter, Akira Satake, Cynthia

Wynn, Fran Welch, Jenny Mastin, Cassie Ryalls & more. Hours: 11am-4pm daily. Contact: 828/388-3526 or at (www.CURVEstudiosNC.com).

Desert Moon Designs Studios & Gallery, 372 Depot Street, Suite 44, River Arts District, Asheville. **Ongoing** - The gallery is a progressive contemporary gallery that includes working studios. The focus of the gallery is to showcase both emerging/established local and visiting regional artists. Several times a year special exhibitions are scheduled to introduce new talent or to bring focus to a certain art medium. Hours: Mon.-Sat., 11am-5pm. Contact: 828/575-2227 or at (<http://www.desertmoondesigns-studios.com>).

FW Gallery at Woolworth Walk, 25 Haywood St., Asheville. **Ongoing** - Woolworth Walk is a uniquely Asheville experience; a privately and locally owned gallery in the heart of downtown, located in a historic building and representing local artists exclusively, it is without a doubt "Worth the Walk". Hours: Mon.-Thur., 11am-6pm; Fri., 11am-7pm; Sat., 10am-7pm; & Sun., 11am-5pm. Contact: 828/254-9234 or at (www.woolworthwalk.com).

Gallery Minerva Fine Art, 8 Biltmore Ave., Asheville. **Ongoing** - Featuring painting, sculpture, photography, ceramics and glass by local and regional artists. Hours: Mon.-Thur., 11am-6pm; Fri. & Sat., 11am-8pm; & Sun., noon-5pm. Contact: 828/255-8850 or at (www.galleryminerva.com).

Gallery of the Mountains, Inside The Omni Grove Park Inn, 290 Macon Ave., Asheville. **Ongoing** - Showcasing American handmade crafts by more than 100 artists and craftspeople from the Southern Appalachian region. Mon.-Wed., 9am-6pm; Thurs.-Sat., 9am-9pm & Sun., 9am-5pm. Contact: 828/254-2068.

Groveswood Gallery, adjacent to The Omni Grove Park Inn, 111 Groveswood Road, Asheville. **Ongoing** - Established in 1992, Groveswood Gallery is nationally recognized for its dedication to fine American-made art and craft. Located in historic Groveswood Village, this site once housed the weaving and woodworking operations of Biltmore Industries, an Arts and Crafts enterprise that played a significant role in the Appalachian Craft Revival during the early 20th century. Today, Groveswood Gallery offers two expansive floors of finely crafted furniture, ceramics, jewelry and more, contributed by over 400 artists and craftspeople from across the United States. Hours: Mon. - Sat., 10am-5:30pm & Sun. 11am to 5pm. Contact: 828/253-7651 or at (www.groveswood.com).

Ignite Jewelry Studios, second story of Riverview Station, 191 Lyman St, #262, Asheville. **Ongoing** - Ignite Jewelry Studios, a project co-founded by local jewelers Jessica Hall, owner of Bluebird Designs, and Nora McMullen, owner of Nora Julia. Ignite Jewelry Studios has a fully-stocked shared space for experienced jewelers to use the equipment, create together and grow their skills. Weekly jewelry workshops are taught covering a variety of jewelry techniques for all skill levels. Gallery Hours: Tue.-Sat., 11-4pm. Contact: 828/552-4805 or at (www.ignitejewelrystudios.com).

Jewels That Dance: Jewelry Design, 63 Haywood St., next door to the Library, Asheville. **Ongoing** - Featuring hand-crafted jewelry by some of America's foremost jewelry artists. Hours: Mon.-Sat., 10:30am-6pm. Contact: 828/254-5088 or at (www.jewelsthatdance.com).

Jonas Gerard Fine Art, 240 Clingman Ave., Asheville. **Ongoing** - Featuring works by nationally known artist Jonas Gerard (1941-2020). The 5,000 square foot studio / gallery is filled with years of passion and dedication. He used bold, passionate, sweeping gestures of saturated color that form unexpected images of poetic stature. Hours: Mon.-Sun., 10am-6pm & by appt. Contact: 828/350-7711 or at (www.jonasgerard.com).

K2 Studio, 59 College Street, inside The Kress Building, Asheville. **Ongoing** - Featuring a unique collection of fine furniture by local artists and pieces from around the world, home accessories and changing fine art exhibitions. Hours: Mon.-Thur., 11am-6pm; Fri. & Sat., 11am-7pm; and Sun., noon-5pm. Contact: 828/250-0500 or at (www.k2furniture.com).

Kress Emporium, 19 Patton Ave., Patton & Lexington Aves., downtown Asheville. **Ongoing** - Featuring works by over 100 artists and craftsmen. Hours: Mon.-Sat., 11am-6pm & Sun.,

noon-6pm. Contact: 828/281-2252 or at (www.thekressemporium.com).

Mark Bettis Studio & Gallery, 123 Roberts Street, in the Wedge Building, Asheville. **Ongoing** - Featuring works by Mark Bettis Hours: Mon.-Thur., 10am-4pm & Fri.-Sat., 10am-5pm. Contact: Mark Bettis at 941/587-9502 or e-mail to (markdbettis@gmail.com).

Momentum Gallery, 24 N. Lexington Ave., Asheville. **Ongoing** - located in downtown Asheville, offers a contemporary and modern program with an emphasis on emerging and mid-career artists. Occupying approximately 4000 square feet in an easily accessible, street-level space, the gallery's mission is to provide compelling, museum-quality art to our clients. Curated exhibitions featuring exceptional paintings, original prints, and innovative sculpture refresh regularly in the main spaces and smaller adjoining galleries. Momentum Gallery also participates in major art fairs exhibiting work by represented artists. Hours: Mon.-Sat., 10am-6pm & Sun. noon-5pm. Contact: 828/505-8550 or at (momentumgallery.com).

Montford Arts Center, 235 Montford Avenue, Asheville. **Ongoing** - Featuring works in a variety of media by over twenty-five area artists. Watch artists at work. Hours: Tue.-Fri., 11:30am-6pm & Sat., 11:30am-5pm. Contact: 828/777-1014.

Mountain Made, Grove Arcade Public Market, 1 Page Ave., Suite 123, Asheville. **Ongoing** - Featuring the work of over a 150 WNC artisans, in both contemporary and traditional mountain handcrafts. This one-of-a-kind, gallery and gift shop caters to those shoppers who wish to take a "piece of the mountains" home with them. Hours: Mon.-Sat., 10am-6pm & Sun., noon-5pm. Contact: 828/350-0307 or at (www.mtnmade.com).

Mudhunter Pottery, 66 Broadway St., Asheville. **Ongoing** - Featuring a rustic gallery shop showcasing functional and sculptural work from over 20 local potters. Our artists' diverse styles at affordable prices set them apart. Hours: Tue.-Thur., 11am-5:30pm & Fri. & Sat., 11am-6pm. Contact: 828/225-5869.

New Morning Gallery, 7 Boston Way, Historic Biltmore Village, Asheville. **Ongoing** - Featuring fine art and crafts by some of America's finest artists. Hours: Mon.-Sat., 10am-7pm & Sun., noon-5pm. Contact: 828/274-2831 or at (www.newmoringgallerync.com).

Overström Studio, 35 Wall St., Asheville. **Ongoing** - This architecturally significant gallery exclusively represents work by internationally-recognized designer Michael Overström, who with his wife Susan, present their original, handformed jewelry designs that embrace the designer's Scandinavian heritage and define Asheville's elegant style. Hours: Tue.-Sat., 10am-8pm. Contact: 828/258-1761 or at (www.overstrom.com).

Pink Dog Creative Gallery, 348 Depot Street, in the River Arts District, Asheville. **Through 2020** - "In Solidarity," an online exhibition by Pink Dog Creative artists and associated friends, seeks to speak to the violence, fear and grief caused by centuries of injustice to Black people and to celebrate the many contributions made by people of African descent to the culture of this country and the world. At Pink Dog we stand for justice and equity for everyone. We are outraged and saddened by the recent deaths of George Floyd, Ahmaud Arbery and Breonna Taylor and the unnecessary violence against Johnnie Rush in our own city. These names are only the more recent victims in a long history of racism in this country. We believe that artists speak to our times and that art can uplift, enlighten and encourage dialogue. Art can be a vehicle for social change. Up to 100% from the sale of art from this exhibition will go to the following charities whose mission is justice and equity, Black Lives Matter, BeLoved Asheville, and the Equal Justice Initiative. We encourage you to join us in donating to organizations that are working to progress racial equality. Pink Dog Creative will match all donations from sales from this exhibition. Participating artists include: Patti Anastasi, Casimir Bationo, Ralph Burns, Christie Calaycay, Deanna Chilian, Cleaster Cotton, Heather Davis, Holly de Saillan, Andrea Kulish, James Love, Joseph Pearson, Patricia Phillips, Jenny Pickens, Anita Shwartz, Viola Spells, Stephen St. Claire, and Noel Yovovich. The exhibition link is (<http://www.pinkdog-creative.com/in-solidarity>). Hours: Fri. & Sat., 11am-5pm or by chance. Contact: (www.pinkdog-creative.com).

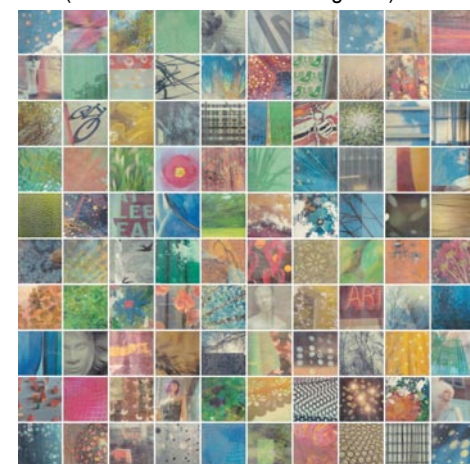
Pura Vida, 39-B Biltmore Ave., Asheville. **Ongoing** - Featuring a space for the senses, offering the finest in artwork appealing to all five senses. Hours: daily noon-10pm. Contact: 828/271-6997 or at (www.pura-vida-asheville.com).

16 Patton Fine Art Gallery, 16 Patton Avenue, Asheville. **Ongoing** - Featuring works by William McCullough, Deborah Squier, John MacKah, Greg Osterhaus, Jerry La Point, Richard Oversmith, Scott Lowery, Dawn Rentz, Laura Young, Margaret Dyer, Suzy Schultz and Stuart Roper. Studio glass by Herman Leonhardt. Hours: Mon.-Sat., 10am-6pm & Sun., 1-6pm. Contact: 828/236-2889.

Sky + Ground Contemporary Art, Riverview Station, #256, 191 Lyman Street, Asheville. **Ongoing** - Featuring works by Peter Roux, Deanna Chilian, Christopher Peterson, Colleen Lineberry, and Karen Philippi. Hours: call ahead for hours. Contact: 617/947-4869 or at (<http://skygroundart.net>).

Studio B Custom Framing & Fine Art, Reynolds Village (near the Woodfin YMCA) 61 N. Merrimon Ave., Suite 109, Asheville. **Ongoing** - Browse our new gallery featuring works by national and international artists, including paintings, prints & posters, jewelry, ceramics, wood and textiles. Also offering custom framing. Hours: Tue.-Fri., 10am-5:30pm & Sat., 10am-3pm. Contact: 828/225-5200 or at (www.galleryatstudiob.com).

Sutherland Handweaving Studio, 122 Riverside Dr., inside Cotton Mill Studios in River Arts District, Asheville. **Ongoing** - This handweaving studio, gallery and learning center features fine, one-of-a-kind and limited edition handwoven fashion accessories and household textiles, including scarves, shawls, garments, handbags, towels, table linens, blankets and wall art. Sutherland also offers a series of classes and workshops for beginning weavers, weavers needing a refresher course or experienced weavers. A monthly Sutherland Weavers' Study Group brings area weavers together to discuss design challenges, share successes and work through problems in a casual, small group format. Hours: Tue.-Sat., from 10am-4pm. Contact: Barb Butler, 828/513-1814, or Karen Donde, 854/261-4324, or at (www.sutherlandhandweaving.com).



Work by Erin Keane

310 ARTGallery, 191 Lyman St, #310, Asheville. **Ongoing** - Featuring original, contemporary fine art by 21 regional artists. Hours: Sat., 11am-4pm or by appt., e-mail to (gallery@310art.com) to make an appt. Contact: 828-776-2716 or at (<http://www.310art.com/main/>).

352 Depot St. Fine Art Studio, 352 Depot Street, Suite 110, next to The Junction Restaurant, River Arts District, Asheville. **Ongoing** - Working artists studio of Richard C. Nelson, Jeff Pittman, Karen Weihs and Constance Vlahoulis. Hours: Tue.-Sat., 11am-5pm. Contact: 828/329-2918 or at (<http://www.riverartsdistrict.com/352-depot-street-studio.html>).

The Haen Gallery, 52 Biltmore Ave., a few steps south of the movie theatre, Asheville. **Ongoing** - Committed to providing access to stunning and unique artwork for discerning collectors and our community in general. Our offerings will reflect the character and sensibilities of this wonderful region. Including works by Lynn Boggess, GC Myers, Jerry Bowman, Alvena McCormick, Volkmar Wentzel, and MM Pipkin. Hours: Mon.-Fri., 10am-6pm; Sat., 11am-6pm; and Sun., noon-5pm. Contact: 828/254-8577 or at (www.thehaengallery.com).

The Satellite Gallery, 55 Broadway, Asheville. **Ongoing** - Featuring works by the next wave of innovative and creative artists that are rising from the underground of contemporary street and pop culture. Hours: Tue.-Sat., 11am-6pm & Sun., 11am-5pm. Contact: 828/505-2225 or at (www.thesatellitegallery.com/).

The Updraft Fine Art Gallery, 84 Walnut Street, directly across from Zambra's and right around the corner from Malaprops, Asheville. **Ongoing** - The gallery is owned and operated by four local artists including: Andrew Montrie, Matt Christie, Minne Kane and William Hunter. It is run by artists for artists and features exhibitionary glass blowing and pottery throwing. Additional works of art offered are functional fine woodwork, jewelry, encaustic, mixed media

continued on Page 54