

NC Commercial Galleries

continued from Page 72



Work by Tina Curry

Groveswood Gallery, adjacent to The Omni Grove Park Inn, 111 Groveswood Road, Asheville. **Oct. 12 - Dec. 31** - "Into the Wild: Tina Curry Solo Exhibition". A reception will be held on Oct. 12, from 2-5pm. Groveswood Gallery welcomes you to embark on a captivating journey "Into the Wild." You'll get to experience a spectacular showcase of animal sculptures by Tina Curry, an accomplished ceramic and bronze sculptor based in Knoxville, Tennessee. Curry began working with clay over 30 years ago. Her sculptures are hand-built, and each has its own distinctive personality and characteristics. Tina's signature finishes result from utilizing alternative firing techniques with natural elements. **Ongoing** - Established in 1992, Groveswood Gallery is nationally recognized for its dedication to fine American-made art and craft. Located in historic Groveswood Village, this site once housed the weaving and woodworking operations of Biltmore Industries, an Arts and Crafts enterprise that played a significant role in the Appalachian Craft Revival during the early 20th century. Today, Groveswood Gallery offers two expansive floors of finely crafted furniture, ceramics, jewelry and more, contributed by over 400 artists and craftspeople from across the United States. Hours: Mon. - Sat., 10am-5:30pm & Sun. 11am to 5pm. Contact: 828/253-7651 or at (www.groveswood.com).

Ignite Jewelry Studios, second story of Riverview Station, 191 Lyman St, #262, Asheville. **Ongoing** - Ignite Jewelry Studios, a project co-founded by local jewelers Jessica Hall, owner of Bluebird Designs, and Nora McMullen, owner of Nora Julia. Ignite Jewelry Studios has a fully-stocked shared space for experienced jewelers to use the equipment, create together and grow their skills. Weekly jewelry workshops are taught covering a variety of jewelry techniques for all skill levels. Gallery Hours: Tue.-Sat., 11-4pm. Contact: 828/552-4805 or at (www.ignitejewelrystudios.com).



Work by Jaime Byrd

Jaime Byrd Contemporary Art, 375 Depot Street, (former Magnetic Theater) Asheville. **Ongoing** - Featuring the works of Jaime Byrd. Hours: N/A. Contact: Adam Cohen, Gallery Manager by e-mail at (art@jaimebyrd.com), call 323/418-2326 or visit (www.jaimebyrd.com).

Jewels That Dance: Jewelry Design, 63 Haywood St., next door to the Library, Asheville. **Ongoing** - Featuring hand-crafted jewelry by some of America's foremost jewelry artists. Hours: Mon.-Sat., 10:30am-6pm. Contact: 828/254-5088 or at (www.jewelsatdance.com).

Jonas Gerard Fine Art, 240 Clingman Ave., Asheville. **Ongoing** - Featuring works by nationally known artist Jonas Gerard (1941-2020). The 5,000 square foot studio / gallery is filled with years of passion and dedication. He used bold, passionate, sweeping gestures of saturated color that form unexpected images of poetic stature. Hours: Mon.-Sun., 10am-6pm & by appt. Contact: 828/350-7711 or at (www.jonasgerard.com).

K2 Studio, 59 College Street, inside The Kress Building, Asheville. **Ongoing** - Featuring a unique collection of fine furniture by local artists and pieces from around the world, home accessories and changing fine art exhibitions. Hours: Mon.-Thur., 11am-6pm; Fri. & Sat., 11am-7pm; and Sun., noon-5pm. Contact: 828/250-0500 or at (www.k2furniture.com).

Kress Emporium, 19 Patton Ave., Patton & Lexington Aves., downtown Asheville. **Ongoing** - Featuring works by over 100 artists and craftsmen. Hours: Mon.-Sat., 11am-6pm & Sun., noon-6pm. Contact: 828/281-2252 or at (www.thekressemporium.com).



Work by Mark Bettis

Mark Bettis Downtown Gallery, 15 Broadway Street, Asheville. **Ongoing** - Featuring works by Mark Bettis, Deb Williams, Asher Zev Holman, Nabil El Jaouhari, David Sheldon, GrantPenny, Cason Rankin, Samantha Edmiston, Balsam Abo Zour, and Tess Darling. Hours: Mon-Thur., 11am-5pm; Fri.-Sat., 11am-6pm; & Sun. by appt. Contact: Mark Bettis at 941/587-9502 or e-mail to (markdbettis@gmail.com).

Mark Bettis Studio & Gallery, 123 Roberts Street, in the Wedge Studios Building, Asheville. **Oct. 12 - 26** - "All Creatures, A Group Exhibition". A reception will be held on Oct. 12, from 5:30-7:30pm. The exhibit features works by 11 local and national artists who will be using mixed media, clay, glass and painting to create their interpretation of creatures far and wide. **Ongoing** - Featuring works by Mark Bettis, Deb Williams, Asher Zev Holman, Nabil El Jaouhari, David Sheldon, GrantPenny, Cason Rankin, Samantha Edmiston, Balsam Abo Zour, and Tess Darling. Hours: Mon.-Sat., 10am-5pm. Contact: Mark Bettis at 941/587-9502 or e-mail to (markdbettis@gmail.com).

Momentum Gallery, 24 N. Lexington Ave., Asheville. **Ongoing** - located in downtown Asheville, offers a contemporary and modern program with an emphasis on emerging and mid-career artists. Occupying approximately 4000 square feet in an easily accessible, street-level space, the gallery's mission is to provide compelling, museum-quality art to our clients. Curated exhibitions featuring exceptional paintings, original prints, and innovative sculpture refresh regularly in the main spaces and smaller adjoining galleries. Momentum Gallery also participates in major art fairs exhibiting work by represented artists. Hours: Mon.-Sat., 10am-6pm & Sun. noon-5pm. Contact: 828/505-8550 or at (momentumgallery.com).

Montford Arts Center, 235 Montford Avenue, Asheville. **Ongoing** - Featuring works in a variety of media by over twenty-five area artists. Watch artists at work. Hours: Tue.-Fri., 11:30am-6pm & Sat., 11:30am-5pm. Contact: 828/777-1014.

Mountain Made, Grove Arcade Public Market, 1 Page Ave., Suite 123, Asheville. **Ongoing** - Featuring the work of over a 150 WNC artisans, in both contemporary and traditional mountain handcrafts. This one-of-a-kind, gallery and gift shop caters to those shoppers who wish to take a "piece of the mountains" home with them. Hours: Mon.-Sat., 10am-6pm & Sun., noon-5pm. Contact: 828/350-0307 or at (www.mountainmade.com).

mtnmade.com).

Mudhunter Pottery, 66 Broadway St., Asheville. **Ongoing** - Featuring a rustic gallery shop showcasing functional and sculptural work from over 20 local potters. Our artists' diverse styles ad affordable prices set them apart. Hours: Tue.-Thur., 11am-5:30pm & Fri. & Sat., 11am-6pm. Contact: 828/225-5869.

New Morning Gallery, 7 Boston Way, Historic Biltmore Village, Asheville. **Ongoing** - Featuring fine art and crafts by some of America's finest artists. Hours: Mon.-Thur., 10am-6pm; Fri. & Sat., 10am-7pm. Contact: 828/274-2831 or at (www.newmoringgallerync.com).

On The Wing Gallery, 20 Artful Way, #105, (20 Park Ave.), Asheville. **Ongoing** - Asheville's newest contemporary art galleries specializing in entomological art. A space that explores the imagination and beauty of butterflies, wing-inspired jewelry, and other artworks inspired by nature. Hours: Thur.-Mon., 11am-5pm. Contact: 828/702-4639 or at (onthewingavl.com).

Overström Studio, 35 Wall St., Asheville. **Ongoing** - This architecturally significant gallery exclusively represents work by internationally-recognized designer Michael Overström, who with his wife Susan, present their original, handformed jewelry designs that embrace the designer's Scandinavian heritage and define Asheville's elegant style. Hours: Tue.-Sat., 10am-8pm. Contact: 828/258-1761 or at (www.overstrom.com).

Pink Dog Creative Gallery, 348 Depot Street, in the River Arts District, Asheville. **Through Oct. 27** - "withheld," featuring works by Constance Ensner. Pivoting from her usual studied realms of clothing and jewelry design, Constance is now exploring painted and collaged works that delve into the inner world of emotions, and her potent memories of a childhood disrupted. Hours: Fri. & Sat., 11am-5pm or by chance. Contact: 828/776-3034 or at (www.pinkdog-creative.com).

Pura Vida, 39-B Biltmore Ave., Asheville. **Ongoing** - Featuring a space for the senses, offering the finest in artwork appealing to all five senses. Hours: daily noon-10pm. Contact: 828/271-6997 or at (www.pura-vida-asheville.com).

Revolve Gallery, 821 Riverside Dr #179, Asheville. **Ongoing** - Revolve is a contemporary art space that functions as part gallery, part studio, part performance and gathering space. Hours: daily 11am-7pm. Contact: 240/298-9575 or at (revolveavl.org).

16 Patton Fine Art Gallery, 16 Patton Avenue, Asheville. **Ongoing** - Featuring works by William McCullough, Deborah Squier, John MacKah, Greg Osterhaus, Jerry La Point, Richard Oversmith, Scott Lowery, Dawn Rentz, Laura Young, Margaret Dyer, Suzy Schultz and Stuart Roper. Studio glass by Herman Leonhardt. Hours: Mon.-Sat., 10am-6pm. Contact: 828/236-2889.

Sky + Ground Contemporary Art, Riverview Station, #256, 191 Lyman Street, Asheville. **Ongoing** - Featuring works by Peter Roux, Deanna Chilian, Christopher Peterson, Colleen Lineberry, and Karen Philippi. Hours: call ahead for hours. Contact: 617/947-4869 or at (<http://skygroundart.net>).

Studio B Custom Framing & Fine Art, Reynolds Village (near the Woodfin YMCA) 61 N. Merrimon Ave., Suite 109, Asheville. **Ongoing** - Browse our new gallery featuring works by national and international artists, including paintings, prints & posters, jewelry, ceramics, wood and textiles. Also offering custom framing. Hours: Tue.-Fri., 10am-5:30pm & Sat., 10am-3pm. Contact: 828/225-5200 or at (www.galleryatstudiob.com).

Studio Tabula Rasa, River Arts District, 191 Lyman Street, Suite #160 (ground floor) Asheville. **Ongoing** - Featuring works in pottery, encaustics, and jewelry by Reiko Miyagi. Hours: Mon.-Sat., noon-5pm, closed Tue. Contact: at (reiko-miyagi.squarespace.com).

Sutherland Handweaving Studio, 122 Riverside Dr., inside Cotton Mill Studios in River Arts District, Asheville. **Ongoing** - This handweaving studio, gallery and learning center features fine, one-of-a-kind and limited edition handwoven fashion accessories and household textiles, including scarves, shawls, garments, handbags, towels, table linens, blankets and wall art. Sutherland also offers a series of classes and workshops for beginning weavers, weavers needing a refresher course or experienced weavers. A monthly Sutherland Weavers' Study Group brings area weavers together to discuss design challenges, share successes and work through problems in a casual, small group format. Hours: Tue.-Sat., from 10am-4pm. Contact: Barb Butler,

828/513-1814, or Karen Donde, 854/261-4324, or at (www.sutherlandhandweaving.com).

310 ARTGallery, 191 Lyman St, #310, Asheville. **Ongoing** - Featuring original, contemporary fine art by 21 regional artists. Hours: Sat., 11am-4pm or by appt., e-mail to (gallery@310art.com) to make an appt. Contact: 828-776-2716 or at (<http://www.310art.com/main/>).

352 Depot St. Fine Art Studio, 352 Depot Street, Suite 110, next to The Junction Restaurant, River Arts District, Asheville. **Ongoing** - Working artists studio of Richard C. Nelson, Jeff Pittman, Karen Weihs and Constance Vlahoulis. Hours: Tue.-Sat., 11am-5pm. Contact: 828/329-2918 or at (<http://www.riverartsdistrict.com/352-depot-street-studio.html>).

362 Depot Studios, 362 Depot Street, River Arts District, Asheville. **Ongoing** - featuring 10 artist's studios. Hours: hours change day to day. Contact: 828/552-4723.

The Haen Gallery, 52 Biltmore Ave., a few steps south of the movie theatre, Asheville. **Ongoing** - Committed to providing access to stunning and unique artwork for discerning collectors and our community in general. Our offerings will reflect the character and sensibilities of this wonderful region. Including works by Lynn Boggess, GC Myers, Jerry Bowman, Alvena McCormick, Volkmar Wentzel, and MM Pipkin. Hours: Mon.-Fri., 10am-6pm; Sat., 11am-6pm; and Sun., noon-5pm. Contact: 828/254-8577 or at (www.thehaengallery.com).

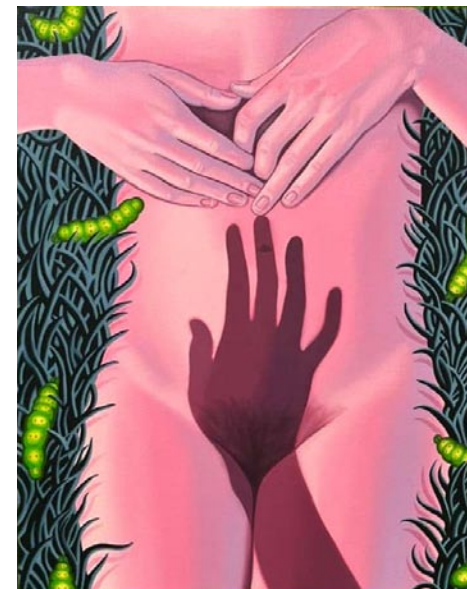
The Satellite Gallery, 55 Broadway, Asheville. **Ongoing** - Featuring works by the next wave of innovative and creative artists that are rising from the underground of contemporary street and pop culture. Hours: Tue.-Sat., 11am-6pm & Sun., 11am-5pm. Contact: 828/505-2225 or at (www.thesatellitegallery.com/).

The Updraft Fine Art Gallery, 84 Walnut Street, directly across from Zambros and right around the corner from Malaprops, Asheville. **Ongoing** - The gallery is owned and operated by four local artists including: Andrew Montrie, Matt Christie, Minne Kane and William Hunter. It is run by artists for artists and features exhibitionary glass blowing and pottery throwing. Additional works of art offered are functional fine woodwork, jewelry, encaustic, mixed media and oil painting, photography, metal and leather work. All exclusively from local area artists. Hours: Sun., Mon.-Thur., 11am-7pm and Fri.-Sat., 11am-9pm. Contact: 828-582-2112.

Trackside Studios, 375 Depot Street, River Arts District, Asheville. **Ongoing** - Our new spaces on the main and mezzanine levels feature 9 working studios, numerous display areas, and a dedicated classroom. We're growing from 40 artists to almost 60 and are excited to share their creativity with you. Hours: Open 7 days a week from 11am to 4pm & by appt. Contact: 828/545-2904 or at (www.trackside-studios375.com).

Tracey Morgan Gallery, 188 Coxe Avenue, Asheville. **Ongoing** - Contemporary art gallery specializing in museum quality photography, works on paper, sculpture, painting and video by emerging and established artists. Hours: Tue.-Sat., 11am-5pm. Contact: 828/505-7667 or at (www.traceymorgangallery.com).

22 London, 22 London Road, Asheville. **Ongoing** - a 10,000 square foot artist-driven studio/warehouse/exhibition space. Hours: by appt only. Contact: Randy Shull, at 828/216-1337, or e-mail at (randy.shull@gmail.com) or Hedy Fischer at 828/216-1331.



Work by Navi Naisang

Tyger Tyger Gallery, 191 Lyman Street, Suite #144, River Arts District at Riverview Station, Asheville. **Oct. 4 - 20** - Featuring an exhibit of works by Navi Naisang. A reception will be held

continued on Page 74