

SC Institutional Galleries

Allendale

Salkehatchie Arts Center, 939 N. Main St., Allendale. **Ongoing** - Featuring a retail store offering works by artists from the Salkehatchie region including Allendale, Bamberg, Barnwell, Colleton, and Hampton Counties. Hours: Tue.-Sat., 10am-5pm. Contact: 803/584-6084 or at (www.salkehatchie-arts.com).

Aiken



Work by Judy Adamick

Aiken Center for the Arts, 122 Laurens St., SW, Aiken. **Aiken Artist Guild Gallery, Nov. 1 - 30** - "Americana That Tugs at Your Heart". A reception will be held on Nov. 17, from 6-8pm. Artists Anne Rauton Smith and Judy Adamick have been friends for 23 years and began exhibiting their work together in 2010. Hours: Tue.-Fri., 9:30am-5:30pm. Contact: 803/641-9094 or at (www.aikencentrethearts.org).

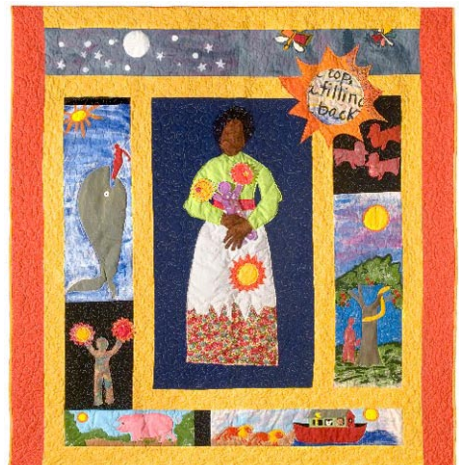
ALTERNATE ART SPACES - Aiken **Hitchcock Health Center**, 690 Medical Park Drive, Aiken. **Nov. 1 - 30** - Featuring an exhibit of works by North Augusta artist Marcia Bergtholdt. The artist's training has been focused on colorists theories of Henry Hensche back to Matisse. Her work in oil will represent a variety of subject. The exhibit is sponsored by the Aiken Artist Guild. Hours: Mon.-Fri., 5am-9pm; Sat., 8am-3pm; & Sun., 1-6pm. Contact: 803/648-8344 or visit the Aiken Artist Guild at (www.aikenartistguild.org).

Anderson

Anderson Arts Center, located in the Arts Warehouse, 110 Federal Street, downtown Anderson. **Nov. 18 - Dec. 30** - "Contemporary Christmas Exhibition," featuring artworks by Jane Doyle, Philip Gott, Diana Gurri, Patricia Kilburg, Barbara Stitt and Carole Tinsley. Hours: Tue.-Fri., 9:30am-5:30pm. Contact: 864/222-2787 or at (www.andersonartscenter.org).

Bay3 Artisan Gallery, located in the Arts Warehouse, 110 Federal St., Anderson. **Ongoing** - Featuring fine art paintings, jewelry, pottery and photography by Jos Acaba, Lynne Burke, Marion Carroll, Nathan & Amy M. Kuhl Cox, Liz Smith-Cox, John Davis, Jamie Davis, Ann Heard, Ruth Hopkins, Kate Krause, Brian MacCormack, Rosemary Moore, Johnny Nutt, Nancy Perry, Mary Lynn Pond, Diann Simms, Chris Troy, and Armi Tuorila. Co-sponsored by the Anderson Arts Center. Hours: Tue.-Fri., noon-5pm, & Sat., 10am-1pm. Contact: 864/716-3838 or at (www.andersonartscenter.org).

Beaufort Area



Work by Dorothy Montgomery

Gallery @ ARTworks, home of the Arts Council of Beaufort County, 2127 Boundary St., near K-Mart, in Beaufort Town Center, Beaufort. **Nov. 4 - Dec. 31** - "The Story Quilts of Dorothy Montgomery". A reception will be held on Nov. 4, from 6-8pm. Montgomery shares her collection of story quilts, her handiwork that tells many important histories so well: The Fox and the Crow; How Ragtime Left the Delta; Allelujah and how she got her name; the Quilt begun with Found Objects; Gullah baptisms and "spiritual pillows"; and many more of the colorful

figures in Montgomery's life and knowledge. She is adept at pulling the threads of textile arts and symbolism through hearts and time. **Ongoing** - Featuring the work and creative processes of new and emerging artists. Hours: Mon.-Fri., 10am-5pm. Contact: 843-379-2787 or at (www.beaufortcountyarts.com).

New Location

Beaufort Art Association Gallery, 913 Bay Street, across the street from the Clock Tower, Beaufort. **Through Nov. 12** - "Time to Paint," featuring an exhibit of watercolors by Audrey Montgomery. **Ongoing** - New works by more than 90 exhibiting members of the Beaufort Art Association Gallery - exhibits and featured artists change every six weeks. In addition to framed paintings in a variety of media, the gallery offers prints, photographs, unframed matted originals, jewelry, sculpture, ceramics and greeting cards. Hours: Mon.-Fri., 10 am-5pm. Contact: 843/521-4444 or at (www.beaufortartassociation.com).



Work by Luther Vann

York W. Bailey Museum, Penn Center, St. Helena Island. **Nov. 11 - Dec. 31** - "Songs of My People," featuring an exhibit of works by renowned artist Luther Vann of Savannah, GA. A reception will be held on Nov. 11, starting at 5:30pm. (admission). A student of the masters of the Harlem Renaissance, Vann's artistic expressiveness encompasses virtually every visual medium—painting, photography, sculpture, and digital creations. Hours: Mon.-Sat., 11am-4pm. Contact: 843/838-2432 or at (www.penncenter.com).

ALTERNATE ART SPACES - Beaufort **Penn Center**, St. Helena Island. **Nov. 10 - 12** - "29th Annual Heritage Days Celebration". Art by Lowcountry African American Artists will also be on sale in the Frissell Community House over the weekend. Traditional Gullah artisans will also demonstrate crafts, such as net making, boat building, indigo dyeing, and basket making, that link the Gullah people to their West African ancestry. Hours: call ahead. Contact: 843/838-2432 or at (www.penncenter.com).

Belton

Belton Center for the Arts, 306 North Main Street, Belton. **Through Nov. 14** - "13th Annual Standpipe Juried Art Show". Hours: Wed.-Fri., 10am-5:30pm & Sat. 10am-2pm. Contact: 864/338-8556 or at (www.beltonsc.com).

Bluffton

Society of Bluffton Artists Gallery/Learning Center, 8 Church Street, corner of Calhoun and Church Street, Bluffton. **Through Nov. 5** - "Fresh Paint," featuring an exhibit of artworks by Murray Sease. These oil paintings are bright and lively portraits, landscapes, and scenes of lowcountry life. **Nov. 7 - Dec. 17** - "Treasures of El Yunque: Puerto Rico's Rain Forest," featuring watercolors by Barbara Z. Pecce. A reception will be held on Nov. 13, from 3-5pm. **Ongoing** - Featuring works in a variety of mediums by over 80 area artists, with all work moderately priced. Changing shows every six weeks. Hours: Mon. 11am-3pm & Tue.-Sat., 10am-5pm. Contact: 843/757-6586.

Camden

Bassett Gallery, Fine Arts Center of Kershaw County, 810 Lyttleton St., Camden. **Nov. 4 - Dec. 2** - "The Equine Triumvirate". Hours: Mon.-Fri., noon-6pm. Contact: Kristin Cobb at 803/425-7676, ext. 306 or at (www.fineartscenter.org).

Charleston

Throughout historic downtown Charleston. Nov. 2, 4-5, 2011 - "Thirteenth Charleston Fine Art Annual," Charleston's premier fine art weekend, hosted by the Charleston Fine Art Dealers' Association (CFADA). The fine art event features works from over one hundred nationally renowned artists, including paintings, sculptures, glass, mixed media, photography and jewelry. The highlights of the fine art weekend are art openings at CFADA member galleries, plein

air painting, reception and silent auction and lectures. Proceeds will benefit Charleston County High Schools' fine art programs. For more information on CFADA, please visit (www.cfada.com).

Double Tree Guest Suites, 181 Church Street, Charleston. **Nov. 5, at 7:15pm** - "6th Charleston Art Auction," presenting over one hundred important paintings, sculpture and vintage prints by living and deceased artists who are generally associated with the South. An illustrated catalogue is available for \$25.00 and the entire selection of lots can be viewed online at the auction website at (www.charlestonartauction.com). All works will be available for preview at the hotel from 10am to 7pm, Saturday, Nov. 5, 2011. Collectors who are unable to attend the sale in person should contact Charleston Art Auction to make arrangements for absentee and telephone bidding prior to 5pm on Friday, Nov. 4, 2011. Arrangements to attend may be made at 843/785-2318 or 843/722-2172 or through the website at (www.charlestonartauction.com).

Avery Research Center for African History and Culture, at the College of Charleston, 125 Bull St., Charleston. **Denmark Vesey Conference Room, Ongoing** - "KABOH: A Legacy of Twelve." Charleston Quilter Dorothy Montgomery made "KABOH" in honor of the "Priscilla" story. The quilt was in the possession of Dr. Joseph Opala who donated it to the Avery Research Center in July, 2008. **Corridor (2nd Floor), Ongoing** - "Esau Jenkins: A Retrospective View of the Man and His Times" This exhibition was developed in 1991 by the Avery Institute. After its display in Charleston it traveled throughout the state of SC under the auspices of the State Museum Traveling Exhibition Program. Consisting of (15) panels measuring 24" x 36", the exhibit chronicles the myriad of activities Mr. Jenkins was intimately involved in. Additionally, it highlights his leadership skills as a conscious and compassionate community activist, organizer, entrepreneur and Civil Rights leader. Hours: Mon.-Fri., 10am-5pm & Sat., noon-5pm. Admission: by donation. Contact: 843/953-7609 or visit (www.cofc.edu/avery).

Charleston Artist Guild Gallery, 160 East Bay St., Charleston. **Nov. 4 - 30** - "A Tale of Two Cities," featuring works in oil by Patricia Huff. Come and share her visual interpretations through oil medium and see with her eyes the play of light on buildings and reflected in water using the palette knife. **Ongoing** - Featuring an exhibit of works by over 73 plus members of CAG who display a wealth of talent in different media including, oils, acrylics, pastels, watercolors, photography, printmaking & sculpture. The Gallery is also home for the CAG office. Hours: Mon.-Sat., 11am-6pm. Contact: 843/722-2454 or at (www.charlestonartistguild.com).

City Gallery at Waterfront Park, 34 Prioleau Street, Charleston. **Upper & Lower Level Galleries, Nov. 5 - Dec. 31** - "SC Watermedia Society's 34th Annual Exhibition". A reception will be held on Nov. 5, from 5:30-7:30pm. The exhibit features original paintings from 62 award winning artists from across the state, consisting of watercolor, acrylic, colored pencil and any water-based media. This year's artwork will be curated by a panel at the City Gallery, and then 30 artists will win awards, which will be judged by Florida artist Mary Alice Braukman. Hours: Tue.-Fri., 10am-6pm and Sat. & Sun., noon-5pm during exhibits. Contact: Erin Glaze at 843/958-6484 or (<http://citygalleryatwaterfrontpark.com/>).



Blessed Are They That Mourn for They Shall Be Comforted, ca. 1988, by Virginia Fouché Bolton (American, 1929 - 2004). Oil on canvas, 43 x 37 inches. Gift of the artist in memory of her husband, Donald Gail Bolton "who knew that I was an artist before I did and encouraged me to do my best"

Gibbes Museum of Art, 135 Meeting Street, Charleston. **Main Gallery, Through Jan. 8, 2012** - "Breaking Down Barriers - 300 Years of Women in Art". Beginning with Henrietta Johnston, the first female professional artist in America, and continuing to the present, Breaking down Barriers examines the challenges faced by women artists

over the past 300 years. Drawn from the museum's permanent collection, the exhibition highlights a number of extraordinary women working in a variety of media and artistic styles. **Rotunda Galleries, Through Jan. 8, 2012** - "Camera Works - Masters in Photography". This exhibition features twentieth-century, masters of photography selected from the Gibbes permanent collection and local private collections including works by Alfred Stieglitz, Margaret Bourke White, Dorothea Lang, Alfred Eisenstaedt, Berenice Abbott, and many more. **First, Second and Third Floor Galleries, Ongoing** - "The Charleston Story". Drawn from the museum's permanent collection, this exhibition highlights significant people, places, and periods from Charleston's beginning as a British colony, through the American Revolution, the later ravages of the Civil War, and culminating today as a culturally diverse and dynamic community. **Ongoing** - "Hands On!" This exhibit features works of art selected from the Gibbes Museum of Art's touch collection. **Museum Shop** - Now offering the inventory of the Tradd Street Press, reproductions of works by Elizabeth O'Neill Verner among other exhibit related art objects. Hours: Tue.-Sat., 10am-5pm & Sun., 1-5pm; closed Mon. Admission: Yes. Contact: 843/722-2706 or at (www.gibbesmuseum.org).

Halsey Institute of Contemporary Art, The Marion and Wayland H. Cato Jr. Center for the Arts, College of Charleston School of the Arts, 161 Calhoun St., Charleston. **Through Dec. 9** - "Hamid Rahmanian - Multiverse," and "Tanja Softić - Migrant Universe". The exhibits features works by two artists, working through different media, presenting visualizations of their experience as immigrants. The "Multiverse" exhibition is an excerpt from the graphic novel "The Magnificent Book of M". An allegorical tale, the book intertwines reality, dream and fantasy to present to the reader a dissection of what it feels like to be an immigrant. The "Migrant Universe" series acts as a visual poem about identity and the worldview of an immigrant. Tanja Softić's prints, drawings, and paintings combine images of natural and man-made structures with drawings based on appropriated visual material: medical and botanical illustrations, maps and charts, manuscript illuminations, and comic art. Her work addresses concepts of cultural hybridity, chaos, and memory. Hours: Mon.-Sat., 11am-4pm. Contact: Mark Sloan at 843/953-4422 or at (www.halsey.cofc.edu).

Karpeles Manuscript Museum, 68 Spring Street, corner of Spring & Coming Streets, Charleston, in the former St. James Methodist Church, founded in 1797. **Ongoing** - Featuring historically important documents from our permanent Charleston collection. Recently added to the Permanent Collection - a special and unique exhibit of Egyptian Stone Carvings dating from 1492 BC. Free parking and free admission. Hours: Tue.-Sat., 11am-4pm. Closed on holidays. Contact: 843/853-4651.

Redux Contemporary Art Center, featuring Redux Studios, 136 St. Philip Street, Charleston. **Through Nov. 26** - "Picturesque Evacuation Ploy," featuring a large-scale site-specific installation by visiting artist Liz Miller. Miller is known for her mixed media drawings and large-scale installations. Her work has been featured in solo and group exhibitions throughout the United States and abroad. Hours: Tue.-Sat., noon-5pm. Contact: 843/722-0697 or at (www.reduxstudios.org).

The Charleston Museum, 360 Meeting Street, Charleston. Founded in 1773, is America's first museum. **Ongoing** - Featuring the most extensive collection of South Carolina cultural and scientific collections in the nation, it also owns two National Historic Landmark houses, the Heyward-Washington House (1772) and the Joseph Manigault House (1803), as well as the Dill Sanctuary, a 580-acre wildlife preserve. Admission: Yes. Hours: Mon.-Sat., 9am-5pm & Sun., 1-5pm. Contact: 843/722-2996 or at (www.charlestonmuseum.org).

ALTERNATE ART SPACES - Charleston **Ashley River Tower**, Public area at Medical University of South Carolina, Charleston. **Ongoing** - "Contemporary Carolina Collection @ Ashley River Tower," featuring the largest collection of original, contemporary South Carolina art on permanent display, including 885 works by 53 talented artists, sculptors and photographers in South Carolina. Artists included are: Lucille Akinjobe, Jack Alterman, Thomas Blagden, Jr., Carl Blair, Patti Brady, Keith Brown, Julia Cart, Eva Carter, Jocelyn Châteauneuf, Lese Corrigan, Townsend Davidson, Linda Fantuzzo, Buddy Folk, Squire Fox, Mary Edna Fraser, Cassandra Gillens, Anthony Green, Jon Holloway, Ann Hubbard, Lisa Salosaari Jasinski, Erik Johnson, Kim Keats, Arianne King Comer, Kit Loney, Paul Mardikian, Nancy Marshall, Paul Matheny, John McWilliams, Sue Middleton, Marge Moody, Gordon Nicholson, Jane Nodine, Marcelo Novo, Karin

continued on Page 42