

Furman University in Greenville, SC, Features Works by Francisco de Goya

Furman University in Greenville, SC, will present the exhibit, *Los Caprichos*, a series of etchings by renowned Spanish artist Francisco de Goya, on view in the Thompson Gallery in the Thomas Roe Art Building from Nov. 1 through Dec. 21, 2012. The exhibit marks the first time Furman's entire collection of "Los Caprichos" etchings has been on display.

"Los Caprichos is widely recognized as Goya's most important series of prints, particularly for its poignant social and political commentary," said Elizabeth Hamlett, Furman's university collections manager.

Goya (1746-1828) was a court painter to the Spanish Crown and a chronicler of history. The satirical "Los Caprichos," created between 1793 and 1798 and published in 1799, depict what Goya described as "the innumerable foibles and follies to be found in any civilized society, and from the common prejudices and deceitful practices which custom, ignorance, or self-interest have made usual."

"Los Caprichos," essentially a book with a moral message, focuses on four main themes: satirical comment on poor education and ignorance; condemnation of society's traditional vices; deceit in relationships between men and women; and protest against abuses of power, according to the Prado Museum in Madrid. The Prado is hosting the exhibit, *Goya's Drawings Restored*, on view through Jan. 20, 2013, a selection of 14 preparatory drawings in red chalk which Goya created for the Los Caprichos series.

Furman has 27 of the 80 "Los Caprichos" prints in its collection. A selection of those etchings went on display in Sept. 1996, after they were first given to the university by the late George and Gerda McCahan. Dr. Gerda McCahan, who served as a psychology professor at Furman for 28 years, was given the prints by her father who collected the various editions of prints during his trips to Europe.

Some have called Goya the father of



Work by Francisco de Goya modern art because of his bold, innovative technique and darkly satiric outlook that emerged after a serious illness in the 1790s left him deaf.

"His subject matter, technique and composition influenced Impressionist and Post-Impressionists such as Manet and Toulouse-Lautrec, and his tormented works led to the tortured paintings of the German Expressionists and even many of the current Neo-Expressionists and Post Modernists," Olof Sorensen, Professor of Art Emeritus, wrote in a Furman magazine article describing the "Los Caprichos" series.

"Furman is proud to have as part of its collection these works, which link us to our European past yet remain a source of artistic inspiration in our own day," Sorensen said.

The exhibit, sponsored by the Art Department and the Furman University Decorative Fine Arts Committee, is free and open to the public.

For further information check our SC Institutional Gallery listings or call 864/294-2074.

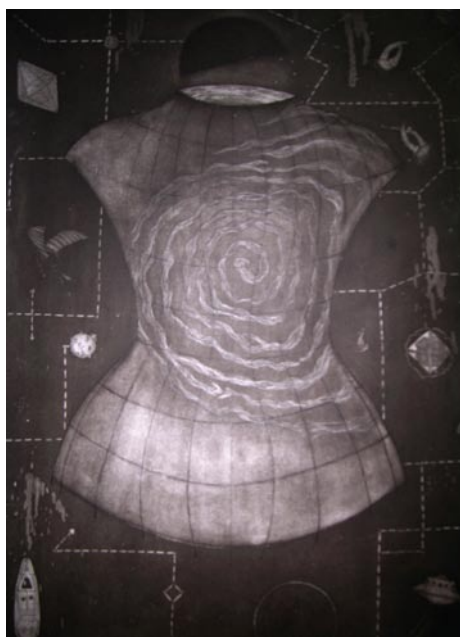
University of South Carolina Upstate in Spartanburg, SC, Offers Works by J. Catherine Bebout

Maps, in their many forms, are a central theme of J. Catherine Bebout's prints from her *Mapping the Body* series, to be exhibited at the Curtis R. Harley Gallery at the University of South Carolina Upstate in Spartanburg, SC, from Nov. 2 through Dec. 3, 2012. An artist's talk will be offered on Nov. 8, starting at 4:30pm with a reception to follow.

Using a layered incorporation of colonial maps, topographical charts and photographs taken on her travels to China, Australia and New Zealand, together with energy flow charts, tantric charts and acupuncture diagrams, Bebout's works examine how cartography has been used to both inform and distort our vision of the world. Prominent in her works is the form of a torso, used as a vessel for storytelling, and as a window or portal for travel and exploration into the hidden, mysterious interior landscape worlds located within the body.

Bebout uses multiple processes in her work, ranging from traditional etching to photo based and digital, to create hybrid works that attempt to recapture the essence or spirit of the 'Maya,' a Sanskrit term referring to the duality between illusion and dream as envisioned in his mind's eye. Her works are mixed media monoprints with etching, litho, silk aquatint and Chine-collé. The process involves scanned ephemera gathered from years of travel, along with maps, charts, drawings, and photographs.

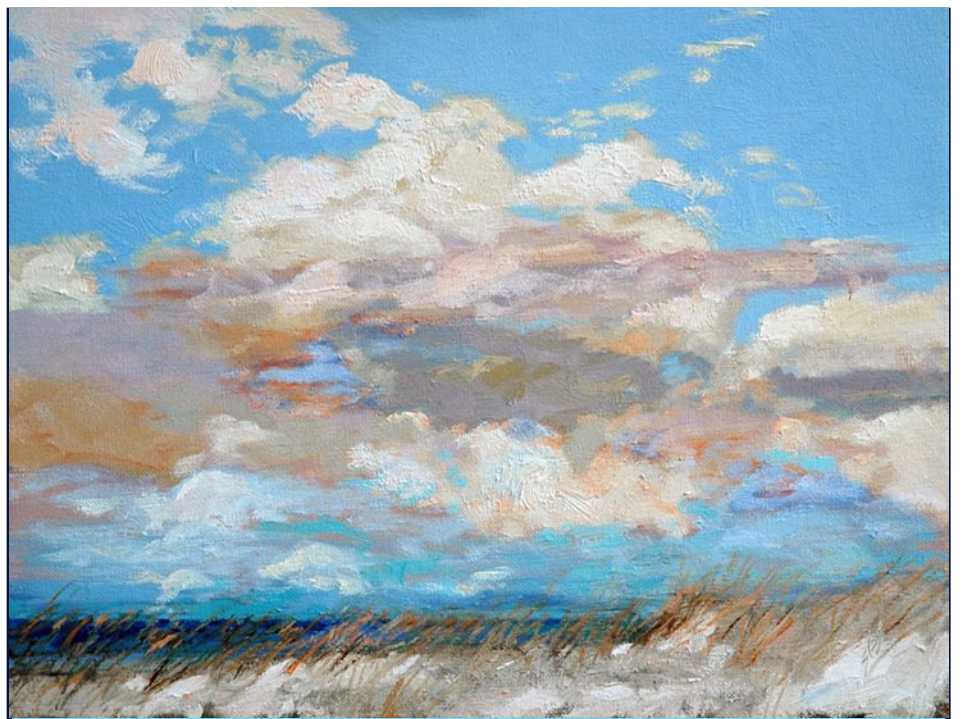
"Visually interleaving layers of the personal with the appropriated, I create unique impressions intended to move the viewer through space and time, in an ef-



Work by J. Catherine Bebout

fort to present countless associations from the mystical to the esoteric," said Bebout. "Over the years, my interest in the archeology of travel has taken me down many paths and like the early cartographers, I discovered this visual language to be an evocative means for conveying my perceptions of the world. Traveling throughout the exotic regions of both India and Asia, I became increasingly interested in Oriental and Ayurvedic traditions where illustrative maps are devotedly used to chart the flow of energy throughout the body. I also became fascinated visually by the tantric charts and acupuncture diagrams used to convey the 'chi' energy

continued above on next column to the right



Morning Sky Over Lake Michigan

11 x 14 inches

New Original Paintings on Exhibit

November 8 - 30, 2012

Reception: November 8, 6 - 8pm

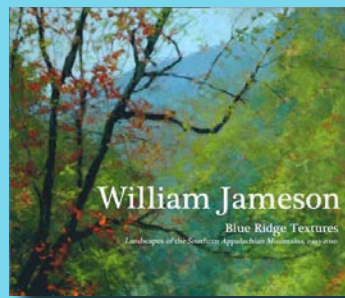
Shain Gallery • 2823 Selwyn Avenue • Charlotte, NC

Check back for upcoming 2013 Workshops!

My workshops are limited in size to 12 participants and early registration is encouraged. Beginners to advanced are welcome and materials lists, directions and schedules will be sent to all registrants. In keeping with today's economy I have changed the rates on some of my workshops.

Custom Workshops are also Offered for Your Organization, Specifically Designed for Your Location

Detailed info is available at www.williamjameson.com or by calling 828.749.3101.



"Blue Ridge Textures", William Jameson's Landscapes of the Southern Appalachian Mountains - 1993-2010, is now available in hardback and soft cover editions.

To purchase your personalized book visit www.williamjameson.com!

within the body, as well link our circadian rhythms with the universe."

For further information check our SC Institutional Gallery listings, contact

Michael Dickens, gallery manager, at 864/503-5848 or Jane Nodine, gallery director, at 864/503-5838.

Outsider Arts sc Presents 2012 Holiday Market and Fundraiser in Greenville, SC - Nov. 17, 2012

Outsider Arts sc, is pleased to announce the 2012 Holiday Market and Fundraiser for Meals on Wheels. Please join us on Saturday, Nov. 17, 2012, from 10am - 4pm followed by The Handlebar's (sometimes annual) Chili Cook-Off starting at 4pm, at The Handlebar, 304 E. Stone Ave., Greenville, SC.

The Market features established and up-and-coming local artists in an intimate setting. You'll find special one of a kind gifts for everyone on your list, from jewelry and clothing to pottery, woodworking, diverse wall art and more.

Performance artists TimTv, Our World Festival, Wasted Wine, Darby Wilcox and Zumba dancers will perform throughout the day.

Get your holiday shopping done early then round out your day by checking out The Handlebar's (sometimes annual) Chili Cook-Off that begins at 4 pm, where you can taste an assortment of offerings, have a brew and vote for your favorite for just \$10.

Admission to the Market is free but donations are encouraged to support Meals

on Wheels of Greenville. Cash donations of \$3 earn a ticket for a chance to win door prizes of artwork donated by participating artists. Donate \$10 and receive 5 tickets to increase your chances.

Meals on Wheels of Greenville delivers a nutritious, hot meal Monday through Friday to more than 1,380 homebound residents of Greenville County who have no means to prepare a nutritious meal for themselves and little or no support system to help them on a daily basis. Volunteers monitor the welfare of each client on their route and also help by delivering donated pet food twice a month to more than 250 clients.

Outsider Arts sc is a grassroots organization whose mission is to champion diverse art forms and foster community spirit. We'd like to thank The Handlebar, Palmetto Drum Co. and Community Tap for their continued support.

For further information check our SC Institutional Gallery listings or call Stephanie Gutzman at 864/569-4821 or Karen Dillingham at 864/414-0722.

Carolina Gallery in Spartanburg Offers Works by Robert LoGrippo & Eileen Blyth

Carolina Gallery in Spartanburg, SC, will present an exhibit of new works by Robert LoGrippo and Eileen Blyth, on view in the gallery's new location at 523 West Main Street, from Nov. 15 through

Dec. 31, 2012. A reception will be held on Nov. 15, from 6:30-9pm.

Eileen Blyth is a Columbia, SC, artist known for her paintings and assemblages

continued on Page 10