

SC Commercial Galleries

continued from Page 52

Charles Street Gallery, 914 Charles Street, @ Charles & Greene Street, Beaufort. **Ongoing** - Located in a lovingly restored building, we offer custom framing and handcrafted furniture, and feature exhibits by local artists. Hours: Mon.-Fri., 10am-6pm & Sat., 10am-3pm. Contact: 843/521-9054 or at (www.thecharlesstreetgallery.com).

I. Pinckney Simons Gallery, LLC, 711 Bay Street, historic downtown Beaufort. **Ongoing** - Featuring fine artists of the South since 1979; paintings, sculpture, jewelry, and mosaic masks. Hours: Tue.-Fri., 11am-4:30pm, & Sat., 11am-3pm. Contact: 843/379-4774 or at (www.ipsgallery.com).

Indigo Gallery, 809 Bay St., Beaufort. **Ongoing** - Featuring a gallery of fine art, including a unique selection of paintings by local and regional artists. Represented are: Sandra Baggett, Alison Crossman, Gloria Dalvini, Janet Mozley, and Polly Swenson. Also: Peter Pettegrew, Kelley Sanford & Liz Reitz. Fine custom framing is also available. Hours: Mon.-Sat., 10am-5pm. Contact: Janet Deaton 843/524-1036.

Longo Gallery, 103 Charles Street, Beaufort. **Ongoing** - Featuring new works including paintings, collages and constructions by Eric Longo & sculptures by Suzanne Longo. Hours: Mon.-Sat., 10am-5pm. Contact: 843/522-8933.

Ly Bensons Gallery & Studio, 211 Charles Street, Beaufort. **Ongoing** - Featuring the exhibits, "The Gullah/African Link" and "Out of Africa," featuring rare Shona Verdite sculptures by various artists from Zimbabwe, Africa, and original photographs by Gullah photographer and gallery owner Rev. Kenneth F. Hodges. Also, an array of antiques, batiks, and artworks for the discerning collector. Hours: Mon.-Sat., 10am-5:30pm. Contact: 843/525-9006 or at (www.lybensons.com).

Rhett Gallery, 901 Bay St., Beaufort. **Ongoing** - Featuring prints and paintings of the Lowcountry by four generations of artists, wildfowl carvings by William Means Rhett, antique prints & maps, Audubons, and Civil war material. Hours: Mon.-Sat., 9am-5:30pm; Sun. 11am-2pm. Contact: 843/524-3339 or at (www.rhettgallery.com).

The Craftseller, 818 Bay St., Beaufort. **Ongoing** - Featuring unique works by American artists in pottery, jewelry, metal, glass, textiles, wood, painting and kaleidoscopes. Hours: Mon.-Sat., 10am-6pm and Sun., noon-4pm. Contact: 843/525-6104 or at (www.craftseller.com).

Belton

Carlene Shuler Brown Gallery, 3605 Old Williamston Road, Belton. **Ongoing** - Original watercolor paintings and prints by Carlene Shuler Brown. Also acrylic collages and paper collages using stained papers, oriental papers and lace papers by Carlene Shuler Brown. Commissioned paintings and drawing classes are offered. Custom framing is offered also. Hours: Mon.-Fri., 10am-5pm or by appt. Contact: 864/225-3922.

Bluffton

Four Corners Art Gallery and Fine Framing, 1263 May River Rd., Historic District, Bluffton. **Nov. 15 - Dec. 10** - "New Works by Martha Worthy and Louanne La Roche". A reception will be held on Nov. 15, from 4-7pm. **Ongoing** - Featuring works by 12 artists with an especially local flavor. The works are in acrylic, oil, mixed media, pen and ink, pottery and wire sculpture. A real treat. We have a fine collection of custom picture frame mouldings and an experienced staff to work with anything from the unusual to the museum treated piece. Hours: Mon.-Fri., 10am-5:30pm & Sat., 11am-2pm. Contact: 843/757-8185.

Maye River Gallery, 37 Calhoun St., Bluffton. **Ongoing** - Featuring works by: Anne Hakala, Barb Snow, Bobsy Simes, Carrol Kay, Diane Dean, Kelly Davidson, Donna Ireton, Jo dye, Joyce Nagel, Cora Rupp, Laura Silberman, Kathy Tortorella, Judy Saylor McElynn, Marci Tressel, Susan Knight, Vickie Ebbers, Julie Yeager. Hours: Mon.-Sat., 10am-5pm. Contact: 843/757-2633 or at (<http://www.mayerivergallery.com/>).

Pluff Mudd Art, 27 Calhoun St., Bluffton. **Ongoing** - Featuring works by Terry Brennan, Bob Berman, Peggy Carvell, Laura Cody, Diane Dean, Cheryl Eppolito, Ed Funk, David Knowlton, Marilyn McDonald, Daurus Niles, Linda Patalive, Jim Renauer, Patti Seldes, Michael Smalls, Ellen Blair Rogers, Steve White, Pat

Wilcox, Caroll Williams and Irene K. Williamson. Hours: Mon.-Sat., 10am-5pm. Contact: 843/757-5590.

Preston Pottery Studio, 10 Church Street, Bluffton. **Ongoing** - Featuring above average pottery since 1973 by Jacob Preston. Hours: Tue.-Sat., 10am-5pm. Contact: 843/757-3084.

Camden

Dovetails, 645 Rutledge Street, Camden. **Ongoing** - Featuring custom bench crafted furniture by Jim Rose. Each piece is made by hand to the client's specifications. Jim works in a variety of woods including heart pine, walnut, cypress, maple, and cherry. Jim also works in exotic woods from South America and Africa. Visitors can watch individual pieces of furniture being built. Every piece has its own personality and becomes an instant heirloom. Hours: Mon.-Sat., 10am-5pm or by appt. Contact: 770/330-5000 or 803/446-3124.



Work by Susan Luke

Rutledge Street Gallery, 508 Rutledge St., Camden. **Ongoing** - Featuring original works of art from regional and national artists including Clara Blalock, Elizabeth Barber, Anne Bivens, Yong Chu Chang, Marjorie Greene, Joyce Hall, Seth Haverkamp, Carrie Payne, John Pototschnik, Bob Ransley, Dennis Snell, Maci Scheuer, and many more. Chinese Antique Furniture Pieces. Hours: Tue.-Sat., 11am-5pm. Contact: 803/425-0071 or at (www.rutledgestreetgallery.com).

The Artists' Attic, 930 S. Broad St., look for the maroon striped awning, Camden. **Ongoing** - Featuring a cooperative open studio and gallery shared by nine professional artists working in various mediums, including Lynn Wilson, Dot Goodwin, Ginny Caraco, Margaret Bass, Libby Bussinah, Ann Starnes, Karen White, Midge Bremer, and Lea McMillan. Commissions are accepted, and art classes are offered after school & privately. Hours: Mon.-Fri., 10am-4pm & most Sat., 10am-2pm or by appt. Contact: 803/432-9955 or e-mail at (LibbyB@bellsouth.net).

Charleston

Broad Street, Charleston. Nov. 1, 5-7pm - "First Fridays on Broad," featuring an artwalk with the following galleries: Ellis-Nicholson Gallery, Edward Dare Gallery, COCO VIVO, Mary Martin Fine Art, Spencer Galleries, M Gallery of Fine Art, Ella Walton Richardson Fine Art, and Martin Gallery. Contact: Stephanie Hamlet at 843/722-1944 or Jeannette Nicholson at 843/722-5353 or at (<http://www.charlestongalleryrow.com/>).

Throughout historic downtown Charleston. Nov. 1 - 2, 2013 - "15th Charleston Fine Art Annual, Charleston, SC's premier fine art weekend that brings hundreds of art enthusiasts to the historic district. Annually hosted by the Charleston Fine Art Dealers' Association (CFADA), the fine art event features works from over one hundred nationally renowned artists, including paintings, sculptures, glass, mixed media, photography and jewelry. The highlights of the fine art weekend are art openings at CFADA member galleries, (Nov. 1, from 5-8pm) plein air painting in Washington Park (Nov. 2, from 9am-noon). Proceeds will benefit Charleston County High Schools' fine art programs. Contact: visit (www.cfada.com).

Throughout Charleston, Nov. 2-7 - "Plein Air Painters of the Southeast Gathering," featuring nationally and internationally known artists will gather to paint en masse in Charleston. The plein air movement, which has accelerated over the last decade, brings artists from all over the country to one location where they paint together. The camaraderie and formation of lifelong friendships among creative people are fostered through this national plein air movement. From **Nov. 8 - 16** - Presenting a wet paint show featuring works by members of the Plein Air Painters of the Southeast's (PAP-SE) created while in Charleston, at COCO VIVO Art for Living, Edward Dare Gallery and Galerie on

Broad. A reception will be held on Nov. 8, from 6-8pm. For further info call Danny Laran at 843/720-4027.

Anglin-Smith Fine Art, 9 Queen Street, corner of Queen & State Streets, Charleston. **Nov. 1 - 15** - "Surrounded by Water," featuring works by Darrell Davis, Colin Page, Betty Anglin Smith, Jennifer Smith Rogers, Tripp Smith, Shannon Smith Hughes, Susan Mayfield, and Tripp Smith. A reception will be held on Nov. 1, from 5:30-8:30pm, as part of the CFADA's Charleston Fine Art Annual. **Ongoing** - Featuring original works by Betty Anglin Smith, Jennifer Smith Rogers, Tripp Smith, Shannon Smith Hughes, Kim English, Darrell Davis, Colin Page, Carl Plansky, and Victor Chiarizia. Hours: Mon.-Sat., 10am-5pm & Sun. 1-5pm. Contact: 843/853-0708 or at (www.anglinsmith.com).

Ann Long Fine Art, 54 Broad Street, Charleston. **Ongoing** - Classical Realism - still life, figurative work, landscapes and sculpture. The work represented by the gallery spans two generations of contemporary artists trained, in the most prestigious ateliers in Florence, Italy, to use the classical, realist techniques of European Old Master artists: oil paintings and drawings by Ben Long, as well as his studies for fresco; including Charleston artist Jill Hooper's still lifes and recent figure work; and many works by teachers of the Florence Academy, including its founder Daniel Graves. Also, represented are the figurative monotypes from the estate of deceased German Modernist Otto Neumann (1895 - 1975). Hours: Tue.-Sat., 11-5pm and by appt. Contact: 843/577-0447 or at (www.annlongfineart.com).

Artizom Framing & Gallery, 334 E. Bay Street, Suite J, Charleston. **Ongoing** - Featuring the contemporary artwork of Jackie and Charles Ailstock. Hours: Mon.-Fri., 10am-6pm or by appt. Contact: 843/723-3726 or at (www.artizom.com).

Atelier Gallery Charleston, 153 King Street, Charleston. **Ongoing** - The gallery's focus is to support and promote a variety of artists, from the Southeastern region, while merging the classics with the moderns. Traditional portraits and landscapes are displayed alongside contemporary canvases and sculptures. Hours: Mon.-Sat., 10am-6pm. Contact: 843/722-5668 or at (www.theateliergalleries.com).

Atrium Art Gallery, 61 Queen Street, Charleston. **Through Nov. 30** - "Ports and Passages," featuring paintings which capture moments from sailing adventures, from travels and from the fascination with those whose lives depend on the sea by Alana M. Knuff. Life is a passage taking us from port to port. Traveling with a spirit of adventure has opened many possibilities and treasured memories for me. Hours: Mon.-Sat., 10am-5pm. Contact: 843/973-3300 or at (www.atriumartgallery.com).

Bird's I View Gallery, 119-A Church St., Charleston. **Ongoing** - Featuring originals and prints of bird life by Anne Worsham Richardson, as well as works by Nancy Rushing, Alice Grimsley, and Detta Cutting Zimmerman. Hours: Mon.-Sat., 10am-5pm. Contact 843/723-1276, 843/766-2108 or at (www.anneworshamrichardson.com).

Blue Heron Glass, 1714 Old Towne Rd., Northbridge Shopping Center near T-Bonz Steak House, Charleston. **Ongoing** - Whether by commissioning an exquisite stained glass panel for home or office, stocking up on hard-to-find supplies for the glass artist, or selecting the perfect gift, Blue Heron Glass is truly a place where light and color blend through imagination. We offer a wide variety of classes. Hours: Tue.-Fri., 10am-6pm, & Sat., 10am-3pm. Contact: 843/769/7299, or at (www.blueheron-glass.com).

Carolina Clay Gallery, Freshfields Village, 565 Freshfields Dr., located at the intersection of Seabrook and Kiawah Islands, 15 miles south of Charleston, Johns Island. **Ongoing** - Carolina Clay Gallery features the work of over 100 North and South Carolina potters and glass artists. Also available are the wonderful, whimsical life size copper frogs of Charles and Zan Smith. Hours: Mon.-Sat. 10am-8pm, & Sun., 11am-6pm. Contact: 843/243-0043 or at (www.carolinaclaygallery.com).

Carolina Antique Maps and Prints LLC, 91 Church St., Charleston. **Ongoing** - Featuring Antique Maps and Prints from the 16th to the 19th century. Hours: Tue.-Sat., 11am-5pm or by appt. Contact: 843/722-4773 or at (www.carolinaantiqueprints.com).

Charleston Center for Photography, 654 King Street, Suite D, Charleston. **Through Nov. 7** - Featuring an exhibit of works by Leigh Webber. **Ongoing** - The Charleston Center for Photography (CCP) is a resource center and community for photographic enthusiasts and professionals. We're an education center, rental studio, professional printer and gallery under one roof. Our goal is to share information and

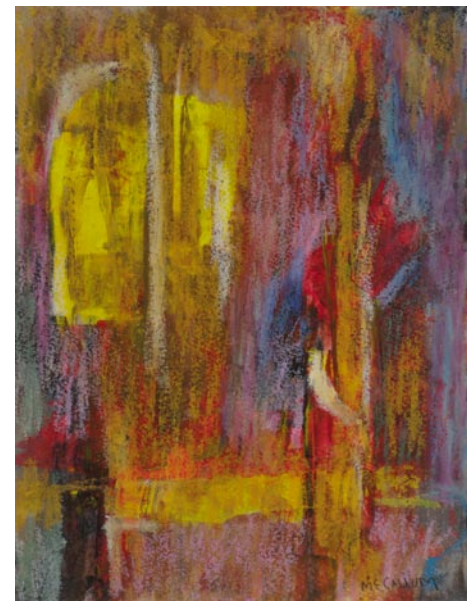
expertise in an open atmosphere where photographers can nurture and further their talents. Hours: Tue.-Fri., 9am-5pm. Contact: 843/720-3105 or at (<http://ccforp.org/>).

Charleston Crafts, 161 Church Street, across from Tommy Condon's, one block south of Market St., Charleston. **Ongoing** - Charleston Crafts is the longest operating craft cooperative in Charleston, featuring only items designed and created by SC artists. Gallery showcases a blend of contemporary and traditional craft media plus photography. Hours: Sun.-Thur., 10am-6pm & Fri.-Sat., 10am-8pm. Contact: 843/723-2938 or at (www.CharlestonCrafts.org).

COCO VIVO interior and fine art for relaxed living, Gallery Row, 25 Broad St., Charleston. **Nov. 8 - 16** - Presenting a wet paint show featuring works by members of the Plein Air Painters of the Southeast's (PAP-SE) created while in Charleston, in conjunction with Edward Dare Gallery and Galerie on Broad. A reception will be held on Nov. 8, from 6-8pm. **Ongoing** - Featuring works by Tony van Hasselt, aws, Mitch Billis, Patricia Roth and Roger Milinowski. Also representing jewelry designer Betty Holland and photographer Sandy Logan. Hours: Mon.-Sat., 9:30am-5:30 & Fri. till 8pm. Contact: 843/720-4027.

Coleman Fine Art, 79 Church St., Charleston. **Ongoing** - Both a fine art gallery, and a gold leaf studio, Coleman Fine Art has been representing regional and national artists for over 30 years. The Coleman studio produces the finest handcrafted gilt frames, and offers gilding restoration. The gallery specializes in Contemporary American paintings of both the American Impressionist and Realist schools. We proudly represent watercolor painter Mary Whyte, whose paintings focus on the life and culture of the indigenous people of the South Carolina Lowcountry. Currently we represent some of the country's leading plein-air painters, John Cosby, Gil Dellinger, Marc R. Hanson, Kevin Macpherson, Gregory Packard, George Strickland, and Mary Whyte. Hours: Mon., 10am-4pm; Tue.-Sat., 10am-6pm or by appt. Contact: 843/853-7000 or at (www.colemanfineart.com).

Cone 10 Studios, 1080-B Morrison Drive, in the heart of NoMo, Charleston. **Ongoing** - A studio and gallery of local potters and sculptors. We also offer classes in beginning to intermediate wheel throwing and clay sculpture. Hours: Mon.-Sat., 11am-5pm & Sun., 1-5pm. Contact: 843/853-3345 or at (www.cone10studios.com).



Work by Corrie McCallum

Corrigan Gallery, 62 Queen Street, Charleston. **Nov. 1 - 30** - "McCallum and Halsey," featuring works by Corrie McCallum and Louise Halsey. A reception will be held on Nov. 1, from 5-8pm, as part of the Charleston Fine Art Dealers' Association Fine Art Annual. Corrie McCallum's and her daughter Louise Halsey will have works paired and displayed at the gallery. McCallum passed away in 2009 leaving behind works spanning many years. Halsey works with fibers as a tapestry artist and is selecting from her mother's creations those that work well with her own. **Ongoing** - Contemporary fine art including paintings, photography, prints and sculpture. Now showing works by Manning Williams, Richard Hagerty, Joe Walters, Sue Simons Wallace, Gordon Nicholson, John Moore, William Meisburger, Mary Walker, Kristi Ryba, Paul Mardikian, Kevin Bruce Parent and Judy Cox. Located in the heart of the downtown historic district of Charleston's French Quarter. Artist at work on location - work in progress to be viewed. Hours: Mon.-Sat., 10am-5pm or by chance & appt. Contact: 843/722-9868 or at (www.corrigan-gallery.com).

Courtyard Art Gallery, 149 1/2 East Bay Street, Charleston. **Ongoing** - Featuring works by Veronique Aniel, Melissa Breeland, Mary Ann Bridgman, Renee Bruce, Beverly Brunswig, Wilma Cantey, Carole Carberry, Linda Churchill, Christine Crosby, Judy Jacobs, Alix Kassing, Jen-

continued on Page 54