

SC Commercial Galleries

continued from Page 54

Rhett Thurman Studio, 241 King St., Charleston. **Ongoing** - Featuring original works by Rhett Thurman in conjunction with The Sylvan Gallery. Hours: by appt. only. Contact: 843/577-6066.

Robert Lange Studios, 2 Queen St., Charleston. **Ongoing** - Featuring works by Ali Cavanaugh, Megan Aline, Robert Lange, Nathan Durfee, Kerry Brooks, Jessica Dunegan, Fred Jamar, Michael Moran, Amy Lind, Adam Hall, Joshua Flint, Sean Clancy, and JB Boyd. Hours: Mon.-Sun., 11am-7pm. Contact: 843/805-8052 or at (www.robertlanguestudios.com).

Spencer Art Gallery I, 55 Broad St., in historic French Quarter District, Charleston. **Ongoing** - Offering the works of over 35 award winning artists in a delightfully eclectic mix of subject matter, styles, and media. Hours: Mon.-Sat., 10am-5pm. Contact: 843/722-6854 or at (www.spencerartgallery.com).

Spencer Art Gallery II, 57 Broad St., in historic French Quarter District, Charleston. **Ongoing** - Offering the works of over 35 award winning artists in a delightfully eclectic mix of subject matter, styles, and media. Hours: Mon.-Sat., 10am-5pm. Contact: 843/723-4482 or at (www.spencerartgallery.com).

Studio 151 Fine Art Gallery, 175 Church St., just south of the corner of Market and Church St., Charleston. **Ongoing** - Featuring original art in traditional, realism, wildlife, impressionism collage, and abstracts in a variety of mediums, including photography and hand crafted jewelry. Offering the works of Colleen Wiessmann, Rosie Phillips, Shelby Parbel, Bob Graham, Amelia Whaley, Ron Chamberlain, Dixie Dugan, Nancy Davidson, Sandra Scott, Jennifer Koach, Michel McNinch, Amelia Rose Smith, Lissa Block, Debra Paysinger, Karen DeLoach, Diane Echlin, Daryl Knox, Gina Brown and Madison Latimer. We also participate in Charleston's historic French Quarter art walks. Hours: Mon.-Thur., 10am-6pm, Fri. & Sat., 10am-8pm; and Sun., 11am-5pm. Contact: 843/579-9725 or at (www.studio151finearts.com).

THALO-Working Studio Gallery, LLC, 7 Broad Street, Charleston. **Ongoing** - Featuring works by Christine Crosby and Katherine DuTremble in their working studio. DuTremble is also a print-maker and brings her knowledge and expertise in the making of monotypes to the public's view. They also have the late glassmaker Herman Leonhardt's work on exhibit and available for sale. Hours: Mon.-Sat., 10am-5pm. Contact: 843/327-5926 or at (www.thalostudio.com).

The Audubon Gallery, 190 King St., Charleston. **Ongoing** - "Charleston's only gallery for the Natural History and sporting art enthusiast!" Locally owned, the gallery specializes in the golden age of natural history (1700-1900), emphasizing John James Audubon, one of Charleston's most highly regarded artist. Here, you will find a tour-de-force of Audubon's "Birds of America" as well as other highly acclaimed natural history art. A sportman's paradise with a large selection of antique wildfowl decoys, collectibles, nostalgic paintings, prints of days afield and favorite hunting dogs. We offer museum-quality framing and conservation services for works of art on paper to protect and present your most treasured pieces. Hours: Mon.-Sat., 10am-5pm or by appt. Contact: 843/853-1100 or at (www.audubonart.com).

The Brizard Studio, one King Street, Suite 404, Charleston. **Ongoing** - Original fine oil paintings by Robin Brizard, award-winning impressionist artist. Hours: by appt. only, call 843/577-0964.

The Charleston Renaissance Gallery, 103 Church Street, at St. Michael's Alley, Charleston. **Ongoing** - Showcasing nineteenth century oil paintings, works on paper and sculpture of the American South. Hours: Mon.-Sat., 10am-5pm. Contact: 843/723-0025 or at (www.fineartsouth.com).

The George Gallery, 50 Bogard Street, Charleston. **Ongoing** - Currently representing Gary Grier, Amanda Norman, Paul Yanko, Alan Taylor Jeffries and Evan Armstrong, the gallery presents a feast for the eyes with art that is thought provoking and visual stimulating. In addition to sales, we offer consulting and professional installation services. We are here to make your art collecting experience simple and enjoyable. Hours: Tue.-Sat., 10am-5pm. Contact: 843/579-7328 or at (www.georgegalleryart.com).

The John Carroll Doyle Art Gallery, 125 Church St., Charleston. **Ongoing** - Featuring works by John Carroll Doyle and Margret Peterson. Hours: Tue.-Sat., 10am-5pm. Contact: 843/577-7344 or at (www.johncdoyle.com).

The John M. Dunnan Gallery, 121 Church Street, Charleston. **Ongoing** - Featuring works by John M. Dunnan. Including stylistic gesture drawings, paintings and sculpture. Hours: Mon.-Sat., 10am-5pm. Contact: 843/720-7425 or at (www.johndunnan.com).

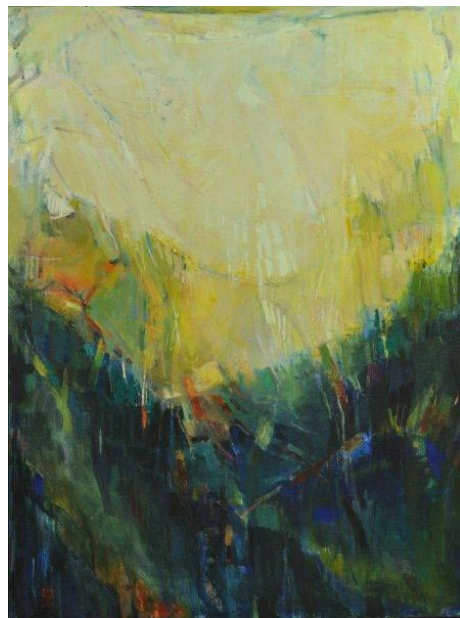
The Silver Puffin, 329 King Street, across from Bob Ellis Shoes, Charleston. **Ongoing** - Featuring unique American and International arts and crafts with emphasis on the work of local artisans. Hours: daily, 10am-6pm. Contact: 843/723-7900 or at (www.silverpuffin.com).

The Sylvan Gallery, 171 King Street, Charleston. **Ongoing** - Featuring 20th & 21st Century traditional and representational paintings and sculpture. Featuring works by: Cyrus Afsary, Carolyn Anderson, William "Bill" Berra, Scott Burdick, Nancy Bush, Frank DiVita, Glenna Goodacre, John Austin Hanna, Doug Higgins, William Kalwick, Ramon Kelley, Linda Kyser-Smith, Kent Lemon, Huihan Liu, Sue Lyon, Karol Mack, Eric Michaels, Anthony Palliser, Kate Palmer, Joan Potter, W. Stanley "Sandy" Proctor, Paul Strisik, Sonya Terpening, Barry Thomas, Rhett Thurman, Curt Walters, and Wayne E. Wolfe. Hours: Mon.-Fri., 9am-5pm; Sat., 10am-5pm; & Sun., 11am-4pm. Contact: 843/722-2172 or at (www.thesylvangallery.com).



Work by Karen Larson Turner

Wells Gallery at The Sanctuary, at The Sanctuary on Kiawah Island, about 30 minutes from Charleston, in Kiawah's newest and most luxurious resort. **Nov. 1 - 30** - Featuring an exhibit of works by Karen Larson Turner, Glenn Harrington, and George Pate. On Nov. 7-9, Karen Larson Turner will be in attendance, painting in the gallery, and around The Sanctuary Resort (event is open to the public at no charge). **Ongoing** - Featuring a selection of paintings, jewelry and sculptures of some of the Lowcountry's finest artists, Betty Anglin Smith, Shannon Smith, Jennifer Smith Rogers, George Pate, Glenn Harrington, Gary Gowans, Karen Larson Turner, Kim English, Felice Kilian, Grainger McKoy and Darrell Davis. Hours: Mon.-Sat., 10am-8pm & Sun., 10am-6pm. Contact: 843/576-1290 or at (www.wellsgallery.com).



Work by Laura Liberatore Szweda

ALTERNATE ART SPACES - Charleston **The Real Estate Studio**, 214 King Street, Charleston. **Through Nov. 5** - "Reflections and Gestures," featuring works by Hampton Olfus and Hank Herring. **Nov. 6 - Dec. 17** - "Landscape Abstractions," featuring an exhibit of works by Laura Liberatore Szweda. A reception will be held on Nov. 15, from 5-8pm. In 1997, Szweda moved from Baltimore, MD, to the Lowcountry of South Carolina. This move would have a transformative influence on her painting. Although Szweda has had a traditional art education, she has always maintained an interest in abstraction as the primary expression of her work. Hours: Mon.-Sat., 9am-5pm & Sun., noon-5pm. Contact: 843/722-5618.

Columbia Area

Congaree Vista area of Columbia. Nov. 21, 2013, from 5pm- 2am - "28th Annual Vista Lights Celebration". The Vista's signature open house kicks off the holiday season with a night of culture, cuisine and artistic performances. More than 60 galleries, shops, restaurants, bars and entertainment venues will open their doors for the evening to showcase holiday treasures, followed by the annual tree lighting ceremony at 7pm, with Mayor Steve Benjamin. To learn more about the Vista Guild, call 803/269-5964 or at (www.VistaLightsSC.com).

Main Street, downtown Columbia. Nov. 7, 6-9pm - "First Thursday on Main". This monthly event held on the 1st Thursday of the month features art presentation - up and down Main Street. Some of the participants include: S&S Art Supply, Tapp's Arts Center, Columbia Museum of Art, Anastasia & Friends Art Gallery, Frame of Mind, Artists in the Arcade, and more. For further information contact Mark Plessinger of Frame of Mind at 803/988-1065, e-mail at (frameofmind@sc.rr.com) or Lorri-Ann Carter of CarterTodd & Associates at 803/779-4005, e-mail at (la@cartertodd.com).

Alicia Leeke Fine Art Studio, 3821 Edinburg Rd., Columbia. **Ongoing** - Featuring original acrylic cityscapes, abstracts, monotypes, and drawings on canvas and fiber. Giclee's on canvas and paper also available. Hours: by appt. only. Contact: 803/429-5456 or at (www.alicialeeke.com).

ArtCan Studio & Gallery, 108 Beaufort Street, Chapin. **Ongoing** - Featuring original paintings, handpainted furnishing, and limited and open edition lithographs by Judy Bolton Jarrett. Hours: Thur. & Fri., noon-5:30pm; Sat., noon-4pm or by appt. (call before coming). Contact: 803/345-6588 or at (www.judyjarrettgallery.com).

ART + CAYCE Gallery, 1329 State St., opposite Brookland Cayce High School, Cayce. **Ongoing** - Our gallery hosts local artists from South Carolina showing works in various media. Every show is different and unique and displays work from abstract painting to mixed media assemblages. Currently we are displaying sculpture by Robin Jones and mixed media assemblage/painting by Andrew Norton Webber. One can expect to visit the gallery during the week and experience a calm atmosphere with engaging pieces. Hours: Mon.-Thur., 1-4pm; Sat., 1-4pm & by appt. Contact: 803/765-0838 or at (<http://artpluscayce.blogspot.com/>).

Art Studios in the Historic Arcade Building, 1332 Main Street, at the corner of Washington and Main Streets two blocks from the Statehouse, Columbia. **Ongoing** - Including works by Eileen Blyth (mixed media); Sylvia Potts and Richard Lund (sculptors); Page Morris, Beth West, Suzy Shealy, Walton Selig, Martha Thomas, Jan Swanson, Tish Lowe, Bettye Rivers, Debra Paysinger, Meredith Paysinger, McKenzie Seay and Leah Wimerly (painters). All studios on the main level have glass-fronts so that visitors can see art and the artists at work. Studio hours vary with each artist. Building hours: Mon.-Fri., 8am-6pm or by appt. Contact: Jan Swanson at 803/360-6794, e-mail to (busstop2711@aol.com) or on Facebook.

Artsy Fartsy Art Gallery and Coffee Bar, 906 Knox Abbott Drive, Cayce. **Ongoing** - Featuring art by local artists and cafe and wine bar. We also have MIND GRAVY which is our poetry night every wed 8-10pm. Hours: Wed.-Sat., 7pm-2am. Contact: 803/7084731 or e-mail at (Ladyartnsoul@gmail.com).

Bella Vista Art & Framing, 705 Gervais St., downstairs of City Market Antiques, Columbia. **Ongoing** - Featuring original works of art of varied national artists, regional artists, vintage art, antiquarian engravings and etchings, original photography. Also a Mort Kunstler dealer and large selection of SC artists, giclees, and limited edition prints. And, offering a full service custom framing shop featuring professional, quality framing at below industry prices. Hours: Tue.-Sat., 10am-5:30pm. Contact: 803/765-0808 or e-mail at (bellavistaart@bellsouth.net).

Carol Saunders Gallery, 922 Gervais St., Columbia. **Ongoing** - Featuring fine art objects and works by local artists, including Mana Hewitt, Stephen Chesley, Carol Pittman, Mike Williams, Laura Spong, Heidi Darr-Hope, Judy Hubbard, Jeri Burdick, Clay Burnett, and Eddie Bryan. Hours: M-F, 10am-5:30pm; Sat., 11am-5pm. Contact: 803/256-3046.

City Art, 1224 Lincoln Street, Columbia. **Through Nov. 16** - "Things," featuring works by Michael Cassidy. Cassidy comments, "Quite simply, this body of work is a about things that are important to me. The paintings are the result of a process of embracing where I came from, who I am, and who I want to be. I grew up around



Work by Bruce Nellsmith

people who take pride in hard work and self-sufficiency, have a strong bond with place and family and possess a deep passion for hunting and fishing. Many of these objects of utility and action were used or given to me by close family and friends. So, with the utmost of honesty and integrity I paint these objects, telling the story about the people and things that have made me." **Nov. 20 - Dec. 31** - "Formal Structures and Memories," featuring an exhibit of works by Bruce Nellsmith. A reception will be held on Nov. 21, from 5-9pm in conjunction with Columbia's Vista Lights celebration. Nellsmith comments, "The time I spend in France each year has an undeniable impact on my work. In years past, this impact was most often seen in the choice of motif or subject matter, however, this past spring, its influence was on the way that I see the motif. Spending time in the colorful and light drenched Mediterranean village of Collioure, I began to appreciate the impact that this little seaside town had on the work of Derain and Matisse. It was in this southern village that Fauvism was invented." **Ongoing** - Featuring works by Jane Aldridge, Jim Arendt, Randolph New Armstrong, Penny Baskin, Jo Dean Bauknight, Robbie Bell, Kimberly Betchman, Tarleton Blackwell, Angela Bradburn, Betty Bramlett, Joe Byrne, Carolita Cantrell, Kathy Casey, Anne Cunningham, Bob Doster, Gerard Erley, Claire Farrell, Amy Fichter, Tim Floyd, Michael Fowler, Teri Goddard, Harriet Goode, Vanessa Grubbs, Randy Hanna, Shelley Hehenberger, Mana Hewitt, David Kessler, Jan Kransberger, Robert Lyon, Rena MacQueen, Doug McAbee, Fred McElveen, Esther Melton, Max Miller, Lee A. Monts, Marge Loudon Moody, Blake Morgan, Bruce Nellsmith, Heather Noe, Susan Nuttall, Patrick Parise, Ann Hightower-Patterson, Leslie Pierce, Carol Pittman, Sylvia Ady-Potts, Alex Powers, Brian Rego, May Reisz, Tom Risser, Peggy Rivers, Cindy Saad, Sara Schneckloth, Ed Shmunes, Wanda Steppe, Nancy Thompson, Teri Tynes, Yisha Wang, Wendyth Wells, Sam Wilkins, Rod Wimer, and Katarina Zaric. This represents a rare opportunity to view a very wide range of acclaimed SC artists at one time. City Art features three distinct gallery spaces. A complete fine artists supply store is located on the lower level. Fine custom designer framing is available at City Art. In addition the Gallery is often host to a variety of events hosted by rental clients. City Art is a wonderful space to enjoy and purchase original art, art supplies, fine framing, take art classes and have wedding receptions, etc. Hours: Mon.-Thur., 10am-6pm; Fri., 10am-5pm, & Sat., 11am-3pm. Contact: 803/252-3613 or at (www.cityartonline.com).

Finleaf Gallery, 2323 Devine Street, Columbia. **Ongoing** - Featuring original artwork by local and regional artists, whose work has been hand-selected for display in our gallery. Hours: Tue.-Fri., 10am-5:30pm & Sat., 11am-3pm. Contact: 803/254-8327 or at (www.finleaf.com).

Fontenay Fine Art, Antiques and Oriental Rugs, 2716 Devine St., Columbia. **Ongoing** - Featuring antique and contemporary fine art in our gallery of fine rugs and antiques. We now offer full-service framing. Hours: Tue.-Fri., noon-5pm & Sat., 10am-6pm. Contact: 803/254-1352 or at (www.fontenayondevine.blogspot.com).

Frameland, 619 Harden St., (Five Points, next to Grouchos Deli), Columbia. **Ongoing** - Featuring local art in Five Points, close to downtown. USC and college art, diploma frames, Columbia and vintage SC prints. Hours: Mon.-Fri., 10am-5:30pm & Sat., 10am-3:30pm. Contact: 803/771-4451.

Havens Framemakers and Gallery, 1616 Gervais St., Columbia. **Ongoing** - Exhibiting paintings by local artists: Jamie Blackburn, Diane Gilbert, Betsy Havens, Rob Shaw, Steven Whetstone, James E. Calk and others. Featuring an extensive collection of handcrafted museum quality frames. Art and frame restoration. Hours: Mon.-Fri., 9:30am-6pm; Sat., 10am-5pm. Contact: 803/256-1616 or at (www.havensframemakersandgallery.com).

HoFP, 2828 Devine Street, Columbia. **Ongoing** - Featuring original works of art from around the world and around the corner. Hours: Mon.-Fri., 9am-5:30pm; Sat., 10am-5pm, & by appt.. Contact: 803/799-7405 or at (www.hofpgallery.com).

continued on Page 56