

# WELLS GALLERY



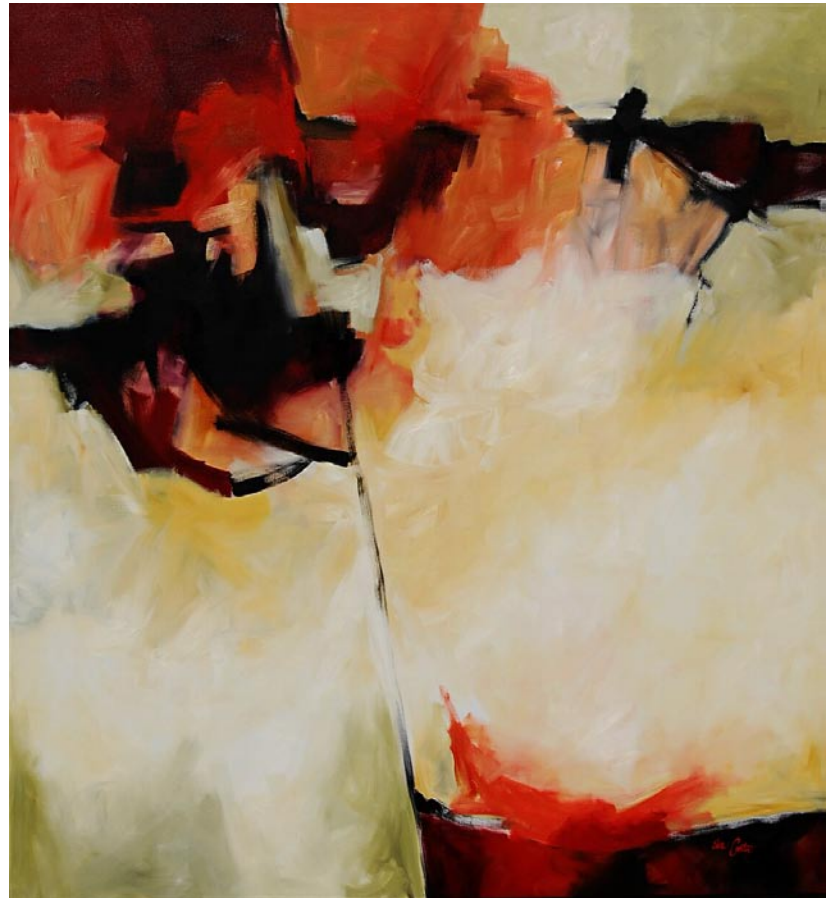
KAREN LARSON TURNER, *UNDER CERULEAN SKIES*, 30x24, OIL ON LINEN

## THE SANCTUARY AT KIAWAH ISLAND

1 SANCTUARY BEACH DR, KIAWAH, SC 29455

843.576.1290

WWW.WELLSGALLERY.COM



**Fracture**  
Oil on Canvas, 72 x 66 inches

## Eva Carter

**Studio**  
6696 Bears Bluff Road  
Wadmalaw Island, SC 29487

**By Appointment Only**  
Please call (843) 478-2522  
[www.EvaCarterGallery.com](http://www.EvaCarterGallery.com)

## Charleston Artist Guild

continued from Page 5

both the Lowcountry and the beautiful homes and gardens of Charleston. Mostly a landscape painter focusing on the marshes and beauty of the Lowcountry, Vardell was inspired to create this series after walking down the streets of Charleston, admiring the beautiful homes, window boxes, and ironwork gates with lovely gardens hidden behind.

Vardell has been painting for 14 years in the Delaware and Virginia areas, and just joined the Charleston Artist Guild last October. Although this is her first show in the Charleston area, Vardell's work has been shown in multiple Galleries in Virginia and Delaware and she has participated in many outdoor shows in her career. She also helped to found Great Falls School of Art in Virginia, and was a teacher there for many years.

Vardell states, "The process of painting for me is a journey - one that takes me out of my everyday world and absorbs me in entirety. Everywhere I look outside I see paintings! A fantastic sky, the light on a field, interesting shadow patterns or an idyllic reflection on water, these are what propel me to paint. It is my job as an artist to slow down, to observe, to look



Work by Mollie Vardell

harder, always searching for ways to bring this beauty to the surface of my paintings. I paint in oil because of the richness of the color, its density and its ability to add texture and depth to my paintings."

For further information check our SC Institutional Gallery listings or call Steve Jacobs, gallery manager at 843/722-2454.

Commonwealth University. Her works have been exhibited worldwide in solo and group shows. *The Way Out West: Desert Landscapes*, a monograph of her western landscapes was published in 2009 by the Center for American Places at Columbia College Chicago. She has been awarded a Virginia Museum Fellowship and a South Carolina Arts Commission Fellowship. Works are included in museum collections namely the San Fran-

continued above on next column to the right

cisco Museum of Modern Art, The High Museum, the Virginia Museum of Fine Art and the Portland Art Museum.

Van Parys's work is printed in traditional silver gelatin process - good old black and white for those of you who have not had the privilege of experiencing a darkroom. This series of Lowcountry images document the interruption of the local landscape by either advances of man with things such as highway viaducts or plastic playground tubes left to ruin or a reproduction sculpture rising out of a garden pond. The juxtaposition of the manmade with nature is obvious yet one has to look closely sometimes to see the "interruption" as we instinctually block it out. Van Parys points out these encroachments on nature with a fine and steady hand. This body of work is an extension of or rather the eastern response to her desert landscape series.

The Corrigan Gallery presents art with presence and a future instilled with intellect. Working since 1988 in the Charleston art market and a lifetime of Charleston art experience, the gallery opened 11 years ago providing a fresh alternative to the traditional southern art scene and providing an opportunity for showing to those



Work by Michelle van Parys

whose work is outside the norm. The gallery handles works from the estate of Elizabeth O'Neill Verner and that of other earlier Charleston artists as well as the local contemporaries. Located in the heart of the historic district, the gallery combines the charm of the old city of Charleston with a look to the future. Paintings, etchings, woodcuts, monotypes, collages, photographs, and sculpture are shown and available to the discriminating collector.

For further information check our SC Commercial Gallery listings, call the gallery at 843/722-9868 or visit ([www.corrigan-gallery.com](http://www.corrigan-gallery.com)).

## Corrigan Gallery in Charleston, SC, Features Works by Michelle van Parys

Corrigan Gallery LLC in Charleston, SC, will present *Beyond the Plantations: Images of the New South*, featuring works by Michelle van Parys, on view from Nov. 2 - 30, 2016. A reception will be held on Nov. 4, from 5-8pm.

Photographer Michelle Van Parys is also a professor at the College of Charleston and directs the photography lab there. She received an undergraduate degree from the Corcoran School of Art in DC and a MFA in photography from Virginia

## Meyer Vogl Gallery in Charleston Offers Works by Anne Blair Brown

Meyer Vogl Gallery in Charleston, SC, will present *Inside and Out*, an exhibition featuring new works by award-winning Nashville impressionist Anne Blair Brown, on view from Nov. 10 - 25, 2016. A reception will be held on Nov. 10, from 5-8pm.

Brown, a plein air painter who loves painting on location and delights herself in the challenge of translating energy from the outside to a canvas. This is Brown's first solo exhibition in Charleston.

"My paintings reflect a sense of place," Brown says. "I try to evoke a sense of comfort and familiarity whether an interior, landscape, or street scene. I want



Work by Anne Blair Brown  
the viewer to feel connected regardless

continued on Page 8