

Theatre Art Galleries in High Point

continued from Page 11

Worm is a Signature Member of the NWS and WSNC. In addition to maintaining a studio she works part-time as the Collections Curator at the Hickory Museum of Art.

Stephen Brooks is a painter inspired by nature and the forests blanketing North Carolina. He is not interested in making his paintings look realistic and would rather his paintings be an expression of his visual ideas. He states that, "Traces of the space, light, textures and sounds I experience when walking through a forest are integrated into the work. If musicians and poets have "muses", then the forest plays that role when I work."

The cycles of growth, death, and decay are similar to the processes Brooks uses to create a work. He may build up and then break down a painting until he is satisfied with it. "The result is an image that defines a singular experience. For me, painting is where vision, thought and activity collide, imperfect, but candid in concept and execution."

The Hallway Gallery will feature *HEALING SEEKERS: A Photography Exhibit*. Healing Seekers is an educational resource whose primary focus is providing video content material and resources for school systems, educational venues, and the general public. The Healing Seekers Team explores off-the-beaten path locales such as the Amazon, Andes, Madagascar, and Papua New Guinea. Treks are extensively filmed, which allows for fascinating educational videos and webisodes to be created. These materials complement school curriculums and encompass realms such as biology, physiology, ecology, geography, social studies, and so on. The results of these explorations are fascinating stories of life, amazing discoveries of the interconnectedness of life and how medical treatments and therapies



Work by Kate Worm

arise from some of the most surprising places. This exhibit will feature a selection of stunning photographs from some of the most remote areas of the world.

The Kaleidoscope Gallery will host the *Annual Middle School Art Exhibition* featuring works of art by many of Guilford County's Middle school artists. Participating schools are High Point Christian Academy, Mendenhall Middle School, Penn Griffin School for the Arts, Southwest Middle School, Thomasville Middle School, Wesleyan Education Center, and Westchester Country Day School.

For further information check our NC Institutional Gallery listings, call TAG at 336/887-2137 or visit (www.tagart.org).

Artists League of the Sandhills in Aberdeen, NC, Features Works by League Instructors

The Artists League of the Sandhills in Aberdeen, NC, will present *See How It's Done*, featuring an exhibit of works by its 2014 art class instructors, on view in the Exchange Street Gallery of Fine Art, on view from Jan. 5 through Feb. 11, 2014.

There will be oil paintings by Harry Neely, Joan Williams, Diane Kraudelt, Courtney Herndon and Andrea Schmidt, and paintings by watercolor artists, Sandy Scott, Irene Dobson and KC Sorvari. Drawings by Sandra Kinnunen, Pat McMahon and Barbara Sickenberger, and pastel and colored pencil work by Betty Hendrix will be included. Collage work by Sandy Stratil and ink paintings by Pam Griner will also be featured.

Registration for 2014 classes is underway.

The Artists League located in Aberdeen is a nonprofit organization whose stated mission is "to promote interest in the visual arts by providing educational classes and workshops" to the general public. The building contains classrooms, 35 artist studios, a library and the Exchange Street Gallery of Fine Arts.

For further information check our



Work by KC Sorvari

NC Institutional Gallery listings, call the League at 910/944-3979, or visit (www.artistleague.org).

UNC-Greensboro in Greensboro, NC, Offers Works by Jiha Moon and Prints from the Dr. Lenoir C. Wright Collection

UNC-Greensboro in Greensboro, NC, will present two new exhibits including: *Foreign Love - Jiha Moon: Falk Visiting Artist*, on view in the The Louise D. and Herbert S. Falk, Sr. Gallery, at the Weatherspoon Art Museum, from Jan. 18 through Apr. 13, 2014, and *Bugs, Beasts and Blossoms: Japanese Woodblock Prints from the Dr. Lenoir C. Wright Collection*, on view in The Leah Louise B. Tannenbaum Gallery, from Jan. 11 through Apr. 13, 2014.

Known for combining traditional Asian landscape-painting techniques with American Modern and Pop art influences,

Jiha Moon's colorful compositions blur the lines between East and West to speak to the cultural pluralism of contemporary society. Composed with flowing, gestural brushstrokes, and an array of iconic references (emoticons, Lucky Cats, lotus blossoms, scrolls), her imaginative mash-ups offer an intense experience. Her exhibition at the Weatherspoon, *Foreign Love*, mixes multiple cultural references to play upon the idea of shifting identities and includes work on paper, ceramic sculptures, and a series of talisman-like works inspired by Korean

continued above on next column to the right

Discover the Seagrove Potteries

Seagrove is a Community of Working Potters & home to the North Carolina Pottery Center

You're invited....

to visit the Seagrove potters at their workshops & studios nestled in the countryside.

Experience a diversity of pottery from contemporary, one-of-a-kind art pottery, to traditional utilitarian forms, & folk art

It's an Adventure....

Pick up a free colored map at any of the pottery shops

Seagrove is located in the Center of North Carolina 40 miles south of Greensboro on Hwy. 220 (future I-73, I-74)

www.discoverseagrove.com

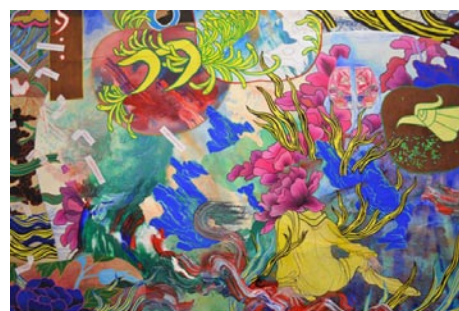
Eck McCannless Pottery

Demonstrations available anytime!

Eck is a second-generation Seagrove potter who has spent nearly 20 years perfecting his craft. He specializes in **Agateware, Crystalline and Stoneware.**

6077 Old US Hwy 220
Seagrove, NC 27341
(336) 873-7412

www.EckMcCannless.webs.com



Jiha Moon, "Yellow Wave" (detail), 2013, ink, acrylic, glitter, and embroidery patches on Hanji paper, 50 x 90 in. Courtesy of the artist, Saltworks Gallery, Atlanta and Curator's Office, Washington, DC.

norigae.

Adopting many different artistic styles and integrating symbols that range from computer emoticons to Hopi Kachina and Korean masks, called Tal, in her newest work, the artist asks us to navigate through a complex iconography. At the same time, her use of unusual colors and amalgam of various brush strokes in her "fan paintings," upend notions of traditional landscape painting at the same time as they move the compositions towards sculptural form. Moon has included the peach shape, an icon of the state of Georgia, in her work for many years, but in this exhibition the works themselves take fan and peach shapes that can also be read as masks, body parts, or hearts.

Jiha Moon (b. 1973, Korea; lives in Atlanta, GA) received her MFA from the University of Iowa and BFA from Korea University, Seoul. Recent solo exhibitions include MOCA GA, Atlanta (2013); Cheekwood Botanical Garden and Museum, Nashville (2011); Williams Paper Museum, Atlanta (2009); and Mint Museum, Charlotte (2008). Her work has been included in group exhibitions internationally, including at the Fabric Workshop and Museum, Philadelphia (2011); the Virginia Museum of Fine Art, Richmond (2010); the Hirshhorn Museum and Sculpture Garden, Washington DC (2008); and the Drawing Center, New York (2007). She was a 2011 recipient of the Joan Mitchell Foundation Painters & Sculptors Grant. Moon is represented

by Saltworks Gallery, Atlanta; Curator's Office, Washington, DC; and Mary Ryan Gallery, New York.

As the Spring 2014 Falk Visiting Artist at the Weatherspoon and the Art Department at the University of North Carolina at Greensboro, Moon will present a lecture and gallery talk on her work and participate in MFA graduate student critiques.

This exhibition was originally organized by the Museum of Contemporary Art of Georgia as part of the 2012/13 Working Artist Projects award program. Xandra Eden, Curator of Exhibitions organized the exhibition at the Weatherspoon. Special thanks to the 2013/14 Falk Visiting Artist Committee.

Unique images of nature created by Japanese artists from the Edo period (1615-1868) through the twentieth century will fill the Tannenbaum Gallery this spring in the exhibit, *Bugs, Beasts and Blossoms: Japanese Woodblock Prints from the Dr. Lenoir C. Wright Collection*. The two principal artists responsible for introducing this theme to the woodblock print art form were Hokusai (1760-1849) and Hiroshige (1797-1858). Later artists continued their custom of directly observing nature and imbuing its flora and fauna with symbolic meanings. For example, certain blossoms and birds represent specific seasons while particular animals signify distinct attributes or human mannerisms. Each picture offers delight in itself, while the exhibition as a whole conveys Japan's deep-rooted appreciation of the natural world and its unique aesthetic sensibility.

These prints were gifted to the Weatherspoon by Dr. Lenoir "Len" Wright (1911-2003), professor emeritus of History and Political Science at the University of North Carolina at Greensboro. His passion for Asian culture resulted in a collection of over 600 objects that he began donating to WAM in 1978.

Jiha Moon will give an Artist Talk on Jan. 16, from 5:30-6:30pm.

For further information check our NC Institutional Gallery listings, call the Museum at 336/334-5770 or visit (<http://weatherspoon.uncg.edu/>).