

Arts Council of Fayetteville/Cumberland

continued from Page 13

in partnership with a variety of local agencies to stimulate community development through the arts. The Arts Council supports individual creativity, cultural preservation, economic development and

lifelong learning through the arts.

For further information check our NC Institutional Gallery listings, call the council at 910/323-1776 or visit (<http://www.theartscouncil.com>).

Fine Art at Baxters in New Bern, NC, Offers Exhibit Focused on the Spider Lily by Gallery Artists

Fine Art at Baxters in New Bern, NC, will present *Lycoris Radiata*, an exhibit showcasing the Spider Lily, featuring works by gallery artists, on view from Jan. 9 through Feb. 28, 2015. A reception will be held on Jan. 9, from 5-8pm during the downtown Art Walk.

Artists participating in this exhibit include: Sally Anger, Sandy Bruno, Jim Carson, Jean Cheely, Karen Crenshaw, Judith Cutler, Jane Faudree, Drew Grice, Susan Hecht, Georgia Mason, Nancy Noel May, GeeVee Meyer, Coni Minneci, Bruce Nellsmith, Holly Nettles, Patricia Pittman, Bernie Rosage, Jr., Donna Slade, Catherine Thornton, Vicki Vitale, Ken Wallin, Michaele Rose Watson, Linda Werthwein, Martha Williams, and Merv Wilkinson.

The Spider Lily has inspired and challenged gallery artists to create works as varied in their own personal interpretations and style as they are in medium - oil, acrylic, watercolor/ink, glass, ceramic, colored pencil, mixed media and more!

Capt. William Willis Roberts brought the spider lily home to his wife Elizabeth in New Bern - three bulbs that had traveled across the Pacific Ocean from Japan. The year was 1854 and after a slow start, the plants thrived in New Bern. Over the next century and a half, the flowers have become closely associated with New Bern.

For further information check our NC Commercial Gallery listings, call the gal-



Work by Catherine Thornton

lery at 252/634-9002 or visit (www.fineartatbaxters.com).

NC Wesleyan College in Rocky Mount, NC, Features Works by Kathryn Hicks and Ryan O'Doud

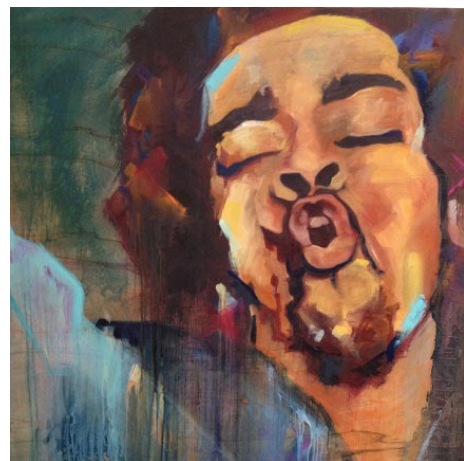
NC Wesleyan College in Rocky Mount, NC, will present an exhibition of works by two young local Expressionist painters, Kathryn Hicks and Ryan O'Doud, on view in the Mims Gallery, from Jan. 9 through Feb. 15, 2015. A reception will be held on Jan. 23, from 7-9pm.

Eastern North Carolina native Kathryn Hicks developed a passion for art early in life. Ever since she was first introduced to oil painting at the young age of nine, she has exploited her natural talent and studied the techniques and concepts that richen her love of painting. She graduated Magna Cum Laude at Meredith College in Raleigh, NC, where she attended on an art scholarship.

"Figurative drawing and painting are the foundation of her celebrity portraits. With loose brush strokes and bold color she will distill the features of her subject and the viewer will come face to face with her subject," says Jimi Hendrix.

Ryan O'Doud is a self-taught expressionist who burst on the scene in 2014 with his first solo *Laws of Emotion* at the Elliot Gallery at the University of North Carolina at Greensboro. Recognized for his talent in his teens he was 2003 Gold Key Award Winner in Buncombe County.

O'Doud may originate his paintings with a portrait subject in a geometric plan, sometimes a saint or self-portrait, but will expand the emotion of his connection



Work by Kathryn O'Doud

to the subject with dynamic gesture and emphatic brush strokes. Unafraid to let improvisation carry the painting along to some finish, we are witness to the trip he has made with a paintbrush.

We hope the greater Eastern North Carolina community will share our commitment to exhibiting the best, most diverse art and talent here in Rocky Mount and join us for our reception parties. We encourage you to collect artworks from the Mims Gallery and support these talented individuals.

For further information check our NC Institutional Gallery listings, call the gallery at 252/985-5268 or visit (www.ncwc.edu/Arts/Mims/).

The deadline each month to submit articles, photos and ads is the 24th of the month prior to the next issue. This will be Jan. 24th for the February 2015 issue and Feb. 24 for the March 2015 issue. After that, it's too late unless your exhibit runs into the next month. But don't wait for the last minute - send your info now.

And where do you send that info?
E-mail to (info@carolinaarts.com).

wishing all our patrons

2015

Happy New Year!

Seacoast Artists Gallery

Original Art created in oils, acrylics, watercolors, fabrics, charcoal, pencil, mixed media, clay, photography, bronze, metal engraving and brass assemblage, to fit any decor and budget!

Get to know the artists...
Come Join us Friday, January 16th
for a wine and cheese reception 6-8pm

Open Daily at Noon
3032 Nevers St • Myrtle Beach SC 29577
Facing Valor Park at The Market Common
seacoastartistsgallery@gmail.com
843-232-7009

www.seacoastartistsgallery.com

An Artist's Journey

Abstracts by
Ginny Lassiter

January 6 - 31, 2015

Reception: January 10, 2-5pm

Fine Arts & Crafts
of the Carolinas



10283 Beach Drive SW
Calabash, NC 28467
910.575.5999
www.sunsetrivermarketplace.com



Night Glow by Ginny Lassiter

Brookgreen Gardens in Pawleys Island, SC, Features Environmental Exhibition

Brookgreen Gardens in Pawleys Island, SC, will host *Environmental Impact*, a cutting edge art exhibition that is touring museums throughout the United States. The purpose of the exhibition is two-fold: 1) to recognize, document, and share the work of leading contemporary artists who choose to focus their art on local and global environmental issues; and 2) to heighten public awareness and concern about the degradation of diverse environments. The exhibition will be on view daily in the Rainey Sculpture Pavilion from Jan. 31 through Apr. 26, 2015 and is free with garden admission.

"Traditional art generally depicts nature in all of its glory," said Bob Jewell, President and CEO. "The artworks in this exhibit present a variety of today's environmental issues and call attention to the consequences of depleting our natural



Work by Chester Arnold

resources."

The 75 paintings, photographs, prints, installations, and sculptures confront issues such as the over-development of land, dangers of nuclear energy, and impact of global warming.

"We are pleased to offer this exhibit to the Brookgreen Gardens audience," said

continued on Page 15