

NC Institutional Galleries

continued from Page 36

Anne Bevan, John Sullivan, Evelyn Chrisawn, Tim Muench, Chuck Aldridge, Charles Davis, Fredreen Bernatovicz, Anne Allison, Darlene Matzer, Billie Haney, Marguerite Welty, Jean Ryan, Kasha Baxter, Linda Magnus, Kim Hostetter, Bonnie Burgin, Sonya Russell, Helen Sullivan, Janet Bennett, and Sabrina Miller. Hours: Thur.-Sat., 11am-5pm & Sun., 1-4pm. Contact: 828/668-1100 or at (<http://arrowhead-art.org/>).

Pembroke

A.D. Gallery, University of NC at Pembroke, 1 University Dr, Pembroke. **Ongoing** - The A.D. Gallery is sponsored by the Art Department of the University of North Carolina at Pembroke. Serving the university and local community, the gallery provides a venue for student and faculty work, as well as that of local, regional, national and international artists. The gallery helps fulfill the department's goal of providing outstanding educational opportunities for its students by bringing quality visual arts to the university and the community at large. Hours: Mon.-Thur., 9am-5pm; Fri., 9am-3pm and Wed. evenings, 5-8pm. Contact: 910/521-6695 or at (www.uncp.edu/a.d.gallery/).

Raleigh

Artspace, 201 E. Davie Street, Moore Square Art District, behind City Market, Raleigh. **Gallery One, Through Jan. 17** - "Fine Contemporary Craft of the Southeast". A reception will be held on Dec. 5, from 6-10pm. Twenty-six artists and craftspeople from Virginia to Arkansas will be featured in the biennial exhibition juried by Stefanie Gerber Darr, Gallery Manager of Arrowmont School of the Arts in Tennessee. Darr selected with an eye for both tradition and boundaries-pushing, and noted that theme became how function became the directive to push artists toward inventiveness. **Gallery Two, Through Jan. 31** - "Threads of War," guest curated by Betsy Greer. Greer is a writer, a researcher, and a maker. She earned her MA in Sociology from Goldsmiths College in London in 2004. She is the author of "Knitting for Good!" and most recently, "Craftivism: The Art of Craft and Activism". The exhibition will feature art by four international artist activists/activist groups, including Roberta Bacic (Chile), Hanne Bang (Denmark), Chalina de la Esperanza (Peru), and The Combat Paper Project (San Francisco, CA). The groups all work with stitching and fibers to create art with the goal to change the world by advocating peace. Hours: Mon.-Sat., 9am-5pm. Contact: 919/821-2787 or at (www.artspacenc.org).

CAM Raleigh, 409 W. Martin Street, between Harrington and West streets, Raleigh. **Main Gallery, Through Jan. 4** - "Limited Visibility." CAM Raleigh is pleased to present an exceptional exhibition of contemporary works from Latin America. Curated by Patricia Garcia-Velez Hanna and Natalia Zuluaga of Miami, Florida, Limited Visibility features a selection of works from the collection of Randy Shull and Hedy Fischer of Asheville, North Carolina and Merida, Mexico. In addition to the works in the Shull Fischer collection, the curators selected works by other leading artists from Latin America. "Limited Visibility" features sculpture, photography, mixed media, painting, video and installation. Hours: Mon., 11am-6:30pm; Wed.-Fri., 11am-6:30pm; Sat. & Sun., noon-5pm; and 1st & 3rd Fri., open till 9pm. Contact: 919/513-0946 or at (<http://cam-raleigh.org/>).

Collective Arts Gallery & Ceramic Supply, 8801 Leadmine Road, Suite 103, Raleigh. **Ongoing** - Featuring works by local and nationally renowned artists on permanent exhibit. Hours: Tue.-Fri. 11am-7pm & Sat., 10am-6pm. Contact: 919/844-0765.



Work by John Menapace

Historic Chancellor's Residence, NCSU, 1903 Hillsborough Street, the future site of the Gregg Museum, Raleigh. **Through Feb. 6** - "SMOKES AND MIRRORS: Reflections of the Self in Photographs by John Menapace," guest-curated by Belén Morata and Sammy Kirby. Menapace has been called "the father of fine art photography in North Carolina," and his entire life's work (nearly 30,000 negatives and 6,500 prints) has

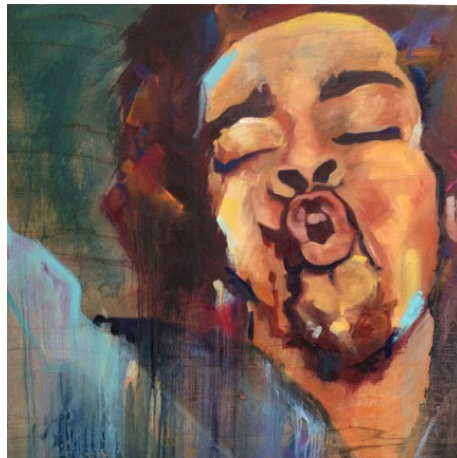
been gifted to the university. In 1955, 28-year-old John Menapace decided to quit his job at Oxford University Press and head off to Mexico on a motorcycle. He bought a second-hand camera to record the trip. Somehow the plan fell through, but the camera opened up a whole new way of seeing. By the time he moved to Durham, NC, the following year to work for Duke University Press, his camera had become an almost constant companion, second only to the cigarettes he famously chain-smoked. Hours: by appt. Mon.-Fri., 9am-5pm. Contact: Zoe Starling, Curator of Education at 919/513-7244.

North Carolina Museum of Art, 2110 Blue Ridge Road, Raleigh. **Through Jan. 4** - "Small Treasures," the first major exhibition to focus on small-scale paintings from the Dutch and Flemish Golden Age. Works by Rembrandt, Vermeer, and other Old Masters invite audiences to look closely at vivid details and incredible technique exhibited in tiny paintings. The exhibit includes more than 60 small paintings by many of the greatest masters from the Dutch and Flemish Golden Age. These small-scale works—most of which are less than 10 in. tall and wide—were an important part of many artists' practices but have historically been overlooked by scholars and museum exhibitions. The NCMA will give them overdue attention and its accompanying catalogue, which will be the first publication to exclusively explore these small-scale works and will include full-size reproductions of each of the paintings in the exhibition. **East Building, Level A, Photography Galleries, Through Mar. 22** - "Private Eye: Allen G. Thomas Jr. Photography Collection". The exhibit features a selection of contemporary photographs from a promised gift to the Museum by Allen G. Thomas Jr. in honor of Dr. Lawrence Wheeler's 20th anniversary as director of the NCMA. Ranging in date from 1993 to 2011, the photographs in the exhibition are by Jeff Bark, Matthew Baum, Jordi Bernadó, Jesse Burke, Anthony Goicolea, Bill Jacobson, Chris Jordan, Sze Tsung Leong, Chris McCaw, Ryan McGinley, Zwelethu Mthethwa, Robert and Shana Parke-Harrison, Jack Pierson, Kerry Skarbakka, Alec Soth, and Shen Wei. The works on view cover a range of photographic techniques and processes, from "straight" photography to highly manipulated, staged, and constructed images. Including expressive portraits, otherworldly landscapes, and abstractions of the natural world, these photographs provide both an introduction to the diversity of contemporary photography and the very personal and passionate point of view of one singular collector. **East Building, Level B, Jan. 9 - Apr. 12** - "Jason Mitcham Video Installations". "These animations began from a need to incorporate time into a painting involving a specific site," artist Jason Mitcham has stated. By altering his paintings mark by mark, Mitcham is able to add both a sensation of time and the fluidity of movement to an otherwise static art form. Each brushstroke—adding up to hundreds or thousands for each video he creates—is meant to "bridge the one before it and the one that will follow it," he says. "More than likely it will be overlaid later on, by other marks needed to tell another part of the story." Hence his paintings are in a constant state of flux throughout their animated life—a strange yet freeing sensation for both artist and viewer, as their notions of what a painting can be are ultimately challenged. "The painting must be allowed to destroy itself in order to become itself," Mitcham says. **North Carolina Gallery, Through Mar. 8** - "Line, Touch, Trace". Organized by Greenhill in Greensboro, NC, the exhibition highlights hand-drawn works by 13 North Carolina artists who use graphite, ballpoint pen, conté crayon, ink, or charcoal to explore drawing in its relationship to thought processes. Line may be used to precisely render contours or as calligraphy on the drawing's surface; touch builds tonal values or erases edges; and traced marks may suggest elements of an imagined topography. The artists use line, touch, and trace in works that communicate mental states, project invented worlds, or portray moments of contemplation. The range of approaches presented attests to the effervescence of drawing and its contribution to contemporary art. **West Building, Ongoing** - Featuring 10 additional sculptures by the celebrated French artist Rodin on loan from Iris Cantor's private collection. **Ongoing** - "John James Audubon's The Birds of America". The state has owned this treasured volume since 1848, but it has never been exhibited. **Ongoing** - The North Carolina Museum of Art has an outstanding permanent collection of more than 5,000 objects spanning antiquity to the present day. On the occasion of the expansion, the Museum has acquired more than 100 new works of art. Representing commissions, gifts, and purchases, the new works encompass important and diverse examples of historic and contemporary art from around the world, and will be installed in the Museum's new building and the surrounding landscape. Highlights include

a gift of 28 sculptures by Auguste Rodin, and work by such internationally acclaimed artists as Roxy Paine, Ursula von Rydingsvard, El Anatsui, Jaume Plensa, Jackie Ferrara, Ellsworth Kelly, and David Park, among others. Hours: Tue.-Sat., 9am-5pm; Sun., 10am-5pm; & open until 9pm on Fri. Contact: 919/839-6262 or at (www.ncartmuseum.org).

North Carolina Museum of History, 5 East Edenton Street, (between Salisbury and Wilmington Streets), Raleigh. **Ongoing** - Featuring exhibits dealing with North Carolina's history as a theme. Admission: Free. Hours: Mon.-Sat., 9am-5pm & Sun., noon-5pm. Contact: 919/807-7900 or at (<http://www.ncmuseumofhistory.org/>).

Rocky Mount



Work by Kathryn Hicks

Mims Gallery, Dunn Center for the Performing Arts, NC Wesleyan College Campus, 3400 N. Wesleyan Blvd., Rocky Mount. **Jan. 9 - Feb. 15** - Featuring works by two young local Expressionist painters, Kathryn Hicks is essentially a portrait painter working in a bold painterly fashion and painter Ryan O'Doud takes a dynamic attack on his portrait subjects. A reception will be held on Jan. 23, from 7-9pm. Hours: Mon.-Fri., 9am-5pm & one hour before performances. Contact: call 252/985-5268 or at (www.ncwc.edu/Arts/Mims/).

Rutherfordton

Rutherford County Visual Arts Center & Gallery, 160 N. Main Street, at the intersection of W. Court St., Rutherfordton. **Ongoing** - Offering a changing exhibit of 2D and 3D art including oils, watercolor, scratchboard, calligraphy, fiber, wood, glass, pottery and fine craft by local artists/fine crafters. Hours: Tue.-Sat., 10am-3pm. Contact: 828/288-5009 or at (<http://www.rcvag.com/>).

ALTERNATE ART SPACES - Rutherfordton **Norris Public Library**, 132 N. Main Street, Rutherfordton. **Through Mar. 31** - Featuring a collection of watercolor paintings by artist John McWhorter of Rutherfordton, in the first Art @ the Library show of 2015. The show is sponsored by the Rutherford County Visual Artists Guild in cooperation with the Norris Public Library. Hours: Mon.-Fri., 9am-5:30pm & Sat., 10am-noon. Contact: Library at 828/287-4981 or Rutherford County Visual Arts Center at 828/288-5009 or e-mail to (rcvartg@gmail.com).

Salisbury/Spencer

Throughout Salisbury & Spencer, Jan. 11, from 1-5pm - "Second Saturday Art Crawl," where more than 20 professional artists, studios and galleries offer visitors new art, special events, and activities. Spend the day and see great art, talk to artists, hear live music, and dine at local restaurants. Free admission to all events and activities. Maps are available at the Visitor Center in Salisbury and at all participating venues. Free parking available in all locations. For more info call 704/638-9887 or visit (www.rowanartcrawl.com).

Waterworks Visual Arts Center, 123 E. Liberty St., Salisbury. **Through Jan. 31** - "Spaces Within," explores the human experience through the lens of selfhood. This exhibition showcases clay, wood, and bronze sculptures by international artist Maria Michaelson, and a selection of glass artwork from the collection of Sonia and Isaac Luski, which is on loan from Foundation For The Carolinas. Having spent years traveling in West Africa, India, Central and South America, Europe and Australia, Michaelson draws from traveling openly, trying to understand what it is like to live in different paradigms, with different beliefs. For nearly forty-seven years, the Luski's have collected artwork from around the world. Every room in their Charlotte home is filled with contemporary, intricate glass pieces as well as paintings and sculpture from renowned artists. The Luski's purchase only the art that they love and are among Charlotte's premier arts patrons and philanthropists. Hours: Mon.-Fri., 10am-5pm; Thur. till 7pm & Sat., 11am-3pm. Contact: 704/636-1882 or at (www.waterworks.org).

Seagrove Area

Museum of North Carolina Traditional Pottery, 122 E. Main St., Seagrove. **Ongoing** - The Museum organization was founded twenty-five years ago in Seagrove, and is dedicated to preserving and perpetuating the pottery tradition. We strive to impart to new generations the history of traditional pottery and an appreciation for its simple and elegant beauty. A display of area pottery is now offered in the old Seagrove grocery building. Hours: Mon.-Sat., 9:30am-3:30pm. Contact: 336/873-7887 or at (www.seagrovepotteryheritage.com).

North Carolina Pottery Center, 233 East Avenue, Seagrove. **Through Jan. 24** - "A Handed Down Art: The Brown Family Potters". The exhibition is a tribute to this family's long, unbroken, multigenerational chain of potters whose knowledge about making pottery has been passed down from family member to family member, and whose adaptive and innovative approach to the trade ensured its durability. The Brown family potters rightfully deserve a place of high standing among America's pantheon of important traditional artisans. The exhibit was curated by Stephen C. Compton. **Ongoing** - Featuring permanent and changing exhibits on the history of North Carolina pottery, "The North Carolina Pottery Tradition" and "Seagrove Area Pottery". The Center also offers information on activities, maps and information about the potteries located in the Seagrove area and across the state. A display of representative works from more than 90 area potteries is also offered. Hours: Tue.-Sat., 10am-4pm. Contact 336/873-8430 or at (www.ncpotterycenter.org).

Siler City

Throughout Siler City, Jan. 16, 6-9pm - "Siler City Art Walk," featuring exhibits at many of the city's exhibit spaces, live entertainment, artist demonstrations, food, local wine or beer tastings, offered in town on the 3rd Fri. of the month. Hosted by the North Carolina Arts Incubator. Contact: 919/663-2072 or at (www.ncartsincubator.org).

North Carolina Arts Incubator Gallery, 223 N Chatham Ave., Siler City. **Ongoing** - Featuring the handcrafted work of over 30 Incubator and regional artists in a variety of mediums including painting, pottery, stained and fused glass, fabric art, cards, photography, wood, jewelry, metal, baskets and more. There is a broad range of items and prices. Hours: Mon.-Sat., 10am-5pm; & 3rd Fri., 10am-9pm. Contact: 919/663-2072 or at (www.ncartsincubator.org).

PAF Gallery, 223 N Chatham Ave., Siler City. **Ongoing** - A gallery featuring works by local and regional artists. Hours: 3rd Fri. 6-9pm. Contact: 919/663-2072 or at (www.ncartsincubator.org).

Southport

Franklin Square Gallery, 130 E. West St., Southport. **Ongoing** - Works by members of the Associated Artists of Southport. Hours: Mon.-Sat., 10am-5pm. Contact: 910/457-5450 or at (www.franklinsquaregallery.com).

Sylva

Gallery One, Main Street, Sylva. **Ongoing** - Home of the Jackson County Visual Arts Association. Hours: Mon.-Fri., 11am-3pm. Contact: call Ray Menzie at 828/293-2239.

Tryon

Tryon Arts and Crafts School, 373 Harmon Field Rd., in the old Tryon Middle School, Tryon. **Gallery & Gift Shop, Ongoing** - Gift Shop features juried works by regional artisans to selected work produced by our instructors and students. Hours: Mon.-Fri., 10am-4pm & Sat. 10am -1pm. Contact: 828/859-8323 or at (www.tryonartsandcrafts.org).

Valdese

Valdese Heritage Arts Center, 146 Main Street West, Valdese. **Ongoing** - The center offers a great selection of unique gifts on exhibit and for sale, including, but not limited to original paintings, pottery, needlework, wood-carvings, hand crafted furniture, ceramic sculptures, stained glass, photography, jewelry, floral arrangements greeting cards, quilts and home made soap. Hours: Mon.-Fri., 9am-5pm & Sat., 11am-3pm. Contact: 828/874-1849 or at (<http://vhac.webs.com>).

Washington

River Walk Gallery and Arts Center, 139 W. Main Street, Washington. **Ongoing** - All work is done by local artists and has to be juried into the gallery. The gallery includes watercolor, oil, and acrylic paintings, photography, pottery, mixed

continued on Page 38