

CURTIS R. HARLEY

ART GALLERY



MIRROR, MIRROR, ON THE WALL

Patti Brady Paintings

JANUARY 15-FEBRUARY 19, 2016

ARTIST RECEPTION- JANUARY 28, 4:30 P.M.

The USC Upstate
Visual Arts Program
includes Bachelor
of Arts programs in:

Art Studio (graphic
design emphasis)
Art Education
Art History (minor)

Harley Gallery:

The Gallery, located on the
first floor of the Humanities
& Performing Arts Center, is
free and open to the public
from 9:00 a.m. - 5:00 p.m.
Mon.-Fri.

To learn more:

Find Us Online:

www.uscupstate.edu/harleygallery

[f](https://www.facebook.com/curtisrharleyartgallery) curtisrharleyartgallery

[t](https://twitter.com/HarleyArtGally) @HarleyArtGally

Or Contact:

Mark Flowers
Gallery Coordinator
(864) 503-5848
mflowers@uscupstate.edu

Jane Nodine
Gallery Director
(864) 503-5838
jnodine@uscupstate.edu

UPSTATE

University of South Carolina Upstate

www.uscupstate.edu
(864) 503 - 5000

Converse College in Spartanburg, SC, Features Works by Charles Ladson

Converse College in Spartanburg, SC, will present *Unrestricted: New Works by Charles Ladson*, on view in the Milliken Art Gallery, from Jan. 7 - 28, 2016. A Gallery Talk will be offered on Jan. 7, at 6pm with a reception to follow at 6:30pm.

Ladson's paintings features a diverse array of subjects ranging from figures to landscapes and beasts forming curious situations and conveying stories open to individual interpretation.

Ladson describes his work as "a long collection of mostly bad ideas, movements, commitments, and random occurrences that have been saved (wholly or partially) or deleted all together. The paintings ramble along in all directions never knowing where they are going, and then they arrive. The content comes intuitively from this process and is more ambiguous than any deliberate attempt at commentary. People see what they want to see and everybody brings his own story to the table."

Ladson received his BFA degree from the School of Visual Arts (NY) and his MFA degree from the University of Georgia. His work has been exhibited at the University of Georgia and the Georgia Museum of Art. He is represented by the Blue Spiral 1 Gallery in Asheville, NC. Ladson currently works from his studio in Macon, GA.

Founded in 1889 and located in the heart of Spartanburg, SC - home to six colleges and 13,000 college students - Converse helps women develop the skills necessary to balance a full life. Students develop their unique voices through our challenging liberal arts curriculum, century-old honor tradition, and Daniels Center for Leadership and Service. Our close-knit residential com-



Work by Charles Ladson

munity cultivates a spirit of sisterhood and enterprise among women diverse in backgrounds and interests. Across the board—from art and design to science, business, music and education—professors actively mentor and challenge students through spirited discussions inside and outside of the classroom. The Nisbet Honors Program, Petrie School of Music, independent and collaborative research opportunities, leading national debate teams, study abroad and internship programs, and a 10:1 student/faculty ratio differentiate the Converse learning community.

Converse competes in NCAA Division II athletics - the highest level of any women's college, is the only women's college on the All-Steinway School roster, and is consistently top ranked by *US News & World Report*.

For further information check our SC Institutional Gallery listings, or e-mail to Kathryn Boucher, Milliken Art Gallery Director at (kathryn.boucher@converse.edu).

Artists' Guild of Spartanburg in Spartanburg, SC, Features Works by Dian Hammett and Lalage Warrington

The Artists' Guild of Spartanburg in Spartanburg, SC, will present *Diverse Expressions*, featuring works by Dian Hammett and Lalage Warrington, on view in the Guild Gallery at the Chapman Cultural Center, from Jan. 4 - 29, 2016. A reception will be held on Jan. 21, from 5-8pm, during the Spartanburg ArtWalk.

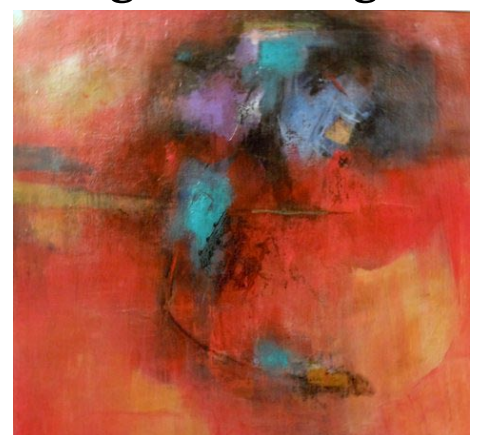
The exhibit will include paintings on canvas and paper by Hammett and an eclectic mix of three-dimensional works in a variety of materials including clay, plaster, and wax by Warrington.



Work by Lalage Warrington

Both artists describe their work in this exhibit as abstract. "My paintings are abstract expressions of the universal theme of searching, whether it be for material things such as food, shelter, and treasure or for the intrinsic of love, peace and security," Hammett says of her work, which has evolved from the more representation art for which she had become known.

Warrington terms herself an "abstract



Work by Dian Hammett

expressionist," citing as inspiration a quotation from William Faulkner, "The aim of every artist is to arrest motion, which is life, by artificial means and hold it fixed so that a hundred years later, when a stranger looks at it, it moves again, since it is life."

Warrington has been commissioned to create more than 25 portrait busts and has also used her skills to complete forensic reconstruction of the soft tissue of the skull, work that led to the presentation of several papers on facial reconstruction to the American Academy of Forensic Scientists.

"My art reflects my love for music in its rhythmic continuity, repetition and message," says Warrington of her desire to lead the viewer to follow the motion of a piece. "It is a visual expression using form, line, negative space, and balance—all working together within a given space to create a song."

Hammett took her creative inspiration from her mother, an accomplished seamstress who filled their home with beautiful fabric, fine laces, and colorful yarns. "These imbued my life with a love

continued on Page 22

The deadline each month to submit articles, photos and ads is the 24th of the month prior to the next issue. This will be Jan. 24th for the February 2016 issue and Feb. 24 for the March 2016 issue. After that, it's too late unless your exhibit runs into the next month. But don't wait for the last minute - send your info now. And where do you send that info? E-mail to (info@carolinaarts.com).