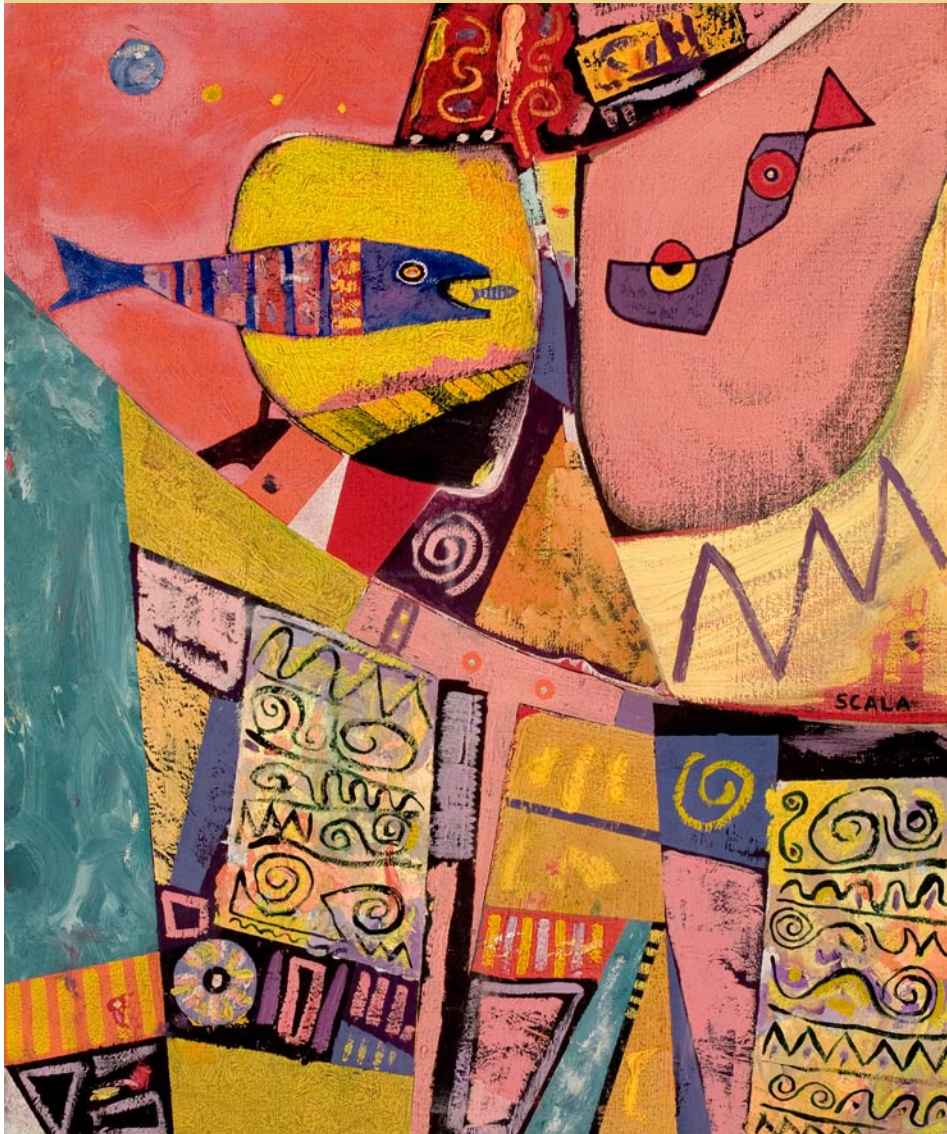


# SCALA

## Surrealist Painter



"Dusk (at the beach)"

[www.peterscala.com](http://www.peterscala.com)

Studio: 843-225-3313

# WELLS GALLERY



"HALF FULL" BY SALLY THARP 60 X 36

VISIT OUR TWO LOCATIONS

125 MEETING STREET CHARLESTON, SC 29401 (843) 853.3233

ONE SANCTUARY BEACH DR. KIAWAH ISLAND, SC 29455 (843) 576.1290  
(IN THE SANCTUARY HOTEL)

WWW.WELLSGALLERY.COM

## Redux Contemporary Arts Center

continued from Page 10 / back to Page 10

Crisp-Ellert Prize, and was featured in *New American Paintings*, No. 88 South Edition as an Editor's Selection. Reimus has exhibited at numerous locations throughout the US, recently at Nudashank and School 33 Art Center in Baltimore, Maryland, and Grizzly Grizzly in Philadelphia, Pennsylvania. Her work explores ornamentation and various household objects of the domestic interior. The emotional, psychological aspect of her work addresses the philosophical questions that arise from the role and purpose of ornamentation. Her recent work specifically targets the role of painting in the scheme of the decorative interior.

Redux Contemporary Art Center is a Charleston, SC nonprofit organization committed to the fostering of creativity and the cultivation of contemporary art through diverse exhibitions, subsidized studio space for artists, expansive educational programming, and a multidisciplinary approach to the dialogue between artists and audience. Housed within a 10,000 square foot warehouse are two galleries, 22 private artist studios, print shop, darkroom, woodshop, classroom, and film-screening area. Redux is committed to showing artwork by national and



Work by Sean Riley

international artists, supporting local artists, and enriching the Charleston community by offering adult and youth education programs. As the only arts organization in Charleston providing these much needed opportunities, Redux maintains an ambitious schedule of exhibition, outreach, and studio programs to accomplish our goals.

For further information check our SC Institutional Gallery listings, call the Center at 843/722-0697 or visit ([www.reduxstudios.org](http://www.reduxstudios.org)).

## Charles Street Gallery in Beaufort, SC, Offers Works by Cabell Heyward

Charles Street Gallery in Beaufort, SC, will present the exhibit, *New Work*, featuring works by Cabell Heyward, on view from Dec. 9 - 31, 2011. A reception will be held on Dec. 9, from 5-9pm.

Heyward is a contemporary oil painter of amazing realism crossed with flagrant surrealism, balanced by humor and skill. Based in Beaufort, her work has been exhibited in the Atlanta Biennial at the Nexus Contemporary Art Center; the Georgia Museum of

Art in Athens; the Peninsula Fine Art Center in Newport News, Virginia; at the Circular Congregational Church in Charleston, regularly in private collections, and in the Charles Street Gallery.

Heyward's newest works, built with oil paints and found objects, in both 2D and 3D, casts the shadows that are deliberately manipulated and wonderfully sneaky, revealing what does and should exist.

continued above on next column to the right

The Charles Street Gallery is an established source for Lowcountry and international art, presented within a carefully renovated house surrounded by a lush garden in the middle of Beaufort's historic district.

For further information check our SC Commercial Gallery listings, call the gallery at 843-521-9054 or visit ([www.thecharlesstreetgallery.com](http://www.thecharlesstreetgallery.com)).

## Society of Bluffton Artists in Bluffton, SC, Offers Works by Barbara Z. Pecce

The Society of Bluffton Artists in Bluffton, SC, is presenting the exhibit, *Treasures of El Yunque: Puerto Rico's Rain Forest*, featuring watercolors by Barbara Z. Pecce, on view through Dec. 17, 2011.

Pecce is a watercolor artist and teacher who has lived in Puerto Rico since 1970. She has chosen the subject of her exhibition to be Puerto Rico's Rain forest. In this collection of transparent watercolors the artist has painted the rich colors and reflections of sunlight and shadows found on the island of

Puerto Rico.

Pecce offers classes in watercolors and sketchbook journaling through the Museo di Arte in Santurce, Puerto Rico. She is a member of the Society of Bluffton Artists, Hilton Head Art League and the Miami Watercolor Society.

New works by 90 members will also be on exhibit.

For further information check our SC Institutional Gallery listings or call the Society at 843/757-6586.

## Art League of Hilton Head on Hilton Head Island, SC, Offers Works by New Craft Guild

The Art League of Hilton Head on Hilton Head Island, SC, is presenting the exhibit, *CraftHiltonHead2011*, featuring the debut exhibition of the Fine Art Crafts Guild, on view in the Walter Greer Gallery at the Arts Center of Coastal Carolina through Dec. 30, 2011. A reception will be held on Dec. 1, from 5-7pm.

Sheri Farbstein, a seasoned Hilton Head artist, is the founder of the Fine Art Crafts Guild. She feels that fine crafts have been upstaged by two-dimensional artwork for too long and is determined to change that with the new Guild and its first exhibition of 20 artists, some of them are Mark Larkin, Angela Misthal, Dicky Stone, and Cindy Levy, who emerged as a Dale Chihuly student and has made her own name. She has created the striking glasswork in Hilton Head's restaurant EAT.

Farbstein says that she and her Craft Guild members are "passionate about fine art crafts!" She also wants the public to know, "that the caliber of crafts you will see in this exhibition will be on par with large craft shows nationwide."

continued on Page 15

### City Gallery at Waterfront Park

Pringle Street in front of the Pineapple Fountain at Waterfront Park  
Open Tue.-Fri., 11am-5pm & Sat.-Sun., noon-5pm during exhibitions

Operated by  
City of Charleston Office of Cultural Affairs  
843/958-6459

<http://citygalleryatwaterfrontpark.com>