

Woolworth Walk in Asheville, NC, Features Works by Angela Alexander and Carol Eder-Smith

Woolworth Walk in Asheville, NC, will present the exhibit *Adornment & Paws*, featuring paintings by Angela Alexander and jewelry by Carol Eder-Smith, on view in the FW Front Gallery, from Dec. 7 - 30, 2012. A reception will be held on Dec. 7, from 5-7pm.

Early childhood admiration for cartoons and the vitality of the artistic community in Asheville sparked Angela Alexander's desire to pursue her dream of becoming an artist. Her process begins with a thought or vision. She then produces numerous sketches until she concretizes the idea. Alexander brings that image to life on canvas with vibrant, brilliant colors. The process is very energizing for her.

The ultimate goal behind each piece is to generate an emotional response from the viewer, a smile or an audible laugh. Why paint pets? Because they represent the purest forms of unconditional love. They love irrespective of gender, race or creed. Alexander's heart goes out to those animals that do not have permanent homes or loving families. She actively works with local animal rescue groups and donates her art to raise awareness and provide financial support for these wonderful organizations that strive to give all animals a deserving, loving home.

Alexander will donate 10% of all sales during this show to the organization



Work by Angela Alexander
Brother Wolf.

There was never a question that Carol Eder-Smith would use her hands in whatever work that she undertook. As an operating room nurse, she saw the amazing things that human hands could do. After taking a jewelry class in college, she found that making jewelry was the best way that her hands could tell her story.

Eder-Smith's jewelry takes shape from silver and gold sheet and wire. The stones that she uses were created by the forces of nature or are early relics of a primitive earth. They serve as inspiration and energy for each piece. Using traditional metal techniques, each piece is created by Eder-Smith and serves as a unique wearable piece of art.

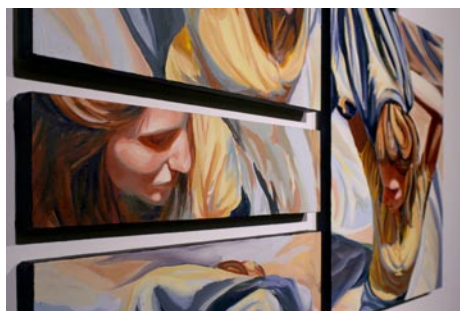
For further information check our NC Commercial Gallery listings or call the gallery at 828/254-9234.

UNC Asheville in Asheville, NC, Features Works by Hanna Trussler

UNC Asheville in Asheville, NC, is presenting the exhibit *Remnants of Fleeting Moments*, featuring oil paintings by UNC Asheville senior Hanna Trussler, on view in the Blowers Gallery, in UNC Asheville's Ramsey Library, through Dec. 14, 2012.

The exhibition presents a series of multi-canvas compositions, which, Trussler says, "emulate the breakdown of memory and process of recollection. By abstracting and fracturing the scenes, the paintings present moments suspended in a state of change."

For further information check our NC Institutional Gallery listings or call



Work by Hanna Trussler
828/251-6436.

Flood Gallery in Asheville, NC, Offers Works by Maureen Robinson

The Flood Gallery in Asheville, NC, will present the exhibit *Travelers*, featuring new work by Maureen Robinson, on view from Dec. 1 - 27, 2012. A reception will be held on Dec. 1, from 6-9pm.

Trainhoppers, a curious subculture that not only exists, but thrives as one of the many social constructs in America today. These "Travelers" are shunned, avoided, and rejected by the status quo. Their lives are harsh and difficult and lived in the extreme. Often these people are hot, cold, hungry, wet, dirty, and uncomfortable. Riding trains is a noisy, bumpy, greasy, and terribly dangerous way to travel. Who are these people? Photographer, Maureen Robinson asked herself this question, and then went out with her camera to study them.

Robinson's photographs tell many stories, stories of loneliness, intrigue, fear, and rejection. But mostly, these images



Work by Maureen Robinson

begin questions of a deeper nature, questions about lifestyles, and ambitions, and a value system with its roots in capitalism.

And then again, perhaps it's just about adventure.

For further information check our NC Institutional Gallery listings, call the Center at 828/254-2166, or visit (www.floodgallery.org).

NC Institutional Galleries

Aberdeen

The Exchange Street Gallery, 129 Exchange Street, in the old Aberdeen Rockfish Railroad storage terminal, Aberdeen. **Ongoing** - The Artist's League of the Sandhills currently houses 35 artists-in-residence studios and offers classes by local professional artists and workshops by nationally known artists. Hours: Mon.-Sat., noon-3pm. Contact: 910/944-3979, or at (www.artistleague.org).

Albemarle

Falling Rivers Gallery, 119 West Main St., next to Starnes jewelers, Albemarle. **Through Dec. 22** - "From Our Hands To Your Home," featuring works from area artists just in time for holiday shopping. **Ongoing** - The gallery is a cooperative venue of the Stanly Arts

Guild. Member staffed, this gallery offers the very best in local art and crafts including oil and watercolor, photography, pottery and ceramic art, jewelry, native American art, gourd sculpture and much more. Hours: Tue.-Fri., 10am-5pm; Thur. till 6:30pm & Sat., 10am-4pm. Contact: 704/983-4278 or at (www.fallingrivers-gallery.com).

Alamance County

BAL Gallery, Holly Hill Mall and Business Center, 309 Huffman Mill Rd., Exit 141 off of 185/140, Burlington. **Ongoing** - Since the beginning of Burlington Artists League in 1972, we have grown to represent many local artists in our immediate area. BAL's express purpose is to promote and elevate the area artists and their fine art spirit in Burlington, NC, and surrounding areas, thereby creating outlets for the artists and encouraging their continuing efforts to improve and create more art work. Along with wall art and bin reproductions, the BAL Artists Gallery also includes 3-D art such as sculptures and pottery. Hours: Mon.-Fri., noon-8pm; Sat., 10am-9pm, & Sun. for special events. Contact: 336-584-3005 or at (<http://balartists.com/joomla/>).

1873 Capt. James & Emma Holt White House, 213 South Main Street, 2 1/2 blocks off 185/40, exit#147, Graham. Home of the Alamance County Arts Council. **Ongoing** - We are committed to shaping the cultural identity of Alamance County by making art a tangible presence in the lives of its citizens. We strive to enhance the quality of life by engaging people in a diverse array of art through the delivery of programming and education, and through the provision of facilities, advocacy, promotion, and funding. Our gift shop, Picasso's Gift Shop, promotes and sells work by local and regional artisans. Admission: free. Hours: Mon.-Sat., 9am-5pm. Contact: 336/226-4495 or at (www.artsalamance.com).

Asheboro

Sara Smith Self Gallery, W.H. Moring, Jr. Arts Center, 123 Sunset Avenue, Asheboro. **Dec. 4 - 21** - "Artists' Hang-Up," featuring an open show where artists can come an hang works in the gallery until it is filled. A reception will be held on Dec. 4, starting at 5:30pm. Hours: Mon.-Fri., 10am-5pm & Sat., 10am-2pm. Contact: 336/629-0399 or at (www.randolphartsguild.com).

Asheville Area

Asheville River Arts District, Asheville. **Dec. 7, 5-8pm** - "First Friday at Five". The galleries, studios and artists of the Asheville River Arts District invite the public to come view the art in this festive venue. Contact: 828/768-0246.

Asheville Art Museum, 2 South Pack Square at Pack Place, Asheville. **Through Jan. 6, 2013** - "Art / Sewn". The exhibition focuses on works of art in which sewing is integral to the making and looking experience. Most importantly, the exhibition attempts to blur the distinction between art and craft so relevant to today's world when so-called fine art has adopted craft forms and techniques, and craft artists are making non-functional work. What the work shares is sewing—sewing on woven fabric, on paper, felts, and skins, and sewing as an artistic means, as expression and as feminist statement. **Through Jan. 20, 2013** - "Madi Lord and Sally Massengale: Chasing the Image". The exhibition brings together the work of two artists who both first became involved with the Asheville Art Museum in the 1990s. Madi Lord's "Rooster" (ca. 1990) and Sally Massengale's "Kitchen Sink" (1992) were acquired for the Museum's Permanent Collection separately but both have won the ongoing affection of the Museum's public. For the first time, the public now has an opportunity to see a range of works by these two prolific artists. **New Media Gallery, Through Jan. 27, 2013** - "Flux Cuts: Experiments in Film". A loosely organized group of artists calling themselves Fluxus, meaning "flow" in Latin, was established in 1962 with artist George Maciunas as its founding member. The Fluxus movement included independent international, multi-disciplinary artists inspired by the Dada movement in the 1920s and artist Marcel Duchamp, as well as artist and composer John Cage. Admission: Yes. Hours: Tue.-Sat., 10am-5pm; Fri. till 8pm & Sun., 1-5pm. Contact: 828/253-3227 or at (www.ashevilleart.org).

Asheville Gallery of Art, Ltd., 16 College Street, Asheville. **Dec. 7 - 30** - "In A Different Light", features a new series of watercolor landscape paintings on illustration board, painted with a brayer and brush to create movement and emotional content by Pamela Haddock. A reception will be held on Dec. 7, from 5:30-8:30pm. **Ongoing** - Featuring original works of art by 28 local artists in oils, acrylics, watercolor, pastel, encaustic, and prints. Hours: M.-Sat., 10am-5:30pm and first Fri. of the month till 8pm. Contact: 828/251-5796 or at

(www.ashevillegallery-of-art.com).

Black Mountain College Museum + Arts Center, 56 Broadway, Asheville. **Through Dec. 29** - "ReVIEWING Black Mountain College 4 Exhibition". The exhibition will address the legacy of Buckminster Fuller as a legendary inventor of the 20th century and a visionary role model for a new generation of artists, thinkers and problem-solvers in the 21st century. The show will represent Fuller's own ideas and inventions through a selection from "Invention: Twelve Around One," a portfolio of screenprints published by the Carl Solway Gallery, which include images and schematics of Fuller's inventions. The exhibition will also represent a new generation of Fuller-inspired thinkers and artists by featuring winning projects from the first five years of The Buckminster Fuller Challenge (BFC), an annual international design challenge awarding \$100,000 to support the development and implementation of a strategy that has significant potential to solve humanity's most pressing problems. A selection of photographs, illustrations, and schematics from each of the Challenge Winners will be chosen for the show by curator Elizabeth Thompson, Executive Director of BFI. **Ongoing** - An exhibition space dedicated to exploring the history and legacy of the world's most acclaimed experimental educational community, Black Mountain College. Hours: Wed.-Sat., noon-4pm or by appt. Contact: 828/350-8484 or at (www.blackmountaincollege.org).

Blowers Gallery, main floor of UNCA's Ramsey Library, Asheville. **Through Dec. 14** - "Remnants of Fleeting Moments," featuring an exhibit of oil paintings by UNC Asheville senior Hanna Trussler. Hours: regular library hours. Contact: 828/251-6546.



Work by Maureen Robinson

Flood Gallery Fine Arts Center, 109 Roberts St., Asheville. **Flood Gallery, Dec. 1 - 27** - "Travelers: New work by Maureen Robinson". A reception will be held on Dec. 1, from 6-9pm. Trainhoppers, a curious subculture that not only exists, but thrives as one of the many social constructs in America today. Robinson asked herself this question, and then went out with her camera to study them. **Ongoing** - Dedicated to advancing the careers of emerging and mid career artists, as well as educating the public and furthering the understanding of contemporary art and its importance within the community and beyond. Hours: Mon.-Sat., 10am-4pm. Contact: 828/255-0066 or at (www.philmecanicstudios.com).

Grove Arcade Art & Heritage Gallery, One Page Ave., Suite 115, on O. Henry Ave., Asheville. **Ongoing** - The gallery is a project of the Grove Arcade Public Market Foundation and features the crafts, music and stories of the Blue Ridge. The gallery features a state-of-the-art, interactive exhibition that uses a solid terrain model animated with regional voices, video, music and lasers to bring the culture and history of Western North Carolina to life. Rotating exhibitions of regional crafts will bring emerging artists and new stories to gallery visitors. Hours: Mon.-Sat., 10am-6pm & Sun., noon-5pm. Contact: 828/255-0775 or at (www.grovearcade.com).

Guild Crafts of Southern Highland Craft Guild, 930 Tunnel Road, Asheville. **Ongoing** - Work by members of the Southern Highland Craft Guild in various media. Hours: Mon.-Sat., 9:30am-5pm. Contact: 828/298-7903.

Highsmith University Union Gallery, located on the ground floor of UNC Asheville's Highsmith University Union, Asheville. **Through Dec. 14** - "Ashley Hinceman, BFA Senior Exhibition in Printmaking". Hours: Mon.-Sat., 9am-6pm & Sun., noon-6pm. Contact: 828/251-6559 or at (<http://art.unca.edu/>).

NC Homespun Museum, next to Grovewood Gallery, at Grove Park Inn, 111 Grovewood Road, Asheville. **Ongoing** - Featuring the Conway Collection of Appalachian Crafts, owned by Mr. and Mrs. Bob Conway, who began collecting over 40 years ago while visiting the Southern Highland Craftsman Fair at the Civic Center in downtown Asheville. They also collected pottery & other traditional crafts from the Crafts Center during the State Fairs in Raleigh. Hours: Mon.-Sat., 10am-5pm & Sun., 1-5pm. Contact: 828/253-7651.

continued on Page 37