

SC Commercial Galleries

continued from Page 37

COCO VIVO interior and fine art for relaxed living, Gallery Row, 25 Broad St., Charleston. **Ongoing** - Featuring works by Tony van Hasselt, Mitch Billis, Patricia Roth and Roger Milinowski. Also representing jewelry designer Betty Holland and photographer Sandy Logan. Hours: Mon.-Sat., 9:30am-5:30 & Fri. till 8pm. Contact: 843/720-4027.

Coleman Fine Art, 79 Church St., Charleston. **Ongoing** - Both a fine art gallery, and a gold leaf studio, Coleman Fine Art has been representing regional and national artists for over 30 years. The Coleman studio produces the finest handcrafted gilt frames, and offers gilding restoration. The gallery specializes in Contemporary American paintings of both the American Impressionist and Realist schools. We proudly represent watercolor painter Mary Whyte, whose paintings focus on the life and culture of the indigenous people of the South Carolina Lowcountry. Currently we represent some of the country's leading plein-air painters, John Cosby, Gil Dellinger, Marc R. Hanson, Kevin Macpherson, Gregory Packard, George Strickland, and Mary Whyte. Hours: Mon., 10am-4pm; Tue.-Sat., 10am-6pm or by appt. Contact: 843/853-7000 or at (www.colemanfineart.com).

Cone 10 Studios, 1080-B Morrison Drive, in the heart of NoMo, Charleston. **Ongoing** - A studio and gallery of local potters and sculptors. We also offer classes in beginning to intermediate wheel throwing and clay sculpture. Hours: Mon.-Sat., 11am-5pm & Sun., 1-5pm. Contact: 843/853-3345 or at (www.cone10studios.com).

Corrigan Gallery, 62 Queen Street, Charleston. **Dec. 3 - 31** - "Galacticos - Cutouts and Drawings," featuring works by Case Jernigan. A reception will be held on Dec. 3, from 5-8pm. **Ongoing** - Contemporary fine art including paintings, photography, prints and sculpture. Now showing works by Manning Williams, Richard Hagerty, Joe Walters, Sue Simons Wallace, Gordon Nicholson, John Moore, William Meisburger, Mary Walker, Kristi Ryba, Paul Mardikian, Kevin Bruce Parent and Judy Cox. Located in the heart of the downtown historic district of Charleston's French Quarter. Artist at work on location - work in progress to be viewed. Hours: Mon.-Sat., 10am-5pm or by chance & appt. Contact: 843/722-9868 or at (www.corrigan-gallery.com).

Courtyard Art Gallery, 149 1/2 East Bay Street, Charleston. **Ongoing** - Featuring works by Veronique Aniel, Melissa Breeland, Mary Ann Bridgman, Renee Bruce, Beverly Brunswig, Wilma Cantey, Carole Carberry, Linda Churchill, Christine Crosby, Judy Jacobs, Alix Kassing, Jennifer Koach, Tug Mathisen, Yvonne Rousseau, Suzy Shealy, Coleen Stoioff, and Tom Tremaine. Hours: Mon.-Sat., 10am-5pm & Sun. noon-5pm. Contact: 843/723-9172 or at (www.courtyardartgallery.com).

Dog & Horse, Fine Art and Portraiture, & Sculpture Garden, 102 Church St. Charleston. **Ongoing** - Representing more than 30 artists from the US, UK and Europe, Dog & Horse Fine Art offers the finest in animal art and portraiture in a wide range of styles, in almost every medium, from antique to modern day. Hours: Mon.-Fri., 10am-5pm & Sat., 11am-5pm. Contact: 843/577-5500 or at (www.dogandhorsefineart.com).

East Bay Garden Gallery, 114 E. Bay St., in Coates Row, near Rainbow Row, Charleston. **Ongoing** - Artist and owner, W. Hampton Brand provides a unique and more complete "Charleston experience" with his art. His primary subject is the significant architecture and beautiful historic buildings of our city. For those who seek the ultimate Charleston keepsake - he puts his art on the increasingly rare artifacts of historic roofing slate and old handmade Charleston brick. In addition to his art, you're invited to browse among the eclectic garden finds in the courtyard including old gates, statuary, pottery, unique iron pieces and so much more. Hours: Mon.-Sun., 9am-2pm. Contact: 843/958-0490 or 843/327-6282.

Edward Dare Gallery, 31 Broad Street, between Church & State Sts., Charleston. **Ongoing** - Located on historic Broad Street's GALLERY ROW in the French Quarter of Charleston, SC, the gallery features an extensive variety of fine art including landscape, figurative, still life & marine paintings plus exquisite pottery, photography, fine handcrafted jewelry, unique works in glass & metal plus bronze sculpture - all by some of the most sought after artists in the low country and accomplished artists from across the nation. Many of the artists represented have a personal connection to Charleston and the coastal Carolinas and tend

to include pieces that celebrate the colorful tapestry of the southern coastal culture. Visit the gallery to see crashing waves, lush marshes, still lifes of camellias & oyster shells, coastal wildlife and sensitive yet powerful portraits of the south. Hours: Mon. - Sat., 11am-5pm. Contact: 843/853-5002 or at (www.edwarddare.com).



Work by Jeff Jamison

Ella Walton Richardson Fine Art Gallery, 58 Broad St., Charleston. **Dec. 4 - Jan. 8** - "Jeff Jamison: Metropolitan". A reception will be held on Dec. 4, from 5-8pm. Jamison is back this fall at Ella Walton Richardson Fine Art with a new exhibition celebrating the romance of city life. Jamison's contemporary Impressionist style is playful, yet thought-provoking and his unique style brings collectors from near and far. In "Metropolitan," lovers and dog walkers stroll rainy sidewalks and sit in street cafes as Jamison captures the simplest moments in beautiful ways. **Ongoing** - Founded in 2001, this internationally acclaimed fine art gallery is located in the historic French Quarter district in Charleston. Richardson represents American, Dutch, and Russian-born artists of the contemporary Impressionist, Realist, and Abstract styles. Sculpture by the award-winning Marianne Houtkamp and photography by Richardson also fill the elegant and inviting space. In addition, the gallery is available as a scenic event venue. Hours: Mon.-Sat., 10am-5pm. Contact: 843/722-3660 or e-mail to (info@ellarichardson.com).

Ellis-Nicholson Gallery, 1.5 Broad St., Charleston. **Ongoing** - Paintings by Victoria Platt Ellis, Jeannette Cooper Nicholson, Brian Scanlon and Robert M. Sweeny. Also representing sculptors Alex Palkovich and John Douglas Donehue, Jr.; jewelry designers Rebecca Johnston and Carole McDougal; potter Mary Nicholson and glass blower Michael Barnett. Hours: Mon.-Sat. 11am-6pm or by appt. Contact 843/722.5353 or at (www.ellisnicholsongallery.com).

Eva Carter's Studio, Wadmalaw Island, Johns Island. **Ongoing** - Offering the bold abstract expressionist oil paintings of Eva Carter. Hours: by appt. only. Contact 843/478-2522 or at (www.evacartergallery.com).

FABULON, A Center for Art and Education, 1017 Wappoo Road, West Ashley, Charleston. **Ongoing** - Fabulon is a new gallery in West Ashley. It represents encaustic work by Susan Irish, artisan furniture, unique hand crafted jewelry by Chloda and a variety art from new and emerging artists. Fabulon also offers group and private classes for adults, children, and home scholars. We now represent: Julia Deckman, Meyriel Edge, Susanne Frenzel, Alice Stewart Grimsley, Laura McRae Hitchcock, Hampton R. Olfus, Jr., Steven Owen, Steven Owen, Ryan Siegmann, David R. Warren, Kenneth E Webb. Hours: Tue.-Sat., 10am-6pm. Contact: 843/566-3383 or at (www.fabulon.art.com).

Fire & Earth: Fine Pottery, 1417 Ashley River Rd., Charleston. **Ongoing** - Featuring original work by gallery owner Kris Neal, and the Charleston area's most comprehensive pottery classes. Hours: Mon.-Sat., 10am-6pm. Contact: 843/766-2776 or at (www.fireandearthpottery.com).

Galerie on Broad, 29 Broad Street, Charleston. **Ongoing** - The gallery is dedicated to bringing national and international artists to the art scene. Art collectors from all over find their way into the cozy and quaint atmosphere of Historic Gallery Row. Galerie on Broad features impressionistic landscapes and figurative works by nationally and internationally known artists such as Calvin Liang, Camille Przewodek, Lori Putnam, Dee Beard Dean, Richard OverSmith, Kate Mullin, Katie Dobson Cundiff, James Richards, Giner Bueno, Marc Esteve, and John Michael Carter. Hours: Mon.-Sat., 11am-5pm. Contact: 843/410-6332 or at (www.galerieonbroad.com).

Gaye Sanders Fisher Gallery, 124 Church St., Charleston. **Ongoing** - Featuring original oil and watercolor paintings by Gaye Sanders Fisher. Hours: Mon.-Sat., 10am-5pm; Sun. 1-5pm. Contact: 843/958-0010 or at (www.gayesandersfisher.com).

Gordon Wheeler Gallery, 180 East Bay Street, Charleston. **Ongoing** - Original paintings and limited edition prints of golf, lowcountry landscapes and Charleston scenes by Gordon Wheeler. Hours: Mon.-Sat., 10am-6pm; Sun. 11am-4pm. Contact: 843/722-2546.

Hagan Fine Art Gallery & Studio, 27 1/2 State St., Charleston. **Ongoing** - Featuring works by Karen Hewitt Hagan. Hours: Tue.-Sat., 11am-5pm. Contact: 843/754-0494 or at (www.Hagan-FineArt.com).

Helena Fox Fine Art, 106-A Church Street, Charleston. **Ongoing** - Featuring works by West Fraser, Johnson Hagoood, Margaret M. Peery, Julyan Davis, and Craig Crawford, along with the stable of artists Helena Fox Fine Art continues to represent including: Sarah Amos, Kenn Backhaus, John Budicin, Terry DeLapp, Donald Demers, Mary Erickson, Joseph McGurl, Billyo O'Donnell, Joseph Paquet, and Kent Ullberg. Hours: Mon.-Sat., 11am-5pm or by appt. Contact: 843/723-0073 or at (www.helenafoxfineart.com).

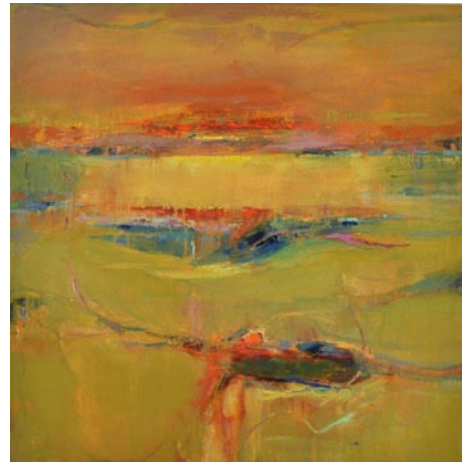
Horton Hayes Fine Art, 30 State St., Charleston. **Ongoing** - Featuring marshscapes and Lowcountry images of shrimpers, crabbers, clambers, and oyster harvesters in oils and acrylics by Mark Horton. Also works by Nancy Hoerter, Shannon Runquist, Bjorn Runquist and Chris Groves. Hours: M.-Sat., 10am-5:30pm & Sun., 12:30-5pm. Contact: 843/958-0014 or at (www.hortonhayes.com).

Imaging Arts Gallery, 175 King Street, between Clifford and Queen, Charleston. **Ongoing** - A unique showcase of photography including LeCroy's vastly enlarged leaves, plants, and flowers - a culmination of photography and technology, as they reveal detail and color that is beyond the reach of the unaided eye. The fine art photography contains a selection of cityscapes, black and whites, international architecture, and others. Unique framed pieces that combine 19th century daguerreotypes, ambrotypes, and tintypes with enlarged images will delight history enthusiasts. LeCroy's photographs are additionally on exhibit at the New York Hall of Science, New York. Hours: Mon.-Sat., 10am-6pm & Sun., 2-5pm. Contact: 843/577-7501 or at (www.imagingarts.com).

Indigo Fine Art Gallery, 102 Church St., Charleston. **Ongoing** - Featuring artwork by Paula Lonneman and Judith Perry, along with handblown glass seashells, raku pots and the work of special guest artists throughout the year. Stop by and see works-in-progress as well, since the artist/owners are always there & probably painting! Hours: Mon.-Sat., 10am-5pm. Contact: 843-805-9696 or at (www.IndigoFineArtGallery.com).

Julia Santen Gallery, 188 King Street, Charleston. **Ongoing** - Offering original vintage poster art, encompassing the Belle Epoque, Art Nouveau, Art Deco and Contemporary eras. Hours: open mostly, closed sometimes and by appt. Contact: 843/534-0758 or at (www.juliasantengallery.com).

Lambert Gallery, 749 Willow Lake Road, Charleston. **Ongoing** - Featuring the gallery and studio space for Hilarie Lambert. Hours: call, by appt. Contact: 843/822-1707 or at (www.hlambert.com).



Work by Laura Szweda

Laura Liberatore Szweda Studio, Kiawah Island. **Ongoing** - Featuring contemporary fine art paintings. Hours: by appointment only. Contact: 843/768-4795 or at (www.LauraLiberatoreSzweda.net).

Lowcountry Artists Gallery, 148 E. Bay St., Charleston. **Ongoing** - Featuring works by Norma Morris Ballentine, Helen K. Beacham, Marty Biernbaum, Laura Cody, Lynne N. Hardwick, Rana Jordahl, Rebecca Leonard

and Sandra Roper along with 25 additional guest artists. Hours: Mon.-Sat., 10:30am-6pm & Sun., 1-5. Contact: 843/577-9295 or at (www.lowcountryartists.com).

Martin Gallery, 18 Broad Street, ground floor of the Peeople's Building, corner of Broad and State Streets, Charleston. **Ongoing** - Featuring paintings by Mitch Billis, Kathleen Billis, Italian master Imero Gobbato, William Crosby, Christopher Schink, Jennifer Spencer, Jared Clackner, and Gilles Charest; sculpture by Leo Osborne, Claire McArdle, and James R. Pyne; and photography by Michael Kahn. Also, offering select jewelry and glass art by America's best artisans, featuring custom designs by acclaimed master goldsmith Glade Sarbach Davis. Hours: Mon.-Sat., 10am-6pm; Sun., 1-5pm & by appt. Contact: 843/723-7378 or at (www.martingallerycharleston.com).

Mary Martin Gallery, 103 Broad Street, Charleston. **Ongoing** - Mary Martin Gallery has always specialized in representing top contemporary artists, and has also identified and mentored little-known artists to national recognition. MMG is the perfect venue for artists who represent a variety of styles and techniques. Some of the most notable artists of museum quality are Jean-Claude Gaugy, Martin Eichinger, Andre Kohn, Vadim Klevenskiy, Tatyana Klevenskiy, Richard Johnson, Alvar, Pujol, Pietro Piccoli, Baques, Mario, Monica Meunier, Larry Osso, Mark Yale Harris, Philippe Guillerm, Richard Riverin, Judy Fuller, Graciela Rodo Boulanger, Ann Dettmer, Sangita Phadke, R. John Ichter, John Gregory, and others. Hours: Mon.-Sat., 10am-5:30pm and Sun., noon-5pm. Contact: 843-723-0303 or at (www.marymartinart.com).

McCallum - Halsey Gallery and Studios, 20 Fulton St., Charleston. **Ongoing** - Featuring works by two of the southeast's foremost artists, Corrie McCallum and William Halsey. Including paintings, graphics, and sculptures for the discerning collector. Hours: by appt. only. Contact: 843/813-7542; 904/223-8418; or 501/650-5090.

Michael Parks Gallery, 35 Broad Street, Charleston. **Ongoing** - Featuring fine art photography by Michael Parks and a variety of fine artworks by selected artists. Hours: Tue.-Sat., 10am-5pm. Contact: 803/348-3202 or e-mail to (michaelparksgallery@gmail.com).

Nina Liu and Friends, 24 State St., Charleston. **Ongoing** - Group show by gallery artists. Hours: Mon.-Sat., 10am-5pm & Sun., noon-5pm. Contact: 843/722-2724 (call ahead to make sure the gallery is open).

One of a Kind Art & Fine Craft Gallery, 74 N. Market Street, Charleston. **Ongoing** - Featuring unique arts and crafts from over 400 American artists, including many local artisans. Hours: Sun.-Thur., 10am-10pm & Fri.&Sat, 10-11pm. Contact: 843/534-1774.

Paul Silva Gallery, 188 Meeting Street, Charleston. **Ongoing** - The art and musings of Paul Silva. All mediums from oils and acrylics to mixed media digital art. Hours: Mon.-Sun., 9:30am-6pm. Contact: 843/849-0031 or at (www.paulsilvaart.com).

People, Places, & Quilts, 1 Henrietta Street, Charleston. **Ongoing** - Featuring fabric, books, patterns, notions, quilts and Folk Art. Hours: Mon.-Sat., 10am-5pm. Contact: 843/937-9333 or at (www.ppquilts.com).

Photographics - Portrait Photography & Art Gallery, 458 Freshfields Dr., in the Freshfields Village, Johns Island. **Ongoing** - Representing painters and photographers who exemplify the greatest ability to evoke a mood or sensory impression of a chosen subject matter. This subject matter varies and includes landscapes and still-life depictions of Lowcountry scenes as well as themes and experiences from the travels of its artists. The gallery features original works in oil, watercolor, gouache, mixed-media and fine-art photography. Representing national artists: Billie Sumner, Fred Jamar, Tammy Papa, Pam Cohen, Vickie Ellis, Aija Sterns, Elizabeth Drozeski, Sharlyne Duffy, and Michael Cyra. Hours: Mon.-Sat., 10am-6pm or by appt. Contact: 843/768-3030 or at (www.kiawahislandphoto.com).

Principle Gallery: Charleston, 125 Meeting Street, Charleston. **Ongoing** - The gallery finds joy in sharing museum-quality works from established American and international artists within the realm of Contemporary and Classical Realism. In its inaugural year, the gallery invites you into its light-filled space for monthly shows featuring fresh, exciting work from the multi-faceted and diverse Principle Family of Artists, along with national invitational shows, and curated events. Hours: Mon.-Tue., 10am-3pm; Wed.-Sat., 10am-6pm; & Sun., 11am-4pm. Contact: 843/727-4500 or at (www.principlegallery.com).

continued on Page 39