

SC Commercial Galleries

continued from Page 38

Rebekah Jacobs Gallery, 54 Broad Street, 2nd level, Charleston. **Ongoing** - Focusing on Southern artists and photographers who have powerful visions of the land of their birth supported by an advanced mastery of their media. The gallery maintains an accelerated exhibition schedule, non-media specific, which features one-person and group shows throughout the year. Hours: Tue.-Sat., 10am-5:30pm or by appt. Contact: 843/937-9222 or at (www.rebekahjacobgallery.com).

Reinert LePrince Fine Art, 179 King Street, Charleston. **Ongoing** - Featuring works by local painters Rick Reinert and Kevin LePrince with works by sculptor David Turner. Hours: daily from 10am-5pm. Contact: call 843/793-4765 or at (www.reinertleprince.com).

Rhett Thurman Studio, 241 King St., Charleston. **Ongoing** - Featuring original works by Rhett Thurman in conjunction with The Sylvan Gallery. Hours: by appt. only. Contact: 843/577-6066.

Robert Lange Studios, 2 Queen St., Charleston. **Dec. 4 - 23** - "Stages," featuring paintings by Brett Scheifflee. A reception will be held on Dec. 4, from 5-8pm. Born and raised in New York, Brett Scheifflee is a newcomer to Robert Lange Studios. Scheifflee started the series of landscape paintings for his solo show "Stages" shortly after being accepted to the Robert Lange roster of artists at the beginning of 2014. **Ongoing** - Featuring works by Ali Cavanaugh, Megan Aline, Robert Lange, Nathan Durfee, Kerry Brooks, Jessica Dunegan, Fred Jamar, Michael Moran, Amy Lind, Adam Hall, Joshua Flint, Sean Clancy, and JB Boyd. Hours: Mon.-Sun., 11am-7pm. Contact: 843/805-8052 or at (www.robertlangestudios.com).

Spencer Art Gallery I, 55 Broad St., in historic French Quarter District, Charleston. **Ongoing** - Offering the works of over 35 award winning artists in a delightfully eclectic mix of subject matter, styles, and media. Hours: Mon.-Sat., 10am-5pm. Contact: 843/722-6854 or at (www.spencerartgallery.com).

Spencer Art Gallery II, 57 Broad St., in historic French Quarter District, Charleston. **Ongoing** - Offering the works of over 35 award winning artists in a delightfully eclectic mix of subject matter, styles, and media. Hours: Mon.-Sat., 10am-5pm. Contact: 843/723-4482 or at (www.spencerartgallery.com).

Studio 151 Fine Art Gallery, 175 Church St., just south of the corner of Market and Church St., Charleston. **Ongoing** - Featuring original art in traditional, realism, wildlife, impressionism collage, and abstracts in a variety of mediums, including photography and hand crafted jewelry. Offering the works of Colleen Wiessmann, Rosie Phillips, Shelby Parbel, Bob Graham, Amelia Whaley, Dixie Dugan, Nancy Davidson, Sandra Scott, Jennifer Koach, Michel McNinch, Amelia Rose Smith, Lissa Block, Debra Paysinger, Charles Moore, Roger Tatum, Daryl Knox, Gina Brown and Madison Latimer. We also participate in Charleston's historic French Quarter art walks every March, May, October and December. Hours: Mon.-Thur., 10am-6pm, Fri. & Sat., 10am-8pm; and Sun., 11am-5pm. Contact: 843/579-9725 or at (www.studio151finearts.com).

Surface Craft Gallery, 49 John Street in downtown Charleston. **Ongoing** - The gallery will feature contemporary work from fine craft artisans in the Charleston region and beyond. Works in ceramics, handblown & fused glass, book arts, paper, printmaking, jewelry and wood will be offered. In addition to featuring new craft artists into Charleston, the gallery will also offer a handmade gift registry. Hours: Tue.-Sat., 10am-5pm and Sun., 11am-4pm. Contact: 843/203-3849 or at (www.surfacegallerycharleston.com).

THALO-Working Studio Gallery, LLC, 7 Broad Street, Charleston. **Ongoing** - Featuring works by Christine Crosby and Katherine DuTremble in their working studio. DuTremble is also a printmaker and brings her knowledge and expertise in the making of monotypes to the public's view. They also have the late glassmaker Herman Le-onhardt's work on exhibit and available for sale. Hours: Mon.-Sat., 10am-5pm. Contact: 843/327-5926 or at (www.thalostudio.com).

The Art MECCA of Charleston, 427 King Street, Charleston. **Ongoing** - Artists work here, create here, and sell here. On weekends people love popping in to see what type of live art is being created. Hours: Mon.-Sat., 11am-7pm. Contact: 843/577-0603 or at (www.artmeccaofcharleston.com).

The Audubon Gallery, 190 King St., Charleston. **Ongoing** - "Charleston's only gallery for the

Natural History and sporting art enthusiast!" Locally owned, the gallery specializes in the golden age of natural history (1700-1900), emphasizing John James Audubon, one of Charleston's most highly regarded artist. Here, you will find a tour-de-force of Audubon's "Birds of America" as well as other highly acclaimed natural history art. A sportman's paradise with a large selection of antique wildfowl decoys, collectibles, nostalgic paintings, prints of days afield and favorite hunting dogs. We offer museum-quality framing and conservation services for works of art on paper to protect and present your most treasured pieces. Hours: Mon.-Sat., 10am-5pm or by appt. Contact: 843/853-1100 or at (www.audubonart.com).

The Brizard Studio, one King Street, Suite 404, Charleston. **Ongoing** - Original fine oil paintings by Robin Brizard, award-winning impressionist artist. Hours: by appt. only, call 843/577-0964.

The Charleston Renaissance Gallery, 103 Church Street, at St. Michael's Alley, Charleston. **Ongoing** - Showcasing nineteenth century oil paintings, works on paper and sculpture of the American South. Hours: Mon.-Sat., 10am-5pm. Contact: 843/723-0025 or at (www.fineartsouth.com).

The George Gallery, 50 Bogard Street, Charleston. **Ongoing** - Currently representing Gary Grier, Amanda Norman, Paul Yanko, Alan Taylor Jeffries and Evan Armstrong, the gallery presents a feast for the eyes with art that is thought provoking and visual stimulating. In addition to sales, we offer consulting and professional installation services. We are here to make your art collecting experience simple and enjoyable. Hours: Tue.-Sat., 10am-5pm. Contact: 843/579-7328 or at (www.georgegalleryart.com).

The John Carroll Doyle Art Gallery, 125 Church St., Charleston. **Ongoing** - Featuring works by the late John Carroll Doyle and Margaret Petterson. Hours: Tue.-Sat., 10am-5pm. Contact: 843/577-7344 or at (www.johncdoyle.com).

The John M. Dunnann Gallery, 121 Church Street, Charleston. **Ongoing** - Featuring works by John M. Dunnann. Including stylistic gesture drawings, paintings and sculpture. Hours: Mon.-Sat., 10am-5pm. Contact: 843/720-7425 or at (www.johndunnann.com).

The Silver Puffin, 329 King Street, across from Bob Ellis Shoes, Charleston. **Ongoing** - Featuring unique American and International arts and crafts with emphasis on the work of local artisans. Hours: daily, 10am-6pm. Contact: 843/723-7900 or at (www.silverpuffin.com).

The Sylvan Gallery, 171 King Street, Charleston. **Ongoing** - Featuring 20th & 21st Century traditional and representational paintings and sculpture. Featuring works by: Cyrus Afsary, Carolyn Anderson, William "Bill" Berra, Scott Burdick, Nancy Bush, Frank DiVita, Glenna Goodacre, John Austin Hanna, Doug Higgins, William Kalwick, Ramon Kelley, Linda Kyser-Smith, Kent Lemon, Huihan Liu, Sue Lyon, Karol Mack, Eric Michaels, Anthony Palliser, Kate Palmer, Joan Potter, W. Stanley "Sandy" Proctor, Paul Strisik, Sonya Terpening, Barry Thomas, Rhett Thurman, Curt Walters, and Wayne E. Wolfe. Hours: Mon.-Fri., 9am-5pm; Sat., 10am-5pm; & Sun., 11am-4pm. Contact: 843/722-2172 or at (www.thesylvangallery.com).

The Wells Gallery at The Sanctuary, at The Sanctuary on Kiawah Island, about 30 minutes from Charleston, in Kiawah's newest and most luxurious resort. **Dec. 18 - Jan. 3, 2016** - "Stephen Scott Young: American Master". **Ongoing** - Featuring a selection of paintings, jewelry and sculptures of some of the Lowcountry's finest artists, Betty Anglin Smith, Shannon Smith, Jennifer Smith Rogers, George Pate, Glenn Harrington, Gary Gowans, Karen Larson Turner, Kim English, Felice Killian, Grainger McKoy and Darrell Davis. Hours: Mon.-Sat., 10am-8pm & Sun., 10am-6pm. Contact: 843/576-1290 or at (www.wellsgallery.com).

ALTERNATE ART SPACES - Charleston
The Real Estate Studio, 214 King Street, Charleston. **Dec. 2 - Jan. 4** - "The Light of Paris and the Low Country," featuring works by [Hilarie Lambert](#), [Sheryl Stalaker](#), and [Madeline Dukes](#). A reception will be held on Dec. 4, from 5:30-8pm. The exhibit will feature the artists' glimpses and observations of the vast cultural and natural landscapes of home and abroad. The locales of Paris and the Low Country provide ample subject matter for these artists. Hours: Mon.-Sat., 9am-5pm & Sun., noon-5pm. Contact: call 843/722-5618.

Columbia Area

Main Street, downtown Columbia. **Dec. 3, 6-9pm** - "First Thursday on Main". This monthly event held on the 1st Thursday of the month features art presentation - up and down Main Street. Some of the participants include: Tapp's Arts Center, Columbia Museum of Art, Anastasia & Friends Art Gallery, Frame of Mind, Artists in the Arcade, and more. For further information contact Mark Plessinger of Frame of Mind at 803/988-1065, e-mail at (frameofmind@sc.rr.com) or Lorri-Ann Carter of CarterTodd & Associates at 803/779-4005, e-mail at (la@cartertodd.com).

Vista Area of Columbia. Dec. 17, 5:30-8pm - "Third Thursday in the Vista," featuring an art walk of galleries and art spaces in the Vista area along the Congaree River, including City Art Gallery, Ellen Taylor Interiors, if ART Gallery, Lewis & Clark, The Gallery at Nonnah's, One Eared Cow Glass, Studio Cellar, and Vista Studios / Gallery 80808. For further info contact any of the galleries or visit (<http://www.vistacolumbia.com>).

Alicia Leeke Fine Art Studio, 3821 Edinburg Rd., Columbia. **Ongoing** - Featuring original acrylic cityscapes, abstracts, monotypes, and drawings on canvas and fiber. Giclee's on canvas and paper also available. Hours: by appt. only. Contact: 803/429-5456 or at (www.alicialeeke.com).

ArtCan Studio & Gallery, 108 Beaufort Street, Chapin. **Ongoing** - Featuring original paintings, handpainted furnishing, and limited and open edition lithographs by Judy Bolton Jarrett. Hours: Thur. & Fri., noon-5:30pm; Sat., noon-4pm or by appt. (call before coming). Contact: 803/345-6588 or at (www.judyjarrettgallery.com).

ART + CAYCE Gallery, 1329 State St., opposite Brookland Cayce High School, Cayce. **Ongoing** - Our gallery hosts local artists from South Carolina showing works in various media. Every show is different and unique and displays work from abstract painting to mixed media assemblages. Currently we are displaying sculpture by Robin Jones and mixed media assemblage/painting by Andrew Norton Webber. One can expect to visit the gallery during the week and experience a calm atmosphere with engaging pieces. Hours: Mon.-Thur., 1-4pm; Sat., 1-4pm & by appt. Contact: 803/765-0838 or at (<http://artpluscayce.blogspot.com/>).

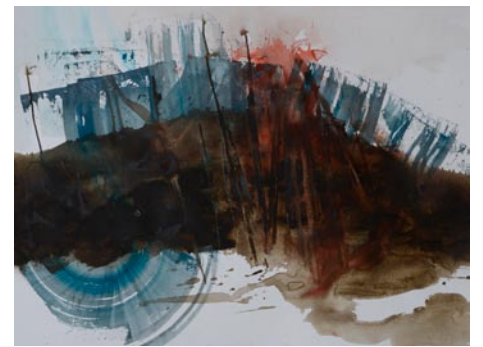
Art Studios in the Historic Arcade Building, 1332 Main Street, at the corner of Washington and Main Streets two blocks from the Statehouse, Columbia. **Ongoing** - Including works by Eileen Blyth (mixed media); Sylvia Potts and Richard Lund (sculptors); Page Morris, Beth West, Suzy Shealy, Walton Selig, Martha Thomas, Jan Swanson, Tish Lowe, Bettye Rivers, Debra Paysinger, Meredith Paysinger, McKenzie Seay and Leah Wimberly (painters). All studios on the main level have glass-fronts so that visitors can see art and the artists at work. Studio hours vary with each artist. Building hours: Mon.-Fri., 8am-6pm or by appt. Contact: Jan Swanson at 803/360-6794, e-mail to (busstop2711@aol.com) or on Facebook.

Artsy Fartsy Art Gallery and Coffee Bar, 906 Knox Abbott Drive, Cayce. **Ongoing** - Featuring art by local artists and cafe and wine bar. We also have MIND GRAVY which is our poetry night every wed 8-10pm. Hours: Wed.-Sat., 7pm-2am. Contact: 803/7084731 or e-mail at (Ladyartnsoul@gmail.com).

Bella Vista Art & Framing, 705 Gervais St., downstairs of City Market Antiques, Columbia. **Ongoing** - Featuring original works of art of varied national artists, regional artists, vintage art, antiquarian engravings and etchings, original photography. Also a Mort Kunstler dealer and large selection of SC artists, giclees, and limited edition prints. And, offering a full service custom framing shop featuring professional, quality framing at below industry prices. Hours: Tue.-Sat., 10am-5:30pm. Contact: 803/765-0808 or e-mail at (bellavistaart@bellsouth.net).

Carol Saunders Gallery, 922 Gervais St., Columbia. **Ongoing** - Featuring fine art objects and works by local artists, including Mana Hewitt, Stephen Chesley, Carol Pittman, Mike Williams, Laura Spong, Heidi Darr-Hope, Judy Hubbard, Jeri Burdick, Clay Burnett, and Eddie Bryan. Hours: M-F, 10am-5:30pm; Sat., 11am-5pm. Contact: 803/256-3046.

City Art, 1224 Lincoln Street, Columbia. **Through Jan. 1, 2016** - "US: A Civil War, Artwork by Dan Smith". Smith's new body of work includes mixed media paintings, as well as photographs and installations inspired by the American Civil War. On May 15, 2014 the artist began his Civil War Travels throughout the United States visiting specific Civil War sites. Many of the sites presented 150 year-old re-enactments. Along with extensive reading, the sites became inspiration for Smith's artworks. Sites like Ft.



Work by Dan Smith

Fisher in Wilmington, NC, the Shenandoah Valley of VA, Columbia, SC, Andersonville, GA, and Lookout Mountain, TN, inform much of the work. **Ongoing** - Featuring works by Jane Aldridge, Jim Arendt, Randolph New Armstrong, Penny Baskin, Jo Dean Bauknight, Robbie Bell, Kimberly Betchman, Tarleton Blackwell, Angela Bradburn, Betty Bramlett, Joe Byrne, Carolita Cantrell, Kathy Casey, Anne Cunningham, Bob Doster, Gerard Erley, Claire Farrell, Amy Fichter, Tim Floyd, Michael Fowler, Teri Goddard, Harriet Goode, Vanessa Grubbs, Randy Hanna, Shelley Hehenberger, Mana Hewitt, David Kessler, Jan Kransberger, Robert Lyon, Rena MacQueen, Doug McAbee, Fred McElveen, Esther Melton, Max Miller, Lee A. Monts, Marge Loudon Moody, Blake Morgan, Bruce Nellsmith, Heather Noe, Susan Nuttall, Patrick Parise, Ann Hightower-Patterson, Leslie Pierce, Carol Pittman, Sylvia Ady-Potts, Alex Powers, Brian Rego, May Reisz, Tom Risser, Peggy Rivers, Cindy Saad, Sara Schneckloth, Ed Shmunes, Wanda Steppe, Nancy Thompson, Teri Tynes, Yisha Wang, Wendyth Wells, Sam Wilkins, Rod Wimer, and Katarina Zaric. This represents a rare opportunity to view a very wide range of acclaimed SC artists at one time. City Art features three distinct gallery spaces. A complete fine artists supply store is located on the lower level. Fine custom designer framing is available at City Art. In addition the Gallery is often host to a variety of events hosted by rental clients. City Art is a wonderful space to enjoy and purchase original art, art supplies, fine framing, take art classes and have wedding receptions, etc. Hours: Mon.-Thur., 10am-6pm; Fri., 10am-5pm, & Sat., 11am-3pm. Contact: 803/252-3613 or at (www.cityartonline.com).

Finleaf Gallery, 2323 Devine Street, Columbia. **Ongoing** - Featuring original artwork by local and regional artists, whose work has been hand-selected for display in our gallery. Hours: Tue.-Fri., 10am-5:30pm & Sat., 11am-3pm. Contact: 803/254-8327 or at (www.finleaf.com).

Fontenay Fine Art, Antiques and Oriental Rugs, 2716 Devine St., Columbia. **Ongoing** - Featuring antique and contemporary fine art in our gallery of fine rugs and antiques. We now offer full-service framing. Hours: Tue.-Fri., noon-5pm & Sat., 10am-6pm. Contact: 803/254-1352 or at (www.fontenaydevine.blogspot.com).

Frameland, 619 Harden St., (Five Points, next to Grouchos Deli), Columbia. **Ongoing** - Featuring local art in Five Points, close to downtown. USC and college art, diploma frames, Columbia and vintage SC prints. Hours: Mon.-Fri., 10am-5:30pm & Sat., 10am-3:30pm. Contact: 803/771-4451.

New Location Gallery West, 134 State Street in West Columbia. **Ongoing** - Gallery West shares in Columbia's creative life with art from around the world and across the centuries. Come and discover early prints and paintings, including work from established as well as emerging artists, all staged with antique furniture and objects designed to make you feel "at home." Fine contemporary craft is likewise incorporated into our comfortable and welcoming surroundings. A feature of the gallery is the unusual and beautifully crafted art jewelry from international, national and regional designers. The gallery also specializes in the unique, offering exquisite objects for every budget. Whether shopping for the home, a holiday or your own heartstrings, you will enjoy art, antiques, and artisan-made objects, just across the Congaree. Hours: Wed.-Sat., 11am-7pm; and Sun. 10am-2pm. Contact: 803/207-9265 or at (www.gallerywestcolumbia.com).

Havens Framemakers and Gallery, 1616 Gervais St., Columbia. **Ongoing** - Exhibiting paintings by local artists: Jamie Blackburn, Diane Gilbert, Betsy Havens, Rob Shaw, Steven Whetstone, James E. Calk and others. Featuring an extensive collection of handcarved museum quality frames. Art and frame restoration. Hours: Mon.-Fri., 9:30am-6pm; Sat., 10am-5pm. Contact: 803/256-1616 or at (www.havensframemakersandgallery.com).

HoFP, 2828 Devine Street, Columbia. **Ongoing** - Featuring original works of art from around the world and around the corner. Hours: Mon.-Fri., 9am-5:30pm; Sat., 10am-5pm, & by appt.. Contact: 803/799-7405 or at (www.hofpgallery.com).

continued on Page 40