

# NC Commercial Galleries

continued from Page 58

is the living embodiment of a new generation of DIY punk artists. At only 25-years old Sour Steve is a master of all trades from hand-crafted, surreal, tongue-in-cheek collage bits to writing, recording, and producing three full length punk rock albums from his studio apartment in Lenoir NC, Sour Steve is a quintessential DIY artist of our time. **Jan. 7 - 31** - Featuring works by acrylic painter Cathy Vaughan of Hudson NC. Vaughan is known for brilliant abstract paintings as well as colorful landscape paintings that sometimes have hidden characters to be found. She has an anything goes attitude with her abstract paintings which often are about the human experience. Her landscapes are often inspired by the art of Bob Ross but with brighter bolder colors. This time she has painted some larger canvases than before. Hours: 24/7. Contact: David Mench by e-mail at (Wagglestone@yahoo.com).

## Wadesboro

**Olde Mill Gallery & Studios**, Lockhart-Taylor Center, 514 N. Washington St., Wadesboro. **Ongoing** - At the gallery visitors will see artwork by regional artists which includes: original paintings in oil, acrylic & watercolor, that range from landscapes to abstracts; photography; works in copper and copper repousse; ceramic creations, custom sculptured and functional; art glass jewelry, jewelry made from beads of Swarovski crystal; hand-stitched quilts of exquisite designs; hand painted goblets, pitchers and vases; wood sculptures and turnings, and more. Hours: Mon.-Thur., 10am-5pm; Fri., 10am-3pm or by appt. Contact: 704/272-5464 or at (www.oldemillgallery.org).

## Waxhaw

**Stewart's Village Gallery**, 116 McDonald St., Waxhaw. **Ongoing** - Featuring pottery by Bill Stewart, as well as works by over 300 other artists including both decorative and functional handmade pieces. The gallery is filled with pottery, jewelry, wrought iron, garden accents, decorative whimsy and so much more. Hours: Mon.-Sat., 10am-5pm & Sun., 1-5pm. Contact: 704/843-5638 or at (www.stewartsvillagegallery.com).

## Waynesville

**Balsam Ridge Gallery**, 44 North Main Street, Waynesville. **Ongoing** - Fine art gallery featuring paintings of Western NC mountain vistas and beyond. Hours: daily 11am-6pm, but call ahead. Contact: 828/234-1616.

**Cedar Hill Gallery**, 196 N. Main Street, Waynesville. **Ongoing** - Featuring the art of Gretchen Clasby and 83 incredible artisans. Hours: Mon.-Sat., 10:30am-5:30pm. Contact: 828/421-6688 or at (https://www.cedarhillstudio.com/).

**Jo Ridge Kelly Fine Art**, a gallery and teaching studio, 136 N. Main Street, Waynesville. **Ongoing** - Featuring the painting of Jo Ridge Kelly. Hours: Thur.-Sat., noon-6pm and Sun.-Wed., by chance or appt. Contact: 828/226-0549 or at (www.JoKelley.com).

**Moose Crossing's Burl Wood Gallery**, 101 N. Main Street, Waynesville. **Ongoing** - Featuring rustic Burl furniture with an elegant finish. Two generations of Metzgers, source, design and craft burl. We are fortunate to have talented craftsmen working with us. It is our pleasure to coordinate efforts as a team. The focus is on the end product as an art piece. Hours: Mon.-Sat., noon-5pm or by appt. Contact: 828/452-2550 or at (https://burl-gallery.com/products/burl-wood-sculpture).

**T. Pennington Art Gallery**, 15 N. Main Street, Waynesville. **Ongoing** - Featuring pencil drawings of local scenery, and landmarks by Teresa Pennington, including originals, prints and gift items. Also framing is available. Hours: Mon.-sat., 10am-5pm. Contact: 828/452.9284 or at (www.tpennington.com).

**The Jeweler's Workbench**, 80 N. Main St., Waynesville. **Ongoing** - Specializing in fine hand-crafted jewelry, custom design and repair, limited edition watches and jewelry boxes. Featuring award-winning artists of the Great Smoky Mountains and from across the country. Hours: Mon.-Sat., 10am-5:30pm. Contact: 828/456-2260.

**Twigs & Leaves**, 98 N. Main Street, Waynesville. **Ongoing** - Featuring the nature-related porcelain works with leaves by Kaaren Stoner, as well as other works by regional artists and craftsmen. Hours: Mon.-Sat, 10am-5:30pm. Contact: 828/456-1940 or at (www.twig-sandleaves.com).

## Weaverville

**Mangum Gallery**, 16 North Main Street, Weaverville. **Ongoing** - Featuring functional and decorative pottery dinnerware. Hours: Mon.-Fri., 9am-5pm and Sat., 10am-4pm. Contact: 828/645-4929 or (www.mangumpottery.com).

**Miya Gallery**, 31 N. Main St., Weaverville. **Ongoing** - The gallery is a new and refreshing addition to the WNC art scene. We exhibit work of over 50 artists: fine jewelry, clay, wood, glass, metal, fiber, photography and two dimensional art. Hours: Tue.-Fri., 10am-6pm; Sat., 10am-5pm & Sun., noon-4pm. Contact: 828-658-9655 or at (www.miyagallery.com).

## West Jefferson/Jefferson

**Acorn Gallery**, 103 Long St., West Jefferson. **Ongoing** - Featuring original works by award winning and nationally exhibited artist Raney Rogers, including wildlife and landscape paintings and prints. Hours: Tue.-Fri., 11am-5pm & Sat., 11am-2pm. Contact: 336/246-3388 or at (www.acorngallery.com).

**Ashe Custom Framing & Gallery**, 105 S. Jefferson Ave., West Jefferson. **Ongoing** - Featuring a varied selection of originals and prints by local and regional artists. Also, a wide array of pottery and handcrafted wooden vases. Hours: Tue.-Fri., 10am-5pm & Sat., 10am-2pm. Contact: 336/246-2218.

**Broomfields Gallery**, 414 E. 2nd St, (across from the post office), West Jefferson. **Ongoing** - Featuring an exhibition of works by NC and SC artists in various mediums in a setting of quality antiques. Hours: Tue.-Sat., 11am-5pm. Contact: 336/846-4141 or at (www.broomfieldsgallery.com).

**CatchLight Gallery**, 118 N Jefferson Avenue, West Jefferson. **Ongoing** - The CatchLight gallery is dedicated solely to the art of photography. In the Spring of 2012, photographer Nicole Robinson decided to create a space where talented photographers would have an opportunity to display and sell their work. A beautiful gallery space grew from a dream into a wonderful reality, evolving into a haven which became available to both the photographers and the viewing public in the arts district of downtown West Jefferson, NC. Hours: Mon., Thur., Fri., & Sat., 11am-5pm & Sun., 11am-4pm. Contact: 336/846-1551 or at (www.CatchLightGallery.net).

**Prack Studio / Sculpture Garden**, 431 Sunnyside Park Road, Jefferson. **Ongoing** - Featuring sculptures by Mary-Ann Prack. Hours: open by appt only. Contact: 828/406-7046 or at (www.prackart.com).

**Stephen Shoemaker Studio**, 113 S. Jefferson Ave., West Jefferson. **Ongoing** - Featuring original works by watercolorist Stephen Shoemaker. Specializing in historic landscapes and paintings of places and events in/of Ashe County and the area. The "Virginia Creeper" train series is particularly popular. Hours: Mon-Fri., 10am-5pm or by chance. Contact: 336/246-3401.

## Wilmington

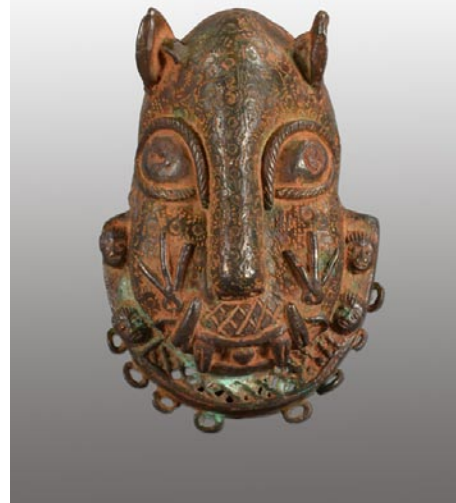
**Acme Art Studios**, 711 N. 5th Ave., downtown Wilmington. **Ongoing** - Featuring works by Allan Nance, Angela Rowe, Angie Sinclair, Anna Kennedy, Chaz Manacsca, Dick Roberts, Dumay Gorham, Fritz Huber, Gary Breece, Grey Pascal, Karen Crouch, Kristen Crouch, Marshall Milton, MJ Cunningham, Nicolle Nicolle, Pam Toll, Mark Weber, Arrow Ross, and Mike Johnson. Hours: are by appt. only. Contact: Dick Roberts at 910/232-0027, e-mail (dickdow64@gmail.com) or Angela Rowe at (arowe@ec.rr.com) or at (www.acme-art-studios.com).

**Art in Bloom**, 210 Princess Street, Wilmington. **Through Jan. 9** - "The Holiday Art Exhibit & Sale". A reception will be held on Dec. 17, from 6-9pm. Featuring works by over 30 local artists with an abundance of creativity and gift giving ideas for this Holiday Season. **Through Jan. 9** - "Jeff Chase: Night", guest photographer. A reception will be held on Dec. 17, from 6-9pm. **Ongoing** - The gallery focuses upon international and national artists including many artists from the Bloom family and local favorites such as Elizabeth Darrow (paintings) and Matthew Leavell (sculpture). Guests artists are featured every 3-4 months. Visitors will find a mixture of traditional and contemporary paintings, drawings, photography, sculpture, jewelry, ceramics, fabric, and objects found during the renovation of the building: horse shoes, bottles, papers, wagon parts, utensils, glass, and ceramics (c.

1910-1920). Extended Holiday Hours: Mon.-Thur., 10am-4pm; Fri. & Sat., 10am-5pm; and Sun., noon-4pm. Contact: 484/885-3037 or at (https://aibgallery.com/).

**Beck Fine Art**, 545 Castle Street, Wilmington. **Ongoing** - features some of the best in national talent for representational and abstract art. Being the main gallery and home of award-winning artist, Dan Beck, the gallery not only represents some of Dan's best work but other artists with exceptional talent and accomplished art careers. Hours: Tue.-Sat., 11am-5pm. Contact: 910/264-2392 or at (www.beckfineart.com).

**Bottega Art & Wine Gallery**, 208 N. Front St., Wilmington. **Ongoing** - Featuring works by regional and international artists in a variety of media. Hours: Tue.-Wed., 1-10pm and Thur-Sat., 1pm-midnight. Contact: 910/763-3737 or at (www.bottegapottery.com).



Work from Charles Jones African Art

**Charles Jones African Art**, 311 Judges Road, Unit 6-E, Wilmington. **Ongoing** - A gallery dedicated to the traditional arts of West and Central Africa, with over 35 years experience in building fine collections for collectors and museums. Inquiries are welcome. Consultation, research and appraisal services available for individuals, estates and institutions by ISA certified appraiser, Maura Kropke. Exhibitions arranged and curated with essays by major scholars. Hours: Mon.-Fri., 7:30am-4:30pm. Contact: 910/794-3060 or at (https://charlesjonesafricanart.com/).

**Checker Cab Gallery**, 130 N. Front Street, Suite 102, Wilmington. **Ongoing** - The gallery is a full-service gallery featuring abstract and representational artwork serving collectors of all levels. It is downtown Wilmington's most dynamic gallery featuring original artwork by regional emerging and established artists, offering the public the opportunity to get to know and understand the artists directly. Hours: Tue.-Thur., noon-7pm; Fri.-Sat., noon-9pm; & Sun., noon-7pm. Contact: 919/270-1711 or at (www.checkercabproductions.com).

**ERA 20th Century Furniture and Art Gallery**, 523 South 3rd St., Wilmington. **Ongoing** - Inviting emerging artists of all sorts, to fill the quiet space with cutting edge art that not only is pleasant to view, but also thought-provoking. Unique modern furnishings from the mid-20th century complement the contemporary art. Hours: Wed.-Sat., 11am-5pm or by appt. Contact: 910/612-0542.

**Gallery Citrine**, 17 S 2nd Street, Wilmington. **Ongoing** - Featuring works by BJ Grimmer, PD Chisholm, Kathy Schrum Peck, Nancy Lang Miller, Brooke Eagle, Deb Williams, Meroe Wheatley, Sue Cunningham, Chris Pfund, Donna Launey, and Robin Jones. Hours: Thur.-Sat., 11am-6pm or by appt. Contact: e-mail to (gallerycitrine@gmail.com) or at (https://gallerycitrine.com/).

**Janet B. Sessoms Studio@ the ArtWorks**, 200 Willard Street, Wilmington. **Ongoing** - Featuring works by Janet B. Sessoms. Hours: call for hours. Contact: 910/840-0208, e-mail at (jbsessoms47@ec.rr.com) or at (www.janetb-sessoms.com).

**New Elements Gallery**, 271 North Front Street, Wilmington. **Through Jan. 17** - "36th Annual Holiday Show". **Ongoing** - Featuring works by regional and nationally recognized artists. We offer a wide variety of contemporary fine art and craft, including paintings, sculpture, ceramics, glass, fiber, jewelry and wood. Hours: Tue-Sat., 11am-6pm or by appt. Contact: 910/343-8997 or at (www.newelementsgallery.com).

**Port City Pottery & Fine Crafts**, at The Cotton Exchange, 307 North Front Street, Wilmington. **Ongoing** - Celebrating ten years in business, Port City Pottery & Fine Crafts, in the historic Cotton Exchange in downtown Wilmington, is the first gallery in Wilmington dedicated exclusively

to local, handmade, one-of-a-kind, three-dimensional art and craft by jury-selected coastal North Carolina artisans. We present decorative and functional works in clay, fiber/textiles, gourds, baskets, jewelry, mixed media, glass and wood in a beautiful setting in this early 20th century historic building. Handmade objects, whether held, worn, or displayed, enrich our lives by connecting us with our humanity, creativity, and our history. It is evident when you enter Port City Pottery & Fine Crafts that all of the Gallery members are pursuing not only art but their passion. Hours: Mon-Sat., 10am-5:30pm & Sun. noon-4pm. Contact: 910/763-7111 or at (www.portcitypottery.com).

**SALT Studio & The Gallery at SALT Studio**, 805 N. 4th Street, inside the historic Modern Baking Building in the heart of the Brooklyn Arts District - enter through glass door under the building overhang, the gallery is at the end of the hallway Wilmington. **Ongoing** - The Gallery at SALT Studio is Wilmington NC's only fine art photography gallery. The gallery exhibits fine art photography by national, international, and local artists. The gallery strives to bring thought provoking, aesthetic, photo-based works of art to Wilmington. All of our exhibition openings are on the Fourth Friday Gallery Nights each month as administered by The Arts Council of Wilmington. SALT Studio is a photography studio that offers high caliber, personalized photographic services with a unique edge to Wilmington. Hours: Mon.-Fri., 10am-6pm and Sat., noon-5pm. Call prior to coming to make sure we are open and not on location shooting a job. Contact: 910/367-5720 or at (http://Salt-StudioNC.com).

**Sheffield Art Studio and Gallery**, 802-A N. 4th Street, Brooklyn Arts District, Wilmington. **Ongoing** - Featuring original oil and watercolor paintings by Sarah Sheffield. Exhibits changing monthly. We stock my full line of mini gift boutique paintings as well. The shop will soon carry prints and note cards in 2017. Hours: Fourth Friday for the Wilmington Art Walk from 6-9pm or by appt. Contact: 919/815-2097 or e-mail at (sarah@sheffieldartstudio.com).

**621N4th Gallery**, 621 North 4th Street, Wilmington. **Ongoing** - The gallery is an artist-run gallery, studio and office space located in the heart of downtown Wilmington's Brooklyn neighborhood. The gallery location provides established and emerging artists the opportunity to exhibit and sell their work in a professional manner. Hours: Mon.-Thur., 1-5pm & 4th Friday, 6-9pm or by appt. Contact: 910/763-2012 or at (http://621n4th.com/index.php).

**Spectrum Art & Jewelry**, @ The Fourm, 1125-H Military Cutoff Rd., Wilmington. **Ongoing** - Featuring works by over 100 regionally and nationally renowned artists in a variety of media. Hours: Mon.-Sat., 10am-6pm. Contact: 910/256-2323 or at (www.spectrumartgallery.com).

**The Art Factory**, 21 Surry Street, Wilmington. **Ongoing** - We are located in the warehouse district on the edge of beautiful Historic Downtown Wilmington, North Carolina. In addition to our retail galleries, the Art Factory Gallery houses a number of studios for working artists and a Wine Bar featuring distinctive Yadkin Valley North Carolina wines, available by the glass while you enjoy the galleries. Hours: call about hours. Contact: 910/399-3793 or visit (https://www.facebook.com/ArtFactoryGallery/).

**The ArtWorks**, 200 Willard Street, Wilmington. **Ongoing** - The ArtWorks is an art village providing art studios, gallery space, and an event venue; fostering a creative environment for artists, educational opportunities, and enhancement of the Wilmington community, through art. Our Mission is to enhance the community, assist the artist, contribute to the revitalization of downtown Wilmington, to preserve Wilmington's commercial landmarks, and to increase the livelihood of local artists and provide a place to create and display all types of art. Hours: 2nd & 4th Saturdays, 10am-3 or by appt. Contact: 910/352-7077 or at (http://www.theartworks.co/).

**The Golden Gallery**, @ The Cotton Exchange, 307 N. Front St., Wilmington. **Ongoing** - Featuring works by John W. Golden and Mary Ellen Golden. Hours: Mon.-Sat., 10am-5:30pm & Sun., 1-4pm. Contact: 910/762-4651 or at (www.thegoldengallery.com).

**Three Hounds Gallery**, 29 S. Front St., Wilmington. **Ongoing** - Featuring works by Wayne McDowell, Jeff Chase, Dick Roberts, Shawn Best, Kristin Gibson, Fritz Huber, Joanne Geisel, Christa Sylvester, Brian Evans, Mark Gordon, Rex Miller, and jewelry by Emily Parker. Hours: Tue.-Thur., 11:30am-5:30pm; Fri. and Sat., 11:30am-7:30pm & Sun., noon-3pm. Contact: 910/815-3330 or at (www.threehoundsgallery.com).

continued on Page 60