

# NC Institutional Galleries

continued from Page 53

anxiety of 2020 and so far in 2021, we all need to treat ourselves or someone we know to something nice this fall. We have just the thing. "Retail Therapy" is a temporary show here at the North Carolina Pottery Center where you can do just that. See a piece in the show you like? Buy it and take it home right then. Featuring work by Bristow Pottery (Asheboro), David Cole Pottery (Oak Ridge), Doe Ridge Pottery (Boone), JLK Jewelry (Seagrove), O'Keefe Pottery (Pittsboro), O'Quinn Pottery (Seagrove), Red Hare Pottery (Seagrove) & Benjamin Burns (Seagrove), Salvaterra Pottery (Weaverville), Thomas Pottery (Seagrove), and Windsong Pottery (Denton). **Through Jan. 15, 2022** - "Abigail Flynt & Olutomi Balogun Artists-in-Residence Show". Come check out the creative pieces made by the North Carolina Pottery Center's two talented current artists-in-residence - Abigail Flynt & Olutomi Balogun! Almost all of their pieces will be available for purchase and can be taken home immediately. Abigail Flynt was born near the rice fields of rural southwest Arkansas. Working as a farm hand during the summers, she developed a love for the earth and soil. She graduated Cum Laude with a B.F.A from Southern Arkansas University as a first generation college student in 2015. Olutomi Balogun says, "Paint and clay, because of their physical properties, have always been media I felt I could effectively express my thoughts and feelings through. Both art forms are forgiving in the sense that no mistake is ever permanent. Each step in the creation process offers the choice to accept what is there or to begin again and discover something new through the composition and conceptual process. My artwork draws from my personal life; I believe creating art influenced by life experiences creates an opportunity to connect with the viewer intimately." **Ongoing** - Featuring permanent and changing exhibits on the history of North Carolina pottery, "The North Carolina Pottery Tradition" and "Seagrove Area Pottery". The Center also offers information on activities, maps and information about the potteries located in the Seagrove area and across the state. A display of representative works from more than 90 area potteries is also offered. Hours: Tue.-Sat., 10am-4pm. Contact 336/873-8430 or at ([ncpotterycenter.org](http://ncpotterycenter.org)).



Red Star Ornament

**STARworks Center for Creative Enterprise**, 100 Russell Drive, just seven miles south of Seagrove in Star. STARworks is a project of Central Park NC, a 501-(c)(3) not for profit organization based in rural central North Carolina. The mission of CPNC is to grow a new rural economy based on the sustainable use of the natural and cultural resources of the region. **Dec. 4 - 18** - "STARworks Holiday Ornament Sale". Thousands of handblown glass ornaments in a variety of shapes and colors will be available at the STARworks Holiday Ornament Sale. Online sales begin Dec. 6 at ([www.STARworksNC.org](http://www.STARworksNC.org)). Ornaments and other holiday themed glass decorations are handcrafted by STARworks artists, interns and resident artists. In addition to the familiar ball ornaments, STARworks glassblowers have brought back the popular star ornaments, candy canes, icicles, birds and pendant ornaments for this holiday season. There will also be a large variety of angel, snowman and tree sculptures. **STARworks Businesses: STARworks Glass** is a public access glass studio that offers rental space for glass artists, classes and workshops for the general public, a resident artist and internship program, and high school and college glass curriculum. In addition to fundraisers

like our Pumpkin Patch and Holiday Ornament Sale, STARworks Glass also holds free demonstrations on the second Thursday of each month at Hot Glass Cold Beer. **STARworks Ceramics** uses native NC wild clays to produce clay bodies that are manufactured with a filter press on site. We also sell pottery supplies and equipment. In addition to our STARworks clays, we offer both Highwater and Standard clays, and tools and equipment from Shimpo, Cone Art Kilns, Mudtools, AMACO, Kemper Tools and Orton. **STARworks Clay Studio** offers a residency program for ceramic artists. Our facilities allow for large workshop spaces placed side by side, supporting a collaborative and energetic educational environment. In addition to the residency program, STARworks Clay studio offers classes and workshops for adults. STARworks is also home to **Wet Dog Glass**, the most trusted and dependable equipment maker and consultant for glass artists and craftspeople worldwide. **School House Gallery, Ongoing** - The gallery is filled with a selection of works from artists and artisans alike, bringing hand crafted wares into a new light. From one of a kind tableware crafted from locally mined clay paired with handwoven placemats, to simple yet elegant glass goods designed with our utilitarian ideals in mind, our functional collections are a must have for any home. Our gallery also features a selection of sculptures that gray the lines between want and need. Whether your desire is to capture an experience with one of our artists or our team, decorate your home with memories of your travels, or to treat yourself and others to a unique handmade gift, we have something for everyone to make your time here unforgettable. Gallery Hours: Mon.-Sat., 9am-5pm. **STARworks Café & Taproom** - Featuring Espresso, Iced & Frozen Coffee, Coffee, Tea, Cocoa, Smoothies, Beer & Wine, Soda, Bottled Water, Snapple, Snacks, and Pastries. And, live music some nights - visit (<https://www.starworksncc.org/caf-taproom>) for the schedule. Hours: Mon.-Wed., 8am-9pm & Thur.-Sat., 8am-10pm. STARworks General Hours: Mon.-Sat., 9am-5pm. Contact: call 910/428-9001 or at ([www.starworksncc.org](http://www.starworksncc.org)).

## Shelby

**Cleveland County Arts Council**, 111 S Washington St, Shelby. **Through Dec. 23** - "Handmade for the Holidays". Gift Gallery offers a chance to keep your holiday shopping unique & LOCAL! Artwork includes handcrafted jewelry, ornaments, jams, salsas, ceramic berry and yarn bowls, brie bakers, cutting boards, coasters, designer coffee mugs, felted baskets, hats, scarves, journals, paintings, mosaics, lamps, wall pockets, holiday cards, potholders & pens. Hours: Mon.-Fri., 10am-4pm & Sat., 10am-2pm. Contact: 704/484-2787 or at (<https://www.ccartscouncil.org/>).

## Siler City

**North Carolina Arts Incubator Gallery**, 223 N Chatham Ave., Siler City. **Ongoing** - Featuring the handcrafted work of over 30 Incubator and regional artists in a variety of mediums including painting, pottery, stained and fused glass, fabric art, cards, photography, wood, jewelry, metal, baskets and more. There is a broad range of items and prices. Hours: Mon.-Sat., 10am-5pm; & 3rd Fri., 10am-9pm. Contact: 919/663-2072 or at ([www.ncartsincubator.org](http://www.ncartsincubator.org)).

**PAF Gallery**, 223 N Chatham Ave., Siler City. **Ongoing** - A gallery featuring works by local and regional artists. Hours: 3rd Fri. 6-9pm. Contact: 919/663-2072 or at ([www.ncartsincubator.org](http://www.ncartsincubator.org)).

## Southern Pines

**Campbell House Galleries**, Arts Council of Moore County, 482 E. Connecticut Ave., Southern Pines. **Through Dec. 18** - "Martha Dodd, Morgen Kilbourn, Meridith Martens". Hours: Mon.-Fri., 9am-5pm. Contact: 910/692-4356 or at ([www.mooreart.org](http://www.mooreart.org)).

## Southport

**Franklin Square Gallery**, 130 E. West St., Southport. **Through Dec. 18** - "Block & Chisel: Equine & More," featuring works by Martha Dodd, Morgen Kilbourn, and Meridith Martens. **Ongoing** - Works by members of the Associated Artists of Southport. Hours: Mon.-Sat., 10am-5pm. Contact: 910/457-5450 or at ([www.franklinsquaregallery.com](http://www.franklinsquaregallery.com)).

## Spruce Pine

**TRAC Arts Center**, Toe River Arts Council, 269 Oak Avenue, Spruce Pine. **Spruce Pine Gallery, Through Dec. 31** - "Studio Tour Preview Exhibi-

tion". **Ongoing** - Toe River Arts will feature artist demonstrations and continue to sell artist's work in the gift shop. Hours: Tue.-Sat., 10:30am-5pm. Contact: 828/682-7215 or at ([www.toeriverarts.org](http://www.toeriverarts.org)).

## Sylva

**Gallery One**, Home of the Jackson County Visual Arts Association, 604 West Main Street, Sylva. **Ongoing** - The gallery is home to over 20 artists local to the area. Gallery 1 is a not for profit gallery operated as a club to provide a space for professional and emerging artists to share their artistic endeavors, display works sold to help support their vocation. Hours: Thur.-Fri., 11am-3pm and Sat., noon-4pm. Contact: Tim Lewis 828/337-3468 or James Smythe 828/507-4248.

## Tryon

**Tryon Arts and Crafts School**, 373 Harmon Field Rd., in the old Tryon Middle School, Tryon. **Gallery, Through Dec. 21** - "TACS' Annual Handcrafted Holiday Showcase". **Gift Shop, Ongoing** - Gift Shop features juried works by regional artisans to selected work produced by our instructors and students. Hours: Mon.-Fri., 9am-5pm & Sat. 9am-1pm. Contact: 828/859-8323 or at ([www.tryonartsandcrafts.org](http://www.tryonartsandcrafts.org)).

**Upstairs Artspace**, (Celebrating 40 Years) 49 South Trade Street, Tryon. **Currently Closed for Re-Construction**. Hours: Tue.-Sat., noon-5pm. Contact: 828-859-2828 or at ([www.upstairsartspace.org](http://www.upstairsartspace.org)).

## Valdese

**Valdese Heritage Arts Center**, 146 Main Street West, Valdese. **Ongoing** - The center offers a great selection of unique gifts on exhibit and for sale, including, but not limited to original paintings, pottery, needlework, wood-carvings, hand crafted furniture, ceramic sculptures, stained glass, photography, jewelry, floral arrangements greeting cards, quilts and home made soap. Hours: Mon.-Fri., 9am-5pm & Sat., 11am-3pm. Contact: 828/874-1849 or at (<http://vhac.webs.com>).

## Washington

**Arts of the Pamlico**, 150 West Main Street, Washington, NC. **Through Jan. 8, 2022** - "57th Annual Fine Arts Show," juried by Catherine Walker Bailey. Hours: call ahead. Contact: 252/946-2504 or at (<https://www.artsofthepamlico.org/>).

**River Walk Gallery and Arts Center**, 139 W. Main Street, Washington. **Ongoing** - All work is done by local artists and has to be juried into the gallery. The gallery includes watercolor, oil, and acrylic paintings, photography, pottery, mixed media, fiber arts, jewelry, wood work, stained glass, and books written by local authors. Hours: Mon.-Sat., 10:30am-5pm. Contact: 252/974-0400.

## Waynesville

**Little Gallery on Church Street**, 37 Church Street, Waynesville. **Ongoing** - Featuring monthly exhibits by regional arts. Sponsored by the Haywood County Arts Council. Hours: Mon.-Fri., 9am-5pm. Contact: 828/452-0593 or at ([www.haywoodarts.org](http://www.haywoodarts.org)).

**The Haywood County Arts Council's Gallery 86**, 86 N. Main Street, Waynesville. **Through Dec. 31** - "Small Works", give the gift of the creative spirit. The Small Works exhibit is a gift-themed exhibition that encourages buying art for holiday gifts. Hours: call. Contact: 828/452-0593 or at ([www.haywoodarts.org](http://www.haywoodarts.org)).

**The Museum of North Carolina Handicrafts**, 307 Shelton Street, corner of US 276 So. and Shelton Street, Waynesville. **Ongoing** - Featuring the handicrafts of North Carolina in the historic Sheldon House. Hours: Museum hours change seasonally, call 828/452-1551.

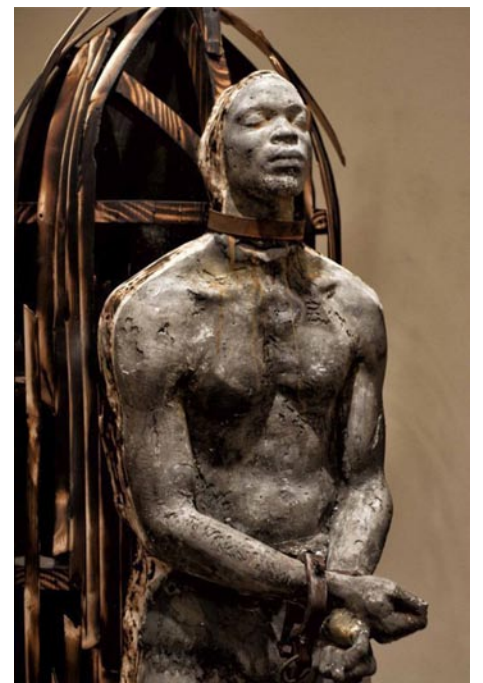
## Wentworth

**Dan River Art Market & Gallery**, 1122 NC Hwy. 65, Wentworth. **Ongoing** - The gallery offers art and craft by local artists and 6 gallery exhibits throughout the year, workshops and lectures. Hours: Thur., 10am-4pm; Fri., 11am-2pm; and by appt. Contact: 336/349-4039.

## Wilmington

**ACES Gallery**, Arts Council of Wilmington and New Hanover County, 221 N Front Street, Suite 101, Wilmington. **Through Dec. 17** - "Seen and Unseen". Hours: Mon.-Fri., 10am-5pm. Contact: 910/343-0998 or at ([www.ArtsCouncilofWilmington.org](http://www.ArtsCouncilofWilmington.org)).

**Louise Wells Cameron Art Museum**, @ intersection of Independence Blvd. & South 17th Street, Wilmington. **Through Jan. 31, 2022**



Work by Stephen Hayes

- "The Shadow We Create". The exhibition raises questions about societal prescriptions, race, servitude, fear, and the consequences of not speaking through compelling works by artists Mary Bowron, Willie Cole, and Jan-Ru Wan. The exhibition is named after Jan-Ru Wan's stunning work "The Noise We Make" and "The Shadow We Create", an assemblage of hundreds of rusted bells rendered silent by immersion in wax. "The Beauties", Willie Cole's full-scale prints are pulled from blackened crushed and hammered ironing boards. With titles including "Bessie", "Carolina", "Jonny Mae" and "Jane", each print is named for a woman in Cole's family. Simultaneously they reference servitude, beauty, oppression, and darkened holds of slave ships. "Shadow" features a haunting installation of "Silent Witness", a series by Mary Bowron populated by androgynous pit-fired ceramic heads. Some are smothered in thick wax, others branded with soot from the fire of their birth, with all featureless where a mouth once was, or may still be. "Shadow" addresses fear of speaking the truth amidst racial, social, political and economic unease. This exhibition asks the viewer to contemplate ways in which silence is forced and silence is broken. **Through Jan. 31, 2022** - "Pinkie's Memories," a new exhibition from North Carolina artist Pinkie Strother. Strother re-creates her childhood memories of growing up the fourth of nine siblings in rural Maryland in the 1950s and 1960s through mixed media dioramas. These miniature buildings and rooms on a 1 inch scale offer a connection to the past through the recreation of the houses, churches, schools, and libraries of Pinkie's memories. Strother received formal training in art from Bowie State University where she studied to become a teacher and a MFA from the Maryland Institute College of Art. **Through Mar. 20, 2022** - "Stephen Hayes: Voices of Future's Past". In conjunction with the unveiling of "Boundless", a public sculpture honoring the United States Colored Troops by artist Stephen Hayes, CAM is thrilled to present a solo exhibition of his powerful work. Born in Durham, NC, Hayes is the 2020 recipient of the 1858 Contemporary Southern Art Prize. Hayes is a creator who works with a variety of mediums - sculpture, casting, knitting, woodcuts, video, and audio - to explore issues of race and economics in the United States. Cash Crop features 15 life-size concrete statues chained to a pallet, representing the 15 million people who were transported as slaves from Africa to America. "Voices of Future's Past" explores the legacy of growing up black in America. Both works invite the viewer to participate, bringing a new depth to the experience of viewing art. **Pancoe Art Education Center, Exhibition Cases, Ongoing** - View some of the Seagrove and contemporary pottery from the museum's permanent collection in the cases. These include the works of resident artist Hiroshi Sueyoshi, Ben Owen III and Jugtown Pottery among other works. Admission: Yes. Hours: Tue.-Sun., 10am-5pm and Thur. till 9pm. Contact: 910/395-5999 or at ([www.cameronart-museum.org](http://www.cameronart-museum.org)).

**ALTERNATE ART SPACES** - Wilmington **Airlie Gardens**, 300 Airlie Road, Wilmington. **Ongoing** - Located two miles west of Wrightsville Beach in Wilmington, North Carolina, Airlie Gardens encompasses 67 acres of walking paths, a freshwater lake, and formal gardens that showcase seasonal blooms, mighty live oaks, historic structures, and contemporary sculpture. Airlie is a member of the North Carolina Birding Trail, and it's diverse ecosystems provide unique habitats for a variety of colorful wildlife. Discover what makes Airlie Gardens a premiere garden of the South and a prime destination spot for garden and nature lovers from around the world. Come discover the beauty. Admission: Yes. Hours: Tue.-Sun., 9am-5pm Contact: 910/798-7700 or at ([www.airliedgardens.org](http://www.airliedgardens.org)).

continued on Page 55