

NC Institutional Galleries

continued from Page 35

ty Arts Council. **Sister Galleries & Suntrust Gallery, Through Jan. 17** - "The Life and Art of Charles M. Schulz". Charles Monroe Schulz brightened the world for 50 years with his Peanuts comic strip, which debuted October 2, 1950. With Snoopy, Charlie Brown, and the rest of the lovable Peanuts gang, Schulz explored the emotional territory of friendship, disappointment, faith, and tolerance. He was an artist and a storyteller who transformed images of everyday life into art that captured the humor, vulnerability, and dignity of the human spirit. Through Peanuts, Schulz connected the world with his drawings and stories. "The Life and Art of Charles M. Schulz" explores Schulz's personal history and his role as the sole inspiration and artistic talent behind Peanuts and its unique cast of characters. Schulz once proclaimed, "It seems beyond the comprehension of people that someone can be born to draw comic strips, but I think I was." **Ongoing** - We are committed to shaping the cultural identity of Alamance County by making art a tangible presence in the lives of its citizens. We strive to enhance the quality of life by engaging people in a diverse array of art through the delivery of programming and education, and through the provision of facilities, advocacy, promotion, and funding. **Ongoing** - Picasso's Gift Shop, located in the Captain White House, promises unique finds of local, regional, and international art. The beautiful arts and craft items sold in the store help support the artist in the community. Featuring a wide variety of art, pottery and glass. Admission: free. Hours: Mon.-Sat., 9am-5pm. Contact: 336/226-4495 or at (www.alamancearts.org).

Albemarle

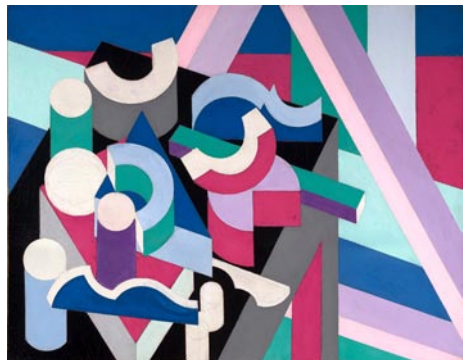
Falling Rivers Gallery, 330-N Second Street, Albemarle. Through Jan. 4 - "From Our Hands... Holiday Craft Show". One stop shopping for all your holiday gifts. Support local artists by purchasing unique handmade items for all of your friends, family and clients. **Ongoing** - The gallery is a cooperative venue of the Stanly Arts Guild. Member staffed, this gallery offers the very best in local art and crafts including oil and watercolor, photography, pottery and ceramic art, jewelry, native American art, gourd sculpture and much more. Hours: Tue.-Fri., 10am-5pm; Thur. till 6:30pm & Sat., 10am-4pm. Contact: 704/983-4278 or at (www.fallingrivers-gallery.com).

Apex

Throughout the downtown area of Apex, Through Mar. 2025 - "4th Annual Apex Sculpture Walk". This exhibition offers works by established and emerging professional artists on display throughout the heart of beautiful downtown Apex. For further info visit (<https://www.apexnc.org/1642/Apex-Sculpture-Walk-2024-2025>).

The Halle Cultural Arts Center, 237 North Salem Street, Apex. Main Gallery, Jan. 6 - Feb. 2 - "Hanging by a Thread: Artist Retrospective," featuring works by Jenny Eggleston. A reception will be held on Jan. 10, from 6-8pm. This exhibition features a career-spanning selection of Eggleston's vibrant and thought-provoking works, highlighting her unique approach to color, form, and storytelling. Known for her evocative abstract pieces, harrowing socio-political paintings, and innovative use of mixed media, Eggleston's career has captivated audiences with its depth and originality for decades. Join us for an evening of artistic exploration, with insights into her creative journey and a chance to engage with her influential body of work. Hours: Mon.-Fri., 9am-6pm & sat., 9am-1pm. Contact: 919/249-1120 or at (www.apexnc.org).

Asheville Area



Patrick Henry Bruse (American, 1881-1936), "Peinture/Nature Morte," circa 1924, oil and pencil on canvas. Courtesy of the Thomas H. and Diane DeMell Jacobsen PhD Foundation.

Asheville Art Museum, 2 South Pack Square at Pack Place, Asheville. Explore Asheville Exhibition Hall, Through Feb. 20 - "American Made: Paintings and Sculpture from the DeMell Jacobsen Collection". The exhibition features over 80 paintings and sculptures. Though many objects in the exhibition have been on view at

other museums, ranging from the Metropolitan Museum of Art to the Smithsonian American Art Museum, this exhibition showcases the best of the DeMell Jacobsen Collection brought together in one location. "American Made" provides an in-depth look at the evolution of American creativity from the Colonial era to the early 20th century. The highlights include portraits by masters like Benjamin West, Thomas Sully, and Sarah Miriam Peale. There are sweeping landscapes by Thomas Cole, Asher B. Durand, and Jasper Francis Cropsey, and still lifes by Severin Roese, Charles Ethan Porter, and Adelaide Coburn Palmer. The exhibition also features captivating genre scenes and the work of American artists who traveled to Europe, such as Mary Cassatt, John Singer Sargent, and Childe Hassam. **Ap-pleby Foundation Exhibition Hall, Through Jan. 20** - "Ginny Ruffner: Reforestation of the Imagination" and "Bill Viola's Moving Stillness: Mount Rainier". Both exhibitions explore our unique connections with the environment through art innovation. These exhibitions invite visitors to engage with innovative art that bridges technology and nature, reflecting our profound connection to the environment. Ruffner's work emphasizes themes of reforestation and environmental awareness, while Viola's installation offers a meditative exploration of human consciousness and examines our understanding of the natural world. **Wells Fargo Art PLAYce, Through Jan. 20** - "Special Installation | Forest Feels," by Amanda N. Simons. A response to the exhibition "Reforestation of the Imagination by Ginny Ruffner, Forest Feels" invites its viewers to participate in two distinct realities of an art museum experience: to observe the work as it is in this moment, and also to change the work by contributing to its evolution. There are many ways to participate in this piece! Please interact in a way that feels right to you. Rearrange the components, create a plant (real or imagined), add on, take away, or just stay awhile and enjoy some sensations. Amanda N. Simons (b. 1984, Flint Michigan, USA) is a visual artist, writer, educator, and safety advocate whose interdisciplinary art practice currently explores the intersections of queer identity, and experience-based learning. **The Van Winkle Law Firm Gallery, Through May 31** - "Anti Form: Robert Morris's Earth Projects". The Asheville Art Museum presents Anti Form: Robert Morris's Earth Projects. The suite of lithographic drawings by Robert Morris presents a series of ideas for ten works of art shaped out of earth, atmospheric conditions, and built environments. Created in 1969, the series marks an important moment when artists began to reimagine what art could be. Morris was a pioneer in conceptual art working at the forefront of Minimalism, Process art, and Land art. He theorized and championed the work of art as an idea rather than a physical form, influencing generations of artists to come. This exhibition is organized by the Asheville Art Museum and Jessica Orzulak, Associate Curator and Curatorial Affairs Manager. **Debra McClinton Gallery, Through Mar. 31** - "Forces of Nature: Ceramics from the Hayes Collection". Ceramic artists throughout history have become masters of all four elements - creating clay from a mixture of earth and water to shape their work, drying it in air, and hardening it in fire. Throughout this process, the artist decides which aspects of the work will be tightly controlled, and when the elements can step in to leave nature's mark. This exhibition traces the historical, stylistic, and conceptual origins of work that either embraces or refuses the element of chance in ceramics, looking at modern and contemporary work made in Western North Carolina. The ceramics in this exhibition are all drawn from the robust collection of Andrew and Hatha Hayes, who have been collecting important regional pottery and sculpture for decades. Through their close relationships with artists, they have brought together works that show not only the different aesthetics seen in the region, but also a picture of the ceramics community. Regional artists including Cynthia Bringle, Donna Craven, Mark Hewitt, Fred Johnston, Ben Owen III, and Norm Schulman will be on view, demonstrating the many different approaches to ceramics in this region. **Ongoing** - The Asheville Art Museum, the hub for 20th- and 21st-century American art in Western North Carolina, has re-opened to the public. The \$24+ million, state-of-the-art facility encompasses 54,000 square feet and adds 70 percent more Collection gallery space. For the first time in the Museum's history, it has the capacity to host major traveling exhibitions from nationally recognized museums. The expansion increases its physical space and dramatically increases its role as a community center, educational resource, economic engine for WNC, and cultural concierge for the region's residents and visitors. Admission: Yes and **Pay-What-You-Wish admission for visitors from areas affected by Hurricane Helene.** Hours: Tue.-Sat., 10am-5pm; Fri. till 8pm & Sun., 1-5pm. Contact: 828/253-3227 or at (www.ashevilleart.org).

Asheville Gallery of Art, Ltd., 82 Patton Avenue, across from Pritchard Park opposite the old location, Asheville. **Ongoing** - Featuring original works of art by 31 local artists in oils, acrylics, watercolor, pastel, encaustic, and prints. Hours: Mon., 11am-6pm & Fri.-Sat., noon-5pm or by appt. Contact: 828/251-5796 or at (www.ashevillegallery-of-art.com).

Black Mountain College Museum + Arts Center, 120 College Street, Asheville. Through Jan. 11 - "The Farm at Black Mountain College". The story of Black Mountain College (BMC) has grown to mythical proportions since the liberal arts school officially closed its doors in 1957. Countless books, exhibitions, and artworks have been created to capture what it was like to live and learn at this singular college and to chart its unparalleled cultural legacy. But before this exhibition and accompanying book, nobody had written about the farm at BMC in any great detail. Built on more than a decade's worth of deep, original archival research, "The Farm at Black Mountain College" exhibition constitutes a deep new history of BMC. By focusing on the farm, the exhibition sidesteps the popular paradigm of approaching BMC through its famous faculty and students, and instead offers a new cast of characters, one that includes mostly students, women, and farmers. It spotlights the importance of collaboration, both on campus among students, faculty, and faculty families, and in the community with farmers and organizations in nearby cities and towns. Finally, the exhibition shows what happens when communal living is no longer communal, and offers a detailed account of the final dark days of the college, a dramatic and often dangerous story. **Ongoing** - An exhibition space dedicated to exploring the history and legacy of the world's most acclaimed experimental educational community, Black Mountain College. Hours: Wed.-Sat., noon-4pm or by appt. Contact: 828/350-8484 or at (www.blackmountaincollege.org).

NC Homespun Museum, next to Grovewood Gallery, at Grove Park Inn, 111 Grovewood Road, Asheville. Ongoing - This museum presents a historical overview of Biltmore Industries, an Arts and Crafts enterprise once renowned for its hand-loomed fabrics. The museum showcases memorabilia including photographs, letters, artifacts, woven samples and tailored suits from the active years of the industry. Located on the historic Grovewood grounds, adjacent to The Omni Grove Park Inn. Admission is free (donations appreciated). Hours: Mon.-Sat., 10am-5pm, & Sun., 11am-5pm. Contact: 828/253-7651.

NC Glass Center, 140 Roberts Street, Suite C, Asheville. Ongoing - The North Carolina Glass Center is a non-profit, public access glass studio providing daily educational offerings & demonstrations. We are proud to represent the work of our artists and instructors in the NCGC glass gallery. Hours: Mon., Wed., Thur. & Sun., 10am-5pm and Fri. & Sat., 10am-6pm. Contact: 828/505-3552 or at (www.ncglasscenter.org).

Odyssey Co-Op Gallery, 238 Clingman Avenue, Asheville. Ongoing - Our Gallery features works by 25 local clay artists, working in a variety of styles to create functional and non-functional pottery and works of figurative and abstract sculpture. Hours: Wed.-Mon., 11am-5pm. Contact: 828/505-8707 or at (<https://www.odysseycoopgallery.com/about/>).

Southern Highland Craft Guild, Biltmore Village, 26 Lodge Street, former Biltmore Oteen Bank Building in Biltmore Village, Asheville. Ongoing - Featuring a wide range of work by members of the Southern Highland Craft Guild. including: pottery, glass, wood, jewelry, fiber, metal, paper, mixed media and natural materials. Hours: Mon.-Sat., 10am-7pm & Sun. noon-5pm. Contact: 828-277-6222 or at (www.craftguild.org).

Southern Highland Craft Guild at the Folk Art Center, Blue Ridge Parkway Milepost 382, Asheville. Main Gallery, Through Jan. 18 - "New Members of the Southern Highland Craft Guild". This show will debut the work of 27 new members of the Southern Highland Craft Guild, accepted into the Guild for their fine quality craftsmanship in 2023 and 2024. The room will be filled with wearable, decorative, and sculptural fiber, glass, wood, clay, jewelry, metal, and mixed media. **Permanent Collection Gallery, Ongoing** - "Craft Traditions: The Southern Highland Craft Guild Collection". The Guild's Permanent Collection is comprised of approximately 2400 craft objects and dates from the late 19th century to present. Beginning with a donation from Frances Goodrich in 1931, the Permanent Collection serves the Guild's mission of craft conservation and education. This new installation will feature over 200 works that highlight our holdings in traditional art: woodcarving, pottery, dolls, basketry, weavings and furniture. The subject of this ongoing exhibition is craft history – that of the Southern Highland Craft Guild and the Studio Craft Movement. Wells Fargo of Asheville has donated Hardy Davidson's Carvings to the SHCG's

Permanent Collection. Hailing from Swannanoa, NC, woodcarver Hardy Davidson became a Guild Member in 1944 and was awarded Life membership in 1973. Hours: daily from 9am-6pm. Contact: call 828/298-7928 or at (www.southern-highlandguild.org).

Southern Highland Craft Guild on Tunnel Road, 930 Tunnel Road, Asheville. Ongoing - Work by members of the Southern Highland Craft Guild in various media. Hours: Mon.-Sat., 9:30am-5pm. Contact: 828/298-7903.

YMI Gallery, YMI Cultural Center, 39 S. Market Street @ Eagle Street, Asheville. Ongoing - "In the Spirit of Africa". Featuring traditional and contemporary African masks, figurative woodcarvings, beadwork, jewelry, and textiles. Discover the purpose of mask and sculptures, which reflect African ancestral heritage and learn to appreciate symbolism and abstraction in African art. **YMI Conference Room, Ongoing** - "Forebears & Trailblazers: Asheville's African American Leaders, 1800s – 1900s". The permanent exhibit offers a pictorial history of African-Americans from throughout Western North Carolina. Photographs of both influential and everyday people create a panorama of the variety of life among blacks in the mountain region. Here are the young and old, the prominent and the unknown, the men and women who helped create our city's life. **YMI Drugstore Gallery, Ongoing** - "Mirrors of Hope and Dignity". A moving and powerful collection of drawings by the renowned African-American artist Charles W. White. **Entry, Ongoing** - "George Vanderbilt's Young Men's Institute, 1892-Present". Admission: Yes. Hours: Tue.-Fri., 10am-5pm. Contact: 828/252-4614.

ALTERNATE ART SPACES - Asheville Biltmore Estate, One Lodge Street, Asheville. Through Jan. 5 - "Christmas at Biltmore." Experience the beloved tradition, Christmas at Biltmore, when America's Largest Home®, Antler Hill Village, and the entire estate are at their most enchanting: beautifully bedecked for the holidays. **Through Jan. 5** - "Chihuly at Biltmore," a thrilling new exhibition experience. Featured in museums and gardens around the world, including the spectacular 2018 Chihuly at Biltmore exhibition, Dale Chihuly's awe-inspiring works have captivated millions. A new experience of the artist's iconic creations makes its debut at Biltmore Estate this spring. Presented in an intimate gallery setting at Amherst at Deerpark®, Chihuly at Biltmore includes pedestal works, drawings, and large-scale installations of chandeliers, towers, mille fiori, and neon. For info about tickets and special packages visit (<https://www.biltmore.com/stay/village-hotel/special-offers/>) or for general info visit (www.biltmore.com).

The North Carolina Arboretum, Milepost 393, Blue Ridge Parkway, 100 Frederick Law Olmsted Way, Asheville. Baker Art Center, Through Jan. 24 - "Only Owls". This exhibit brings together an array of artistic representations of owls in pencil, charcoal, ink, watercolor, and woodcut, all from Leigh Yawkey Woodson Museum of Art collection. **Ongoing** - The Asheville Quilt Guild features a permanent, rotating quilt exhibit at Arboretum's Education Center. Visitors can also enjoy the Arboretum's Quilt Garden year-round, with plantings and patterns that change with the seasons. Admission: Yes. Hours: Education Center hours: Mon.-Sat., 9am-5pm. Contact: 828/665.2492 or at (www.ncarboretum.org).

Beaufort

Mattie King Davis Art Gallery, historic Rustell House of the Beaufort Historical Association, 100 Block Turner Street, Beaufort. Ongoing - The Mattie King Davis Art Gallery, Carteret County's Oldest Gallery, is housed in one of the Historic Site's oldest buildings and features over 100 local and regional artists. An extensive collection of fine art, pottery, crafts, and gifts can be found at this special gallery. Hours: Mon.-Sat., 10am-4pm. Contact: 252/728-5225 or at (<https://beauforthistoricsite.org/gallery/>).

Blowing Rock

Blowing Rock Art and History Museum, corner of Chestnut and Main streets, downtown Blowing Rock. Cannon Gallery, Through Feb. 22 - "Anna Buckner: And other Myths". Buckner is a painter in the most expanded sense of the word, creating compositions at the intersection of design, textile, and painting. "And other Myths" features a body of work that leverages the storytelling potential of quilting within the context of painterly composition and design precision. She is interested in exploring the limits of existing structures within painting, language, textile patterning, new media, and emerging modes of teaching and learning. **Fort Gallery, Jan. 25 - May 4** - "SHIP/SHAPE: Page Laughlin and David Finn". The exhibition features more than 20 paintings and sculptures that explore and delight in the various manifestations of ships as image, symbol and metaphor. The exhibition showcases two distinct, but interrelated, bodies of work pre-

continued on Page 37