

Society of Bluffton Artists

continued from Page 7

sible, relatable, and profoundly inspiring. "Whether you're an artist eager to infuse sacred geometry into your work, a seeker curious about the intersection of science, spirituality, and the natural world, or simply someone who loves exploring new ideas, this event is for you!" said Owens.

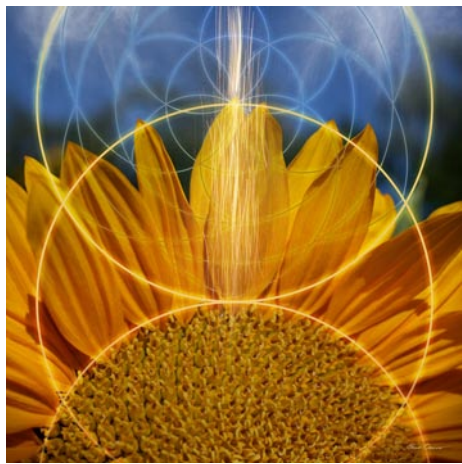
Owens, an accomplished visionary artist, photographer, and yoga teacher, combines her expertise in graphic design with her passion for spirituality and nature to create intricate mandalas, surreal landscapes, and fine art photography. Her latest collection, *Elemental Alchemy*, draws inspiration from the five elements - Earth, Air, Fire, Water, and Ether - inviting viewers to connect with themes of growth, transformation, and consciousness.

"In times of uncertainty, my art reconnects us to awe, peace, possibility, and a sense of something greater than ourselves," Owens shared.



Work by Gloria Owens

A longtime graphic designer with over 40 years of experience, Owens' work bridges the gap between traditional artistic techniques and modern digital innovation. Each piece is meticulously crafted, printed on substrates like canvas and metal, and presented as limited-edition prints. No AI



Work by Gloria Owens

is involved. Her art has been described as "transcendent," "luminous," and "evocative."

This exhibition marks an exciting opportunity to experience Owens' unique artistic vision, which merges sacred geometry with the natural world. It is a must-see for art enthusiasts, yoga practitioners, and anyone seeking awe & inspiration.

Born and raised in New York City, Owens earned her BFA from SUNY Purchase and built a thriving graphic design career. Her journey into yoga and spirituality deeply influences her artwork, which has been featured at events such as the United Nations' Culture of Peace symposium. Owens moved to Bluffton in 2020. She is currently an active member of SOBA and continues to share her talents as both an artist and yoga teacher.

SOBA is the heart of the flourishing art hub in Old Town Bluffton's historic district at the corner of Church and Calhoun streets. As a non-profit art organization, SOBA offers regular art classes, featured artist shows, exhibitions, scholarships, outreach programs and more.

For more info check our SC Institutional Gallery listings, call 843/757-6586 or visit (www.sobagallery.com).

Greenville County Museum of Art in Greenville, SC, Offers Three Artists From Carolina & Works by Jamie Wyeth

The Greenville County Museum of Art in Greenville, SC, is presenting *Art and Artists of South Carolina: Three Mighty Gamecocks*, on view for an ongoing time.

Three Mighty Gamecocks features works in various media by Corrie McCallum (1914 - 2009), Jasper Johns (born 1930), and Grainger McKoy (born 1947), all of whom graduated from high school in Sumter, South Carolina.

Corrie McCallum, a Sumter native, graduated in 1932 from Sumter High School, after which she enrolled at the University of South Carolina, and later studied at the Boston Museum School of Art. In addition to sustaining her career as a painter and printmaker, McCallum pioneered art education in the South, teaching at the Gibbes Art Gallery (now Gibbes Museum of Art), Telfair Academy in Savannah, GA, Newberry College, and the College of Charleston. In 1960, she became the first professional Curator of Art Education at the Gibbes.

Jasper Johns graduated as the valedictorian of his 1947 class at Edmunds High School, which was known as Sumter High School until the 1939-1940 school year. After attending the University of South Carolina, he relocated to New York City, where he gained prominence in the mid-1950s for his paintings of American flags, targets, alphabets, and numerals ("things the mind already knows," as Johns famously said). He is considered one of the most influential painters of the Post-World War era and America's preeminent living artist.

Grainger McKoy graduated in 1965 from Edmunds High and has spent most of his life in Sumter. After studying architecture and biology at Clemson University, he joined his knowledge of the sciences with his uncanny skills as a carver,




Jamie Wyeth (b. 1946) "Great White Shark", 2011, charcoal, oil, and watercolor on toned paper board. (© Jamie Wyeth / Artists Rights Society (ARS), NY.)

draftsman, and painter to achieve unique sculptures that fool the eye and defy gravity. His works are found in major public and private collections, most notably at Brookgreen Gardens and the Greenville County Museum of Art.


On view through Feb. 16 is the exhibition, *Jamie Wyeth: Unsettled*. The exhibition traces a persistent vein of intriguing, often disconcerting imagery over the career of renowned artist Jamie Wyeth (b. 1946). This major exhibition - organized by the Brandywine Museum of Art (Chadds Ford, PA) and five years in the making - features more than 50 works drawn from museum and private collections across the country that focus on the artist's arresting, visceral imagery, revealing


continued above on next column to the right



The Upstate Heritage Quilt Trail

A self-guided tour that invites you to explore the history of quilting in the Upstate Counties of South Carolina





Guided Tour Information or Other General Inquiries,
Contact Us at: 1.864.723.6603 email: info@uhqt.org
uhqt.org Facebook: /Upstate Heritage Quilt Trail

Funded through City of Anderson and Anderson County ATAX Commissions

ing fascinating insight into Wyeth and the art of visual storytelling. A celebrated figure in contemporary art and fiercely independent in the face of prevailing art world trends, Jamie Wyeth stands apart in a shadowy and strange world of his own creation. While frequently countered and even hidden by the artist's fuller body of work - particularly his well-known coastal views, farmscapes, and portraits - an unsettled mood.

Unsettled begins with a presentation of eccentric portraits that illustrate Wyeth's most powerful means of evoking disquieting moods. The exhibition continues by immersing viewers into natural and supernatural worlds, from works inspired by the artist's time spent in Maine - which frequently acknowledge the power of the sea and its fearsome ability to render humans helpless - to forest-based works from Pennsylvania that delve into the supernatural side of nature. The animal kingdom also offers opportunities for Wyeth to stretch his dark imagination, with portraits of frenzied birds, mesmerizing sheep, and decapitated deer in vivid paintings. The exhibition concludes with an exploration of haunted spaces that breach thresholds to explore uncertain interiors.

Jamie Wyeth: Unsettled is accompanied by a fully illustrated catalog co-published by Rizzoli Electa and Brandywine. Following its presentation at the Greenville County Museum of Art (Greenville, SC), the exhibition will travel to Dayton Art Institute (Dayton, OH), and the Frye Art Museum (Seattle, WA). This exhibition is made possible with support from Mac and Frances Weymouth, Linda L. Bean, Diana Bean, Chase, D.D. Matz, Helen C. Alexander, Cina Alexander-Forgason, Morris and Boo Stroud, and an anonymous donor.

Also on view for an ongoing time is the exhibition, *Watermedia in the Age of Wyeth*. When he was only 20, Andrew Wyeth (1917 - 2009) enjoyed a sold-out exhibition of his watercolors at New York City's Macbeth Gallery in 1937. The young artist was heralded for revitalizing the medium,



Work by Corrie McCallum (1914 - 2009)

and his career was launched. Over the next 72 years, as his methods evolved from broad abstracted washes of color to the intricate hatching of his signature drybrush technique, Wyeth firmly established his mastery of modern watermedia, which may include watercolor, gouache, tempera, acrylic, or ink (and combinations thereof).

Selected from the GCMA permanent collection, this exhibition offers the opportunity to witness Andrew Wyeth's artistic evolution over time and invites comparison with other accomplished watermedia luminaries who worked during Wyeth's life. Beginning with the Impressionist movement (Childe Hassam, Jane Peterson) of the 1920s through early variations on Modernism (Charles Burchfield, Will Henry Stevens), the exhibition includes examples of Regionalism (Thomas Hart Benton, Anne Goldthwaite), Abstract Expressionism (Hans Hofmann), Post-war multiplicity (Jasper Johns), and contemporary Realism (Stephen Scott Young, Hubert Shuptrine), before arriving at Wyeth's son Jamie, allowing viewers to trace the broad sweep of both subject matter and technical innovation in water-based media of the 20th century.

For further information check our SC Institutional Gallery listings, call the Museum at 864/271-7570 or visit (www.gcma.org).

Check us out at (www.carolinaarts.com) or e-mail to (info@carolinaarts.com)