

SC Commercial Galleries

continued from Page 69

Wet Paint Syndrome, LLC, Hillcrest Specialty Row (on the flip side), 1040 Fernwood-Glendale Rd., Suite 34, Spartanburg. **First Thur. of each month, 6:30-9pm** - "Pop-Up Gallery Nights." This is an open wall night to show and sell newer works. The Pop-Up event is intended to serve both the established and emerging artists in the region, as well as collectors who are looking for more affordable and the current edge of newer works. It is different every month, and we never know what will pop up next! Contact: 864/579-9604 or at (www.wetpaintsyndrome.com).

Summerville



Work by Detta Cutting Zimmerman

Art Central, Ltd. Gallery, 130 Central Ave., Summerville. **Ongoing** - Featuring fine art originals, reproductions, one-of-a-kind jewelry and photography by local award winning artists. Representing Helen K. Beacham, Bette Lu Bentley-Layne, Mary Ann Bridgman, Renee Bruce, Christine Crosby, Judy Jacobs, Alexandra Kassing, Sarah Allums Kuhnell, Yvonne L. Rousseau, June Sullivan, Delaine Walters, Kathleen Wiley and Detta C. Zimmerman. Featuring consignment artists Wilma Cantey/pottery, Gary Nunn/woodworking, Guenter Weber/walking sticks and sweetgrass baskets and gourds by Sharon Perkins. Hours: Mon.-Sat., 10am-5pm. Contact: 843/871-0297 or at (www.artcgalleryltd.com).

Four Green Fields Gallery & Gifts, 117-A Central Ave., Summerville. **Ongoing** - Featuring the new home of Silver Pail Pottery by potters Jillian and Robin Carway. The gallery showcases the work of 45+ American fine craft artists with an emphasis on local and South Carolina artisans. Offering a wide range of talent from the master potter to the emerging silversmith. Other media represented include fiber, wood, photography, baskets, paper, glass, metal, leather and handmade artisan products. Craft artists interested in exhibiting with Four Green Fields can find an "Artist Info Packet" on the website. Hours: Mon.-Sat., 10am-5pm. Contact: 843/261-7680 or at (www.fourgreenfieldsgallery.com).

Imperial Framing & Specialities, 960 Bacons Bridge Road, Palmetto Plaza, Summerville. **Ongoing** - Featuring works by Lowcountry artists. Hours: Mon.-Fri., 10am-6pm & Sat., 10am-2pm. Contact: 843/871-9712.

Miles Gallery, 208 S. Magnolia St., Summerville.

The following info about exhibits taking place in the Carolinas came to us after our deadline of Jan. 24th. We have included them at the end of our paper for our readers. No info about the exhibits are included in our gallery listings as they came in after those listings were completed.

Mooreville Artist Guild in Mooreville, NC, Offers New Exhibits

The Mooreville Artist Guild in Mooreville, NC, is offering several new exhibits on view from Feb. 1 - 28, 2013, at the Depot Visual Arts Center including: work by Edrie Knight in Gallery 1, works by Craig Franz in Gallery 2, and *The Universe Wants to Be Noticed*, a teen art exhibit in Gallery 3.

Edrie Bradley Knight was born in Gastonia, NC, and first started drawing in the bare dirt lot beside her home during the Depression. She is a graduate of Maryland Institute of Art and holds an honorary Bachelors of Fine Arts degree from Maryland Institute of Art in Baltimore. She has furthered her art education in numerous workshops.

Knight was a fashion illustrator for Efid's Department Stores and later worked for Southern Bell as an artist and designer, drawing ads for yellow pages for the state of NC. She is a free-lance artist in Statesville, NC, and since 1982 she has been a watercolor instructor for Mitchell Community College continuing education

Ongoing - Whimsicalities for eclectic personalities. Fun art from local, regional, and international artists. Handmade jewelry, paintings, folk art, pottery and much more. Hours: Wed.-Sat., 10am-3pm. Contact: 843/851-1182 or at (www.milesgallery.us).

People, Places, & Quilts, 129 W. Richardson Avenue, Summerville. **Ongoing** - Featuring fabric, books, patterns, notions, quilts and Folk Art. Hours: Mon.-Fri., 10am-5:30pm and Sat., 10am-5pm. Contact: 843/937-9333 or at (www.pquilts.com).

Tea Farm Cottage, 808 N. Cedar St., Summerville. **Ongoing** - Featuring works by the largest group of artisans and crafters in the tri-county area with 90 sellers under one roof, plus locally-made foods and antiques. Monthly arts and crafts shows on our 1/2 acre property. Hours: Mon.-Sat., 11am-5pm. Contact: 843/871-1113.

The Finishing Touch, 140-A West Richardson Ave., Summerville. **Ongoing** - Featuring original art, fine crafts, framing and interior design by appt. Hours: Mon.-Fri., 10am-6pm & Sat., 10am-5pm. Contact: 843/873-8212.

Treasure the View - Sand Carved Glass, 129 1/2 W. Richardson Ave., Summerville. **Ongoing** - Unique sand carved glass sculptures created by renowned artist Lex Melfi. Each piece is a one-of-a-kind masterpiece produced by cutting images into glass using high-pressured sand. Hours: by appt. only. Contact: 843/875-7822 or at (www.lexmelfi.com).

Sumter

Elephant Ear Gallery Fine Arts and Creations, 672 Bultman Dr., Sumter. **Ongoing** - Featuring works by 23 artists offering every medium from watercolor to angora grown rabbits producing fur for spinning. Hours: Mon.-Sat., 10am-6pm. Contact: 803/773-2268.

Walhalla

Art Circle Gallery, 124 E. Main Street, Walhalla. **Through Feb. 9** - "Walhalla now and Then," featuring old Walhalla photograph and art work from Walhalla artists or inspired by Walhalla and "Paul Dohr, 85th and painting!" celebrating Dohr's birthday and artistic career. **Ongoing** - Featuring one of a kind and limited edition jewelry pieces, sculptures, baskets, ceramics, paintings, sculptures, glass, glicee and art prints. The gallery feature art works by regional and international artists: Debe Abbott, Dianne Bartlett, Judy Blanchard, Brian Bowlby, Michael L. Brown, Bess Ciupak, Garry Collier, Robin Anne Cooper, Alex Daini, Rita Daini, Rudy Daini, Meredith Davis, Paul Dohr, Stan DuBose, Suzanne Glenn, Donna Juras, Lou Koppel, Ullisses Kullick, Julie Lamp, Sarah Mannino, Susan Moon, Katie Potelara, Jack Rookard, Faye Smith and Kathy Young. Artist teaching Art program and free monthly art talks. Hours: Tue.-Fri., noon-5pm & Sat., 10am-2pm. Contact: 864/638-7420 or at (www.ArtCircleGallery.com).

department.

Knight has received numerous awards for her work in oil, watercolor, pen & ink, plus awards in sculpture and photography. She has had more than 50 solo shows and her paintings are included in many collections in this country and abroad.

Frederick 'Craig' Franz's home in Avery County, NC, is an area that is a landscape artist's dream. His home is at the foot of rugged Grandfather Mountain and on the northern border of the Pisgah National Forest. The area is lush with dense forests and cascading streams.

Franz's journey as an artist began with a career as a jeweler/craftsman, designing and fabricating original creations in gold and silver. He studied drawing and painting in college, but did not choose to pursue those interests until into his 50's. An admiration of impressionism, especially the continued development from the 20th century American impressionists, helped guide his path.

continued above on next column to the right

Franz's award winning paintings in soft pastels and oils are created both in Plein Air and in the studio. "Capturing on canvas the mood and atmosphere from a landscape setting is a lifelong pursuit and challenge. But one that is filled with such satisfaction it is the reason painters have such excitement and passion for what they do," says Franz.

Cheyne Campbell is a sophomore at South Iredell High School and a member

of the IB program. Campbell, as part of her school's personal project program created a teen exhibit, *The Universe Wants to Be Noticed*, at the Mooreville Artist Guild Depot Visual Arts Center in historic downtown Mooreville for the month of January.

For further information check our NC Institutional Gallery listings, call the Guild at 704/663-6661 or visit (www.MAGart.com).

RIVERWORKS Gallery in Greenville, SC, Offers Painters

RIVERWORKS Gallery in Greenville, SC, will present *Painting Invitational*, which features a representative few of the many highly talented, motivated past and present painting students of Greenville Technical College, on view from Feb. 1 - 24, 2013. A reception will be held on Feb. 22, from 6-8pm.

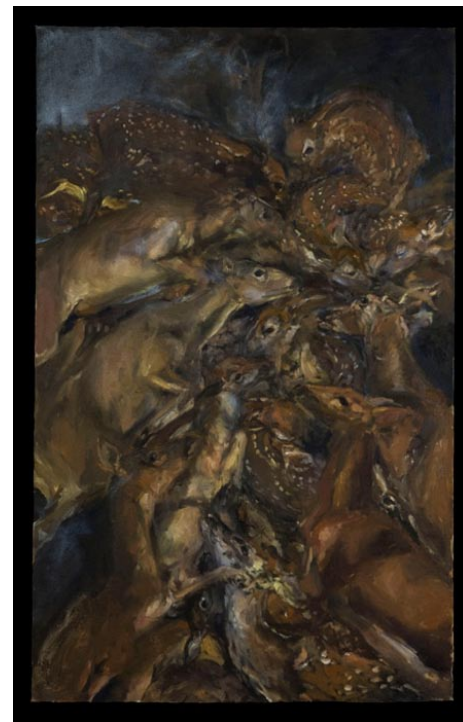
Associate Professor, Enid Williams, herself a nationally recognized painter, invited Kara Bender, Rachel Borgman, Mary Cooke, Carly Drew, Dalia Karina, Miranda Sawyer, Jonathan Sherrill, Travis Wood, Matthew Neilson, and Britt Relford to fill RIVERWORKS Gallery.

The exhibition includes a diversity of thought, experience and method. Kara Bender pushes the definition of painting itself and says concerning her work, "Because I was studying various painting myths, the works themselves are inspired by various myths from all over the world."

Rachel Borgman writes, "Animal life presents us with a model for an ideal codependent system of (her painting series) natural sympathies." Carly Drew records conversations with nature and memories to emphasize "the importance... place has in contemporary visual culture."

Jonathan Sherrill pieces and grafts canvas, fabric, house paint "that conjure up his notions of the landscape and the domestic."

All these alumni utilized the solid art foundation and rigorous expectations mastered at Greenville Technical College to continue their studies in four year institutions. Also Sherrill and Bender have since earned MFA's and Drew is currently attaining an MFA. Karina, Neilson, and



The Prince with A Thousand Enemies by Rachel Borgman.

Relford paint on toward completion of an AA at Greenville Technical College.

RIVERWORKS Gallery is operated by and for the faculty and students of the Department of Visual and Performing Arts at Greenville Technical College. The gallery is located on River Street, along the scenic Reedy River in downtown Greenville.

For further information check our SC Institutional Gallery listings, call the gallery at 864/271-0679 or visit (www.gvltec.edu/vpa/) and click on Riverworks.

The Bascom in Highlands, NC, Offers Three New Exhibitions

The Bascom in Highlands, NC, is presenting several new exhibits including: *Regional Arts Organizations: Selected Works*, on view through Mar. 31, 2013; *Polly Knipp Hill: Marking a Life Through Etching*, on view through Mar. 10, 2013; and *The Bascom Instructors*, on view through Mar. 31, 2013.

Thirteen local arts groups - a record number - are participating in The Bascom's annual exhibition, *Regional Arts Organizations: Selected Works*. This show includes a variety of innovative works from these members. These arts organizations not only support their artists and foster excellence and professionalism, but also increase the public value of arts in the community. The Bascom is pleased to recognize these regional artists through this annual exhibition, in keeping with its mission to enhance the quality of life through dynamic, inspirational and transformational art experiences.

For the first time this year, The Bascom will present \$700 in awards, including a People's Choice Award. The reception and awards announcement will take place on Saturday, Mar. 23, from 5-7pm. Everyone is welcome to come to the reception.

This year, the participating arts organizations are: Appalachian Pastel Society (Waynesville, NC); Art League of

Highlands (Highlands, NC); Blue Ridge Fine Arts Guild (Highlands, NC); Blue Ridge Mountains Arts Association (Blue Ridge, GA); Cherokee County Arts Council (Murphy, NC); Connestee Art League (Cedar Mountain, NC); Currahee Artists' Guild (Toccoa, GA); High Country Watermedia Society (Boone, NC); Macon County Art Association (Franklin, NC); Mountain Laurel Quilters' Guild (Clarksville, GA); North Georgia Arts Guild - Clayton, GA); Swannanoa Valley Fine Arts League (Black Mountain, NC); and Valley River Arts Guild (Murphy, NC).

The exhibit *Polly Knipp Hill: Marking a Life Through Etching*, was organized by the Georgia Museum of Art, University of Georgia, Athens. This fascinating collection of works shows architectural scenes of Europe and glimpses of ordinary folks in the mountains and in Florida. The artist, who lived in Highlands for several years, began making prints in the 1920s of charming scenes of American life.

In the exhibition, *The Bascom Instructors*, these diverse and wonderful works of the dedicated artists who teach at The Bascom will inspire you to sign up for any of their classes and workshops.

For further information check our NC Institutional Gallery listings, call 828/526-4949 or visit (www.TheBascom.org).

Don't see info about your exhibit or art space here? Did you send us your info? The deadline each month to submit articles, photos and ads is the 24th of the month prior to the next issue. This will be Feb. 24th for the March 2013 issue and Mar. 24 for the April 2013 issue. After that, it's too late unless your exhibit runs into the next month. But don't wait for the last minute - send your info now.

And where do you send that info?

E-mail to (info@carolinaarts.com) or mail to: Carolina Arts, P.O. Drawer 427, Bonneau, SC 29431