

Asheville Art Museum, NC

continued from Page 17

admitted for free with student I.D.

On Apr. 16, at 7pm - Lecture - "Look Homeward Angel: Memory, Imagination, and the Worlds We Share" lecture by Dr. Charles Russell. Free with Membership or Museum admission. UNC Asheville students are admitted for free with student I.D.

On May 8, at 6pm - Lecture - "Henry Darger: Panoramas and Hyperbole" lecture by Dr. Leisa Rundquist. Free with Membership or Museum admission. UNC Asheville students are admitted for free with student I.D.

For further information check our NC Institutional Gallery listings, call 828/253-



George Widener, *Nashville, TN Map*, 2010, mixed media on paper, 19.5 x 30 inches. Collection of Sara Kay, NY. Image courtesy of Ricco/Maresca Gallery, New York.

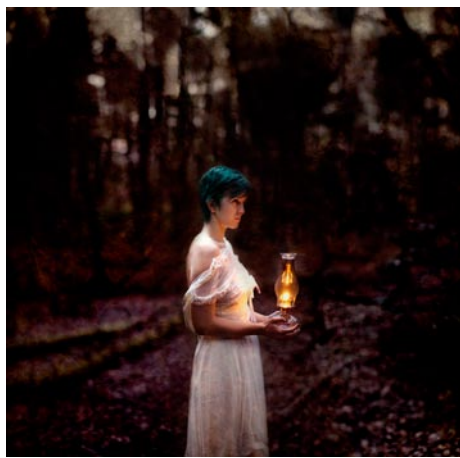
3227 or visit (www.ashevilleart.org).

UNC Asheville in Asheville, NC, Features Works by Members of Student Art Organization

Art Front, UNC Asheville's student art organization, is presenting its *Annual Juried Members' Show*, on view at Highsmith Art and Intercultural Gallery on the campus in Asheville, SC. UNC Asheville Art History faculty and students selected the works for this show.

The exhibition includes works in ceramics, oil painting and photography, among other media. Many pieces will be available for purchase.

For further information check our NC Institutional Gallery listings, call the gallery at 828/251-6585 or visit (cesap.unca.edu/about-gallery).



Work by Amryn Soldier

Green Sage Coffeehouse & Café in Asheville, NC, Offers Photography

The Green Sage Coffeehouse & Café in Asheville, NC, is presenting *Visual Design: Images that Endure*, featuring the work of four WNC photographers: Bonnie Cooper, Don McGowan, Bruce Siulinski, and Rob Travis, on view in both their locations through Mar. 31, 2014.

Rob Travis organized the exhibit and appreciates each photographer's distinct style. "This extraordinary exhibit showcases each of the individual artist's approach to the process of "visual design" in fine art photography. Balance, space, and visual design elements found in nature are artfully utilized in this inspiring display of creative expression. The exhibit nicely complements the décor of both venues."

The images exhibited have a heavy emphasis on nature with a selection of landscapes and portraits of flowers and trees. In keeping with the theme of "Images that Endure" there's also nostalgic photographs including a series of rustic cars. Today's photographers have a wide choice of materials on which to offer their images to customers. The images on display include those on photographic paper framed under glass, canvas and metal.



Work by Bonnie Cooper

Bonnie Cooper resides in Asheville and has practiced photography with passion since 2000. Her images celebrate the beauty of the natural world around the country. She works as an artist, teacher and writer and assists in the EarthSong Photography Workshops and tours.

Don McGowan, also of Asheville is a professional nature photographer. Through his photography he is "creating a connection with the earth and using my camera



Work by Rob Travis

to express that connection; and then by extension to invite all of you to share it with me." In addition to his fine art photography and commercial services, McGowan leads the EarthSong Photography Workshops and tours.

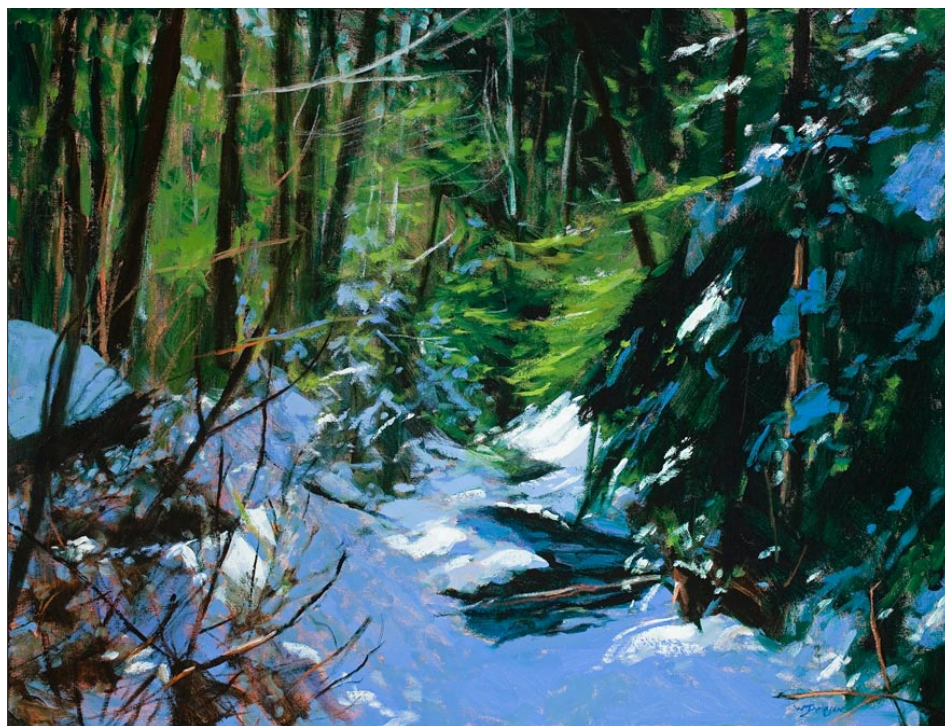
Bruce Siulinski studied graphic design and photography in Texas before moving to Brevard, NC, in 2004. Favorite subjects are nature and landscape images often of forests and the coastal regions of the Carolinas and Maine. He has a passion for outdoor sports - skiing, fly fishing, windsurfing and kayaking and these interests shape his photography and often provide the creative ideas behind his work.

Rob Travis is from Transylvania County and also works as a glass artist at Glass Feather Studio Gallery in Cedar Mountain, NC, a craft that influences his photography. His photography has been featured extensively in publications throughout the area. "I photograph the majestic and the minute, all focused on capturing the spirit within. At the end of the day, I want my photography to take my viewers out there with me, on their own journey, through my art."

The Green Sage has a history of also supporting the work of local artists. The Green Sage Coffeehouse & Café serves healthy food made with natural, local, and organic ingredients. The locations are downtown Asheville, 5 Broadway Street and South Asheville, 1800 Hendersonville Road.

For further information check our NC Commercial Gallery listings or call 828/252-4450.

Check us out at (www.carolinaarts.com) or e-mail to (info@carolinaarts.com)



February on Roan Mountain II

26 x 34 inches

William Jameson

Solo Exhibit at Irene Morrah Fine Art

February 21 - March 31, 2014

WILLIAM JAMESON WORKSHOPS 2014

"Working Large Without Fear," Saluda, NC

March 20 - 22, 2014

"Spring on the Blue Ridge," Saluda, NC

May 15 - 17, 2014

"Fall in Colorado"

September 22-27, 2014

"Fall on the Blue Ridge," Saluda, NC

October 20-24, 2014

Each William Jameson Painting Workshop is designed to be an educational and entertaining experience. Along with exhilarating travel, students from beginner to advanced will receive one-on-one instruction in oil, watercolor or acrylic and pen and ink sketching.

Whether the travel is down the mountain or to the Bahamas or Italy, you will be with like-minded folks who share your love of art. There will be six hours of instruction each painting day at sites I have carefully selected for their architectural interest or appealing landscapes. Each day will include demonstrations, critiques and help with photography for use in painting your own work of art.

All workshops include a "welcome" party and some workshops include private museum tours or excursions to special venues that we have cultivated over the years.

Non-painter companions are always welcome! Our workshop trips take us to breathtaking places where there is something of interest for everyone. Of course, special pricing is available for these companions. Please see specific workshop information for additional descriptive information.

Detailed info is available at www.williamjameson.com or call 828.749.3101.

Turtle Island Pottery



Handmade pottery
by
Maggie & Freeman Jones

Old Fort Showroom
Open Most Saturdays

Call 828-669-2713
for an appointment
Showroom: 828-337-0992
2782 Bat Cave Road
Old Fort, NC 28762
www.turtleislandpottery.com

Caldwell Arts Council in Lenoir, NC, Offers Photographic Exhibit

The Caldwell Arts Council in Lenoir, NC, will present *Image-Inations*, featuring black & white photography by Bob Phipps, along with photographic selections from the Turchin Center's collection of Andy Warhol Polaroids and the Hickory Museum of Art's collection of Dr. Harold Eugene "Doc" Edgerton's stop-action photography. The exhibit will be on display from Feb. 7 - 28, 2014, and there will be an opening reception Feb. 7, from 5-7pm.

Lenoir photographer Bob Phipps says "As a biologist and photographer, I tend to have a different view of the world. I see many things others miss due to observational training in Biology. Changes in temperature, humidity, clouds, wind, and light all play a role in the appearance of a photograph. Learning to see and think in Black and White was initially a challenge, but soon overcome. Looking for the full range

of tones of light in a scene, from bright to shadow to dark, helps determine if the scene before me will make a B/W or just a mediocre shot. Finding the greatest contrast and spread of these tones throughout the scene, will keep the eye actively engaged in the photograph."

"My goal has always been to find and share the beauty of nature," adds Phipps. "From the large scenic to the microscopic complexity of life, photography allows me to share my concerns for our planet and our future."

Polaroid photographs by Andy Warhol, (collection on loan from the Turchin Center for Visual Arts at Appalachian State University in Boone, NC) will also be on display.

The Andy Warhol Foundation For The Visual Arts is quoted as saying, "While the polaroid portraits reveal Warhol's profound

continued on Page 19