

# NC Commercial Galleries

continued from Page 62

**Lost & Found Gallery**, 517 South Elm Street, Greensboro. **Ongoing** - Folk art, tribal art, textiles, and beads of the world. Hours: noon - 5:30pm, closed Wed. & Sun. Call ahead. Contact: 336/271-6954.

**The Art Shop**, 3900 W. Market St., Greensboro. **Ongoing** - Featuring works by Pino, Arvid, Park, Garmash, Sabzi, Hessam and others. We feature America's most collected artists. We also carry sculpture by Frogman (Tim Cotterill), Leon Bronstein & Paige Bradley and fine art glass by Randy Strong, John McDonald & Scott Bayless. Thomas Kinkade; original oil paintings, limited edition prints and posters. Hours: Mon.-Fri., 10am-6pm; Tue. & Wed till 7pm & Sat. 10am-5pm. Contact: 336/855-8500 or at ([www.artshopnc.com](http://www.artshopnc.com)).

**The Artery Gallery**, 1711 Spring Garden Street, Greensboro. **Ongoing** - Featuring works by David Thomas, Roy Nydorf, Bruce Shores, Matthew Micca, Lisa Woods, Bill Clubb, Jack Stratton, Erin Stesch, Vito Ciccone, Alex Forsyth, Martin Dunn, and more. Hours: Mon.-Thur., 10am-6pm; Fri., 10am-5pm; & Sat., 10am-4pm. Contact: 336/274-9814 or at ([www.arterygallery.com](http://www.arterygallery.com)).

**Tyler White O'Brien Gallery**, 307 State Street, beside Cafe Pasta at the intersection of Golden Gate & State Streets, Greensboro. **Ongoing** - Tyler White Gallery offers residential and corporate fine art consulting services. We will outline a personalized budget plan for your specific needs. We also offer art research, presentation and installation services. Whether you are an avid art collector or a first time purchaser, Tyler White Gallery will guide you every step of the way. Hours: Mon.-Fri., 11am-5pm & Sat., 11am-4pm. Contact: call Kathy O'Brien (owner) at 336/279-1124 or at ([www.tylerwhitegallery.com](http://www.tylerwhitegallery.com)).

**Uptown Artworks**, 1007 Arnold Street, located between E. Wendover Ave. and E. Bessemer Ave., Greensboro. **Ongoing** - Primarily a "working artist studio," our 5,400 square foot facility has a large front gallery and currently houses 10 studios with room to build 7 more. Hours: Mon., 10am-4pm; Sat., 10am-2pm; Sun., 1-4pm or by appt. Contact: Joseph A. Wilkerson at 336/255-6345.

**William Mangum Watercolors/Carey-Mangum Gallery**, 2182 Lawndale Dr., Greensboro. **Ongoing** - Original paintings, limited edition prints, miniature prints, posters and notecards by William Mangum. Hours: Mon.-Fri., 10am-5:30pm & Sat., 10am-3pm. Contact: 336/379-9200 or 800/887-5380.

**Winter Light Gallery & Art Studios**, 410 Blandwood Ave., corner of Blandwood Ave. and Spring Garden St., Greensboro. **Ongoing** - Featuring works by Kim Holleman, Vicki Johnson, Judy Meyler, Carol Meetze-Moates, Kathy Phillips, Steve Robinson, Carol Sams, Alie Scott, Phyllis Sharpe, Jane Smith, Stephanie Thomas, Steve Thomas and Jeanne Twilley. Hours: Mon., Tue., Thur., & Sat., 11am-2pm. Contact: 336/274-7372 or at ([www.winterlight-artists.com](http://www.winterlight-artists.com)).

**Yew Tree Gallery**, 604 S. Elm St., Greensboro. **Ongoing** - The gallery is a subsidiary of Ambleside Gallery, and is home to 16 painters who work in a variety of media and styles, including oils, acrylic, pastel, pen and ink, and watercolor. The gallery also features pottery. Hours: Wed.- Sat., 11am-5pm or by appt. Contact: 336/790-8703.

ALTERNATE ART SPACES - Greensboro  
**Bliss & Co. Salon**, 238 S. Elm Street, Greensboro. **Ongoing** - Featuring an ever-changing exhibit of works by Charlotte and Erik Strom. Hours: Mon., 10am-6pm; Tue.-Fri., 10am-8pm; & Sat., 10am-6pm. Contact: 336/373-0299 or the Stroms at 336/691-8036 or e-mail to ([charlotteart@hotmail.com](mailto:charlotteart@hotmail.com)).

**Just Be**, 352 S. Elm Street, Greensboro. **Ongoing** - Just Be is a specialty boutique filled with handmade and unique items like jewelry, handbags, apparel, home décor and much more. Shop in the store or online at. Hours: Mon.-Thur, 10am-6pm; Fri.&Sat., 10am-8pm; and Sun., 1-5pm. Contact: 336/274-2212 or at ([www.onlyjustbe.com](http://www.onlyjustbe.com)).

## Greenville

**City Art Gallery**, 511 Red Banks Road, Greenville. **Ongoing** - The gallery features the works of established regional and national artists and craftspeople. The gallery offers an extensive collection of paintings, sculpture, ceramics, glass, drawings and photography. Hours: Mon.-Fri., 10am-6pm & Sat., 10am-4pm or by appt. Contact: 252/353-7000 or at ([www.cityartgallery.com](http://www.cityartgallery.com)).

CityArtGreenville.com).

**Strickland Art Gallery**, 817 Dickinson Ave., Greenville. **Ongoing** - The gallery specializes in art by North Carolina artists including Francis Speight, Sarah Blakeslee, Hobson Pittman and Claude Howell. Contemporary NC artists are also shown. Hours: Mon.-Tue., 10am-6pm and by appt. Contact: Barbour Strickland 252/561-7980 or at ([www.StricklandArtGallery.com](http://www.StricklandArtGallery.com)).

**Uptown Art Supply & Gallery**, a division of UBE, 529 S Evans Street, Greenville. **Ongoing** - Featuring works in a variety of media by local and regional artists. Hours: Mon.-Fri., 9am-6pm and Sat., 10am-5pm. Contact: 252/752-0688 or at ([www.uptownart.net](http://www.uptownart.net)).

## Hendersonville - Flat Rock

**Art MoB Studios & Marketplace**, 124 4th Avenue East, Downtown Hendersonville just off of Main Street, Hendersonville. **Ongoing** - Art MoB now represents over 90 local artists and has been proudly open for three years, and counting. Art MoB also features 5,000 square feet of space including four studios with wonderful resident artists. These artists can be found fast at work in their studios most days of the week. We invite you to come and join us... see our work, meet our artists, and take classes with us. Hours: Mon.-Sat., 10am-5pm & Sun., 1-4:30pm. Contact: 828/693-4545 or at ([www.artmobstudios.com](http://www.artmobstudios.com)).

**Carolina Mountain Artists**, 444 N. Main Street, Hendersonville. **Ongoing** - Featuring works by regional and local artists in every media. Hours: Mon.-Sat., 10am-6pm & Sun., 1-5pm. Contact: 828/696-0707.

**McCarter Gallery**, 451 N. Main St., Hendersonville. **Ongoing** - Featuring the working studio-gallery of landscape artist Alan McCarter, specializing in his acrylic paintings of the beauty of Nature in the Blue Ridge and Great Smoky Mountains. Also, featuring a display of new works monthly. And, watercolors and acrylics of Robbin McCarter and art glass by Czech glass master Igor Muller and Canadian Robert Held. Hours Mon.-Sat., 10:30am-5:30pm & by appt. Contact: 828/698-7117 or at ([www.mccarter-gallery.com](http://www.mccarter-gallery.com)).

**Narnia Studios**, 315 N. Main St., Hendersonville. **Ongoing** - Featuring works by local and regional artists in a variety of media. Hours: Mon.-Sat., 9:30am-6pm. Contact: 828/697-6393 or at ([www.narniastudios.com](http://www.narniastudios.com)).

**Silver Fox Gallery**, 508 N. Main Street, Hendersonville. **Ongoing** - Featuring contemporary fine art, hand-crafted artworks from the US only, from primarily regional artists. And, now Home Furnishings. Hours: Mon.-Thur., 10am-6pm; Fri., 10am-7pm; Sat., 10am-6pm; Sun., noon-5pm. Contact: 828/698-0601 or at ([www.silverfoxonline.com](http://www.silverfoxonline.com)).

**The Portrait Source**, Hwy. 225 S., along "Little Rainbow Row", Flat Rock. **Ongoing** - Representing the nation's finest portrait artists and we help clients find the perfect artist for both families and the corporate world. We have expert sales consultants throughout the country. Visit our unique gallery where we have a continuing display of sample paintings. Hours: Mon.-Sat., 10am-4pm or by appt. Contact 800/586-6575 or at ([www.theportraitsource.com](http://www.theportraitsource.com)).

## High Point

**J. Gallery at JH Adams Inn**, 1108 North Main Street, High Point. **Ongoing** - Featuring works by artists from across the country with an emphasis on North Carolina artists. Hours: Mon.-Fri., 9am-5pm, but it is suggested you make an appointment. Contact: Julie Delgaudio at 336/8478672 or by e-mail at ([phonefrnz@aol.com](mailto:phonefrnz@aol.com)).

**JK Gallery**, 342 North Wrenn Street, High Point. **Ongoing** - Featuring fine art photography by Jim Koch. Exhibiting black & white original silver gelatin prints and interpretations of color, architectural images, landscapes and portraits. Hours: M.-F., 9am-5pm. Contact: 336/883-2370 or at (<http://www.jk-gallery.com/>).

**Kelly Brooke Pottery & Gallery**, 709 W. Lexington Ave., inside of DeBeen Espresso, High Point. **Ongoing** - All of my work is wheel thrown and/or hand built from a porcelain clay body made right here in North Carolina. I use a centuries old style of surface decoration known as sprigging where I individually apply hand carved dragonflies or flowers to the leather hardened pots. Choose from mugs, bowls, vases, honey pots, teapots, plates, platters, etc.

All of the pottery is food safe, microwave, and dishwasher safe and very durable. Hours: daily 8am-8pm. Contact: 336/889-2107 or at ([www.kellybrookepottery.com](http://www.kellybrookepottery.com)).

## Hillsborough

**Callaway Jewelry & Spiral Studios**, 115 North Churton Street, Hillsborough. **Ongoing** - Offering beautiful handmade jewelry in sterling silver and gold by metalsmiths/designers Catharine Callaway and Jeannine Rogers. Hours: Mon.-Fri., 10am-6pm & Sat., 10am-4pm. Contact: 919/732-2013 or at (<http://www.sterlingspirals.com/>).

**ENO Gallery**, 100 South Churton Street, Hillsborough. **Ongoing** - The gallery represents exceptional contemporary emerging and established artists for both first time buyers and discerning collectors. Eno Gallery is a unique and intimate exhibition space. We offer work from artists of exceptional quality and dedication. Representing some of the most creative individuals from regional and national communities. Hours: Tue.-Thur., noon-6pm & Fri.-Sat., noon-8pm. Contact: 919/833-1415 or at (<http://www.enogallery.net/>).

**Hillsborough Artists Cooperative and The Skylight Gallery**, 102 West King Street, upstairs over Antonia's Restaurant, Hillsborough. **Ongoing** - Founded in 1992, featuring works by Jayne Bomberg and Tom Guthrie (The Studio of Collective Effervescence); Jennifer E. Miller, Andrea DeGette, Jacquelin Liggins, and Tiffney Marley. Hours: last Fri. of the month from 6-9pm or by appt. Contact: 919/929-2691 or 919/644-8637.



Work by Marcy Lansman

**Hillsborough Gallery of Arts**, 121 N. Churton St., Suite 1-D, Hillsborough. **Through Feb. 21** - "FLOW," a poetry/art exhibition featuring the work of the Gallery's artists and of NC poets inspired by nature and rivers. FLOW is dedicated to the Eno River Association, whose mission is to conserve & protect the natural, cultural, & historic resources of the Eno River Basin. **Feb. 22 - Mar. 20** - "It's All About the Story, Volume IV - Allan Gurganus". The artists of the Hillsborough Gallery of Arts respond, in their own mediums, to stories by Hillsborough author Allan Gurganus from his book "Local Souls." A reception will be held on Feb. 26, from 6-9pm. Reading in the gallery by Allan Gurganus on Feb. 28, from 4-6pm. **Ongoing** - Founded in 2006, the gallery is owned by 22 artists and features painting, sculpture, photography, glass art, jewelry, turned wood, handcrafted furniture, pottery, mosaics & fiber art. Hours: 10am-6pm, Mon.-Thur.; 10am-8pm, Fri. & Sat.; and noon-4pm, Sun. Contact: 919/732-5001 or at ([www.HillsboroughGallery.com](http://www.HillsboroughGallery.com)).

**Sovero Art Gallery & Studio**, 121 North Churton Street, Suite 2-B, Hillsborough. **Ongoing** - Featuring jewelry and oil paintings by Peruvian artist David Sovero, who was born in 1971 in Lima, Peru. He graduated from the Peruvian National Arts College where he attended from 1990 -1996. He has a strong academic foundation. His Incan ancestral roots are saturated with thousands of years of Andean stylized figures. Hours: Mon.-Sat., 10am-7pm. Contact: 919/619-5616 or at (<http://soveroart.com/>).

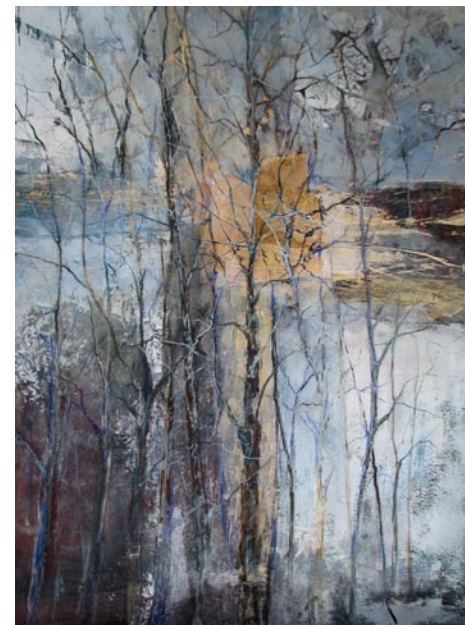
## Lenoir

**Morning Song Gallery**, at old Victorian house, 512 West Avenue, NW, across from the Lenoir Post Office and to the right of Baker Realty, Lenoir. **Ongoing** - Featuring works by local and regional artists. Hours: Call ahead. Contact: Margaret Carter Martine at 828/754-5693.

## Lexington

**The Bob Timberlake Gallery**, 1714 E. Center Street Extension, Lexington. **Ongoing** - Featuring original artwork and reproductions by Bob Timberlake. Also furniture, gifts, apparel and collectibles. Hours: Mon.-Sat., 10am-5pm. Contact: 800-244-0095 or at ([www.bobtimberlake.com](http://www.bobtimberlake.com)).

## Lincolnton



Work by Susan Carlisle Bell

**Gallery 27**, 808 W. Hwy. 27, Lincolnton, NC. **Through Feb. 17** - "Roots & Wings," features paintings by artists Susan Carlisle Bell and Bree Stallings, which draws heavily from nature for inspiration. The works of these artists have an ethereal quality that whispers of the spiritual connection between nature and humankind, simultaneously grounding us to the cycle of life while lifting our spirits to entertain the possibilities of what lies beyond this mortal coil. "Roots & Wings" is another exhibition in Gallery 27's 2016 Visiting Artists Series. **Ongoing** - The gallery is the area's only working art gallery specializing in representing new and emerging artists. We also represents established artists. The space houses a formal fine art gallery, gift shop, and large classroom area. Hours: Wed.-Fri., 11am-6pm, and Sat., 9am-2pm. Contact: 704/240-9060 or at ([www.ncgallery27.com](http://www.ncgallery27.com)).

## Linville/Linville Falls Area

**Anvil Arts Studio & Sculpture Gardens**, Hwy. 221, Linville Falls. **Ongoing** - While in Linville Falls, be sure to come by and stroll through the gallery, studio, and sculpture gardens of artist Bill Brown. His works include contemporary sculpture, sculptural lighting, and paintings. You'll be drawn into each piece of art as it appeals to your understanding from a myriad of materials including steel, copper, bronze, and various patinas. Hours: Mon.-Fri., 9am-5pm should call ahead at 828-765-6226 or at ([www.studiosculpture.com](http://www.studiosculpture.com)).

**87 Ruffin Street Gallery**, located next to the Old Hampton General Store and Barbeque, Hwy. 221 in Linville. **Ongoing** - The gallery features the work of local and regional folk artists, potters, figural wood carvers, glass artists and painters. This unique gallery also carries beautiful furniture handcrafted by local artists from local woods. The gallery has its own framing shop for all your picture framing needs. Whether you are looking for original artwork for you home or for a gift Ruffin Street gallery is the perfect destination. Hours: Mon.-Sat., 10am-5pm & Sun., 11am-5pm. Contact: 828/737-0420 or at ([www.ruffinstreetart-gallery.com](http://www.ruffinstreetart-gallery.com)).

## Mars Hill

**Tom Turner Porcelain**, 381 Turner Lane, Mars Hill. **Ongoing** - Featuring wheel thrown and high fired porcelain art pottery by Tom Turner with classical glazes like copper red oxblood, oilspot, celadons, and ash glazes. Hours: by appt. Contact: 828/689-9430 or at ([www.tomturnerporcelain.com](http://www.tomturnerporcelain.com)).

## Marshall

**East Fork Pottery**, 268 Ras Grooms Road, Marshall. **Ongoing** - East Fork Pottery was founded in 2010 by Alexander Matisse. We make a full range of functional and sculptural ceramics, fired in a large wood bruning kiln. Striving to understand our place in the tapestry of American ceramics, we hold the past, pres-

continued on Page 64