

# NC Commercial Galleries

continued from Page 59

**Spectrum Art & Jewelry**, @ The Fourm, 1125-H Military Cutoff Rd., Wilmington. **Ongoing** - Featuring works by over 100 regionally and nationally renowned artists in a variety of media. Hours: Mon.-Sat., 10am-6pm. Contact: 910/256-2323 or at ([www.spectrumartgallery.com](http://www.spectrumartgallery.com)).

**The ArtWorks**, 200 Willard Street, Wilmington. **Ongoing** - The ArtWorks is an art village providing art studios, gallery space, and an event venue; fostering a creative environment for artists, educational opportunities, and enhancement of the Wilmington community, through art. Our Mission is to enhance the community, assist the artist, contribute to the revitalization of downtown Wilmington, to preserve Wilmington's commercial landmarks, and to increase the livelihood of local artists and provide a place to create and display all types of art. Hours: 2nd & 4th Saturdays, 10am-3 or by appt. Contact: 910/352-7077 or at ([jim.knowles@theartworks.com](mailto:jim.knowles@theartworks.com)).

**The Golden Gallery**, @ The Cotton Exchange, 307 N. Front St., Wilmington. **Ongoing** - Featuring works by John W. Golden and Mary Ellen Golden. Hours: Mon.-Sat., 10am-5:30pm & Sun., 1-4pm. Contact: 910/762-4651 or at ([www.thegoldengallery.com](http://www.thegoldengallery.com)).

**Three Hounds Gallery**, 29 S. Front St., Wilmington. **Ongoing** - Featuring works by Wayne McDowell, Jeff Chase, Dick Roberts, Shawn Best, Kristin Gibson, Fritz Huber, Joanne Geisel, Christa Sylvester, Brian Evans, Mark Gordon, Rex Miller, and jewelry by Emily Parker. Hours: Tue.-Thur., 11:30am-5:30pm; Fri. and Sat., 11:30am-7:30pm & Sun., noon-3pm. Contact: 910/815-3330 or at ([www.threehoundsgallery.com](http://www.threehoundsgallery.com)).

## Winston-Salem Area

**Downtown Arts District**, Sixth and Trade streets, Winston-Salem. **Feb. 2, 7-10pm** - "DADA First Friday Gallery Hop," with special artist demonstrations, art exhibits, and shops and studios open evening hours. Events are free and open to the public. Gallery Hops are funded and sponsored by the Downtown Art District Association, a non profit organization, and their supporting membership. Contact: 336/722-2345.

**ArtConnections**, 629 N. Trade St. Winston Salem. **Ongoing** - Four local artists' working studios, shop, and gallery. Artists: Audrey Lyng - colored pencil drawings, mixed media, and prints; Patty Pape - upcycled clothing, hand bound books, and calligraphy services; Anne Murray - fine art book binding, hand made paper, and marbling; Melrose Buchanan - paintings, prints, collage, and drawings. Shop also sells consignment artists' hand painted silk scarves, knitted shawls, cards, and hand crafted jewelry. Anne Murray and Patty Pape offer classes/workshops at the studio in book binding, marbling, and collage. Hours: Thur., Fri., Sat., 11am-6pm, & Sun. 1-6pm. Contact: 336/893-8839 or at ([ArtConnectionsTrade.com](http://ArtConnectionsTrade.com)).

**Blessings**, 823 Reynolda Road, Winston-Salem. **Ongoing** - Featuring works by Marsha Thrift, Christine McCormick and Sharon Grubbs. Their work encompasses original landscapes, figurative works and still life in a contemporary style of realism. Also offering an exhibit of 19th Century Chinese Ancestor Portraits. The show is enhanced by a display

of Chinese silk opera gowns. Hours: Fri.&Sat., 11am-5pm and Sun., 1-4pm. Contact: 336/922-6909.

**Delurk Gallery**, 207 W 6th Street, Winston-Salem. **Ongoing** - An artist run gallery, dedicated to the exposure and sale of current artists' work. Hours: Wed.-Sat., noon-8pm; Sun., noon-6pm; & till 10pm on 1st Fri. Contact: 336/486-3444 or at ([www.delurkgallery.com](http://www.delurkgallery.com)).

**Earthbound Arts**, 610 N. Trade St., Winston-Salem. **Ongoing** - Featuring an unique gallery showcasing the nature-related works of Gordon Jones and Lucy Duncan. Original designs in clay, copper, and stained glass as well as handcrafted herbal soaps, sterling and copper jewelry, block print cards, masks, wind chimes, garden art, clay beads, herbal teas, natural incense, beeswax candles and much more. Hours: Tue.-Sat., 11am-6pm. Contact: 336/773-1043 or e-mail at ([lucy@earthboundarts.com](mailto:lucy@earthboundarts.com)).

**Fiber Company**, 600 N. Trade Street, Winston Salem. **Ongoing** - Fiber Company is a working studio and partnership of five women creating wearable art, home accessories and textile art located in the heart of the Downtown Art District. With over 60 consignment artists, most local artists, Fiber Company offers a wide range of gift items. Hours: Tue., 11am-3pm; Wed.-Fri., 11am-5pm; Sat., 11am-3pm & by appt. Contact: 336/725-5277 or e-mail at ([fibercompany@gmail.com](mailto:fibercompany@gmail.com)).

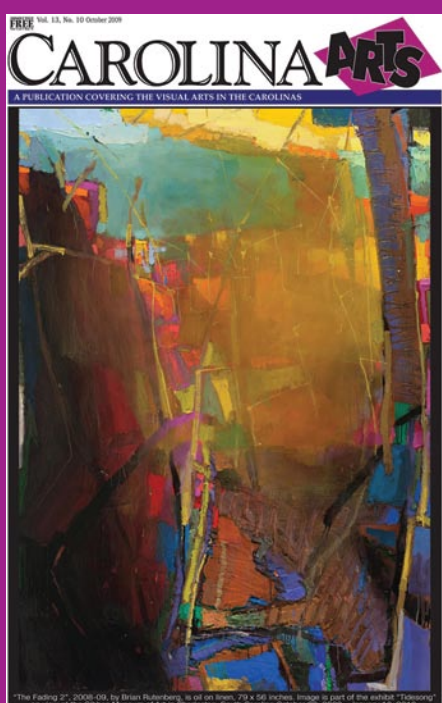
**Island Arts On Trade**, 521 N. Liberty St., Ste. 100, in the Artists On Liberty Building, across from the DADA Community Center, Winston-Salem. **Ongoing** - Featuring visual and functional artwork by gallery artist, Gary Campbell. Also, featuring other multicultural artists and mixed media artwork throughout the year. Hours: Fri.-Sat., 1-5pm or by appt. Contact: 336/722-0510.

**Patina**, 217 W. 6th St., Winston-Salem. **Ongoing** - Featuring a unique shop with art by local potters, craftspeople, and painters. Patina also carries unique clothing, gifts, home accessories and gift baskets. Hours: Tue.-Sat., 10am-6pm. Contact: 336/725-6395 or e-mail at ([patinatore@aol.com](mailto:patinatore@aol.com)).

**The Other Half**, 560 North Trade St., Winston Salem. **Ongoing** - Featuring works by Mary Ann Zotto, Chris Teague, Nic Bernard, Dodie Campbell, Jack Dent, Celeste Chapman-Dent, Ron Propst, Jason Probst, Kathy Townsend and Mike Cowan. Hours: Tue.-Sat., 11am-5pm or by appt. Contact: 336/407-5494 or e-mail at ([peeps321@earthlink.net](mailto:peeps321@earthlink.net)).

**Village Smith Galleries/VSG Fine Arts**, 119 Reynolda Village, near Reynolda House Museum of Art, Winston-Salem. **Ongoing** - American and European watercolors, oils, antique engravings and contemporary works by Gorg, McKnight, Boulanger, Alvar, Nicole Monteran, Stephen White and other gallery artists. National and regional crafts are represented in the fields of ceramic and glass. Hours: Mon.-Sat., 10am-5pm. Contact: 336/723-3653.

**Winterfire Craft Gallery**, 145 Stratford Road, Winston-Salem. **Ongoing** - Featuring pottery by Hank Goodman as well as hand-crafted jewelry, metal sculpture, hand-thrown pottery, art glass, and calligraphy prints. Hours: Mon.-Fri., 10am-6pm; Sat., 10am-5pm & Sun., 11am-5pm. Contact: 336/748-0145.



Visit  
*Carolina Arts*  
on Facebook

Go to this [link](#) and  
"like" us!

