

NC Commercial Galleries

continued from Page 60

Westmoore Pottery, 4622 Busbee Rd., Seagrove. **Ongoing** - Historical redware, salt-glazed stoneware, and green-glazed pottery, especially styles from central NC before 1850 by David and Mary Farrell. Hours: Mon.-Sat., 9am-5pm (closed Dec. 24- Jan. 17). Contact: 910/464-3700 or at (www.westmoorepottery.com).

White Hill Gallery, 407 Highway (15-501), Carthage. **Ongoing** - Featuring works of beautiful pottery, including Southwest, ceramic, hand-painted glassware, wood turning, and paintings in watercolor, oil and pencil. Hours: Tue.-Fri., 10am-6pm; Sat., 10am-5pm; & Sun., 1-5pm. Contact: 910/947-6100.

Whynot Pottery, 1013 Fork Creek Mill Rd., Seagrove. **Ongoing** - Featuring interesting shapes and intriguing glazes. Custom sizes on lamps, vases and bottles by Mark and Meredith Heywood. Hours: Mon.-Sat., 9am-5pm. Contact: 336/873-9276 or at (www.whynotpottery.com).

Williams Pottery, 2170 Dan Road, Robbins. **Ongoing** - Functional pottery in multi-colored as well as decorative glazes. Hours: Tue.-Sat., 10am-5pm.

Windsong Pottery, 6109 Brantley Gordon Rd., Denton. **Ongoing** - Featuring handmade functional stoneware in glazes of floating blue and rainbow by Margie Nance, Matthew Nance, Lydia Nance and other family members. Hours: Mon.-Fri., 9am-5pm. Contact: 336/857-2485 or e-mail at (windsongpottery@yahoo.com).

Wyndham & Brooke Haven Pottery Gallery, 209 East Main St., Seagrove. **Ongoing** - Featuring fine functional high-fired stoneware with rich contemporary glazes by Wyndham and Melanie Dennison. Hours: Mon.-Sat., 9am-5pm & Sun., noon-5pm. Contact: 336/873-7254.

Shelby

Buffalo Creek Gallery, 104 E. Warren Street, Shelby. **Ongoing** - The gallery features paintings, drawings, note cards, polymer clay art, pottery, woodturnings, woodcarvings, jewelry, stained glass, pressed flowers, quilting, weaving and much more! Hours: Mon.-Fri., 10am-5:30pm and Sat., 10am-4pm. Contact: 704/487-0256 or at (www.buffalocreekgallery.com).

Siler City

Against His Will Gallery and Studio, 117 E. Second St., Siler City. **Ongoing** - Featuring handknitted rugs, quality yarn, stunning alpaca fiber in a variety of colors, handmade knitting needles, Fricke spinning wheels as well as very cool mobiles, hand poured environment-friendly candles, and more! Hours: Wed.-Fri., 1-5pm & Sat., 10am-5pm. Contact: 919/742-1122 or at (www.AgainstHisWillStudio.com).

Chatham Camera Club Gallery, 229 N. Chatham Ave., Siler City, NC. **Ongoing** - Featuring works by a diverse group of amateur and professional photographers networked together around the idea of sharing our knowledge and experience with each other, while enjoying our interest in photography. Hours: by chance and the 3rd Fri. from 6-9pm. Contact: (www.chathamcameraclub.org).

Hotel Hadley Studios, 130 N. Chatham Ave., Siler City. **Ongoing** - Featuring works by Kristy Church, Sarah Kuhn and Drucilla Pettibone. We consist of 6 studios and an exhibition space. We will have monthly rotating shows in the gallery space. Hours: 3rd Fri. 6-9pm and by chance and appt. Contact: 919/663-0241 or at (www.hotelhadleystudios.com).

Lakewood Pottery, 11330 Hwy. 64 W., Siler City. **Ongoing** - Featuring crystalline, high-fired porcelain and gold lusters by Ed Weintraub. Hours: Tue.-Sat., 10am-4pm & Sun., noon-4pm. Contact: 919/663-3743.

Person to Person Art Studio/Gallery, 210 N Chatham Ave., Siler City. **Ongoing** - Featuring unique art for interesting people, all created by artist Roger Person. Hours: by appt and on the 3rd Fri., 6-9pm. Contact: 919/663-0982 or e-mail at (person@charter.net).

Raleigh Street Gallery, 120 W. Raleigh St., Siler City. **Ongoing** - Featuring a consortium of many artists from the area painters, sculptors, metal workers, jewelersmiths, basket weavers, soap makers, slate artist, wood workers, - whose works are all on display in a spacious and welcoming atmosphere. Hours: Wed.-Fri., 10am-6pm, by chance or appt. and on 3rd Fri., 6-9pm. Contact: 919/663-6278 or at (www.raleighstreetgallery.com).

raleighstreetgallery.com).

Sparta

Blue Ridge Gallery of Fine Art, 103 Gallery Lane, 15 minutes from downtown Sparta. **Ongoing** - Featuring a variety of artworks by local and regional artists. Hours: Thur.-Sat., 11am-6pm & Sun., 1-6pm, when open - call ahead. Contact: 336/372-1711 (<http://www.blueridgefineart.com>).

Cater Pots Studio, 209 Antioch Church Road, 4 miles from the town of Sparta. **Ongoing** - Husband-&-Wife team, Daniel & Robin Cater create beautiful stoneware pottery in their Blue Ridge mountain studio. Cater Pots are fired to cone 6 oxidation, so all functional pottery is food, dishwasher, microwave, and oven safe. Cater Pots mixes their own glazes and applies them to the bisqueware in attractive combinations by various means including dipping, brushing and spraying. Hours: Mostly Wed.-Sat., 10am-4pm - call ahead. Contact: 336/372-4604 or at (<http://www.caterpots.com>).

Mangum Pottery of Turkey knob, 280 Turkey Hollow Lane, Sparta. **Ongoing** - Featuring pottery and ceramic art by Robin Mangum in a wide variety of function and form. Hours: hours vary so call ahead. Contact: 336/372-5291 or (<http://www.mangumpottery.com>).

Statesville

Village Pot Shop Fine Arts and Crafts Gallery, 248 N. Center St., 2 Blocks North of the Center of town on the right, Statesville. **Ongoing** - Our mission is to provide a showcase for local and regional artists and artisans, providing high-quality decorative and functional arts and crafts to patrons with an eye for the finer things. Our arts and crafts galleries feature handmade jewelry, blown glass, woodwork, regional pottery, metalwork, mosaics, hand-woven fibers, paintings and more. So, whether you are interested in: vases, bowls, paper weights, fanciful ornaments, stained glass, sun-catchers, decorative boxes, exquisite bowls turned from found pieces of wood, each one of a kind, watercolors, baskets, ceramics, fine photography, prints, collages or oil paintings. We also offer classes and workshops by local and regional artists. Hours: Tue.-Fri., 10:30am-5pm & Sat., 10am-4pm. Contact: 704/380-4689.

Sylva

Karcher Stone Carving Studio & Gallery, 260 North Beta Road, off US 74, Sylva. **Ongoing** - Featuring a working studio and gallery with stone carvings by Collene Karcher, executed in marble, alabaster, and limestone with steel and aluminum introduced at times. Hours: by appt only. Contact: 828/586-4813 or at (www.collenekarcher.com).

Tryon

Carri Bass Studio & Gallery, 94 N. Trade Street, Tryon. **Ongoing** - Carri Bass Art studio is located in the heart of Tryon. It is in a wonderful old building with great lighting and a dedicated studio section, in addition to gallery space for monthly art exhibits. Hours: by appt. only. Contact: 864/598-9880 or at (<https://carribass.com/>).

Valdese

Play It Again Records Building, 150 West Main Street, Valdese. **Window Gallery, T - F**. Hours: 24/7. Contact: David Mench by e-mail at (Wagglestone@yahoo.com).

Wadesboro

Olde Mill Gallery & Studios, Lockhart-Taylor Center, 514 N. Washington St., Wadesboro. **Ongoing** - At the gallery visitors will see artwork by regional artists which includes: original paintings in oil, acrylic & watercolor, that range from landscapes to abstracts; photography; works in copper and copper repousse; ceramic creations, custom sculptured and functional; art glass jewelry, jewelry made from beads of Swarovski crystal; hand-stitched quilts of exquisite designs; hand painted goblets, pitchers and vases; wood sculptures and turnings, and more. Hours: Mon.-Thur., 10am-5pm; Fri., 10am-3pm or by appt. Contact: 704/272-5464 or at (www.oldemillgallery.org).

Waxhaw

Stewart's Village Gallery, 116 McDonald St., Waxhaw. **Ongoing** - Featuring pottery by Bill Stewart, as well as works by over 300 other artists including both decorative and functional handmade pieces. The gallery is filled with

pottery, jewelry, wrought iron, garden accents, decorative whimsy and so much more. Hours: Mon.-Sat., 10am-5pm & Sun., 1-5pm. Contact: 704/843-5638 or at (www.stewartsvillagegallery.com).

Waynesville

Balsam Ridge Gallery, 44 North Main Street, Waynesville. **Ongoing** - Fine art gallery featuring paintings of Western NC mountain vistas and beyond. Hours: daily 11am-6pm, but call ahead. Contact: 828/234-1616.

Cedar Hill Gallery, 196 N. Main Street, Waynesville. **Ongoing** - Featuring the art of Gretchen Clasby and 83 incredible artisans. Hours: Mon.-Sat., 10:30am-5:30pm. Contact: 828/421-6688 or at (<https://www.cedarhillstudio.com/>).

Jo Ridge Kelly Fine Art, a gallery and teaching studio, 136 N. Main Street, Waynesville. **Ongoing** - Featuring the painting of Jo Ridge Kelly. Hours: Thur.-Sat., noon-6pm and Sun.-Wed., by chance or appt. Contact: 828/226-0549 or at (www.JoKelley.com).

Moose Crossing's Burl Wood Gallery, 101 N. Main Street, Waynesville. **Ongoing** - Featuring rustic Burl furniture with an elegant finish. Two generations of Metzgers, source, design and craft burl. We are fortunate to have talented craftsmen working with us. It is our pleasure to coordinate efforts as a team. The focus is on the end product as an art piece. Hours: Mon.-Sat., noon-5pm or by appt. Contact: 828/452-2550 or at (<https://burl-gallery.com/products/burl-wood-sculpture>).

T. Pennington Art Gallery, 15 N. Main Street, Waynesville. **Ongoing** - Featuring pencil drawings of local scenery, and landmarks by Teresa Pennington, including originals, prints and gift items. Also framing is available. Hours: Mon.-sat., 10am-5pm. Contact: 828/452.9284 or at (www.tpennington.com).

The Jeweler's Workbench, 80 N. Main St., Waynesville. **Ongoing** - Specializing in fine hand-crafted jewelry, custom design and repair, limited edition watches and jewelry boxes. Featuring award-winning artists of the Great Smoky Mountains and from across the country. Hours: Mon.-Sat., 10am-5:30pm. Contact: 828/456-2260.

Twigs & Leaves, 98 N. Main Street, Waynesville. **Ongoing** - Featuring the nature-related porcelain works with leaves by Kaaren Stoner, as well as other works by regional artists and craftsmen. Hours: Mon.-Sat, 10am-5:30pm. Contact: 828/456-1940 or at (www.twig-sandleaves.com).

Weaverville

Mangum Gallery, 16 North Main Street, Weaverville. **Ongoing** - Featuring functional and decorative pottery dinnerware. Hours: Mon.-Fri., 9am-5pm and Sat., 10am-4pm. Contact: 828/645-4929 or (www.mangumpottery.com).

Miya Gallery, 31 N. Main St., Weaverville. **Ongoing** - The gallery is a new and refreshing addition to the WNC art scene. We exhibit work of over 50 artists: fine jewelry, clay, wood, glass, metal, fiber, photography and two dimensional art. Hours: Tue.-Fri., 10am-6pm; Sat., 10am-5pm & Sun., noon-4pm. Contact: 828-658-9655 or at (www.miyagallery.com).

West Jefferson/Jefferson

Acorn Gallery, 103 Long St., West Jefferson. **Ongoing** - Featuring original works by award winning and nationally exhibited artist Raney Rogers, including wildlife and landscape paintings and prints. Hours: Tue.-Fri., 11am-5pm & Sat., 11am-2pm. Contact: 336/246-3388 or at (www.acorngallery.com).

Ashe Custom Framing & Gallery, 105 S. Jefferson Ave., West Jefferson. **Ongoing** - Featuring a varied selection of originals and prints by local and regional artists. Also, a wide array of pottery and handcrafted wooden vases. Hours: Tue.-Fri., 10am-5pm & Sat., 10am-2pm. Contact: 336/246-2218.

Broomfields Gallery, 414 E. 2nd St, (across from the post office), West Jefferson. **Ongoing** - Featuring an exhibition of works by NC and SC artists in various mediums in a setting of quality antiques. Hours: Tue.-Sat., 11am-5pm. Contact: 336/846-4141 or at (www.broomfieldsgallery.com).

CatchLight Gallery, 118 N Jefferson Avenue, West Jefferson. **Ongoing** - The CatchLight gallery is dedicated solely to the art of photography. In the Spring of 2012, photographer Nicole Robinson decided to create a space where talented photographers would have an opportunity to display and sell their work. A beautiful gallery space grew from a dream into a wonderful reality, evolving into a haven which

became available to both the photographers and the viewing public in the arts district of downtown West Jefferson, NC. Hours: Mon., Thur., Fri., & Sat., 11am-5pm & Sun., 11am-4pm. Contact: 336/846-1551 or at (www.CatchLightGallery.net).

Prack Studio / Sculpture Garden, 431 Sunny-side Park Road, Jefferson. **Ongoing** - Featuring sculptures by Mary-Ann Prack. Hours: open by appt only. Contact: 828/406-7046 or at (www.prackart.com).

Stephen Shoemaker Studio, 113 S. Jefferson Ave., West Jefferson. **Ongoing** - Featuring original works by watercolorist Stephen Shoemaker. Specializing in historic landscapes and paintings of places and events in/of Ashe County and the area. The "Virginia Creeper" train series is particularly popular. Hours: Mon.-Fri., 10am-5pm or by chance. Contact: 336/246-3401.

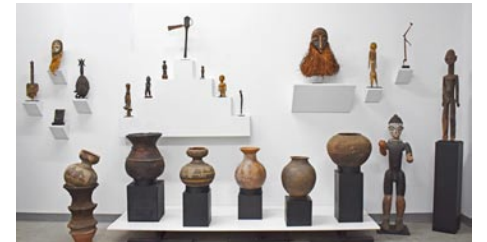
Wilmington

Acme Art Studios, 711 N. 5th Ave., downtown Wilmington. **Ongoing** - Featuring works by Allan Nance, Angela Rowe, Angie Sinclair, Anna Kennedy, Chaz Manacsa, Dick Roberts, Dumay Gorham, Fritz Huber, Gary Breece, Grey Pascual, Karen Crouch, Kristen Crouch, Marshall Milton, M.J. Cunningham, Nicole Nicolle, Pam Toll, Mark Weber, Arrow Ross, and Mike Johnson. Hours: are by appt. only. Contact: Dick Roberts at 910/232-0027, e-mail (dickdow64@gmail.com) or Angela Rowe at (arowe@ec.rr.com) or at (www.acme-art-studios.com).

Art In Bloom, 210 Princess Street, Wilmington. **Ongoing** - The gallery focuses upon international and national artists including many artists from the Bloom family and local favorites such as Elizabeth Darrow (paintings) and Matthew Leavell (sculpture). Guests artists are featured every 3-4 months. Visitors will find a mixture of traditional and contemporary paintings, drawings, photography, sculpture, jewelry, ceramics, fabric, and objects found during the renovation of the building: horse shoes, bottles, papers, wagon parts, utensils, glass, and ceramics (c. 1910-1920). Extended Holiday Hours: Mon.-Thur., 10am-4pm; Fri. & Sat., 10am-5pm; and Sun., noon-4pm. Contact: 484/885-3037 or at (<https://aibgallery.com/>).

Beck Fine Art, 545 Castle Street, Wilmington. **Ongoing** - features some of the best in national talent for representational and abstract art. Being the main gallery and home of award-winning artist, Dan Beck, the gallery not only represents some of Dan's best work but other artists with exceptional talent and accomplished art careers. Hours: Tue.-Sat., 11am-5pm. Contact: 910/264-2392 or at (www.beckfineart.com).

Bottega Art & Wine Gallery, 208 N. Front St., Wilmington. **Ongoing** - Featuring works by regional and international artists in a variety of media. Hours: Tue.-Wed., 1-10pm and Thur-Sat., 1pm-midnight. Contact: 910/763-3737 or at (www.bottegageallery.com).



Works by Charles Jones African Art

Charles Jones African Art, 311 Judges Road, Unit 6-E, Wilmington. **Ongoing** - A gallery dedicated to the traditional arts of West and Central Africa, with over 35 years experience in building fine collections for collectors and museums. Inquiries are welcome. Consultation, research and appraisal services available for individuals, estates and institutions by ISA certified appraiser, Maura Kropke. Exhibitions arranged and curated with essays by major scholars. Hours: Mon.-Fri., 7:30am-4:30pm. Contact: 910/794-3060 or at (<https://charlesjonesafricanart.com/>).

Checker Cab Gallery, 130 N. Front Street, Suite 102, Wilmington. **Ongoing** - The gallery is a full-service gallery featuring abstract and representational artwork serving collectors of all levels. It is downtown Wilmington's most dynamic gallery featuring original artwork by regional emerging and established artists, offering the public the opportunity to get to know and understand the artists directly. Hours: Tue.-Thur., noon-7pm; Fri.-Sat., noon-9pm; & Sun., noon-7pm. Contact: 919/270-1711 or at (www.checkercabproductions.com).

ERA 20th Century Furniture and Art Gallery, 523 South 3rd St., Wilmington. **Ongoing** - Inviting emerging artists of all sorts, to fill the quiet space with cutting edge art that not only is pleasant to view, but also thought-provoking.

continued on Page 62