

# SC Commercial Galleries

continued from Page 37

**Michael Story Studio/Gallery**, 116 Brook Trout Ct., Lexington. **Ongoing** - Featuring traditional landscapes in oil & pastel by Michael Story. Giclee & reproduction prints. Hours by appt. only. Contact: 803/356-4268 or at ([www.michaelstory.com](http://www.michaelstory.com)).

**Mike Brown Contemporary**, (formerly if ARTS) 1223 Lincoln St., Columbia. **Ongoing** - Featuring works by Roland Albert, Carl Blair, Michael Brodeur, Michaela Pilar Brown, Beverly Buchanan, Ashlynn Browning, James Busby, Michael Cassidy, Steven Chapp, Stephen Chesley, Diane Kilgore Condon, Jeff Donovan, Mark Flowers, Mary Gilkerson, Klaus Hartmann, Leslie Hinton, Sjaak Korsten, Peter Lenzo, Reiner Mahrlein, Sam Middleton, Jaime Misenheimer, Philip Morsberger, Dorothy Netherland, Marcelo Novo, Jay Owens, Hannes Postma, Anna Redwine, Paul Reed, Edward Rice, Silvia Rudolf, Kees Salentijn, Laura Spong, Tom Stanley, Leo Twiggs, Katie Walker, David Yaghjian and Aggie Zed. Hours: Mon.-Fri., 11am-7pm and Sat., 11am-5pm. Contact: 803/446-3399 or e-mail to ([assistant@mikebrowncontemporary.com](mailto:assistant@mikebrowncontemporary.com)).

**Mouse House, Inc/Susan Lenz Studio**, 2123 Park St. (historic Elmwood Park), Columbia. **Ongoing** - Featuring the working studio, original fibers, and mixed-media artwork by Susan Lenz. After 14 years at Vista Studios, Susan will now be working at Mouse House. Also offering custom picture framing as well as a wide selection of antiquarian prints and beveled mirrors. Hours: Mon.-Fri., 9:30am-5pm & most Sat., 10am-2 pm. Contact: 803/254-0842; at ([www.susanlenz.com](http://www.susanlenz.com)); or ([www.mousehouseinc.blogspot.com](http://www.mousehouseinc.blogspot.com)).



Work by Noelle Brault

**Noelle Brault Fine Art**, 2305 Park Street, (historic Elmwood Park) Columbia. **Ongoing** - Noelle Brault is an impressionist artist who utilizes a unique blending of vibrant colors to capture the beautiful light and shadow found in South Carolina's Lowcountry and her native home of Columbia. Hours: by appt. only. Contact: 803/254-3284 or at (<http://www.noellebrault.com>).

**One Eared Cow Glass Gallery & Studio**, 1001 Huger St., Columbia. **Ongoing** - Handblown glass by Tom Lockart and crew, including perfume bottles, ornaments, vases, sculpture, bowls, and paperweights, in all price ranges. Hours: Mon.-Fri., 9am-5pm & Sat., 10am-4pm. Contact: 803/254-2444 or at ([www.oneearedcow.com](http://www.oneearedcow.com)).

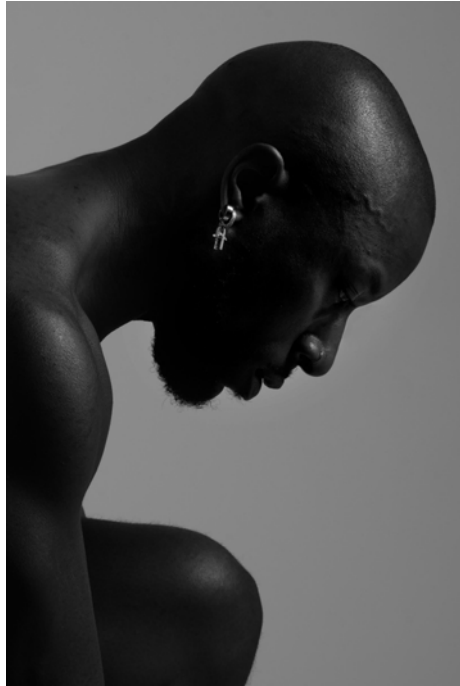
**Over the Mantel Gallery**, 3142 Carlisle Street, Columbia. **Ongoing** - OTM Gallery opened in Columbia, South Carolina in 2013 and has since earned awards for "Best Columbia Metropolitan Art Gallery" (2018) and "Best Columbia Metropolitan Gallery for Local Art" (2019). OTM is owned by Julia Moore and operated by Julie Coffey. Its purpose is to offer original artwork to the community at affordable prices. OTM brokers approximately 50 extremely talented artists most of whom maintain residences in the southern states of the US. Hours: Tue.-Sat., 11am-5pm. Contact: 803/719-1713 or at (<https://overthemantel.com/>).

**Prompt Designs Art Gallery**, 3041 N. Main St., near where the train trestle crosses Main St., Columbia. **Ongoing** - Featuring original oils and giclees by Porter O'Brien Dodd. Hours: Mon.-Sat., 10am-6pm. Contact: 803/252-2927 or e-mail at ([promptdesigns@bellsouth.net](mailto:promptdesigns@bellsouth.net)).

**Rob Shaw Gallery and Framing**, 324 State Street, West Columbia. **Ongoing** - The gallery features palette knife paintings by Rob Shaw as well as rotating shows from local and national artists. I have included a calendar for upcoming artists and events on my website. Hours: Mon.-Fri., 10am-6pm & Sat., 11am-4pm. Contact: 803/369-3159 or at ([www.robshawgallery.com](http://www.robshawgallery.com)).

**State & Frink**, 2025 State Street, Cayce. **Ongoing** - A rental event space, work space & gallery. Featuring works from members of the Cayce Arts Guild. Hours: by appt. only. Contact: Ashley Hunter by e-mail at ([ahunter@mpastrat](mailto:ahunter@mpastrat)

[egies.com](http://egies.com)) or at ([Stateandfrink.com](http://Stateandfrink.com)).



Work by Gerry Melendez

**Stormwater Studios**, 413 Pendleton Street, behind One Eared Cow Glass Gallery & Studio and Lewis + Clark Gallery, Columbia. **Main Gallery, Feb. 25 - Mar. 5** - "WHOLE: Photography by Gerry Melendez". Receptions will be held on Feb. 25, from 6-9pm and on Mar. 5, from noon-3pm. A black and white photography exhibit celebrating diversity. "WHOLE" brings people together from all walks of life, backgrounds, ages, and ethnicities. When stripped-down we are all more alike than we are different. Melendez is an award-winning Salvadorian photographer with a career spanning more than three decades. He recently received a Southeastern Emmy for his short documentary, "Donna's Story". **SVAD Studio, Feb. 13 - 24** - "Stormwater Collaborative Residency Exhibition". A reception and open studio night will be held on Feb. 16, from 5-7pm. Join us at the SVAD Studio at Stormwater to view artwork created by student resident artists during our inaugural Stormwater Collaborative Residency program. Undergraduate resident artists were tasked with producing work related to the College of Arts and Science's Spring 2023 theme semester, which is devoted to exploring the creative power of play. **Feb. 27 - Apr. 14** - "Faculty Organized Thesis/Class Exhibitions". **Ongoing** - Resident artists include: Eileen Blyth, Stephen Chesley, Gerard Erley, Heidi Darr-Hope, Pat Gilmartin, Robert Kennedy, Sharon Licata, Michel McNinch, Kirkland Smith, and David Yaghjian. Hours: Wed.-Sat., 10am-5pm; Sun. 1-4pm or by appt. Contact: at ([www.stormwaterstudios.org](http://www.stormwaterstudios.org)).

**The TRAC Gallery & Studio**, 140 State Street, West Columbia. **Ongoing** - Founded in 2016, Twin Rabbit Artist Collective came together in response to a need for something better for artists and art lovers in Columbia, SC. The competition for outstanding artwork and teaching positions is fierce, and the TRAC is all about giving working artists a landing pad, a launching site to help further their professional careers as both artists and educators. We knew the best way to help local artists and our community was to create a place just for that purpose. We are local with a network of galleries across the United States, working to make a difference for artists, art lovers, and our community. Hours: Wed.-Fri., noon-7pm; Sat., noon-5pm & Sun., noon-4pm. Contact: 803/381-0498 or at ([www.thetracgalleries.com](http://www.thetracgalleries.com)).

**Village Artists**, Village at Sandhill, 631-8 Promenade Place, next door to Panera, off Two Notch and Clemson Rds., near I-20, Columbia. **Ongoing** - The gallery features the works of 28 local artists offering: workshops, monthly shows and exhibits. Hours: Mon.-Sat., 10am-9pm & Sun., noon-6pm. Contact: 803/699-8886.

**Vista Art & Frame**, 1752 Airport Blvd., Cayce. **Ongoing** - Featuring paintings of the South by Stephen O. Gunter. Hours: M.-Thur., 10am-6pm; Fri., 10am-4pm; & Sat., 10am-2pm. Contact: 803/794-7252 or at ([www.vistaart.com](http://www.vistaart.com)).

ALTERNATE ART SPACES - Columbia **Grapes and Gallery**, 1113 Taylor Street, across the street from Oliver's mission, Columbia. **Ongoing** - Serving craft beer, wine bar and painting studio. Hours: Wed.-Fri., 4-9:30pm & Sat., noon-9:30pm. Contact: 803/728-1278 or visit ([www.grapesandgallery.com](http://www.grapesandgallery.com)).

## Conway

**Conway Glass Center**, 708 12th Ave., historic Creel Oil building Conway. **Ongoing** - Featuring an open-air gallery and glass educational



Work by Conway Glass

studio dedicated to raising the awareness of the visual arts in Conway and Horry County, SC. Hours: Tues., Thurs. & Fri., by appt. 10am-5pm; & Wed., 10am-5pm, no appt. needed. We have self-service pickup available 24 hours a day. Contact: 843/248-3558, or at ([www.conwayglass.com](http://www.conwayglass.com)).

## Denmark

**Jim Harrison Gallery**, One South Main Street, intersection of Main Street and Highway 78, Denmark. **Ongoing** - Featuring works by the late Jim Harrison including original paintings, limited edition prints and a variety of unlimited edition reproductions, bronzes, etchings and other collectible items from Harrison in his more than thirty-year career as an artist. Hours: Tue., Thur., & Fri., 11am-5pm and Wed. & Sat., 11am-3pm. Contact: 803/793-5796 or at ([www.jimharrison.com](http://www.jimharrison.com)).

## Edgefield

**Jane Bess Pottery LLC**, 206 Lynch St., just off of Main St., around the corner from Glass Images, Edgefield. **Ongoing** - Functional stoneware pottery by artist/owner, Jane Bess. Working pottery studio and retail shop featuring many one-of-a-kind items...wonderful entertaining pieces. Hours: Mon.-Fri., 10am-5pm; Sat., 10am-2pm; or by appt. Contact: 803/637-2434 or at ([www.janebesspottery.com](http://www.janebesspottery.com)).

## Edisto Island

**With These Hands Gallery**, 547 Highway 174, Edisto Island. **Ongoing** - The gallery offers a collection of unique handmade, one-of-a-kind, American craft. Representing over 150 artists, you will find: kaleidoscopes, wind chimes, jewelry, hand blown glass, stained glass, pottery, oil lamps, wooden toys, wooden sculptures & decoys, metal sculpture, fiber to wear, photography, original paintings, giclee's, prints, and more! Winter Hours: Thur.-Sat., 10am-4pm. Contact: 843/869-3509 or at ([www.WithTheseHandsGallery.com](http://www.WithTheseHandsGallery.com)).

## Florence

**Lynda English Gallery-Studio**, 403 Second Loop Rd., Florence. **Ongoing** - Featuring works by local and regional artists in a variety of media. Hours: Mon.-Fri., noon-5pm and by appt. Contact: 843/673-9144 or at ([www.lyndaenglish-studio.net](http://www.lyndaenglish-studio.net)).

**Running Horse Gallery** (Feather Pottery & Interiors, LLC) 928 Old Wallace Gregg Road, Florence. **Ongoing** - Featuring ceramic works by Sasha and Tari Federer. Their artwork is one-of-a-kind, hand crafted, using an array of firing techniques and surface decoration. Hours: 10am-6pm daily, but call first. Contact: 843/992-2178 or e-mail at ([featherpottery@earthlink.net](mailto:featherpottery@earthlink.net)).

## Fort Lawn

**Shops on the Lawn**, 5819 Lancaster Highway, Fort Lawn. **Ongoing** - Shoppers will find the latest in original artwork, home decor and furniture, clothing and accessories, vintage goods, and more treasures in a bright and friendly atmosphere. Lancaster County Chamber of Commerce will welcome "Shops" into its membership with a ribbon cutting at 11am and refreshments will be available to shoppers throughout the day. award-winning artists from throughout the region. Think Bob Doster metal sculpture and collectibles, Dianne Mahaffee watercolors and pottery, handcrafted candles by "Willow Oak Wicks" alongside handwoven baskets by Carolyn Kemp and the Fort Lawn Basket Cases Cooperative. There is no shortage to the number of artists represented in this artist-owned shopping destination, including custom floral designs and upcycled home decor by owner Deb Robbins. DIY'ers will find a great selection of Dixie Belle paints and

supplies, along with tips and guides for first-time up-cyclers. Hours: Tue.-Sat., 10am-6pm. Contact: 803/872-8000, e-mail at ([debrarobbins19@gmail.com](mailto:debrarobbins19@gmail.com)) or follow on Facebook at (<https://www.facebook.com/shopsonthelawn>).

## Fort Mill/ Tega Cay

**Olive's**, 229 Main Street, Fort Mill. **Ongoing** - Olive's exhibits local artist in the Carolina's. It also has a handmade by local artisan, gift shop, as well as a working ceramic studio. Olive's offers workshops and regular classes as well as ceramic parties and events. Presently works by Dottie Leatherwood, Todd Baxter, Rachel Ohls and proprietor Debbie Whitsett among others are being exhibited. Hours: Tue.-Sat., noon-6pm or studio open until 8:30pm as reserved. Contact: 704/301-2619 or at ([www.olivesmudpuddle.com](http://www.olivesmudpuddle.com)).

## Fountain Inn

**The Back Door Gallery**, 107B South Main Street, located behind Sweet Catherine's Restaurant, Fountain Inn. **Ongoing** - The gallery has twenty-three 2D and 3D artists from Fountain Inn and nearby towns. Mediums are oil, acrylic, watercolor, colored pencil, pastel, oil pastel, acrylic and epoxy resins, wood and ceramics. We have more than 270 pieces of original art and handicrafts and hundreds of prints and cards. Our exhibitors are Ruth Burley, Pamela Esteppe Brock, Gayle Caregnato, Mac Clarkson, Gerri Green, Sue Gunst, Shradha Gupta, Karen Holmes, Gretchen Hunter, MJ King, Kate Krause, Joann Krutainis, Leslie Leuthold, Dave Lowery, Joseph Lowery, Janette Marvin, Gayle Miller, Ann Poole, Nancy Reynolds, Guy Roberge, Debi Shafer, Rita Smith and Tony Williams. Hours: Tue.-Sat., 11am-6pm. The gallery is available for rental all day on Sundays and Mondays, and after 6 PM Wednesday through Saturday. Contact: Joseph Lowery, gallery owner, operator and artist at 203/994-8446 or at (<https://backdoorartgallery.com/>).

## Georgetown

**Art Harbor Gallery**, 912 Front Street, Georgetown. **Ongoing** - a gallery of contemporary fine art! We feature original artwork by local and regional artists in a variety of media and styles. It is our goal to highlight these talented artists and help bring attention to Georgetown, SC, as a community and arts destination. Hours: Wed.-Sat., 10am-4pm and Sun., 10am-3pm. Contact 843/608-9269 or at ([artharbor.org](http://artharbor.org)).

**Calk Havens**, Front Street, next to the Rice Museum, Georgetown. **Ongoing** - Featuring works by Betsy Havens and James Calk. The atelier of James and Betsy is located in a historic building, circa 1842, in the beautiful historic district of Georgetown, SC. Hours: by appt. only. Contact: 803-351-7668 or at ([www.calkhavensgallery.com](http://www.calkhavensgallery.com)).

**Prince George Framing Co.**, 805 Front St., Georgetown. **Ongoing** - Featuring superior custom framing, a broad selection of quality prints and posters and great customer service. Hours: Mon.-Fri., 10am-5pm & Sat., 10am-2pm. Contact: 843/527-8413 or at (<http://www.princegeorgeframing.com/>).

**The Georgetown Art Gallery**, 705 Front Street, Georgetown. **Ongoing** - Original works and prints by 20 artists, including: Sandra Anderson, Debanjana Bhattacharjee, Sissy Carroll, Jonnie Cowan, Lori Dauphin, Susan Duke, Dorothy Ellis, Judy Maring, Amy Marr, Katherine W. Patrick, Tina Proctor, Paula Robertson, Kurt Russell, Sharon Sorrels, Terry Strawser, Kathleen Stuart, Jef Sturm, Joe Tempel, Jane Thomas and Susan Tiller. Hours: Mon.-Sat., 10am-5pm & Sun. 11:30-4:30pm. Contact: 843/527-7711 or at (<https://www.georgetownartists.com>).

## Greenville Area

**Downtown Greenville** - "First Fridays," featuring a gallery crawl presented on the first Fri, of the month from 6-9pm. Visit galleries throughout the downtown area. For info: ([www.fristfridaysonline.com](http://www.fristfridaysonline.com)).

**Art Crossing at River Place**, 300 River Street, @ S. Main, along the Reedy River, Greenville, SC, or at ([www.artcrossing.org](http://www.artcrossing.org)). **Ongoing** - This site includes a number of artists' studios which change too often to list them. Hours: Tuesday thru Saturday, 11am to 5pm and on 1st Fri., from 6-9pm. Contact: at ([www.artcrossing.org](http://www.artcrossing.org)).

**Art & Light**, 16 Aiken Street, Greenville. **Through Feb. 25** - Featuring works by Rachael Van Dyke. A reception will be held on Feb. 3, from 6-8pm. Van Dyke is no stranger to travel, particularly when it comes to artist residencies within the United States and abroad. With each new destination, she explores her surroundings with intention, drawing inspiration from every

continued on Page 39