

Waterworks Visual Arts Center

continued from Page 40



Work by Mark Gordon

Clay artist, Mark Gordon, Wilson, NC, has worked in clay for over 30 years, beginning with wheel throwing and extending into modular assembled clay sculptures and mixed media installations. He has traveled to 20 countries, observing and documenting pottery-making traditions throughout the Mediterranean and Caribbean. In the early 1980s, Gordon developed the pottery program at Altos de Chavon in La Romana, Dominican Republic and was a 1991 Fulbright lecturer at the Universidad Nacional in Obera, Argentina.

Gordon's work is exhibited regionally and nationally in galleries, colleges, universities, and museums. He has served on various state review committees for college and university art education programs. He was a 6-year peer review committee member in visual arts for the Fulbright Scholar program of the Council for International Exchange of Scholars. As an Associate Professor of Art, Gordon teaches ceramics, art education methods, sculpture, art portfolio, and first-year seminar at Barton College in Wilson, NC. He also directs the College's regional sponsorship of The Scholastic Art Awards for Eastern and Central North Carolina.

Gordon states, "My work explores inherent properties of clay transformed through the kiln's incandescent energy. I approach claywork as experimental creation, pulling form out of inchoate matter, seeking new direction through variation. Inspiration comes to me through nature, plant growth, machinery, scrap yards, animal skeletons, and international travel."

Gordon received his BA from Oberlin College and his MFA in Studio Art from Ohio State University.

Isaac Payne grew up in Tacoma, WA, but currently resides in Charlotte, NC. His new work depicts ambiguous figures and places that come from one's relationship to architecture as well as estrangement from, and connection to, nature in the modern land/cityscape. Payne uses draftsmanship and a range of drawing and painting media to create images of architectural environments. His work explores the pedestrian views of modern cityscapes through draftsmanship, a subtle palette of painting and drawing media, and layered paper surfaces.

"My drawings have incorporated elements of stacked and layered papers and how this process relates to architectural imagery," says Payne.

Payne received his BFA in Painting from Cleveland Institute and his MFA in Painting and Sculpture from City University of New York at Queens College. He is an adjunct art professor at Wingate University and Central Piedmont Community College. He has received numerous awards and his work

has been widely exhibited across the United States.

A native of South Carolina, Charlotte artist Patricia Steele Raible integrates painting with markings, textures, images, and words to narrate her stories. Her body of work, *Change Orders: Building and Refining Life* focuses on life's facades and how we create or build our lives, using the symbols and words of architecture.

"We build the architecture of our lives much like an architect designs a residential envelope," says Raible. "My series on architecture draws the parallels and tests the soundness of the structure in the lives we make. My work suggests inner thoughts and feelings, expressed as surface and texture – built up, carved out, and worn away; all of which provides a glimpse of the more vulnerable surface beneath."

The multi-layered surfaces of Raible's work are created and painted using wooden cradles instead of gallery-wrapped canvas, and joint compound instead of gesso to build more luxurious textures and deeper layers. A portion is covered with glazes and images. Often a portion is then sanded away and another layer is added until the entire surface tells the story.



Work by Patricia Steele Raible

Raible received her BA from the University of South Carolina and her MA from the University of Tennessee. Primarily a self-taught artist, she has taken workshops in drawing, watercolor, photography, printmaking, and collage. Raible recently completed a residency as an affiliate at the McColl Center for Visual Art. Her work has been widely exhibited in North Carolina, South Carolina, Tennessee, and Georgia.

Also on view is *Celebrating Rowan County's Young Artists* in the Young People's Gallery. Now in its 30th year, this rotating display of artwork features the works of nearly 800 students representing Salisbury-Rowan County's public, independent, and home-schooled students. These exhibitions celebrate both the outstanding efforts of the art specialists who teach the creative process and the extraordinary talents of our county's youth.

A reception to honor the students and their families, the art specialists, and school administrators is held during each exhibition rotation.

The exhibition schedule is: Independent and Home Schools, on view through Mar. 6; Rowan-Salisbury Elementary Schools, on view from Mar. 11 – 27 (Reception Mar. 21, from 5-6:30pm); Rowan-Salisbury Middle Schools, on view from Mar. 30 – Apr. 17 (Reception April 11, from 5-6:30pm); and Rowan-Salisbury High Schools, on view from April 20 – May 11 (Reception May 2, from 5-6:30pm).

Waterworks Visual Arts Center is accredited by the American Alliance of Museums.

For further information check our NC Institutional Gallery listings, call the Center at 704/636-1882 or visit (www.waterworks.org).

Hickory Museum of Art in Hickory, NC, Offers work by Barbara Fisher

The Hickory Museum of Art in Hickory, NC, is presenting the work of Asheville, NC, painter Barbara Fisher. *Spontaneous Intention* spans two galleries on the Museum's first floor and runs from Mar. 23 through June 23, 2013.

The paintings in *Spontaneous Intention* explore the history of process and transformation, and continually remind the

viewer of the inevitability of change and the impermanence inherent in all things. The wood surfaces are sanded, scribbled on, painted over, wiped off and otherwise distressed. The paintings are worked over a long period of time, giving the appearance of old walls that have been written and drawn on for years. The process

continued above on next column to the right

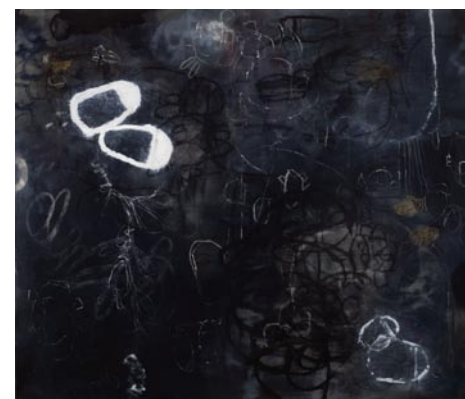
becomes the narrative and speaks to the idea of the inevitability of change and the impermanence inherent in all things.

The artist writes, "The essence of my creative inquiry is to dissect and examine again and again perceptions of truth, reality, and the Self that derive from external sources, turning that experience into a visual record."



Insight by Barbara Fisher

Fisher was born in New York City, educated in Colorado and California, and lived for many years on the West coast before settling in Asheville, NC, in 1998. Her work has been exhibited in solo shows throughout the country, including the de Saisset Museum (CA), Bank of



Long Story Short by Barbara Fisher

America World Headquarters (CA), The National Institutes of Health (MD) and The Washington Cancer Center (DC) as well as in many galleries. Her work can be found in the collections of Capital One (VA), Western NC University Art Museum (NC), The Asheville Art Museum (NC), First Charter Bank (NC), Bank of America (CA), National Institutes of Health (MD) and the University of NC Hospitals (NC).

This exhibition is presented in conjunction with the Museum's Gifford Gallery Local Artist Series.

For further information check our NC Institutional Gallery listings, call the Museum at 828/327-8576 or visit (www.hickoryart.org).

Arts Council of York County in Rock Hill, SC, Features Youth Art Selected by Teachers

The Arts Council of York County and Rock Hill schools present the annual *Teachers' Choice Youth Art Exhibition*, featuring selected artwork by Rock Hill students from high, middle, and elementary school. The exhibition has been created in honor of Youth Art Month, and will be on display in all three galleries at the Center for the Arts in Rock Hill, SC, through Mar. 17, 2013. A free, public reception is scheduled to be held on Thursday, Mar. 7, starting at 6pm during which, students will be awarded for mixed media, painting, drawing, and sculpture.

Becky Ramsey serves as the juror for this year's exhibition. Ramsey recently retired from the Rock Hill School District after serving as Oakdale Elementary School's visual art specialist for the past 24 years. She holds a Bachelor of Arts in Art Education and a Master of Secondary Education with a concentration in Art Education from Winthrop University. Ramsey was commissioned by Winthrop to design and create the school's first ceremonial mace.

Ramsey works from her studio in the Gettys Art Center with a variety of media to create drawings, paintings, collages, sculpture, and jewelry. She is also an avid photographer who draws inspiration from the beauty of Lake Wylie and the SC coast. Her artwork has been included in several recent exhibits at The Center for the Arts and at York Tech. Her drawings, sculpture, and photography have won



Work by Victoria Burdette

awards in various juried competitions and can be found in many private collections. Ramsey is a member of the National Art Ed. Association, the SC Art Ed. Association, the SC Watermedia Society, the SC Arts Alliance, and the Arts Council of York County.

Springs Creative and Derick and Elliott Close are official sponsors of the *Teachers' Choice Youth Art Exhibition*.

For further information check our SC Institutional Gallery listings, call the Arts Council at 803/328-2787 or visit (www.yorkcountyarts.org).

The Civic & Cultural Arts Center of Pineville, NC, Offers Exhibiton that Celebrates Women's Art

The Civic & Cultural Arts Center of Pineville, NC, will present *Beyond the Curve: Celebrating Women's Vision*, an exhibit featuring works of regional female artists, on view from Mar. 22 through Apr. 26, 2013. A reception will be held on Mar. 22, from 6:30-9:30pm.

"The intent of this particular art show is to elevate awareness and celebrate the creativity of female artists," said Lee Baumgarten, CCAC's executive director. "We all view the world differently, based on our individual experiences, and it's no secret that men and women have unique perspectives. This show provides insight into how a number of local female artists see the world. If you're a woman or if you have women in your life, you won't want to miss this."

Featured artists include: Rosalia Torres-Weiner, painting; Teresa Overcash Holmeyer, mosaics; Deborah Triplett, photography; Ruth Ava Lyons, painting; Harriet Marshall Goode, painting; Wanda Steppe, painting; Jessica Jordon, painting; Tina Alberni, painting; Kathy Manzella, mosaics; Lambeth Marshall, pottery; and Denise Torrance, silk painting, mosaics.

The Civic & Cultural Arts Center (CCAC), in South Mecklenburg County, is a 501(c)(3) not-for-profit, volunteer based, civic organization which exists to provide access to the arts for all individuals regardless of experience, age, ethnicity or gender.

For more info check our NC Institutional Gallery listings, call the Center at 704/889-2434 or visit (www.ccacpineville.org).

Carolina Arts, March 2013 - Page 41