

Elder Gallery in Charlotte, NC

continued from Page 23

Elder Gallery's exhibition will feature paintings created outside her studios in Massachusetts and Vermont, as well as in Italy, Pennsylvania and Arizona. The gallery encourages artists of varying levels of proficiency to take advantage of hearing Armstrong speak about her work during the opening reception, as well as during a lunch with the artist earlier in the day. Details will be listed on the gallery's website.

Armstrong offers the following statement, "I am interested in the light and how it affects color, how it feels, how it affects constellations of trees, sky, and ground. I want the painting to stay a landscape, to be in a tradition of landscape painting. I want it to be formal—to be settled and separate from the emotional jumble that might inspire it. But I want it to carry the power of color and light in its composition."

"To get what you see you cannot paint what you see. It's a battle between what you see and what you know. I usually paint the same landscape repeatedly. I go for the whole each time. The painting can

only be one way at a particular moment. I try to put it down as accurately as possible, to concentrate on the landscape, not the painting. Yet I know I'm improvising, taking what I need. If you're able to let go in a painting it's like letting go in sleep, you give yourself up to it and things are revealed."

Armstrong's paintings have been exhibited in Europe and throughout the United States. Among her activities she has served as visiting artist and/or critic at Pennsylvania Academy of Fine Arts; American Academy in Rome, Italy; Dartmouth College; American University; Western Carolina University; Smith College; Massachusetts College of Art; Rhode Island School of Design; Chicago Art Institute; and the University of South Carolina. Her work is included in numerous corporate, private and museum collections.

For further information check our NC Commercial Gallery listings, call the gallery at 704/370-6337 or visit (www.elderart.com).

New Exhibits to open at USC Lancaster's Native American Studies Center in Lancaster, SC, for 2017 Studies Week - Mar. 13-18

The University of South Carolina Lancaster's Native American Studies Center (NASC) will open several new exhibits during Native American Studies Week 2017 with numerous related events throughout the week of Mar. 13-18, 2017, in Lancaster, SC.

On Thursday, Mar. 16, at 1:30pm, will be the opening of *Piedmont American Indian Association's Tribal Exhibit*. Members of the Piedmont American Indian Association - Lower Eastern Cherokee Nation of South Carolina have put together an exhibit that represents their tribe, history, and culture that will be on display in the Duke Energy Gallery, through Mar. 1, 2018. Curated by Chief Gene Norris and Victoria Norris, this exhibit is the second at the Center to be curated by one of the South Carolina tribes.

On Friday, Mar. 17, from noon-1pm, the monthly Lunch and Learn Lecture Series, held at the Old Presbyterian Church--Cultural Arts Center in Lancaster, will host nationally recognized prehistoric archaeologist Dr. Kenneth E. Sassaman; Hyatt and Cici Brown Professor of Florida Archaeology; at the University of Florida. Archaeology of the Southeastern Archaic Breaks New Ground.

On Friday, Mar. 17, from 1:30-2:30pm, will be the opening of the *Share a Little of that Human Touch: The Prehistory of South Carolina*. This exhibit will showcase the findings from the Johannes Kolb Archaeology and Education Project as well as other important sites in South Carolina such as Topper and the Fig Island Shell Ring. The exhibition will be on view at the Native American Studies Center.

On Friday, Mar. 17, from 3:00-4:30pm, the Native American Studies Week Lecture by Dr. David G. Anderson, University



David G. Anderson in the field

of Tennessee, a nationally recognized prehistoric archaeologist, will take place at the Old Presbyterian Church--Cultural Arts Center.

On Saturday, Mar. 18, from 9am-4pm, will be the 2017 Native American Studies Festival at the Native American Studies Center. We will host our Annual Native American Festival at the NASC with Native American arts and crafts vendors, Native American music, primitive technology demonstrations and exhibit tours.

All events are free and open to the public. All locations are within easy walking distance of NASC within Lancaster's Cultural Arts District.

Major funding for these events came from University of South Carolina, USC Lancaster Office of the Dean, Humanities Council SC, Duke Energy, and the Lancaster County School District.

For further information check our SC Institutional Gallery listings, call the Center at 803-313-7172 or visit (<http://us-clanaster.sc.edu/NAS/index.html>).

Columbia Museum of Art in Columbia, SC, Features Works by Salvador Dalí

The Columbia Museum of Art in Columbia, SC, will present *Salvador Dalí's Fantastical Fairy Tales*, on view from Mar. 11 through May 21, 2017.

The exhibition explores the connections between art and literature through the lens of the artist's signature playfulness, inventiveness, and fine draftsmanship. Featuring 36 colorful prints from The Dalí Museum, this whimsical exhibition showcases his illustrations for literary classics including *Alice's Adventures in Wonderland*, *Don Quixote*, and the tales of Hans Christian Andersen.

Clever, quirky, and cutting-edge, Dalí is one of the great artists of the 20th century. He was the most famous and infamous proponent of surrealism, a literary and artistic movement that strove to liberate the subconscious mind from the oppression of rational thought. Championing the power of personal imagination, surrealists believed that dreams were as real as reality and that art created from visions could be as insightful as realism, if not more so. Dalí's colorful personality, prodigious talent, love of publicity, and distinct brand of cheerful

continued on Page 25



CALL FOR ENTRIES

ENTRY DEADLINE IS MARCH 17, 2017

BIENNALE

NATIONAL JURIED EXHIBITION 2017

Art League of Hilton Head invites you to enter the 25th edition of our BIENNALE, National Juried Exhibition, held every other year across multiple media types. Over \$7000 in cash prizes will be awarded.

All works of art selected by jurors will be on display from May 2-31, 2017 at Art League Gallery inside Arts Center of Coastal Carolina on Hilton Head Island, South Carolina. This art gallery provides the finest exhibit space with high tourist and community visibility.

BIENNALE Judge Susan Mayfield is an award-winning artist known for her use of color and light in pastel and oils.

MEDIA CATEGORIES: Oil or Acrylic on canvas or board, Watermedia--watercolor or acrylic on paper under plexiglass, Pastel, Mixed Media--Clear use of two or more materials on any surface, Three-dimensional art, Photography -- digital or film, All other -- Including drawing (graphite, color pencil, charcoal, etc.) and original prints lithographs, etchings, monoprints, woodcuts, etc.

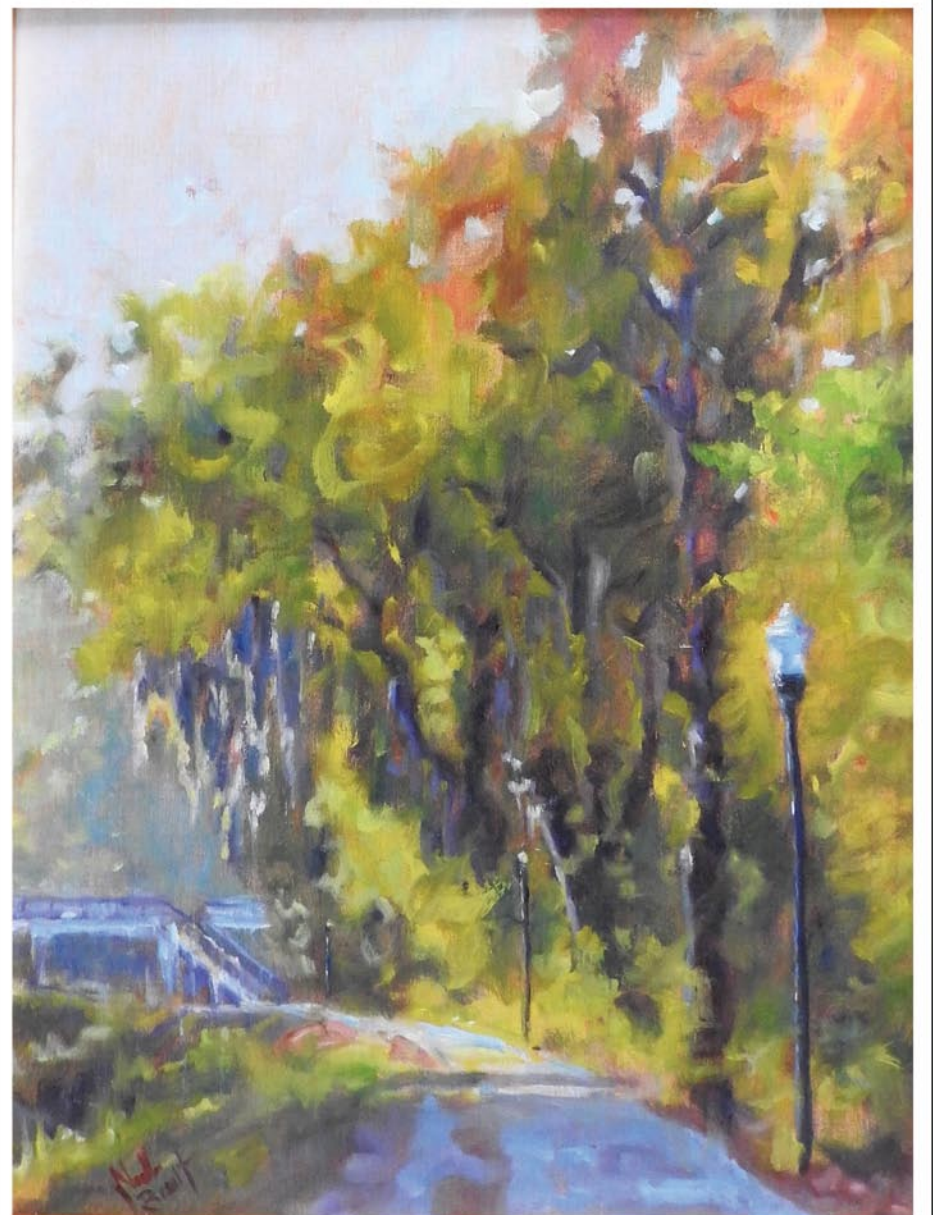
Excludes giclees, any photo reproductive process or computer art.

FOR MORE INFORMATION AND TO ENTER THE 2017 BIENNALE National Juried Art Exhibition, go to callforentry.org or [click here](#).

Entry Deadline: March 17, 2017

All entrants will be notified by March 31, 2017

NOELLE BRAULT FINE ART



"EARLY MORNING STROLL ON THE CANAL" -- OIL ON LINEN

www.noellebrault.com

Columbia, SC Studio Visits (by Appointment Only)
(803)254-3284

