

Wilson Arts Center in Wilson, NC

continued from Page 33

ers Photography living in Rocky Mount, NC, and 2015 marked the 25th year he has been in business as a professional photographer. In May of 2016 he also accepted the position as Staff Photographer at Edgecombe Community College in the Public Information Department.

Sowers has won numerous awards and his work is in permanent and private collections and has had exhibitions of his

work throughout NC.

Sponsors of the exhibit are Beth & Jim Boykin, Framer's Alley; Adele Gray; Sally Hill; Beth & Doug Searcy; Pegi Barnes-Sharp & Rhine Sharp, and Barbara Berry Valentine.

For further information check our NC Institutional Gallery listings or visit (www.wilsonarts.com).

NC Wesleyan College in Rocky Mount, NC, Features Works by Jimmy Craig Womble

NC Wesleyan College in Rocky Mount, NC, will present an exhibit of works by Jimmy Craig Womble, on view in the Mims Gallery, from Mar. 3 through Apr. 2, 2017. A reception will be held on Mar. 17, from 7-8:30pm.

Womble is an authentic contemporary impressionist painter whose main focus is the Eastern Carolina environs and how he memorializes its significant overlooked aspects.

Womble is a plein aire painter and he says he tries to engage the motif daily on location with his paint brush and canvas. Color, loose brush-marks and a keen sensibility for capturing atmosphere with its changing daylight patterns and shadows are his hallmarks of mastery. His subject matter tells a story of other times past and how such times reflect our Eastern Carolina culture of agriculture and commercial fishing.

Trademark icons such as old gas pumps and decaying automobiles interest the artist; they speak of the transitory nature of modern culture made obsolete. Descriptive color opens and closes spaces the artist confronts with his keen eye and painter's brush and palette; there is fog, surprising blasts of sunlight and haunting shady zones of subdued color all locked together in a cohesive unity with knowing draftsmanly brushwork.

Womble's career is marked with nu-



Work by Jimmy Craig Womble

merous solo exhibitions, travel, awards, and a strong sales record gaining him recognition in important permanent collections like the NC Bar Association. We are pleased that this exhibition is Womble's "homecoming", so to speak, since his first solo exhibition was here at the Mims Gallery 2004, since then he has repeatedly soloed at both Adam Cave Gallery and Gallery C in Raleigh, NC, as well as Louisburg College.

Awarded a painting trip to France, there in the birthplace of the Impressionist style, Womble fulfilled his award with a suite of colorful French landmark paintings. Better and better all the time, his popularity continues to grow and his work is collectible.

For further information check our NC Institutional Gallery listings, call the Gallery at 252/985-5268 or e-mail at (eadelman@ncwcc.edu).

Fine Art at Baxters in New Bern, NC, Offers Art From Medical Community

Fine Art at Baxters in New Bern, NC, will present *Creative Healers*, featuring an exhibit and auction showcasing the art of our Medical Community, on view from Mar. 10 - 30, 2017. A silent auction will be held during the exhibition. A live auction will take place on Mar. 30, from 6-8pm.

Proceeds will benefit the new SECU Comprehensive Cancer Center at CarolinaEast Medical center. This center will provide University level care right here in New Bern. In partnership with UNC Health Care, CarolinaEast will serve ALL Eastern North Carolinians with cutting edge prevention programs.

The CarolinaEast Foundation in partnership with Fine Art at Baxters is presenting an exhibit of medical community art including paintings, photography, pottery and sculpture.

The talents and hands of our local medical community are not only providing us with excellent care, but they also are the hands that provide us with wonderful artistic creations. Members of the medical



Work by Karen Crenshaw

community participating in the show will be Nancy Alexander, Gail Bisbee, Drew Grice, Claire Hageman, Julie Larick, John McQuaide, Bettina Meekins, Chris Morgan, Shannon Semple, Jay Singleton, Sammy Tagliari, Kyle Arrowwood, Keitha Covalla and Jim Bisbee (not a physician but reads the "Cleveland Clinic Newsletter").

For further information check our NC Commercial Gallery listings, call the gallery at 252/634-9002 or visit (www.fineartatbaxters.com).

Expo 216 in Wilmington, NC, Features Works by Fritzi Huber

Expo 216 in Wilmington, NC, is presenting *At the Water's Edge*, featuring works by local artist Fritzi Huber, on view through Apr. 23, 2017.

Huber, who maintains a studio at Acme Art Studios, has been hand papermaking for over 35 years. For this exhibition she sought inspiration directly at the edge. A recent series, "The Nets," continued Hu-

ber's enchantment with beached artifacts. "The edge is more than the difference between wet and dry, new and old, trash and treasure. It is a place of transient beauty in all of its forms," Huber says. These works are created using Huber's ideal medium - handmade paper - to express her sentiments.

continued on Page 35

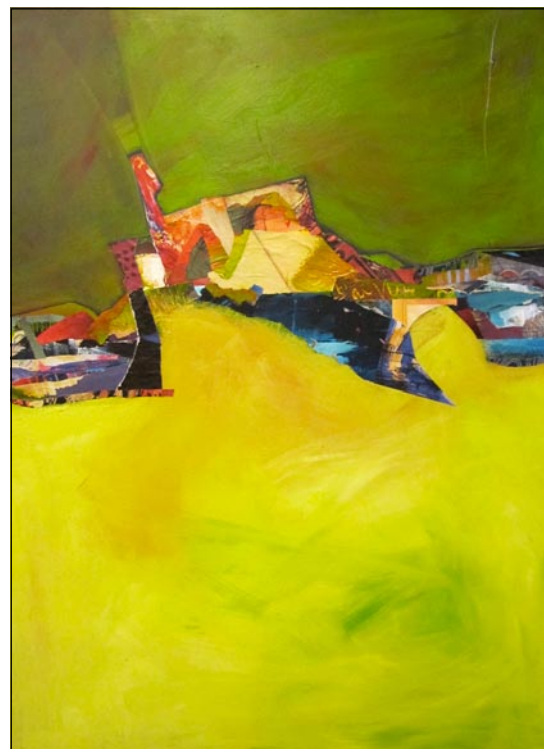
Visit
Carolina Arts
on Facebook

Go to this [link](#) and
"like" us!




Shop online www.carolinacreations.com

CAROLINA CREATIONS | 317 Pollock St
Downtown New Bern, NC
252-633-4369 Open 7 days



Works by Mary Storms

March 1 - April 15, 2017

Reception: March 18th, 1 - 4pm

Sunset River Marketplace

910.575.5999
10283 Beach Drive SW, Calabash, NC
SunsetRiverMarketplace.com

Northern Lights, mixed media

WILMINGTON ART ASSOCIATION

35th Annual

JURIED SPRING SHOW and SALE



April 7-9, 2017

Hannah Block Community Arts Center
120 South Second Street, Wilmington, North Carolina
In Conjunction with the Wilmington Azaela Festival

Open to the public. Visit: wilmingtonart.org for more details.