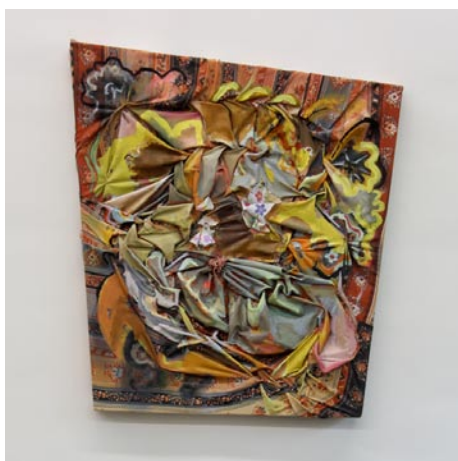


# Sumter County Gallery of Art

continued from Page 18

tion of *The Supper Table* where 13 actors will tell the stories of these important South Carolina women. Many of these women grew up in close proximity to Sumter - Althea Gibson, Julia Peterkin and Mary McLeod Bethune. At the closing reception on Apr. 9, at 5:30pm, there will be a panel discussion with the artists involved (visual, literary, theatre, video artists) in bringing two of *The Supper Table* women to life - Mary McLeod Bethune and Julia Peterkin. This is certain to be a lively discussion with the audience encouraged to participate.

We wish to give special thanks to The Glenmore and May Sharp Charitable Trust, SAFE Federal Credit Union, Covenant Place Continuing Care Community, and Dr. DeAnne and Elielson Messais. Flowers courtesy of Azalea Garden Club & The Council of Garden Clubs of



Work by Maria Britton

Sumter.

For more info check our SC Institutional Gallery listings, call 803/775-0543 or visit ([www.sumtergallery.com](http://www.sumtergallery.com)).

**Carolina Arts is now on Twitter!**  
 Sign up to follow Tom's Tweets, click below!  
[twitter.com/carolinaarts](https://twitter.com/carolinaarts)

art supplies • framing • gallery  
 artist classes • reception hall rental

**CITYART**  
 1224 Lincoln St. Columbia, SC 29201  
 (803) 252-3613 • [www.cityartonline.com](http://www.cityartonline.com)

*Michael Story*  
 ARTIST

Michael Story Fine Art / Workshops  
 803-356-4268  
[www.michaelstory.com](http://www.michaelstory.com)



**NOELLE BRAULT FINE ART**

[WWW.NOELLEBRAULT.COM](http://WWW.NOELLEBRAULT.COM)

SEE MY OTHER WORKS AT:  
 OVER THE MANTLE GALLERY  
 HAVEN'S FRAMEMAKERS & GALLERY  
 (COLUMBIA, SC)

Visit us on Facebook