

NC Institutional Galleries

continued from Page 44

Garden is to evoke a private, mysterious, wild and unkept "garden" started by witches in the American south. Combining the paintings of Trish Klenow from her "Midnight Garden" series and the photographs of Slater Mapp from his "Tarot" series, this gallery space as garden will share the traits of exploration found in Renaissance gardens, and the traits of solace and reflection found in a Cloister garden as well as Klenow's own wild garden in Apex, NC. The viewer will experience the wonder of local flora and fauna in the darkest of North Carolina forests through Klenow's paintings and participate in the wonders of personal systems of belief and spirituality like Tarot, tea reading, Laramonde and the Oracle through the various mediums of Mapp. Photographic illustrations of unseen forces will hang like vines from the walls of the space and move with the wind. Archetypal images like the Empress, the Fool and the Devil will guide the viewers to reflect on their personal journeys. Assemblages, and sculptures will serve as tokens and reminders of the Past. **Cary Arts Center Principal's Hall, Through Mar. 24** - "CARO: Breath of Life". Linda Carolina Nuñez (childhood nickname, CARO) is an American artist currently residing in North Carolina, where she is an accomplished painter and a jewelry designer/maker. She is an Army veteran and a passionate world traveler. She has been teaching and creating art across the country and around the world since 1998. CARO's work and designs are inspired by nature, her travels and emotions. From abstracts to representational; some imaginary and others somewhat realistic in nature. She states that "My goal is to convey beauty and calmness in my work, but it may also strike a chord or pull on the emotional strings of the viewers." **Mar. 27 - May 22** - "Lyudmila Tomova Clark: Fluid Impressions". A reception will be held on Mar. 29, from 6-8pm. Movement and mood are at the core of Lyudmila's artistic style. She merges both abstract and traditional painting in a loose painterly way to create energetic and impactful work. Her themes mainly involve figures and portraits of people captured in their private moments of contemplation, everyday scenes, playing music or dancing. Her painting philosophy is to interpret reality and not copy it. She paints quickly with large gestural strokes free of preconceived logical steps, infusing passion and excitement. A fleeting moment is captured and transformed by means of rules and omissions, acceptance and refusal, luring the viewer round and round in circles. The brush strokes are moving, pushing, emerging and overwhelming, but never still and quiet. **Cary Arts Center Display Cases, Through Mar. 24** - "Souder Studios: Wood Forms". Ralph Souder is a full-time Veterinarian who enjoys turning wood in his spare time. He loves to find unique woods from across the United States and is notorious for finding the local wood guy during his travels and having it shipped, including birch from Alaska. The wooden pieces displayed include pecan, cherry burl, oak burl, maple, and walnut. Souder's work can be found on his Facebook Souder Studios. **Mar. 27 - May 24** - "Michelle Fairholm Pottery". A reception will be held on Mar. 29, from 6-8pm. Featuring wheel-thrown stoneware. Hours: Mon.-Thur., 9am-10pm & Fri.-Sat., 9am-11pm. Contact: 919/469-4069 or at (www.townofcary.org).

Cary Gallery of Artists, 200 S Academy St, Ste 120, Ashworth Square, Cary. Ongoing - The gallery offers high quality art in a variety of styles. Paintings, pencil and colored pencil artwork varies from traditional still lifes and landscapes to abstracts. Portraits of people or animals are available. Photographic work captures magnificent landscapes, small moments in life, portraits, and far away places. The pottery and clay art includes edgy handbuilt pieces, thought-provoking sculpted masks, and decorative and functional pottery that captures images of nature. Our jewelry artists provide a wide range of hand-crafted necklaces, earrings, bracelets and other ornaments from metals, stones, beads and fused glass. Our glass artist creates stained glass hangings, custom stained glass windows and fused glass art. You can also find unusual hand-made books and hand-painted porcelain both antique and new. Hours: Wed.&Thur., 11am-3pm and Fri.&Sat., 11am-5:30pm. Contact: 919/462-2035 or at (www.carygalleryofartists.org).

Herbert Young Community Center, 101 Wilkinson Avenue, Cary. Through May 12 - "Michael Weitzman: Capturing Nature". As a nature photographer, Mike's objective is to share with as many people as possible the beauty that surrounds us. His Herb Young show will feature many stunning landscape and flower images on metal and canvas. Six of Mike's photographs are in the permanent collection at Duke Hospital. Hours: Mon.-Fri., 9am-10pm; and Sat., 9am-6pm. Contact: 919/4604965 or (www.townofcary.org).

Page-Walker Arts & History Center, 119 Ambassador Loop, Cary. Mar.6 -30 - "Dain Kim," featuring works of acrylic on canvas and paper. A reception will be held on Mar. 22, from 6-8pm. After relocating to North Carolina, Kim is getting familiar with a new environment by observing her surroundings. This solo show is a vibrant journal of abundant botanical beings through her lens. Breathe deeply and tune in to the pulsating universe that exists just beyond our habitual awareness. **Mar. 6 - 30** - "Freddie Bell," featuring works of acrylic on canvas. A reception will be held on Mar. 22, from 6-8pm. Through color, abstract shape, layers and patterns, artist Bell reflects on the relationship between grief and the body. **Mar. 6 - 30** - "Eva Green". A reception will be held on Mar. 22, from 6-8pm. Green is a fourth-generation basket weaver. She was skillfully taught the art by her mother, Nadine Degraffenreid. Hand weaving baskets bring her joy, especially intricate designs which provide her with a rewarding challenge. She uses berries, nuts, flowers, vegetables, and other materials to dye the reed for her baskets. Hours: Mon.-Thur., 10am-9:30pm; Fri., 10am-5pm; & Sat., 10am-1pm. (It is strongly advised that you call ahead about hours this space will be open.) Contact: 919/460-4963.

Town Hall Gallery, City of Cary Town Hall, 316 North Academy Street, Cary. Through Apr. 19 - "Magdalena Scholle: Once Upon a Time on Earth". Magdalena Scholle describes this series of paintings "The last two years of the pandemic have been difficult for everyone. Due to epidemiological restrictions, many artists were not able to present their work to the public. During quarantine, she created a series of still life oil paintings entitled "Once Upon a Time on Earth." The focus of these pieces has been to offset stress and fear about the future through a mixture of seriousness and humor. In Spring 2020 there was a run on toilet paper and store shelves ordinarily filled with this essential item ran bare for days. The new difficulties of purchasing this item after the start of the pandemic reminded me of her childhood in communist Poland. During communism schools in Poland, organized an exchange of paper goods: books and waste paper, which students traded in at certain service points for coveted toilet paper. Hours: Mon.-Fri., 8am-5pm. Contact: 919/469-4061.

Chapel Hill - Carrboro

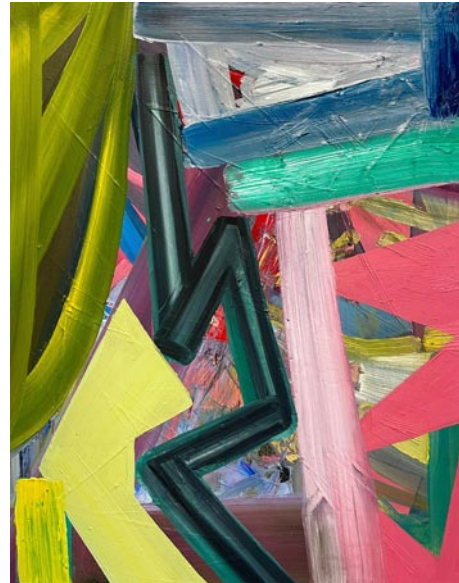
Ackland Art Museum, UNC - Chapel Hill, Columbia & Franklin Streets, Chapel Hill. Through July 21 - "Pantheress," by Georgie Nakima. "Pantheress" is a site-specific installation by Charlotte, NC-based artist Georgie Nakima. Her vibrant and multi-layered painting highlights the complexities of the Black American experience and the indomitable resilience of the Diaspora. Featuring spray paint on cut wood with custom-printed wallpaper, the central focus of this work challenges the conventions of classical portraiture by leaning into the world of the abstract motifs and visual aphorisms that surround her subject. The title of the piece, Pantheress, is a tribute to the instrumental work of the women of the Black Panther movement. The work, featuring timeless geometric and natural forms, can be seen as both a product of this past and a harbinger for a hopeful future. **Permanent Collection Galleries, Through Dec. 31, 2025** - At any one time, there are about 250 works of art from the Ackland's distinguished permanent collection on view. The displays cover many eras and cultures, including most of the Museum's collection areas: the Ancient Mediterranean, Africa, Asia, the Americas, and Europe. Occasional galleries present small selections of prints, drawings, photographs, and other light-sensitive works. You can search our online collection database and filter by works on view. Try saving your own collection of objects using the new "favorites" function! **Museum Store Gallery** (Franklin and Columbia Street), Store hours: Mon.-Sat., 10am-5:30pm & Sun., noon-5pm. Museum Hours: Wed.-Sat., 1-5pm. Contact: 919/966-5736 or at (www.ackland.org).

FRANK, 370 E Main St. Carrboro, Carrboro's East Main Square, next to Hickory Tavern and the Hampton by Hilton hotel, Chapel Hill. Ongoing - Featuring work from over 70 artists, Frank offers more than you'd expect from an art gallery. Frank is a collective, founded by the area's finest artists working together to open the door for creative innovation in the arts. Hours: Tue.-Sat., noon-5pm or by appt. Contact: Contact: 919/636-4135 or at (www.frankisart.com).

The ArtsCenter, 300-G East Main Street, Carrboro. Ongoing - Nurturing the arts in the triangle since 1974 through performance, education and exhibition. Hours: Mon.-Fri., 9am-9pm and Sat. 10am-5pm. Contact: 919/929-2787 or at

(<http://artscenterlive.org>).

ALTERNATE ART SPACES - Chapel Hill Carrboro Town Hall, 301 W. Man Street, Carrboro. Through Apr. 7 - "Portraits of Resilience". A reception will be held on Apr. 6, from 1-3pm. The exhibition celebrates 19 women from diverse backgrounds and experiences. It explores responsive inner strength and perseverance, fragility, and vulnerability when confronted with emotional, physical, or cultural challenges that influenced and changed their lives. Hours: Mon.-Fri., 9am-5pm. Contact: call Barbara Tyroler at 919/360-8791 or e-mail to (bttyroler@mac.com).



Work by Ashlynn Browning

Horace Williams House, 610 E. Rosemary Street, Chapel Hill. Mar. 10 -Apr. 28 - "Forces at Play," featuring works by Ashlynn Browning. A reception will be held on Mar. 10, from 2-4pm. **Ongoing** - The Horace William House is the only historic house open to the public in Chapel Hill. The house retains its original architecture including woodwork, floors, ceilings, and mantles. They have a collection of antique furniture, including a set of four chairs and a newly acquired settee that once belonged to Horace Williams. They offer self-guided tours of the house, including an exhibit about the history of those who lived there. They also have a number of self-guided walking tours of the surrounding community, which you can pick up free of charge at the Horace Williams House. Explore the historic district along East Franklin Street, wander the Old Chapel Hill Cemetery, and more. Hours: Thur. & Fri., noon-4pm and Sun., 2-5pm. Contact: 919/245-4320 or e-mail to (info@visitchapelhill.org).

Charlotte Area

Bechtler Museum of Modern Art, Levine Center for the Arts, 420 South Tryon St., Charlotte. Through June 2 - "Hildur Ásgeirsdóttir Jónsson: Infinite Space, Sublime Horizons". Born and raised in Iceland, Hildur Ásgeirsdóttir Jónsson (b. 1963) has spent the last 30 years developing a unique practice that melds the disciplines of painting, weaving, and drawing, creating an innovative and labor-intensive body of work that blurs the boundaries between abstraction and representation, and fine art and craft. Based on the captivating landscape and skies of Iceland, her work is deeply rooted in environmental subjects and concerns while also contributing to art historical discourses on landscape painting and postwar abstraction. Organized by the Frederick R. Weisman Museum of Art at Pepperdine University, this exhibition will feature large-scale paintings created on a loom and more intimate watercolors and drawings. **Through June 2** - "On the Horizon: Landscapes from the Collection". This exhibition features work by nearly twenty artists from the museum's collection that explore diverse approaches to depicting landscapes. Artists like Isabel Quintanilla, Markus Raetz, and Italo Valenti portray idyllic scenes; in contrast, Paul Harcharik explores the grim impact of industrialization. Other artists including Nicolas de Staël, Maria Helena Vieira da Silva, and Zao Wou-Ki push the boundaries of traditional landscapes with wholly abstract compositions. With works spanning over fifty years, "On the Horizon: Landscapes from the Collection" delves into artists' varied engagements with the natural world and evolving environments. **Through Aug. 9** - "Eduardo Chillida: 100 Years". This exhibition commemorates the centenary of the influential Spanish sculptor Eduardo Chillida (1924-2002). Presenting a selection of sculptures and works on paper from the Bechtler Museum's permanent collection, this intimate exhibition offers a focused look at the artist's pioneering and varied practice. Renowned for his monumental sculptures, Chillida also created domestically-scaled sculptures, drawings, collages, and prints, examples of which will be on view. Together these works illustrate the great influence that Chillida's upbringing in the Basque region of Spain and his early training in architecture had on his unique artistic vision, and demonstrate his enduring exploration of space, light, form, and material. **Through Aug.**

9 - "Alyson Sholtz: Coalescence". Blurring the boundaries between art and science, American artist Alyson Sholtz (born 1964) is widely acclaimed for her sculptures and installations that use synthetic materials such as glass, mirrors, plastic, and stainless steel to harness intangible forces of the natural world like gravity, space, and light. On loan from the Bank of America Collection, this single-work installation is a dazzling sculpture made of glass beads and wire that hangs from the ceiling, "Coalescence" (2006) resembles a hovering cloud, a massive spider web glistening with morning dew, or a cluster of atoms magnified to monumental scale. Its open form challenges traditional notions of sculpture as grounded, solid, or weighty, and reveals Sholtz's abiding interest in perception: calling attention to the relationship between an artwork, the viewer, and the space they share. **Ongoing** - The Bechtler Museum of Modern Art is named after the family of Andreas Bechtler, a Charlotte resident and native of Switzerland who assembled and inherited a collection of more than 1,400 artworks created by major figures of 20th-century modernism and donated it to the public trust. The Bechtler collection comprises artworks by seminal figures such as Alberto Giacometti, Joan Miro, Jean Tinguely, Max Ernst, Andy Warhol, Alexander Calder, Le Corbusier, Sol LeWitt, Edgar Degas, Nicolas de Stael, Barbara Hepworth and Picasso. Only a handful of the artworks in the Bechtler collection have been on public view in the United States. Admission: Yes. Hours: Mon., Wed.-Sat., 10am-5pm; Sun. noon-5pm; and open until 9pm the 1st. and 3rd. Fri. of each month. Contact: 704/353-9200 or at (www.bechtler.org).

Bill and Patty Gorelick Gallery, at Central Piedmont Community College's Cato Campus, Cato III, 8120 Grier Road, Charlotte. Through May 7 - "Archival Photos Reimagined," featuring works by Central Piedmont Students and Staff. In a joint effort between the Central Piedmont Archives and Art Galleries, students and staff came together to recreate photographs from the Central Piedmont Archives. Using the photographs as inspiration, each participant artistically reimagined a selected photograph using any media of their choice. The Gorelick Galleries will exhibit this collection of works on Cato, Levine and Central Campuses as part of a traveling exhibition series. With an emphasis on College history and student engagement the exhibition celebrates the some of the best moments in the College's history and in turn shines the spotlight back on students. Hours: open while campus is open, but reservations help us alert our security team to visitors, provide directions to the galleries, and COVID-19 security protocol instructions to the visitors. Contact: 704/330-6869 or e-mail to (foundation@cpcc.edu) to schedule an appointment. For directions to Central Piedmont's campuses, visit (cpcc.edu/locations).

Bill and Patty Gorelick Gallery, at Central Piedmont Community College's Central Campus, North Classroom, 1320 Sam Ryburn Walk, Charlotte. Through May 7 - "Fragments," featuring works by Tina Alberni. Alberni derives this series of work from impact of climate change and the harm created by aspects of technological development and progress. With a deep belief that all living things possess and intrinsic value and not simply human beings, Alberni challenges the viewer to consider topics such as how natural disasters, war and social disparity contribute to the endangerment and physical displacement of all living things. Alberni uses her new exhibition "Fragments" to illustrate the narrative of fragmented lives and irreversible damage both visually and physically. In contrast to the hopeless narrative of destruction, Alberni seeks to use her artwork to create a positive, hopeful spirit for the future. Alberni assembles objects and layers in her work in a brightly colored, harmonious fashion, which invites the viewer in for a deeper contemplation of each composition. Alberni's work will be on display at Central Piedmont for 2024 and will be part of the Gorelick Gallery's traveling artwork series. Hours: open while campus is open, but reservations help us alert our security team to visitors, provide directions to the galleries, and COVID-19 security protocol instructions to the visitors. Contact: 704/330-6869 or e-mail to (foundation@cpcc.edu) to schedule an appointment. For directions to Central Piedmont's campuses, visit (cpcc.edu/locations).

Bill and Patty Gorelick Gallery, at Central Piedmont Community College's Harper Campus, Harper IV, 315 W. Hebron St., Charlotte. Through Dec. 31 - "A Journey Through Life", featuring works by Jodi Lynn McNeely. This series has been several years in the making. As you inspect each piece of work, look for the 'path'. It represents our journey. We all are on our own journey, have our own story. As I talk to folks about their stories, I'm amazed at how similar our experiences can be. Our life events, whether the same or different can cultivate

continued on Page 46