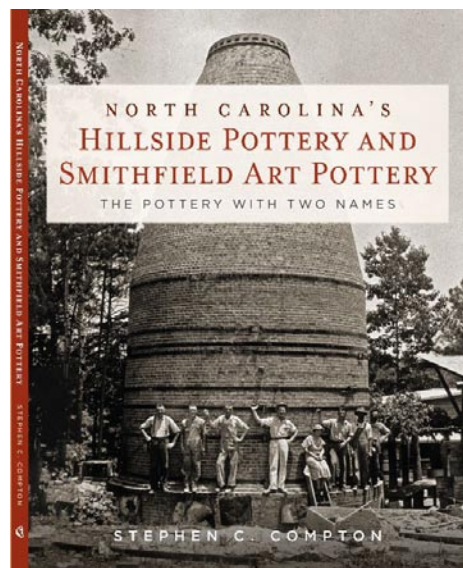


# NC Institutional Galleries

continued from Page 51

Josh Goering (KS), Jared Zehmer (NC), and Delores Farmer (NC). For further info visit ([www.ncpottersconference.org](http://www.ncpottersconference.org)) to learn more and register.



The book this exhibition was based on.

**North Carolina Pottery Center**, 233 East Avenue, Seagrove. **Through June 15** - "Hillside & Smithfield: A Tale of Two Potteries." Supported by Anna Graham, of New York and Pinebluff, N.C., Herman Cole opened Hillside Pottery in 1927, in Smithfield, NC. Cole, the son of potter J.B. Cole, produced the pottery; Graham, a trained artist, sketched artware shapes to be duplicated. Sales were made at the shop's roadside stand and numerous northern outlets identified by Graham. Hillside Pottery became Smithfield Art Pottery in about 1930. With talented turners like Jonah Owen, Charlie Craven, Charlie Teague, Guy Daugherty, Bill Gordy, and others, Herman Cole turned fledgling Hillside Pottery into Smithfield Art Pottery, a pottery-making behemoth with thousands of finished wares shipped out weekly. For more than a decade, in the wake of the Great Depression, superbly turned shapes, and superior glazes ensured strong sales and acclaim for the pottery's products. **Ongoing** - Featuring permanent and changing exhibits on the history of North Carolina pottery, "The North Carolina Pottery Tradition" and "Seagrove Area Pottery". The Center also offers information on activities, maps and information about the potteries located in the Seagrove area and across the state. A display of representative works from more than 90 area potteries is also offered. Hours: Tue.-Sat., 10am-4pm. Contact 336/873-8430 or at ([www.ncpotterycenter.org](http://www.ncpotterycenter.org)).

**Seagrove Area Pottery Center (Not the NC Pottery Center)**, 122 E. Main St., Seagrove. **Ongoing** - The former museum organization was founded twenty-five years ago in Seagrove, and is dedicated to preserving and perpetuating the pottery tradition. We strive to impart to new generations the history of traditional pottery and an appreciation for its simple and elegant beauty. A display of area pottery is now offered in the old Seagrove grocery building. Hours: Mon.-Sat., 9:30am-3:30pm. Contact: 336/873-7887.

**STARworks Center for Creative Enterprise**, 100 Russell Drive, just seven miles south of Seagrove in Star. STARworks is a project of Central Park NC, a 501-(c)(3) not for profit organization based in rural central North Carolina. The mission of CPNC is to grow a new rural economy based on the sustainable use of the natural and cultural resources of the region. **STARworks Businesses: STARworks Glass** is a public access glass studio that offers rental space for glass artists, classes and workshops for the general public, a resident artist and internship program, and high school and college glass curriculum. In addition to fundraisers like our Pumpkin Patch and Holiday Ornament Sale, STARworks Glass also holds free demonstrations on the second Thursday of each month at Hot Glass Cold Beer. **STARworks Ceramics** uses native NC wild clays to produce clay bodies that are manufactured with a filter press on site. We also sell pottery supplies and equipment. In addition to our STARworks clays, we offer both Highwater and Standard clays, and tools and equipment from Shippo, Cone Art Kilns, Mudtools, AMACO, Kemper Tools and Orton. **STARworks Clay Studio** offers a residency program for ceramic artists. Our facilities allow for large workshop spaces placed side by side, supporting a collaborative and energetic educational environment. In addition to the residency program, STARworks Clay studio offers classes and workshops for adults. STARworks is also home to **Wet Dog Glass**, the most trusted and dependable equipment maker and consultant for glass artists and craftspeople worldwide. **School House Gal-**

**lery, Through Mar. 23** - "Accumulation," featuring ceramic works by Eamon Rogers. **Ongoing** - The gallery is filled with a selection of works from artists and artisans alike, bringing hand crafted wares into a new light. From one of a kind tableware crafted from locally mined clay paired with handwoven placemats, to simple yet elegant glass goods designed with our utilitarian ideals in mind, our functional collections are a must have for any home. Our gallery also features a selection of sculptures that gray the lines between want and need. Whether your desire is to capture an experience with one of our artists or our team, decorate your home with memories of your travels, or to treat yourself and others to a unique handmade gift, we have something for everyone to make your time here unforgettable. Gallery Hours: Mon.-Sat., 9am-5pm. **STARworks Café & Taproom** - Featuring Espresso, Iced & Frozen Coffee, Coffee, Tea, Cocoa, Smoothies, Beer & Wine, Soda, Bottled Water, Snapple, Snacks, and Pastries. And, live music some nights - visit (<https://www.starworksnsc.org/caf-taproom>) for the schedule. Hours: Mon., 9am-3pm & Tue.-Sat., 9am-9pm. STARworks General Hours: Mon.-Sat., 9am-5pm. Contact: Claire Sellers, Starworks Communications Coordinator by e-mail at ([claire@starworksnsc.org](mailto:claire@starworksnsc.org)).

## Siler City

**North Carolina Arts Incubator Gallery**, 223 N Chatham Ave., Siler City. **Ongoing** - Featuring the handcrafted work of over 30 Incubator and regional artists in a variety of mediums including painting, pottery, stained and fused glass, fabric art, cards, photography, wood, jewelry, metal, baskets and more. There is a broad range of items and prices. Hours: Mon.-Sat., 10am-5pm; & 3rd Fri., 10am-9pm. Contact: 919/663-2072 or at ([www.ncartsincubator.org](http://www.ncartsincubator.org)).

**PAF Gallery**, 223 N Chatham Ave., Siler City. **Ongoing** - A gallery featuring works by local and regional artists. Hours: 3rd Fri. 6-9pm. Contact: 919/663-2072 or at ([www.ncartsincubator.org](http://www.ncartsincubator.org)).

## Southport

**Franklin Square Gallery**, 130 E. West St., Southport. **Through Mar. 16** - "Associated Artists of Southport's Spring Art Show 2024". A reception and awards ceremony will be held on Mar. 1, from 5-7pm. **Ongoing** - Works by members of the Associated Artists of Southport. Hours: Mon.-Sat., 10am-5pm. Contact: 910/457-5450 or at ([www.franklinsquaregallery.com](http://www.franklinsquaregallery.com)).

## Spruce Pine

**TRAC Arts Center**, Toe River Arts Council, 269 Oak Avenue, Spruce Pine. **Ongoing** - Toe River Arts will feature artist demonstrations and continue to sell artist's work in the gift shop. Hours: Tue.-Sat., 10:30am-5pm. Contact: 828/682-7215 or at ([www.toeriverarts.org](http://www.toeriverarts.org)).

## Sylva

**Gallery One**, Home of the Jackson County Visual Arts Association, 604 West Main Street, Sylva. **Ongoing** - The gallery is home to over 20 artists local to the area. Gallery 1 is a not for profit gallery operated as a club to provide a space for professional and emerging artists to share their artistic endeavors, display works sold to help support their vocation. Hours: Thur.-Fri., 11am-3pm and Sat., noon-4pm. Contact: Tim Lewis 828/337-3468 or James Smythe 828/507-4248.

## Tryon

**Tryon Arts and Crafts School**, 373 Harmon Field Rd., in the old Tryon Middle School, Tryon. **Mar. 1 - Apr. 13** - "REIMAGINED REALITIES: UP/REcycled Art," featuring TACS's annual members' exhibition & prize competition. A reception will be held on Mar. 1, from 6-8pm. TACS' annual member exhibition returns with a new theme celebrating the transformative power of recycling and upcycling. Breathe new life into discarded materials. From your leftover or discarded studio materials to repurposed found objects, showcase your ingenuity. **Gift Shop, Ongoing** - Gift Shop features juried works by regional artisans to selected work produced by our instructors and students. Hours: Mon.-Fri., 9am-5pm & Sat. 9am -1pm. Contact: 828/859-8323 or at ([www.tryonartsandcrafts.org](http://www.tryonartsandcrafts.org)).

**Upstairs Artspace**, (Celebrating over 40 Years) 49 South Trade Street, Tryon. **Through Mar. 15** - "Strangers," featuring works by Kevin Isgett; "Off The Wall," featuring works by Suzanne Dittenber and Mark Flowers. Hours: Tue.-Sat., noon-5pm.

Contact: 828-859-2828 or at ([www.upstairsartspace.org](http://www.upstairsartspace.org)).

## Valdese

**Valdese Heritage Arts Center**, 146 Main Street West, Valdese. **Ongoing** - The center offers a great selection of unique gifts on exhibit and for sale, including, but not limited to original paintings, pottery, needlework, wood-carvings, hand crafted furniture, ceramic sculptures, stained glass, photography, jewelry, floral arrangements greeting cards, quilts and home made soap. Hours: Mon.-Fri., 9am-5pm & Sat., 11am-3pm. Contact: 828/874-1849 or at (<http://vhac.webs.com>).

## Washington

**River Walk Gallery and Arts Center**, 139 W. Main Street, Washington. **Ongoing** - All work is done by local artists and has to be juried into the gallery. The gallery includes watercolor, oil, and acrylic paintings, photography, pottery, mixed media, fiber arts, jewelry, wood work, stained glass, and books written by local authors. Hours: Mon.-Sat., 10:30am-5pm. Contact: 252/974-0400.

## Waynesville

**Little Gallery on Church Street**, 37 Church Street, Waynesville. **Ongoing** - Featuring monthly exhibits by regional arts. Sponsored by the Haywood County Arts Council. Hours: Mon.-Fri., 9am-5pm. Contact: 828/452-0593 or at ([www.haywoodarts.org](http://www.haywoodarts.org)).

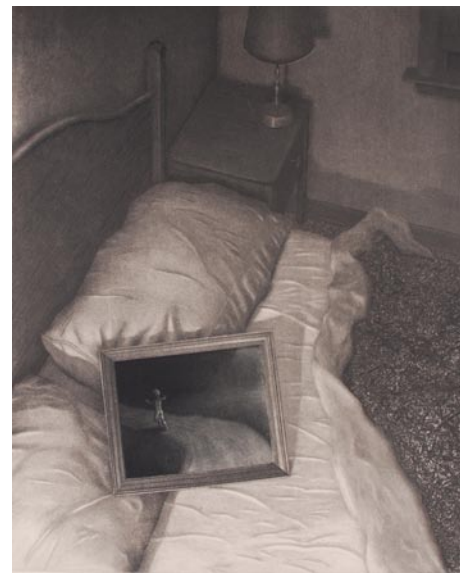
**The Museum of North Carolina Handicrafts**, 307 Shelton Street, corner of US 276 So. and Shelton Street, Waynesville. **Ongoing** - Featuring the handicrafts of North Carolina in the historic Sheldon House. Hours: Museum hours change seasonally, call 828/452-1551.

## Wentworth

**Dan River Art Market & Gallery**, 1122 NC Hwy. 65, Wentworth. **Ongoing** - The gallery offers art and craft by local artists and 6 gallery exhibits throughout the year, workshops and lectures. Hours: Thur., 10am-4pm; Fri., 11am-2pm; and by appt. Contact: 336/349-4039.

## Wilmington

**ACES Gallery**, Arts Council of Wilmington and New Hanover County, 221 N Front Street, Suite 101, Wilmington. **Through Mar. 19** - "New Paintings: Tara Weymouth". Hours: Mon.-Fri., 10am-5pm. Contact: 910/343-0998 or at ([www.ArtsCouncilofWilmington.org](http://www.ArtsCouncilofWilmington.org)).



Donald Furst, "The Go-Between", 1993 Soft-Ground Etching and Mezzotint

**Cultural Arts Building**, ground floor, corner of Randall Parkway and Reynolds Drive, UNC-Wilmington, Wilmington. **CAB Art Gallery, Through Mar. 28** - "Fifty Years of Printmaking: Donald Furst 1974-2024". Donald Furst's "Fifty Years of Printmaking" exhibition begins with drypoint prints from 1974 and finishes with work completed in 2024. Printmaking media include drypoint, engraving, etching, linoleum cut, lithography, metal relief, mezzotint, monotype, screen printing, Solarplate intaglio, vitreography (glass plate printmaking), and woodcut. Hours: Mon.-Fri., noon-4pm. Contact: call art dept. at 910/962-3440 or at ([www.uncw.edu/art/gallery](http://www.uncw.edu/art/gallery)).

**Hannah Block Historic USO/Community Arts Center**, 120 South Second Street, Wilmington. **Mar. 30 - Apr. 7** - "42nd Annual Juried Spring Show & Sale," the official art show of the Azalea Festival. presented by the Wilmington Art Association. A reception will be held on Mar. 29, from 6-9pm. Hours: Mar. 30 - Apr. 6, 10am-5pm & Apr. 7, from 10am-4pm. Contact: call 864/884-1025 or visit ([www.wilmingtongallery.org](http://www.wilmingtongallery.org)).

**Louise Wells Cameron Art Museum**, @ intersection of Independence Blvd. & South 17th Street, Wilmington. **Through Mar. 3** - "3 Artists: Work of Elizabeth Darrow, Gayle Tustin, and



Charles Edward Williams (American, b. 1984) "One Day You Will Fly," 2023, Crayon, acrylic, and oil on gesso watercolor paper. On Loan from the Artist

Karen Paden Crouch". A reception, film screening and panel discussion to benefit CAM's Educational Programming on Jan. 28, at 3pm. Tickets are \$40 for CAM Member/\$60 for Not-Yet Members and all proceeds benefit CAM's educational programming. These three short films, produced by Art in Bloom Gallery, directed by Christina Capra and edited by Jessie Robertson focus on three dynamic Wilmington artists: Elizabeth Darrow, Gayle Tustin and Karen Paden Crouch. Painter and collage maker Elizabeth Darrow's work is the subject of the film "Believing in the Process", ceramist and mixed media artist Gayle Tustin's work is the subject of the film "Seeking Freedom Through Art", and sculptor Karen Paden Crouch's work is the subject of the film "Land of Make Believe: An Artist's Journey". In conjunction with this event CAM highlights works of these artists in a temporary exhibition titled "Three Artists: Works of Elizabeth Darrow, Gayle Tustin, and Karen Paden Crouch". **Through Mar. 31** - "Monument," a new exhibition featuring work by nationally and internationally renowned artists Sonya Clark, Willie Cole, Stephen Hayes, Juan Logan, Alison Saar, Augustus Saint-Gaudens, and Kara Walker. The exhibition, received funding from the National Endowment for the Arts. "Monument" takes inspiration from Boundless", the public sculpture on Cameron Art Museum's grounds by Stephen Hayes honoring the United States Colored Troops (USCT) and their fight for freedom. Through their work, artists Sonya Clark, Willie Cole, Stephen Hayes, Juan Logan, Alison Saar, Augustus Saint-Gaudens, Kara Walker, and others create a dialogue acknowledging, questioning, and confronting the idea of commemoration in the built environment in the United States. Exhibition includes loans from Nasher Museum of Art at Duke University, Saint-Gaudens National Historical Park and the collection of the Cameron Art Museum.

**Through May 26** - "Charles Edward Williams: Stay in the Light," featuring works inspired by the Civil Rights Movement. The Cameron Art Museum is proud to present Stay in the Light from South Carolina artist Charles Edward Williams. This exhibition draws inspiration from historical photography of the Civil Rights movement, offering a contemporary response to social and political issues of the past and present. Charles Edward Williams' paintings and installation works incorporate a strong use of color and gesture, inviting a focus on human emotion and our connectedness and commonality. Stay in the Light includes new work created for this exhibition, as well as work from Williams' Sun and Light series. Born in Georgetown, SC, Williams currently lives in Durham, NC. A graduate of Savannah College of Art and Design, Charles Edward Williams is a supported recipient of the Andy Warhol Visual Arts Grant. He teaches at North Carolina Central University where he is the SunTrust Endowed Faculty Chair and Associate Professor of Drawing and Painting, a position formerly held by Beverly McIver. **Through Oct. 20** - "The Work of Their Hands". The anchor work of "The Work of Their Hands" is a tulip quilt made 170 years ago by an now unknown, enslaved woman in North Carolina. Through her masterful stitchwork and time-honored design, this unknown artist sewed a story of strength and perseverance. Spinning forward from this quilt and its practice, The "Work of Their Hands" explores the continuing legacy of quilt-making and the evolution of textile art, starting with traditional quilts made for bedcoverings to contemporary fabric artworks by artists like Celeste Butler, Michael Cummings, Gee's Bend quilters, Michael James, Beverly Smith and others. **Ongoing** - Cameron Art Museum presents the only sculpture park in the country created to honor the United States Colored Troops and their fight

continued on Page 53