

# WELLS GALLERY

"NOSTALGIA" OPENING FRIDAY APRIL 1<sup>ST</sup> 5-8. P.M.



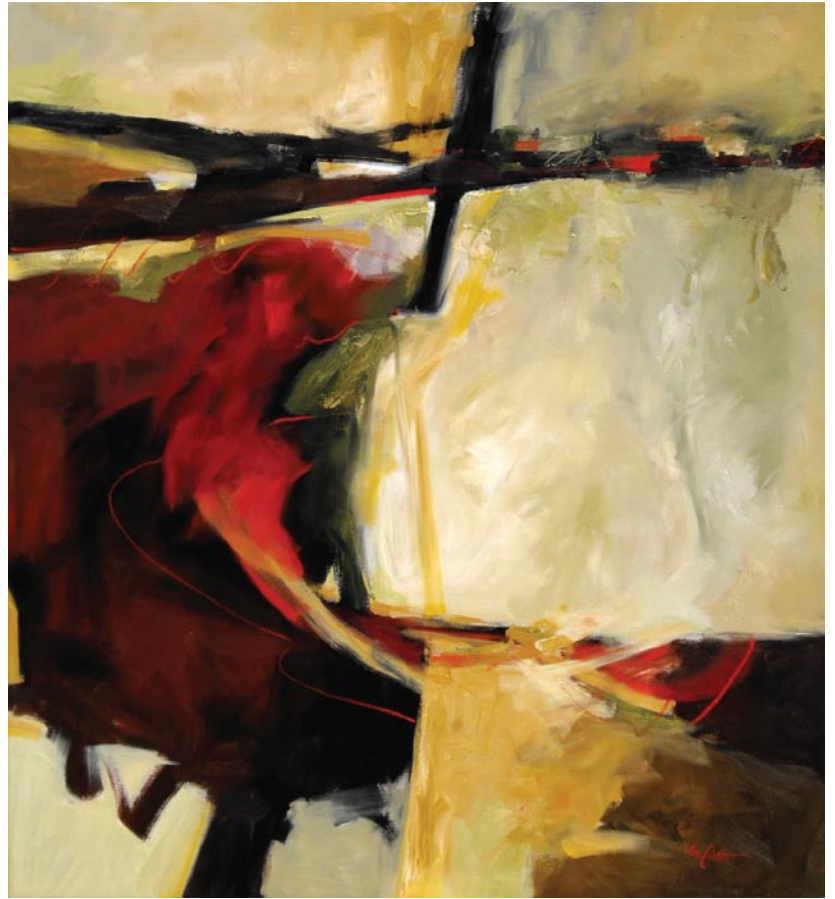
"EMERGING" 48 x 36 BY SALLY THARP

VISIT OUR TWO LOCATIONS

125 MEETING STREET CHARLESTON, SC 29401 (843) 853.3233

ONE SANCTUARY BEACH DR. KIAWAH ISLAND, SC 29455 (843) 576.1290  
(IN THE SANCTUARY HOTEL)

WWW.WELLSGALLERY.COM



**Intention**  
Oil on Canvas, 72 x 66 inches

## Eva Carter

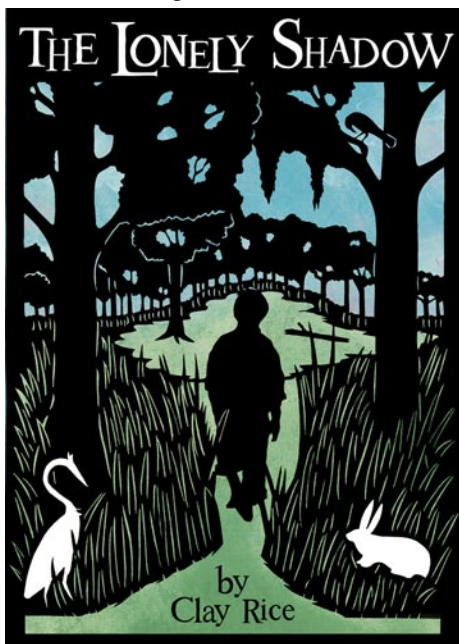
Plan a visit to the new Downtown Studio for a private showing of latest works.

**New Downtown Studio**  
6 Gillon Street, Suite 8 (second floor)  
Charleston, SC 29401  
Just north of the Old Exchange Building

**By Appointment Only**  
Please call (843) 478-2522  
[www.EvaCarterGallery.com](http://www.EvaCarterGallery.com)

## City of North Charleston Gallery Features Works by Clay Rice

The City of North Charleston's Cultural Arts Department is pleased to announce that works by Clay Rice will be on exhibit at the North Charleston City Gallery in North Charleston, SC, from Apr. 1 - 29, 2011. The exhibition is on loan from the South Carolina State Museum's Traveling Exhibitions Program.



*The Lonely Shadow: Silhouette Art by Clay Rice, features original illustrations from The Lonely Shadow, a new children's book created by the nationally known*

silhouette artist. This exhibit blends the elegant black and white silhouette tradition with a colorful world in the story of friendship between a lonely shadow and a little boy.

Silhouetting has been in Rice's family for decades and he has continued to honor that tradition. He learned how to construct silhouettes from his grandfather, Carew Rice, who cut many of the iconic silhouettes seen throughout Charleston. Rice describes his process as a combination of style he has developed and techniques that have been in his family for all these years. "I fumble through it until I get it right and hopefully learn from the last thing I do," he explains.

Rice's silhouettes have been featured in *Country Living*, *The Washington Times*, *The Atlanta Constitution*, and *Cookie Magazine*. He is also the recipient of the Moonbeam Children's Book Award and the IPPY Award for Children's Book of the Year.

The North Charleston City Gallery is located in the Charleston Area Convention Center with free parking and admission during regular Convention Center operating hours.

For further information check our SC Institutional Gallery listings, call the North Charleston Cultural Arts Department at 843/740-5854 or visit ([www.northcharleston.org](http://www.northcharleston.org)).

studio, Costanza orchestrates paintings that engage the viewer to enter the subject with him by capturing the light and atmosphere.

Over twenty-five years of Costanza's life were in Law Enforcement in such specialties as SWAT, K9 Handler, K9 Supervisor, Patrol Supervisor and Detective. About mid career, the desire to return to artistic endeavors surfaced after having been abandoned in his early twenties.

Though dormant, there was a constant underlying desire to again delve into the mysteries of paint, light, and subject matter. Costanza believes it took a decade and a half of discipline to mold his personal tendencies to study and work as hard as one needs to in the very difficult endeavor of making a good painting. Costanza retired from law enforcement to become a full-time painter.

Primarily "self-taught", he has studied with a number of great contemporary art-

ist/teachers including Kevin McPherson, Matt Smith, Jeffery Watt, and has a long standing close personal as well as professional friendship with Scott L. Christensen. It is Christensen whom Costanza credits with most of his growth. Frequently these two can be found painting, fishing, hunting or just enjoying the fellowship of intimate friendship.

Costanza's work is in collections from coast to coast and is included in the permanent collection of the Academy Museum in Easton, MD. He currently lives in Eugene, OR, with his wife and two sons.

"I am always humbled when someone trades the fruits of their hard labors for the outcome of mine," says Costanza.

A portion of sales from the show will benefit the Wounded Warrior Project.

For further information check our SC Commercial Gallery listing, 843/727-4500 or visit ([www.mgalleryoffineart.com](http://www.mgalleryoffineart.com)).

## Gibbes Museum of Art in Charleston, SC, Offers Two Exhibits for Sesquicentennial Commemoration of the Start of Civil War

The Gibbes Museum of Art in Charleston, SC, will present two new exhibitions from Apr. 8 through July 10, 2011, to coincide with the 150th anniversary observance of the start of the Civil War. *Stephen Marc: Passage on the Underground Railroad*, (Main Gallery) organized by the University at Buffalo Art Galleries, Buffalo, New York, features Marc's fascinating photographs and digital montages that explore the history of freedom-seekers on the Underground Railroad. *A Soldier's View of Civil War Charleston*, (Rotunda Galleries) organized by the Gibbes, features paintings by artist and Confederate soldier Conrad Wise Chapman depicting Charleston during the war.

"The Civil War is certainly an important part of Charleston's history, and our featured exhibitions offer two different

perspectives of this time period. Conrad Wise Chapman's paintings provide the first-hand view of a soldier on the front lines, while Stephen Marc's digital montages offer a contemporary take on slavery, the Underground Railroad, and the vestiges of the Civil War," stated Pam Wall, Gibbes Curator of Exhibitions.

Photographer and digital montage artist Stephen Marc, winner of the Gibbes Museum 2009 Factor Prize for Southern Art, explores the history of North America's freedom seekers in the exhibition *Stephen Marc: Passage on the Underground Railroad*. Since 2000, Marc has taken thousands of photographs of more than 100 historic sites in over thirty states and in Canada. With this body of work, Marc combines contemporary images with

*continued on Page 9*

## M Gallery of Fine Art in Charleston, SC, Features Works by Gene Costanza

M Gallery of Fine Art in Charleston, SC, will present the exhibit, *An American Collection: Works by Gene Costanza from West to East*, on view from Apr. 1 - 30, 2011. A reception will be held on Apr. 1, from 5-8pm.

Costanza is a contemporary realist painter of traditional subject matter, focusing primarily on landscape and man's interaction with it. Equally at home painting "en plein air" as well as the

*continued above on next column to the right*