



Neher

Commissioned Portrait Paintings  
by Brian Neher

(704) 543-8815

www.BrianNeher.com



## ENO Gallery in Hillsborough, NC, Offers Works by Michael Brown

ENO Gallery in Hillsborough, NC, is presenting *Up Close and Far Away*, featuring works by Michael Brown, on view through Apr. 21, 2013.

Up close and far away are two, or perhaps more accurately, a spectrum of modes in which we can look at things. We choose which mode to look at something based on its distance from us, on the level of detail we need...

Working directly from nature, Brown captures both the up close abstractions of a landscape and the far away vistas of a distant view. His 'broken color' brush technique lends his paintings a sense of spontaneity. Yet, this seemingly loose brushwork reveals a carefully constructed composition that invites the viewer to share the artists' experience...

Brown states, "It's no surprise that painters still turn to the natural world to explore their visual understanding and express their artistry. There is no richer interplay of shape and color than that found in nature."

From the viewers perspective there is another meaning behind the title *Up Close*



Work by Michael Brown

*and Far Away*. Helen Stancey, a psychologist from West London College states "Evidence exists that separate pathways in the brain process visual information from near and far space." Viewing one of Browns paintings 'up close' they appear as bold abstractions but as the viewer gains some distance the landscape image is revealed.

For further information check our NC Commercial Gallery listings, call the gallery at 919/833-1415 or visit (<http://www.enogallery.net/>).



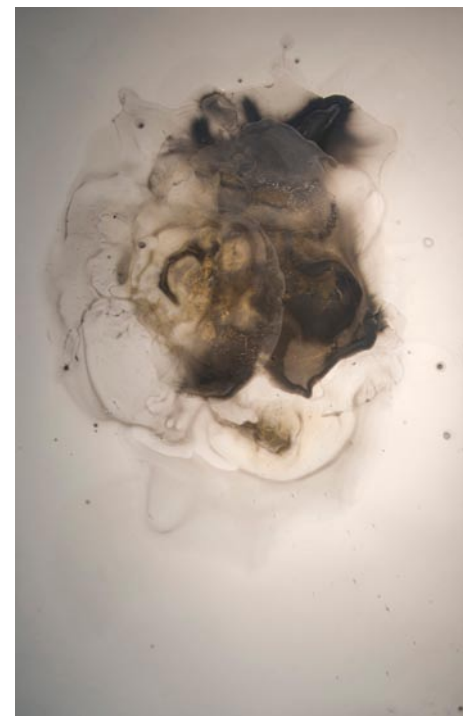
Work by Ira Upin

linois in Medical Illustration, but it didn't sufficiently capture his imagination. He turned to fine art and has not looked back since. When he was not painting, Upin designed and renovated abandoned buildings in his neighborhood in Philadelphia. After exploring various subject matter and processes, this current body of work brings Upin back to the realistic imagery and oil paint that he used when he first came into his own as a visual artist.

Nancy VanNoppen's recent works further her use of an experimental process that involves staining smooth surfaces with layers of water-based solutions containing mixed media. The effects produced by this technique create illusions of depth or volume that aim to evoke a sense of ethereal presence.

VanNoppen was raised in Morganton, NC, and graduated from Hollins University in Roanoke, VA, with a BA in Studio Art in May 2012. Her work was recently exhibited in Roanoke at a solo show at Liminal Alternative Artspace, as well as in group exhibitions at Exchange 81 at Liminal, the *Senior Majors Exhibition* at the Eleanor D. Wilson Museum, and *Explorations of a Space Age* at the Unicorn

Stables Project. VanNoppen was the 2011 recipient of the Frances Niederer Scholar Award in studio art at Hollins and was Artspace's Regional Emerging Artist-in-Residence from July 2012 – January 2013.



Work by Nancy VanNoppen

Artspace is a nonprofit visual art center dedicated to providing arts education and community outreach programs, creating an environment of more than 100 professional artists and presenting nationally acclaimed exhibitions. Located in downtown Raleigh in the historic Sanders Ford building, Artspace has been providing the community with the opportunity to interact with working artists and to participate in hands-on arts education since 1986.

For further information check our NC Institutional Gallery listings, call Artspace 919/821-2787 or visit ([www.artspacenc.org](http://www.artspacenc.org)).

## Artspace in Raleigh, NC, Offers Several New Exhibits

Artspace in Raleigh, NC, will be presenting several new exhibits including: *Works in Cloth*, featuring works by Alice Engel Levinson, on view in the Upfront Gallery, from Apr. 5 - 27, 2013; *Strong Man*, featuring works by Ira Upin, on view in Gallery 2, from Apr. 5 - May 25, 2013; and *In Essence*, featuring works by Nancy VanNoppen, on view in the Lobby Gallery, from Apr. 7-27, 2013, who will give a lecture on Apr. 18, from 6-7:30pm. A reception will be held for all these exhibits on Apr. 5, from 6-10pm and a second reception will be held for Ira Upin on May 3, from 6-10pm.

Alice Engel Levinson is a primarily self-taught artist who, after 25 years as a clinical psychologist, left her career to pursue work with textiles. In her cloth constructions, natural forms and patterns are prominent motifs. Levinson explores feelings, memories, and myths, with inspiration including biblical text and Modern Hebrew poetry. She uses a broad range of processes to emphasize layering of color and texture.

The works in the Upfront Gallery are wall-hung, sewn cloth constructions that have been hand-dyed, silk-screened, and/or painted. Her designs introduce movement and the intuitive process. Her work has been exhibited in exhibitions throughout the United States and in Israel, including at the Beth El Synagogue in Durham, NC, The Durham Arts Council, and the American Guild of Judaic Artists.

Ira Upin's *Strong Man* series consists of a series of oil on self-portraits done in a compelling narrative realist style. The artist puts himself in imagined situations



Work by Alice Engel Levinson

that are at once fanciful and provocative, including a cigar-smoking kingpin in *Fat Cat* (2010) and a weight lifter in a surreal, hybrid stage set in *Impossible Burden* (2009). In addition to self portraits, Upin includes portraits of his wife and granddaughters in these explorations of vulnerability, the insecurity that often accompanies aging, strength, and family dynamics.

Upin was born in Chicago, IL, and has lived in Philadelphia, PA, since earning his MFA from the Maryland Institute College of Art in Baltimore, MD. He began his artistic training at the University of Il-

*continued above on next column to the right*

The deadline each month to submit articles, photos and ads is the 24th of the month prior to the next issue. This will be Apr. 24th for the May 2013 issue and May 24 for the June 2013 issue. After that, it's too late unless your exhibit runs into the next month. But don't wait for the last minute - send your info now.  
And where do you send that info?  
E-mail to ([info@carolinaarts.com](mailto:info@carolinaarts.com)).



Carolina Clay Resource Directory is our attempt at *Carolina Arts* newspaper to create a focal point for info about the clay community in both North and South Carolina. We may not be everything some want, but we'll try and bring our readers the most news about what's going on, where you can find it, and info about the individuals and organizations involved in the Carolina community. Whether you call it clay, pottery, ceramics - if you don't see what should be here - just let us know about it so we can add it to the mix.

For the Carolina Clay Resource Directory go to:

[www.carolinaarts.com/ccrd/carolinaclay.html](http://www.carolinaarts.com/ccrd/carolinaclay.html)

For the Carolina Clay Resource Directory Blog go to:

<http://carolinaclayresourcedirectory.wordpress.com/>