

NC Commercial Galleries

continued from Page 62

teach, work and play. Hours: Thur.-Sat., 11am-5pm or by appt. Contact: 828/243-0200 or at (www.workinggirlsstudio.com).

ZaPow!, 21 Battery Park, Suite 101, Asheville. **Ongoing** - The vast diversity that is found among the art galleries here in Asheville is one of the many reasons to come and visit this unique town. Each gallery offers a different flavor. We are the Asheville art gallery for fun, whimsical, quirky and even geek art. We are the Asheville gallery that appeals to art aficionados as well as the average Joe. Stop by and see what we're all about. Hours: Mon.-Thur., noon-8pm; Fri., noon-10pm; Sat., 11am-10pm; & Sun. 1-6pm. Contact: 828/575-2024 or at (www.zapow.com).

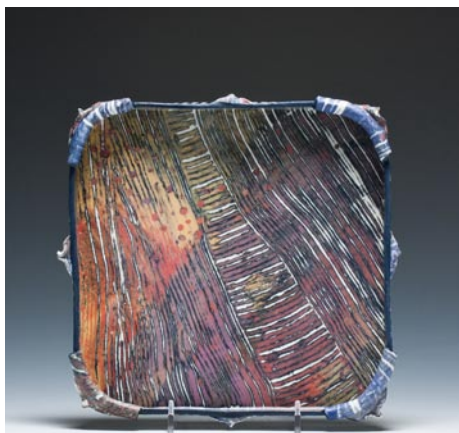
ALTERNATE ART SPACES - Asheville
Adler Gallery, inside Posana Cafe, 1 Biltmore Ave., located in historic pack square of downtown Asheville. **Through June 26** - "Celebration of the Weed," featuring works by Nancy Hilliard Joyce. The exhibit will unveil 30 colorful, up-close, dynamic paintings of dandelions & queen anne's lace. Hours: Mon.-Fri., 11am-3pm & 5pm-9pm and Sat. & Sun., 10am-3pm & 5pm-9pm. Contact: 828/505-3969.

The Captain's Bookshelf, 31 Page Ave., Asheville. **Ongoing** - Featuring original art, prints and poetry broadsides are displayed along with a quality selection of secondhand and rare books. Hours: Tue.-Sat., 10am-6pm. Contact: 828/253-6631 or at (<http://www.captainsbookshelf.com/>).

Atlantic Beach

Vision Gallery, 407 Atlantic Beach Causeway, Atlantic Beach. **Ongoing** - Featuring original paintings and three-dimensional work from regional and national artists, and one and two-person shows in summer months. Hours: 10:30am-5pm, closed Wed, Sun. Contact 252/247-5550 or at (www.twogalleries.net).

Bakersville



Work by Lana Wilson

Crimson Laurel Gallery, Blevins Building, 23 Crimson Laurel Way, Bakersville. **Through Apr. 25** - "Animated Lines and Soft Planes: Ceramics by Deborah Schwartzkopf". Schwartzkopf uses yield complex forms defined by animated lines and soft planes. Multiple parts are pieced together. At times she combines wheel thrown and hand built parts and at others a singular method is used. **Through Apr. 25** - "In the Mix: A Ceramic Artists Forum". The exhibition highlights these artists, their work and their continuous commitment to the ceramic field. Participating artists include Benjamin Carter, Elisa DiFeo, David Eichelberger, Carole Epp, David Lee Gamble, Tracy Gamble, Rachel Garceau, Alex Irvine, Elizabeth Kendall, Roberta Massuch, Richard Nickel, Kelly O'Brian, Sandi Pierantozzi, Nathan Prouty, Adams Puryear, Emily Reason, Shawn Spangler, Natalie Tornatore, and Lana Wilson. **Ongoing** - Featuring the largest selection of studio ceramics in Western North Carolina, including some of the finest art and craft to be found anywhere in Appalachia. We also represent select artists from around the country and their unique artwork. Representing more than 90 artists. Hours: Tue.-Sat., 10am-6pm and open daily Oct. - Dec. Contact: 828/688-3599 or at (www.crimsonlaurelgallery.com).

Mica - Fine Contemporary Craft, 37 N. Mitchell Avenue, Bakersville. **Re-opening Apr. 4. Ongoing** - Our cooperative gallery currently has eleven members who are from the Bakersville, Penland, and Burnsville areas including: Jon Ellenbogen & Becky Plummer, Kent McLaughlin & Suze Lindsay, Gertrude Graham Smith, Susan Feagin, Cynthia Bringle, David Ross, Shaunna Lyons, Joy Tanner, William Baker, Claudia Dunaway, Jenny Lou Sherburne, Jacque Allen, and Pablo Soto. Visit any day and you're likely to meet

one or two of the Mica artists. Hours: Thur.-Sat., 10am-5pm & Sun., noon-5pm. Contact: 828/688-6422 or at (<http://www.micagallerync.com>).

Michael Kline Pottery, 4062 Snow Creek Road, Bakersville. **Ongoing** - Featuring pottery by Michael Kline and jewelry by Stacey Lane. Contact: call 828/675-4097 or visit (<http://michaelklinepottery.blogspot.com/>).

Banner Elk Area

Alta Vista Gallery, 2839 Broadstone Road, (between Banner Elk and Boone) Valle Crucis. **Ongoing** - Featuring fine art gallery in historic farmhouse, located near the Original Mast General Store. In its 20th year and representing over 100 artists, the gallery specializes in oils and watercolors depicting mountain landscapes. Artists include: B. Jean Baird, Alan McCarter, Louise Pinto, Jean Pollock, Ray Byram, Joan Sporn, Elizabeth Ellison, Dotti Shelton. Also shown are original lithographs and original serigraphs from internationally-acclaimed artists such as ALVAR, Boulanger, and folk artist Will Moses, great-grandson of "Grandma Moses." Also: kaleidoscopes, stained-glass, pottery, jewelry, sculpture, and custom framing. Designer Bed-and-Breakfast rooms on-site. Open all year; hours vary according to season. Summer/Fall Hours: 11 am-5pm daily, except for Sun., which are by appt. Contact: 828/963-5247 or at (www.altavistagallery.com).

Art Cellar Gallery, 920 Shawneehaw Ave., Hwy 184, Banner Elk. **Ongoing** - Three floors of exhibition space featuring painting and sculpture from regionally and nationally known artists. Featured artists include: William Dunlap, Herb Jackson, Gregory Smith, Norma Murphy, Tim Turner, Deborah Jacobs Purves, Bill Brown, Scott Boyle, Margaret Salisbury, and others. Hours: Mon.-Sat., 10am-5pm. Contact 828/898-5175 or at (www.artcellaronline.com).

Carlton Gallery, 10360 Hwy 105 South, Grandfather Community, near Linville. **Ongoing** - Featuring the work of over 200 local, regional & national artists presenting fine art, woven works, sculpture, jewelry, pottery and contemporary crafts. Hours: Mon.-Sat., 10am-5pm & Sun., 11am-5pm. Contact: 828/963-4288 or at (www.carltonartgallery.com).

Sally Nooney, Artists Studio Gallery, located midway between Banner Elk & Valle Crucis on Hwy 194 So. **Ongoing** - Featuring the rich, vibrant works of Sally Nooney in oil, acrylic, and watercolor. Hours: Tue.-Sat., 10am-5pm. Contact: 828/963-7347 or at (www.sallynooney.com).

Beaufort

Landscapes Gallery Fine Arts and Crafts, 410 Front Street, Beaufort. **Ongoing** - The Gallery promotes American traditions in pottery, jewelry and glasswork with an emphasis on North Carolina artists. Over 200 artists are represented in a full range of work from the traditional to the contemporary in pottery, glass, jewelry, metal, wood and other media. Hours: Mon.-Sat., 10am-6pm & Sun., 10am-5pm. Contact: 252-728-6805 or at (<http://www.landscapesgallery.com/>).

Belmont

JS Pottery Antiques and Collectibles, 27 North Main Street, Belmont. **Ongoing** - Offering pieces ranging from face jugs, vases, pitchers and planters with hand-painted iris, dogwood, and magnolia designs to beautiful hand-carved North Carolina lighthouses. Hours: Mon.-Sat., 9am-6pm & Sun., noon-5pm. Contact: 704/829-0360 or at (www.jspottery.com).

Black Mountain/Montreat/Swannanoa

Acoustic Corner, 105 F Montreat Rd, Black Mountain. **Ongoing** - Acoustic instruments hand-made or manufactured by hand in small factories. Guitars, mandolins, bouzoukis, banjos, violins, lap dulcimers, and other instruments popular in Celtic, Old-Time, Bluegrass, and other folk genres. Plus all accessories. Hours: Mon.-Fri., 10am-7pm & Sat., 10-5pm. Contact: 828/669-5162.

Black Mountain Iron Works, 120 Broadway, Black Mountain. **Ongoing** - Featuring works handcrafted in iron & other metals by Tekla and Dan Howachyn. Hours: Mon. -Sat., 10am-5pm. Contact: 1/888/689-9021 or at (www.BlackMountainiron.com).

Black Mountain Quilts, 121 Cherry St., Black Mountain. **Ongoing** - Heirloom quality quilts, accessories, handbags, tabletop, and baby quilts. Hours: Mon.-Sat. 10-6pm & Sun. 12-

5pm. Contact: 828/669-0730.

Black Mountain Studios Inc., 626 Lytle Cove Rd., just 3 miles from downtown Black Mountain, Swannanoa. **Ongoing** - A fine pottery craft and art gallery featuring many local as well as some nationally known artists. Owner and operated by award winning potters Austin and Maud Boleman. Hours: 11am-6pm seven days a week. Contact: 828/686-1011.

Cherry Street Gallery, 132 Cherry Street, Black Mountain. **Ongoing** - Featuring arts and crafts by regional artisans. Hours: Mon. - Sat., 10am-5pm & Sun., 1-5pm. Contact: 828/669-0450.

Garrou Pottery, 100 State St., Black Mountain. **Ongoing** - Featuring a wide variety of handmade pottery by father and son, John and Derrick Garrou, and the works of other area craftsmen. Hours: Mon.-Sat., 11am-5pm. Contact: 828/669-0222.

Seven Sisters Gallery, 117 Cherry Street, Black Mountain. **Ongoing** - Featuring a large selection of arts and crafts by local, regional and national artists. Hours: Mon.-Sat., 10am-6pm & Sun., noon-5. Contact: 828/669-5107 or at (www.sevensistersgallery.com).

Song of the Wood, 203 West State St., Black Mountain. **Ongoing** - Home of rare, one of a kind, handcrafted musical instruments and enchanting recordings. Come enjoy our intimate approach to the senses. Hours: Mon.-Sat., 10am-5pm. Contact: 828/669-7675.

Sourwood Gallery, 110 Broadway, Black Mountain. **Ongoing** - Featuring a co-op gallery of local artists offering original art for sale, including: paintings, pottery, jewelry, photography, stained glass and other fine art. Artists are: Kent A. Barnes, Katrina Bass, Judith Bush, Sarah Campbell, Charley, Ruth Connor, Denise Geiger, Jean Hope, Elizabeth Kirk, Ida O'Connell, Billy Ogle, Eileen Ross, Marilyn Sobanski, Jenean Stone, Susan Taylor, Summer G. Ventis, Ann Whisenant, and Katherine Youtz. Hours: Thur.-Sat., 11am-4pm. Contact: 828/669-4975.

Studio 103 Fine Art Gallery, 103 West St, Black Mountain. **Ongoing** - Owned and curated by photographer Rebecca D'Angelo, the gallery will feature monthly shows by local and national artists. It will also offer local art and crafts for sale in its retail section. Hours: Wed.-Sat., noon-6pm or by appt. Contact: call Rebecca D'Angelo at 828/357-8327 or at (www.studio103fineartgallery.com).

Ten Thousand Villages, 303 Lookout Rd., Montreat. **Ongoing** - Fair trade source for handmade items from more than 30 countries in Africa, Asia and Latin America. Hours: Mon.-Sat. 10am-5pm. Contact: 828/669-1406.

The Gingko Tree Photo Gallery & Frame Shop, 128 Broadway, Black Mountain. **Ongoing** - Gifts, cards, prints, photography and framing. Hours: Mon.-Fri., 10am-5pm & Sat., 10am-4pm. Contact: 828/669-7721.

The Old Depot Arts & Crafts Gallery, intersection of Sutton and Cherry Streets, Black Mountain. **Ongoing** - A non-profit arts/crafts gallery representing local artists. Proceeds support arts in the schools program. Pottery, folk art and more. Hours: Tue.-Sat., 10am-5pm & Sun., 1-5pm. Contact: 828/669-6583.

Visions of Creation Gallery, 114 Cherry State Street, Black Mountain. **Ongoing** - Featuring unique, contemporary fine gold jewelry of incomparable beauty and quality handcrafted by Robert Vengoechea. Hours: Tue.-Sat., noon-6pm & Sun., 1-5pm. Contact: 828/669-0065.

Blowing Rock

IAGO, 1165 Main St., Blowing Rock. **Ongoing** - Featuring inspired, contemporary, fine art and handcrafts from a variety of artists working in the fields of jewelry, fashion accessories, art glass, functional art for the home, pottery, lighting, furniture, and garden art. New for 2006 are huge art glass bowls and platters from Dennis Mullen, raku mirrors and wall pieces by Bonnie J. Smith, and Sasaki crystal. New jewelry lines for 2006 include Tashi, Chenille, Messina Designs, and Jeannine and Charles Mackenzie. Reappearing at Iago this year are wall sculptures by David Bowman, tall iron vases from David Coddair, Blowing Rock scenes in watercolors by local artist, Tom Gruber, mountain and piedmont landscapes in acrylics from Ginny Chenet, art glass from Ioan Nemtoi, the finest in glass pumpkins and hummingbird feeders from Jack Pine, and pottery from Jan Phelan, and Ed and Julie Rizak. Hours: daily, 10am-6pm. Contact: 828/295-0033 or at (www.iagoblowingrock.com).

Main Street Gallery, 960-5 Main St., Blowing Rock. **Ongoing** - Featuring a co-op of

area artists that has been opened since 1982. The gallery offers baskets, pottery, weaving, photography, jewelry, woodworking, glass art, fibers and much more. Hours: daily, 10am-6pm. Contact: 828/295-7839.

Morning Star Gallery, 915 Main Street, across the street from the Speckled Trout Cafe, Blowing Rock. **Ongoing** - Featuring oil and acrylic paintings by Ann Thompson featured with ceramic bas-reliefs and sculptures from the studios of John Martin and Maryanne Bona Dayman and wildlife carvings by H. Gray Turner. Rod Shaw's terra cotta sculptures. Also, multiplate etchings, watercolors, jewelry, pottery, garden accessories, glass and wooden treasures. Hours: Mon.-Sat., 10am-5pm and Sun. 1-5pm. Contact: 828/295-6991.

The Bob Timberlake Gallery at Blowing Rock, 946 Main Street Blowing Rock. **Ongoing** - Featuring original artwork and reproductions by Bob Timberlake. Also furniture, gifts, apparel and collectibles. Hours: they vary - call ahead. Contact: 828/295-4855 or at (www.bobtimberlake.com).

Winterfire Craft Gallery, 1087 Main Street, Blowing Rock. **Ongoing** - Featuring pottery by Bill Campbell as well as hand-crafted jewelry, metal sculpture, hand-thrown pottery, art glass, and calligraphy prints. Hours: Mon.-Sat., 10am-6pm. Contact: 828/295-4880.

Boone

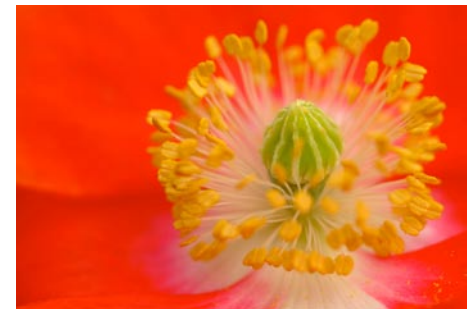
Miters Touch Woodworking, 6858 Hwy. 105 S., Foscoe, near Hound Ears. **Ongoing** - Featuring fine furniture by Denise Grohs and Miters Touch, pottery by Eric Reichard, art quilts by Linda Smith, stained glass by Dianne Radford, and wood turnings by Todd Davidson. Also cabinetwork and kitchen design services available. Hours: Mon.-Fri., 8am-5pm, Sat. 10am-2pm or by appt. Contact: 828/963-4445 or at (www.miterstouchinc.com).

Brevard - Cedar Mountain Area

Downtown Brevard, Apr. 26, 2012, 5-9pm - "Brevard 4th Friday Gallery Walk". Enjoy an evening stroll in downtown Brevard as you enjoy visiting the art galleries, art stores, retail stores and restaurants that are staying open late. Be sure to look for the 16 sculptures and five murals located in downtown as well. Galleries participating include: Art & Soul Marketplace and Gallery, Bluewood Photography, Drew Deane Gallery, Gallery on Main, Hollingsworth Gallery, Number 7 Fine Arts & Crafts Gallery, Red Wolf Gallery, Transylvania Community Arts Council, 32 Broad Gallery & Framing, Transylvania Heritage Museum, Local Color, Hunters & Gatherers, Gravy, Continental Divide, and The Eclectic Cottage. Be sure to stop by and have dinner in one of our downtown restaurants. A brochure for the gallery walks can be found at any of the participating galleries or at the Chamber of Commerce. For more information call TC Arts at 828-884-2787 or go to (www.artsofbrevard.org) and click on Art Tours.

Art & Soul Marketplace and Gallery, 120 W. Main St., Brevard. **Ongoing** - Featuring an up-scaled, eclectic gallery and artisan marketplace with the largest collection of fine art photography by Susan Stanton in the public marketplace and the works of 36 local, regional and nationally recognized artists. Works include photography, sculpture, jewelry craftsmen, paintings, ceramic sculpture, gourd art, fiber arts, home and garden designs etc. Hours: Mon.-Sat. 10am-5pm or by appt. Contact: 828/883-2787 or at (www.artandsoulmarketplace.com).

BernWell Pottery Studio and Gallery, 324 King Road, Pisgah Forest. **Ongoing** - Featuring works by Wendy Elwell and Dennis Bern. Hours: Mon.-Sat., 10am-5pm or by appt. Contact: 828/883-8300 or at (www.bernwellpottery.com).



Work by Ben Geer Keys

Bluewood Photography, 36 W. Jordan Street, Brevard. **Ongoing** - Bluewood is the oldest continuously operated gallery devoted to Fine Art Photography in Western North Carolina. In addition to its gallery space, which regularly exhibits works by well known artists, it offers in-field workshops, master classes, printing and framing services. Hours: Tue.-Sat., 10am-5pm or by appt. Contact: 828/883-4142 or at (www.bluewoodphotography.com).

Drew Deane Gallery, 114 W. Main St., across from City Hall and Brevard Fire Station, Bre-

continued on Page 64