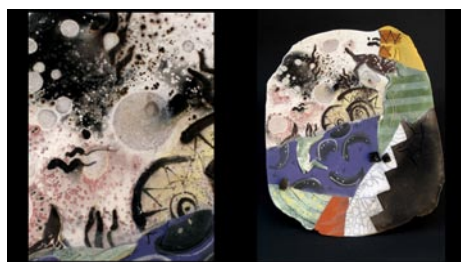


Crimson Laurel Gallery

continued from Page 40



Work by Patrick Crabb

Patrick Crabb is showing work specifically created for this show. Crabb's many influences include: A "deconstruction approach" involving shards and fragmentation which was inspired by artist Rick Dillingham from the 1970's era; Nature treks into the American Southwest where broken pot shards by the Native Americans were viewed; and International travels each year where an appreciation for other cultural and ancient artifacts was developed.

These continuous paths of discovery have taken Crabb in several, but related, directions including the container vessels, the architectural interpretations, and the human figure. Each path continues to crisscross each other allowing it to enrich the imagery year after year.

Crabb's work conveys a sense of mystery and visual power to the viewers. Ancient cultures with historical artifacts from many countries layer the imagery, resulting in a multi-cultural composition which in turn, is a reflection of our contemporary life.

From the technical side, the clay pieces are altered wheel-thrown forms, slab to press molded constructions, and fired in multiple ways such as in raku, sawdust, horsehair, low-temperature salt, and oxidation... all of which are in the low temperature range of c/06-c/02.



Works by Jason Bohnert

Jason Bohnert brings an international sensibility to his ceramic work, having completed an apprenticeship in Jingdezhen and Yixing China in addition to his graduate work at West Virginia University and his residency at the Energy Xchange near Penland, NC. A thorough understanding of the rituals associated with ceramics in China pushes him to make pots that will continue to reveal their subtleties for years of use. For him, a tea bowl is not simply for drinking tea; it is an expression of an ancient aesthetic and philosophy.

Bohnert's love of landscape, particularly that of the Southwestern United States, also powers his creative drive. "Layered slips, glazes, over-glazes, and textured surfaces in the clay create landscapes and reference lichen, stained canyon walls, and forces of erosion." Pulling from a deep appreciation for cultural traditions and the natural world, Bohnert's work will grow on you for years to come.

Steven Schaeffer's work is evidence of his experiences in the natural world. From walks in the woods, to river expeditions, these physical encounters have led him to a greater level of personal consciousness. Understanding his environment is an essential motivation for his creative process and nature is the didactic arena that Steven seeks.

"River trips by boat have led me to many places," says Schaeffer. "These vessels have been the carriers for my integration into the wild, which has allowed me to foster my personal connection with nature. As a result the form of 'boat' or 'vessel' is the inspiration core of my ideas. I'm intent on creating work that offers the notion of hope and the embodiment of strength."

This is a direct response to nature itself and the risks that are inherent within it. Nature is a collection of many of the formal qualities that interest Schaeffer and in turn influences his work.



Works by Steve Schaeffer

The work is simple in its method, yet transfers a generosity of scale to the viewer. The forms define space, and their weight is connected to the landscape they are inspired by. Within these works an entire canyon can be created with one line slicing through its surface. Schaeffer's work is about the spatial relationships he's experienced in nature and, in turn, the work has become a voice for those landscapes.

What does it mean to inhabit close quarters with another person? Especially in the arena of domestic life, the act of sharing a small space is often an interpersonal exercise in balance. The give and take of collaborative decision-making becomes a rhythmic dance that occurs between people and the objects that represent them. Eventually, color, pattern, texture and form blend within the space to reflect the relationship of those that occupy it.



Work by Lindsay Rogers

Artists Mark Errol and Lindsay Rogers respond to the idea of shared space in the domestic arena. As independent makers of ceramic objects for the home, both artists will explore how they combine their individual works to create a harmonious environment.

Outside of the domestic arena, 'Close Quarters' also emphasizes the role that profound mutual respect plays in a successfully shared space. As good friends and thoughtful makers, Errol and Rogers, view the concept of close quarters as a challenge to celebrate the diversity of their individual artistic styles while combining forces to create a cohesive representation of an idea.

For further information check our NC Commercial Gallery listings, call the gallery at 828/688-3599 or visit (www.crimsonlaurelgallery.com).

Toe River Arts Council in Spruce Pine, NC, Features Works by Blacksmiths

The Toe River Arts Council in Spruce Pine, NC, in conjunction with Spruce Pine's Fire on the Mountain Festival is presenting *Fire*, featuring works by nationally acclaimed smiths, on view through Apr. 25, 2015.

The exhibition will give visitors an op-

portunity to view iron arts and crafts in a gallery setting and to learn more about the nationally acclaimed smiths. The floor will be weighted down with large forged work while smaller, intricate hand-wrought pieces will adorn pedestals, with even more on the

continued above on next column to the right

walls. An always-fun pizza and beer reception will be held at the gallery on the eve of the Festival on Friday, Apr. 24, 2015, from 5-7pm. The public is invited to share in the evening and meet these talented artists.

TRAC's history of displaying the finest craftsmanship in iron continues for the 2015 exhibition. This year's recognized Master Blacksmith is James Viste. Viste was raised on a farm in Wisconsin, received a BS from The University of Wisconsin, La Crosse; and a MFA from Cranbrook Academy of Art, Bloomfield Hills, MI. He has worked for studios throughout Minnesota, Wisconsin, and Michigan. Viste is the manager of Edgewise Forge in Detroit, and an instructor/technician at the city's College for Creative Studies.



Work by James Viste

In his own words Viste says, "As a smith, whether a blacksmith, metalsmith, silversmith, or the like; I feel that the most rewarding part of existing within these trades is that their foundation lies in the hands-on manipulation of material and direct metal expression no matter its enthusiasm or its subtlety. No mold making, no dry times, not even glue; just pick it up, heat it up, and make it." He will be demonstrating during the festival day on lower street. With some of his best work on display at the TRAC gallery, Viste will be among the dozens of

Blowing Rock Art and History Museum in Blowing Rock, NC, Features Duck Decoy Collection

The Blowing Rock Art and History Museum (BRAHM) in Blowing Rock, NC, is excited to be displaying a prestigious collection of wooden duck decoys on loan from the Cameron Art Museum in Wilmington, NC. The exhibit, *Floating Sculpture: Bruce Barclay Cameron Duck Decoy Collection*, will be on display from Apr. 4 through July 26, 2015. A reception will be held on May 9, from 5:30-7pm.

"We're very excited to be receiving this exhibition from our friends at the CAM," says BRAHM's Interim Executive Director, Bob McCammon. "It's a unique opportunity for us to have these beautifully crafted wooden sculptures depicting an important aspect of American folk tradition on view here in the mountains."

Bruce Barclay Cameron began collecting decoys in the late 70's. This exhibition will highlight a selection of Cameron's most noted decoys and brings a collection of treasures from the coast to our mountains. Throughout his collecting, Cameron learned all about the careful craft involved in making one of these sculptures, from the nuances of the paint quality and form to the spirit of the bird itself. Each artisan took into consideration a love for the birds to really make these sculptures come to life,



James Viste working

other master blacksmiths.

The pieces showcased during the Blacksmith exhibition are of the highest aesthetic caliber, inviting profound artistic contemplation from viewers. Other works bring back to life the hand-made uniqueness of the utilitarian items of past centuries: candlesticks, andirons, tongs, skewers. All the smiths have taken a concept and brought it to completion with unparalleled artistry.

The Toe River Arts Council is a not for profit organization promoting the arts in Mitchell and Yancey Counties, and supported by donations, memberships, local government, grants (including the North Carolina Arts Council, a state agency), and supporters who understand the benefit of art in our community.

For further information check our NC Institutional Gallery listings, call the Council at 828/765-0520, or visit (www.toeriverarts.org). Visit (www.downtownsprucepine.com) for FOTM information.



Joe Lincoln of Accord, Champion Decoy Maker. Courtesy of the Cameron Art Museum.

allowing them to stand alone as works of art that can be appreciated from all directions.

Artisans included are: A. Elmer Crowell from Cape Cod, MA; Joseph Lincoln from Accord, MA; Hucks Caines from Georgetown, SC; the Ward Brothers, Lemuel and Stephen from Crisfield, MD; Mitchell Fulcher of Stacy, NC; and Ned Burgess of Duck, NC. Also on view will be *Spirit of the Bird*, a film directed by James Spione.

For further information check our NC Institutional Gallery listings, call the Museum at 828/295-9099 or visit (www.blowingrockmuseum.org).

Carolina Arts is now on
Twitter!
 Sign up to follow
 Tom's Tweets, click below!

follow us on
twitter

twitter.com/carolinaarts