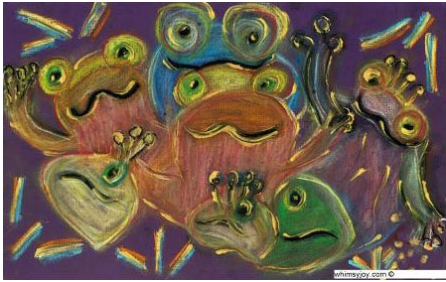


Whimsy Joy® by Roz

Now on display and for sale at Roadside Seafood
807 Folly Road on James Island • Charleston, SC



Family of Frogs --Healing Families In Color

- "We Are Frogs; Can't You See?"
- "Can You Jump Like Him and Me?" . . .
- "In the Day, We Look Up At the Sun."
- "At Night, the Moon Shines In the Dark Sky."
- "Come And Play and Have Some Fun."
- "You Can Jump and We Can Run!"
- "WhimsyJoy's Family Taught Her To Love and Hug."
- "She Was Taught To Pass It on To You!"
- "Have you learned? Have You Accepted?"
- "Can We Join Together? Can We Make It Work?"
- "Sure We Can; Work Doesn't Hurt!"

Images are available on:
Prints • Notecards • T Shirt
Decals • Aprons • Stickers
Calendars • Mousepads
Children's Paint Smocks



I am gorgeous...
Can't you see I'm really cute!
Put me on your personal
mousepad for \$12.00

Check my website for new
whimsies!

All images are copyrighted

Rosalyn Kramer Monat-Haller
M.Ed., LLC

Counseling for Children, Adolescents, & Adults
Mother, Grandmother, Daughter, Friend, Psycho therapist
and Artist who uses color and whimsical imagination
to create joyful art for children of all ages

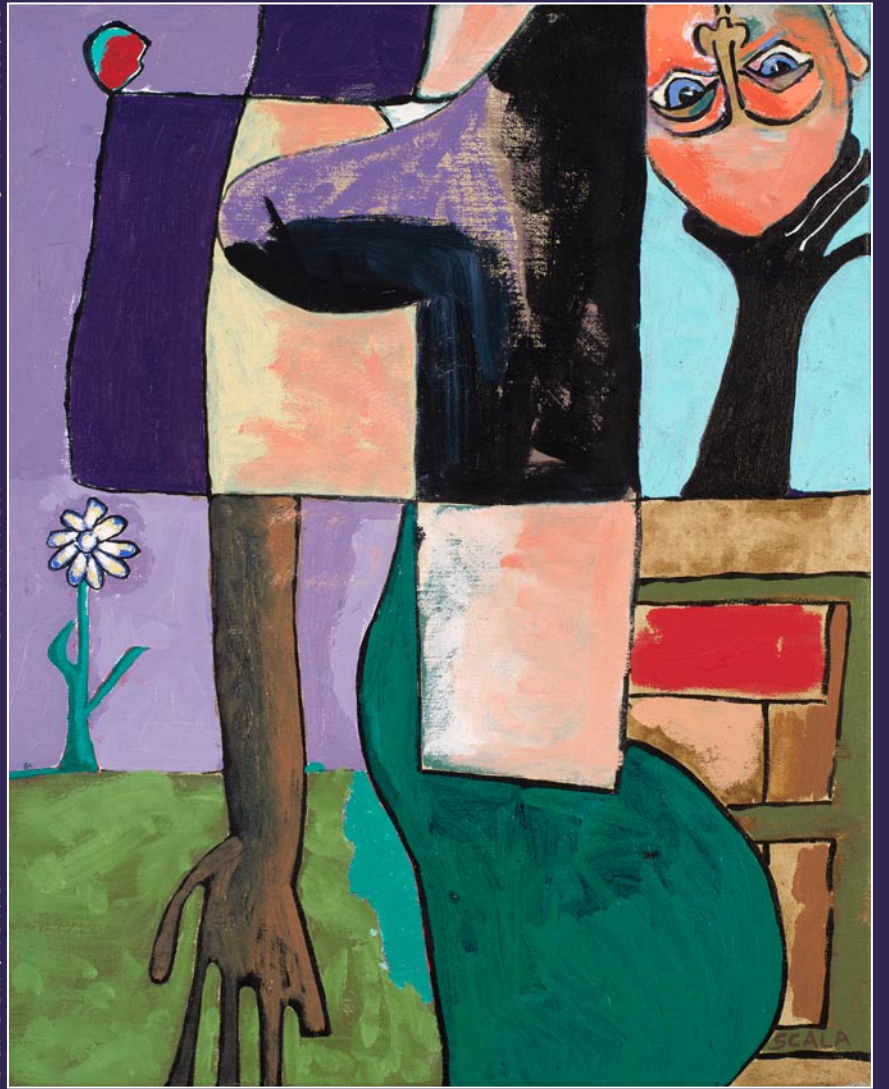
www.whimsyjoy.com
843-873-6935

SCALA Surrealist Painter

29 x 16 inches

oil on linen

"Garden Flower"



Now showing at AAWS Gallery
Winston-Salem, NC

www.peterscala.com • Studio: 843-225-3313

Robert Lange Studios

continued from Page 9 / [back to Page 9](#)

"This body of work is intentionally dreamy, idealistic and lush. I'm painting figurative beauty and veiling it with visions of nature. I then weave these painted tapestries with silver leaf. When the paintings are observed as the surrounding light changes, the silver leaf allows the negative spaces in the compositions to literally transform. What I hope to portray is a little mystery, reflection and reverence for my natural and figurative muses by poetically superimpos-

ing these painted layers," said Stratton.

Robert Lange recalls being introduced to Stratton in Savannah, GA, over ten years ago: "We were very young gallery owners and I remember meeting June in her gallery and thinking how amazing it would be if someday she showed in our gallery."

For further information check our SC Commercial Gallery listings, call the gallery at 843/805-8052 or visit (robertlangestudios.com).

4th Wall in Charleston, SC, Offers Works by Dorian Warneck

The 4th Wall in Charleston, SC, formerly known as Jericho, Inc., will present *Neighbors - A Photo Exhibit* by Dorian Warneck, on view from Apr. 20 through June 1, 2016. An Artist Talk will be offered on Apr. 20, at 5:30pm, with a reception from 6-9pm.

Neighbors began with Warneck shooting portraits of the people who lived in the houses surrounding his downtown home. The project quickly transformed into a self-published zine featuring a wider array of his candid street photography as well as street portraits. Warneck uses street photography as a means to observe the world around him, gravitating towards the mundane, commonly overlooked moments.



Work by Dorian Warneck

For further information or an appointment to view the exhibit contact Alexandra Danna at 843/212-8482 or visit (www.4thwallchs.com).

You can send us snail mail to: Carolina Arts,
511 Hildebrand Drive, Bonneau, SC, 29431

The deadline each month to submit articles, photos and ads is the 24th of the month prior to the next issue. This will be Apr. 24th for the May 2016 issue and May 24 for the June 2016 issue.

After that, it's too late unless your exhibit runs into the next month. But don't wait for the last minute - send your info now. And where do you send that info?

E-mail to (info@carolinaarts.com).



Cooperative Gallery
Featuring Lowcountry Artists



Kris Westerson, paper and books
Anne John, Pottery
Marc Tannenbaum, wood

Art to Use and Give

161 Church Street • Charleston, SC
charlestoncrafts.org • 843-723-2938