

Asheville Art Museum in Asheville, NC, Offers Look at Photography Collection

The Asheville Art Museum in Asheville, NC, is presenting *Vault Visible: Photographs*, which demonstrates the photography collection's scope, along with antique cameras loaned by Warren Wilson College, on view in the Holden Community Gallery, through June 30, 2016.

The Asheville Art Museum's permanent collection contains over 500 photographs that are typically kept in the "vault" where they are protected from deterioration and cared for by curators. There is a wide variety of techniques and processes represented in the collection, with works by acclaimed artists such as Eadweard Muybridge, Diane Arbus, Edward Weston and Louise Nevelson. While selections of photographs are in rotation and can regularly be seen in the Museum's galleries, the Collection is too expansive to view all at once.

The exhibition, which is a section of the broader exhibition *Vault Visible: Behind the Scenes at the Asheville Art Museum*, provides an excellent opportunity for in-depth learning about different cameras and photographic processes throughout the last 150 years.

Silver gelatin, platinum, cibachrome, digital and infrared photographs are some of the types of photography explored in the exhibition. An 1865 example of a daguerreotype, the photographic method that shortened exposure time from hours to 10 minutes, is on view as well as a modern interpretation of this same technique. Multimedia work, photo-editing and other innovative approaches to the medium are



Blythe Bohnen, "Self-Portrait: Horizontal Elliptical Motion", Small, 1974, silver gelatin print, 15 x 18.87 inches. Asheville Art Museum Permanent Collection. 1992.06.3.91.

seen throughout *Vault Visible: Photographs*.

Founded by artists in 1948 in Asheville, NC, the Asheville Art Museum annually presents an exciting, inviting and active schedule of exhibitions and public programs based on its permanent collection of 20th and 21st century American art. Any visit will also include experiences with works of significance to Western North Carolina's cultural heritage including Studio Craft, Black Mountain College and Cherokee artists. Special exhibitions feature renowned regional and national artists and explore issues of enduring interest. The Museum also offers a wide array of innovative, inspiring and entertaining educational programs for people of all ages.

For further information check our NC Institutional Gallery listings or visit (www.ashevilleart.org).

Asheville Area Arts Council in Asheville, NC, Features Works by Local Artists

The Asheville Area Arts Council in Asheville, NC, will present *An Artful Life*, featuring works by seven master artists, on view from Apr. 8 through May 14, 2016. A reception will be held on Apr. 15, from 5-8pm.

This exhibition is part of the Asheville Area Arts Council's program "Point of View: Artists Curate Artists," which was founded in 2013. The theme of the show is "An Artful Life," which focuses on honoring, recognizing, and showcasing some of our area's lifelong artists. The seven contributing highly accomplished master level artists in this show are: Diane LaRose, Bob Martin, Jean Wall Penland, Bernie Segal, and Monika Teal with the co-curators Nadine Charlsen and Fleta Monaghan.

The Geezer Gallery, a new program at the Council on Aging of Buncombe County, is producing this exhibition of local master artists. The program provides a free 10-week creative arts program to low income older adults and creates opportunities for area senior artists to exhibit and sell their work. This show marks the program's first annual exhibition of Master Level visual artists.

Dr. Turner Goins, the Program Director, stated, "We live in an amazing arts community; our program takes advantage of this, honors lifelong artists and brings creative arts to more older adults. When we first approached the Arts Council a little over a year ago, they expressed a strong interest in supporting this project. We could not be more pleased about this partnership with the Asheville Area Arts



Work by Monika Teal

Council and to have these exceptional artists exhibiting. It is thrilling to sponsor this show, and be a part of the joining of missions between our two Buncombe County nonprofits."

Fleta Monaghan, one of the show's curators, says, "It has been an exhilarating and moving experience to work with each artist. Viewing the work in their studios has been like walking into a fine arts museum filled with precious treasures. Our community has a wealth of talent, and working with the long time masters invited to be in this show has been an honor. Seeing the dedication and perseverance of each artist is an inspiration. The artists have been energized by the recognition this show bestows, and being exhibited together is a historic event."

For further information check our NC Institutional Gallery listings, call the gallery at 828/258-0710 or visit (<http://ashevillearts.com/>).

Woolworth Walk in Asheville Offers Works by Dona Barnett & Keith Phillips

Woolworth Walk in Asheville, NC, will present *Dona Barnett + Keith Phillips*, on view in the FW Front Gallery, from Apr. 1 - 29, 2016. A reception will be held on Apr. 1, from 5-7pm.

Keith Phillips earned a BFA from East Carolina University with a studio focus in printmaking. After college, he picked a random spot on the map, packed up and headed to Missoula, MT. Always painting and drawing, life lead Phillips to a career

as a designer working for various online companies in the 90's. With the crash of the Internet Boom, he found himself jobless with a wife and two kids to support.

In a moment of serendipity, he was employed as an assistant to ceramic artist Walker Davis, who was once a bum on the streets of Spokane, WA. In addition to the ceramic craft, Walker taught Phillips to "live poor". He bought her old kiln for

continued above on next column to the right

www.theartistindex.com

search

- artist directories
- non-profit gallery directory
- more
- getting listed
- FAQs
- contact

acsltech ENTERPRISE

B the methods...to the madness
SHARED EXPERIENCES IN ART & ART MAKING

This blog is a forum in which guest contributors present their thoughts and experiences. Topics range from tricks of the trade to tips about the business of art to more philosophical musings about the roles of art makers and art users in society. Sharing is the name of the game, so feel free to add to the collective experience.

TERRY JARRARD-DIMOND: My Thoughts on Juried Exhibitions

"...juried competitions are one of the major avenues for artists to get their work shown and in front of an audience beyond their immediate area. I myself found them to be the best avenue to present my work as I began to show work a few years ago. As I thought about the concept of juried shows, I began to consider how I go about selecting which shows to enter..."

Tweets

Follow @theARTISTIndex

The Artist Index @theARTISTIndex
NEW FEATURED on The Artist Index
[facebook.com/photo.php?fbid...](https://www.facebook.com/photo.php?fbid...)

The Artist Index @theARTISTIndex
9 Jul
SC Watermedia Soc. reception 4 to 6 on July 13, at the Coastal Discovery Museum on Hilton Head Island, SC
[facebook.com/photo.php?fbid...](https://www.facebook.com/photo.php?fbid...)

The Artist Index @theARTISTIndex
9 Jul
Saturday, July 13th - 2nd Saturdays at Town Creek Indian Mound, MONTGOMERY CNTY
[facebook.com/photo.php?fbid...](https://www.facebook.com/photo.php?fbid...)

Tweet to @theARTISTIndex

theartistindex.com
You like this

You and 425 others like theartistindex.com.

Facebook social plug-in

FREE LISTINGS FOR

western n.c. & upstate s.c.

* * * **artists** * * *

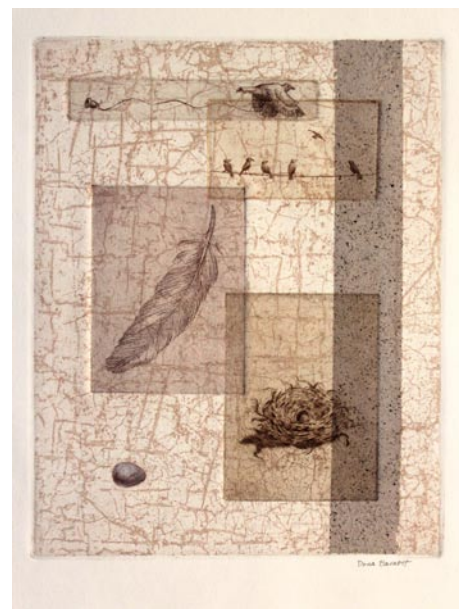
www.theartistindex.com/getting-listed

\$200, and started making his own wares. Between pottery, freelance graphic design and creating art in fabrics, bills started to get paid again. Over the years he worked using a variety of methods and processes. The method and process is really what intrigues him as a maker. So it's natural for him to make functional wares to give his work a purpose and meaning.

Today most pots are thrown on the wheel, but involve a fair amount of hand building before being finished. Adding layers and layers of embellishment gives the pots depth and pictorial qualities. Phillips uses stencils, silkscreen, washes and decals to achieve these patterns and textures. Using a variety of methods to transfer images onto the piece satisfies his inner printmaker.

After 16 years of being a self-taught artist, Dona Barnett entered UNC-Asheville and graduated with a BFA degree with honors 9 years later in 2012. She began to focus on printmaking when offered a studio in the River Arts District a year later, using non-toxic techniques she researched independently as an alternative to the traditional printmaking techniques taught at UNCA.

The imagery in Barnett's art is often an outworking of her faith as she tries to understand hope in the face of chaos and human suffering. She uses the best traditional materials she can afford as well as



Work by Dona Barnett

found materials. This is a way of "redeeming" what would normally be thrown out, lending dignity and beauty to them as a metaphor for hope. This body of work is a reflection of a search for a new reality in the face of loss. Come meet Barnett and Phillips and enjoy the opening reception and first art walk of the year.

For further information check our NC Commercial Gallery listings, call the gallery at 828/254-9234 or visit (www.woolworthwalk.com).

310 ART in Asheville, NC, Celebrates Its 10th Anniversary

310 ART in Asheville, NC, will celebrate its 10th Anniversary with a gala party on Apr. 29, 2016, from 4-7pm. There will be refreshments, lots of artists on hand, some demos and more.

This year marks the 10th anniversary of 310 ART. Located at Riverview Station in the River Arts District, the venture began in 2006 in one room, a 380 sq. ft. space that served as a classroom, a space to show original artwork by founder Fleta Monaghan and also a working studio

daily. Since then, the space has grown in size and evolved into a unique studio.

Now five working artists have studio work space, the large gallery shows the work of twenty-five local fine artists and artisans and the original room is a dedicated classroom. In the current season the school offers courses taught by nine local accomplished artists and three traveling artists who are published authors and nationally known instructors.

continued on Page 27