

SC Institutional Galleries

continued from Page 51

864/596-3501 or e-mail (scha@spartanburghistory.org).

UPSTATE Gallery on Main, 172 E. Main Street, Spartanburg. **Through Apr. 30** - "Manifest Fiction," featuring a solo exhibition of new small-scale collages by Evan Clayton Horback, a noted visual artist living and working in Olympia, WA. **Ongoing** - The gallery is dedicated to contemporary and original exhibitions that include selections from the permanent collection by artists Andy Warhol, Jerry Uelsmann and Beatrice Riese. Hours: Tue.-Sat., noon-5pm or by appt. Contact: Jane Allen Nodine, director by e-mail at (jnodine@uscupstate.edu), call 864/503-5838, or Mark Flowers, exhibits coordinator by e-mail at (mflowers@uscupstate.edu), or call 864/503-5848.

West Main Artists Cooperative, 578 West Main St., Spartanburg. **Through Apr. 16** - "Adios Amigos!" a final exhibition of works by Teresa Prater before her upcoming retirement and relocation to New Mexico. Both old and new paintings, drawings, photographs, artist books, and prints will be exhibited and for sale as an opportunity for collectors to add unique works of art to their collection.

Ongoing - Featuring a twenty thousand square foot facility offering affordable studio space and featuring works by 50 local artists. Come to see works from local artists, attend workshops, shop in the retail store, or meet any of the artists in their studios. Hours: Thur., 3-6pm; Sat., 10am-4pm; with extended hours on the 3rd Thur. of each month until 9pm for Spartanburg's Art Walk. Contact: 864 804-6501 or at (www.westmainartists.org).

ALTERNATE ART SPACES - Spartanburg **Campus of University of South Carolina Upstate**, 800 University Way, Spartanburg. **Ongoing** - "USC Upstate Outdoor Sculpture Collection". Available to viewers year-round, these 13 works can be seen in front of the Campus Life Center, the Humanities and Performing Arts Center, the Horace C. Smith Science Building, Tukey Theatre and the Kathryn Hicks Visual Arts Center. While the majority of the outdoor sculptures belong to internationally acclaimed artist Bob Doster, other artists included are Jim Gallucci, Daingerfield Ashton, Winston Wingo, Dan Millsbaugh, Adam Walls, and Hanna Jubran. Cell phone tour info at (864-607-9224). For more info contact Jane Nodine at 864/503-5838 or e-mail to (jnodine@uscupstate.edu).

Headquarters Library, Spartanburg County Public Libraries, 151 South Church Street, Spartanburg. **AT&T Exhibition Lobby, Through May 5** - "4th Annual Collegiate Invitational Art Exhibition". The schools participating are: Anderson University, Clemson University, Converse College, Greenville Technical College, Lander University, North Greenville University, USC Upstate and Wofford College. The reception and awards ceremony that is open to the public will be held on Apr. 9, from 7-9pm. **Ongoing** - Displaying exhibitions year round ranging from art exhibits to local history to nationwide exhibits of varying topics. Hours: Mon.-Fri., 9am-9pm; Sat., 9am-6pm; and Sun., 1:30-6pm. Contact: Miranda Mims Sawyer by e-mail at (mirandas@infodepot.org) or call 864/285-9091 or Andy Flynt by e-mail at (andyf@infodepot.org) and call 864/596-3500 ext. 1217. **The Upper Level Gallery (administrative office on the 3rd floor), Ongoing** - Display local artisans artwork. Hours: Mon.-Fri., 9am-5pm. Contact: Miranda Mims Sawyer by e-mail at (mirandas@infodepot.org) or call 864./285-9091.

Summerville

ALTERNATE ART SPACES - Summerville **Azalea Park**, Main Street and West Fifth Street South, Summerville. **Ongoing** - Featuring 21 pieces of sculpture in Summerville's permanent outdoor collection donated by Sculpture in the South and a few others in other locations in Summerville. One of the sculptures is located in Hutchinson Park, Summerville's Town Square. Hours: daylight hours. Contact: 843/851-7800 or at (www.sculptureinthesouth.com).

Walterboro

SC Artisans Center, 334 Wichman Street, 2 miles off I95, exits 53 or 57, Walterboro. **Ongoing** - Featuring work of nearly 450 of the SC's leading artists. The Center offers educational and interpretive displays of Southern folklife. Its mission is to enhance the appreciation and understanding of the rich cultural heritage of South Carolina. **Also** - "Handmade: A Celebration of the Elements of Craft". Artists and craftsmen from all over the state will sit on the porch of the center creating their artwork. This event takes place every 3rd Sat. of each month 11am-3pm. Hours: Mon.-Sat., 10am-6pm & Sun., 1-6pm. Contact: 843/549-0011 or at (http://www.scartisanscenter.com/).

Indigo Gallery, 809 Bay St., Beaufort. **Ongoing** - Featuring a gallery of fine art, including a unique selection of paintings by local and regional artists. Represented are: Sandra Baggett, Alison Crossman, Gloria Dalvini, Janet Mozley, and Polly Swenson. Also: Peter Pettegrew, Kelley Sanford & Liz Reitz. Fine custom framing is also available. Hours: Mon.-Sat., 10am-5pm. Contact: Janet Deaton 843/524-1036.

Longo Gallery, 103 Charles Street, Beaufort. **Ongoing** - Featuring new works including paintings, collages and constructions by Eric Longo & sculptures by Suzanne Longo. Hours: Mon.-Sat., 10am-5pm. Contact: 843/522-8933.

Ly Bensons Gallery & Studio, 211 Charles Street, Beaufort. **Ongoing** - Featuring the exhibits, "The Gullah/African Link" and "Out of Africa," featuring rare Shona Verdite sculptures by various artists from Zimbabwe, Africa, and original photographs by Gullah photographer and gallery owner Rev. Kenneth F. Hodges. Also, an array of antiques, batiks, and artworks for the discerning collector. Hours: Mon.-Sat., 10am-5:30pm. Contact: 843/525-9006 or at (www.lybensons.com).

Rhett Gallery, 901 Bay St., Beaufort. **Ongoing** - Featuring prints and paintings of the Lowcountry by four generations of artists, wildfowl carvings by William Means Rhett, antique prints & maps, Audubons, and Civil War material. Hours: Mon.-Sat., 9am-5:30pm; Sun. 11am-2pm. Contact: 843/524-3339 or at (www.rhettgallery.com).

The Craftseller, 818 Bay St., Beaufort. **Ongoing** - Featuring unique works by American artists in pottery, jewelry, metal, glass, textiles, wood, painting and kaleidoscopes. Hours: Mon.-Sat., 10am-6pm and Sun., noon-4pm. Contact: 843/525-6104 or at (www.craftseller.com).

Belton

Carlene Shuler Brown Gallery, 3605 Old Williamston Road, Belton. **Ongoing** - Original watercolor paintings and prints by Carlene Shuler Brown. Also acrylic collages and paper collages using stained papers, oriental papers and lace papers by Carlene Shuler Brown. Commissioned paintings Painting and drawing classes are offered. Custom framing is offered also. Hours: Mon.-Fri., 10am-5pm or by appt. Contact: 864/225-3922.

Bluffton

Calhoun Street Gallery, 44 Calhoun Street, Bluffton. **Ongoing** - Featuring SC artists Michael Story and Jane Word, and local Bluffton artists Robert Sefton, Judith Beckler, Jay Kenaga, Linda Schwartz, Rima Bartkiene, as well as 18th & 19th century antique art, and many more. Hours: Mon.-Sat., 11am-5pm & Sun., noon-3pm. Contact: 843/837-4434 or at (www.redschoolhouseantiques.com).

Four Corners Art Gallery and Fine Framing, 1263 May River Rd., Historic District, Bluffton. **Ongoing** - Featuring works by 12 artists with an especially local flavor. The works are in acrylic, oil, mixed media, pen and ink, pottery and wire sculpture. A real treat. We have a fine collection of custom picture frame mouldings and an experienced staff to work with anything from the unusual to the museum treated piece. Hours: Mon.-Fri., 10am-5:30pm & Sat., 11am-2pm. Contact: 843/757-8185.

La Petite Gallerie, 56 Calhoun Street, adjacent to "The Store" in that charming and historic building Bluffton. **Ongoing** - Featuring works by five local artists that have combined forces to show their work. It is "an intimate little gallery with fine local art," as the owners proclaim. It features works in oil, acrylic, pastel, watercolor and mixed media by Peggy Duncan, Emily Wilson, Don Nagel, Margaret Crawford and Murray Sease. There is also lovely blown glass art by the Savannah artists at Lowcountry Glass, and whimsical and soulful clay pieces by sculptor Toby Wolter. Hours: Tue.-Sat., 11am-5pm. Contact: 843/304-2319 or e-mail at (lapetitegalerie9@gmail.com).

Maye River Gallery, 37 Calhoun St., Bluffton. **Ongoing** - Featuring works by: Anne Hakala, Barb Snow, Bobsy Simes, Carrol Kay, Diane Dean, Kelly Davidson, Donna Ireton, Jo dye, Joyce Nagel, Cora Rupp, Laura Silberman, Kathy Tortorella, Judy Saylor McElynn, Marci Tressel, Susan Knight, Vickie Ebbers, Julie Yeager. Hours: Mon.-Sat., 10am-5pm. Contact: 843/757-2633 or at (http://www.mayerivergallery.com/).

Pluff Mudd Art, 27 Calhoun St., Bluffton. **Ongoing** - Featuring works by Terry Brennan, Bob Berman, Peggy Carvell, Laura Cody, Diane Dean, Cheryl Eppolito, Ed Funk, David Knowlton, Marilyn McDonald, Daurus Niles, Linda Patalive, Jim Renauer, Patti Seldes, Michael

Smalls, Ellen Blair Rogers, Steve White, Pat Wilcox, Carol Williams and Irene K. Williamson. Hours: Mon.-Sat., 10am-5pm. Contact: 843/757-5590.

Preston Pottery Studio, 10 Church Street, Bluffton. **Ongoing** - Featuring above average pottery since 1973 by Jacob Preston. Hours: Tue.-Sat., 10am-5pm. Contact: 843/757-3084.

Camden

Artists' Attic, 930 S Broad St., Camden. **Ongoing** - Featuring a new frame shop and Saturday hours, along with our regular gallery, and cooperative open studios shared by 8 professional artists working in various mediums. Including Dot Goodwin, Jane Hannon, Ann Starnes, Emily Houde, Kathy Redner, Benira Sutphin, Tari Federer, and Deb Maza. Commissions are accepted. Hours: Mon.-Fri., 10am-4pm; Sat., 10am-3pm and by appt. Contact: 803/432-9955 or e-mail at (tarifereder@earthlink.net).

Dovetails, 645 Rutledge Street, Camden. **Ongoing** - Featuring custom bench crafted furniture by Jim Rose. Each piece is made by hand to the client's specifications. Jim works in a variety of woods including heart pine, walnut, cypress, maple, and cherry. Jim also works in exotic woods from South America and Africa. Visitors can watch individual pieces of furniture being built. Every piece has its own personality and becomes an instant heirloom. Hours: Mon.-Sat., 10am-5pm or by appt. Contact: 770/330-5000 or 803/446-3124.

Rutledge Street Gallery, 508 Rutledge St., Camden. **Ongoing** - Featuring original works of art from regional and national artists including Clara Blalock, Elizabeth Barber, Anne Bivens, Yong Chu Chang, Marjorie Greene, Joyce Hall, Seth Haverkamp, Carrie Payne, John Pototschnik, Bob Ransley, Dennis Snell, Maci Scheuer, and many more. Chinese Antique Furniture Pieces. Hours: Tue.-Sat., 11am-5pm. Contact: 803/425-0071 or at (www.rutledgestreetgallery.com).

Charleston

Broad Street, Charleston. Apr. 1, 5-7pm - "First Fridays on Broad," featuring an artwork with the following galleries: Ellis-Nicholson Gallery, Edward Dare Gallery, COCO VIVO, Mary Martin Fine Art, Spencer Galleries, Ella Walton Richardson Fine Art, and Martin Gallery. Contact: Jeannette Nicholson at 843/722-5353 or at (http://www.charlestongalleryrow.com/).

Throughout Historic downtown Charleston. May 6, from 5-8pm - The Charleston Gallery Association ARTWALK. All Charleston Gallery Association galleries will be open with many of the artist in attendance along with refreshments served. Official Charleston Gallery Association ARTWALKS are held four times a year on the first Friday of March, May, October and December from 5 - 8pm. All CGA art galleries will be open. Contact: contact Julie Dunn, President, Charleston Gallery Association by e-mailing to (JulieDunn@CharlestonGalleryAssociation.com), calling 843/312-4550 or visit (www.CharlestonGalleryAssociation.com).

Anglin-Smith Fine Art, 9 Queen Street, corner of Queen & State Streets, Charleston. **Ongoing** - Featuring original works by Betty Anglin Smith, Jennifer Smith Rogers, Tripp Smith, Shannon Smith Hughes, Kim English, Darrell Davis, Colin Page, Carl Plansky, and Victor Chiarizia. Hours: Mon.-Sat., 10am-5pm & Sun. 1-5pm. Contact: 843/853-0708 or at (www.anglinsmith.com).

Ann Long Fine Art, 54 Broad Street, Charleston. **Ongoing** - Classical Realism - still life, figurative work, landscapes and sculpture. The work represented by the gallery spans two generations of contemporary artists trained, in the most prestigious ateliers in Florence, Italy, to use the classical, realist techniques of European Old Master artists: oil paintings and drawings by Ben Long, as well as his studies for fresco; including Charleston artist Jill Hooper's still lifes and recent figure work; and many works by teachers of the Florence Academy, including its founder Daniel Graves. Also, represented are the figurative monotypes from the estate of deceased German Modernist Otto Neumann (1895 - 1975). Hours: Tue.-Sat., 11-5pm and by appt. Contact: 843/577-0447 or at (www.annlongfineart.com).

Artizom Framing & Gallery, 334 E. Bay Street, Suite J, Charleston. **Ongoing** - Featuring the contemporary artwork of Jackie and Charles Ailstock. Hours: Mon.-Fri., 10am-6pm or by appt. Contact: 843/723-3726 or at (www.artizom.com).

Atelier Gallery Charleston, 153 King Street, Charleston. **Ongoing** - The gallery's focus is to support and promote a variety of artists, from the Southeastern region, while merging the clas-

SC Commercial Galleries

Aiken / North Augusta

Lee-Johnston Originals and Art, 401 W. Martintown Rd., on the courtyard of the North Hills Shopping Center, Suite 10, North Augusta. **Ongoing** - Featuring hand-produced fine and decorative art, ranging from limited-edition photographic prints to hand-stitched quilts, by local and regional artists, including: Nancy B. Smith, R.R. Frazier, and Joni-Dee Ross. The gallery also carries books and original greeting cards. Hours: Tue.-Sat., 10am-6pm or by appt. Contact: 803/8198533.

The Artists' Parlor, 126 Laurens Street, N.W., Aiken. **Ongoing** - Featuring fine American crafts and art objects. Hours: Mon.-Sat., 9:30am-5:30pm. Contact: 803/648-4639.

Wild Hare Pottery, 1627 Georgia Avenue at the corner of Alpine Avenue, N. Augusta. **Ongoing** - Featuring handcrafted pottery in porcelain, earthenware, stoneware, and raku by David Stuart. Hours: M-F, 10am-5pm. (Call ahead.) Contact: 803/279-7813.

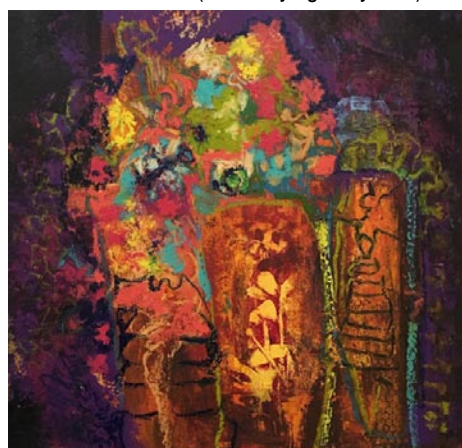
Anderson

Brushstrokes, 1029 S. McDuffie St., Anderson. **Ongoing** - Uniquely painted furniture, faux finishes and original artwork featuring the works of Pamela Tillinghast Sullivan. Hours: Mon.-Tues. or by appt.; Wed.-Fri., 10am-5:30pm. Contact: 864/261-3751.

Beaufort Area

Bay St. Gallery, 719 Bay St., Beaufort. **Ongoing** - Offering original works focusing on many different aspects of what is best about the Lowcountry and celebrating the beautiful fragility of this unique wetlands area. A variety of media, oil, acrylic, pastel, printmaking and sculpture sensitively interprets and conveys the essence of coastal SC. Artists include Jim Draper, Su-

san Graber, Lana Hefner, Mandy Johnson, Susan Mayfield, Marcy Dunn Ramsey, and Taylor Nicole Turner. South Carolina's finest collection of sweetgrass baskets compliments the other works. Hours: Mon.-Sat., 11am-5pm. Contact: 843/522-9210 or at (www.baystgallery.com).



Work by Melba Cooper

Charles Street Gallery, 914 Charles Street, @ Charles & Greene Street, Beaufort. **Apr. 8 - 29** - "PolleNation: Bees, Cold Wax, and Melba Cooper". A reception will be held on Apr. 8, from 5:30-8:30pm. Oil paint and beeswax are a wedding of content and medium in Melba Cooper's new abstract paintings inspired by the Honey Bee. **Ongoing** - Located in a lovingly restored building, we offer custom framing and handcrafted furniture, and feature exhibits by local artists. Hours: Mon.-Fri., 10am-6pm & Sat., 10am-3pm. Contact: 843/521-9054 or at (www.thecharleststreetgallery.com).

I. Pinckney Simons Gallery, LLC, 711 Bay Street, historic downtown Beaufort. **Ongoing** - Featuring fine artists of the South since 1979; paintings, sculpture, jewelry, and mosaic masks. Hours: Tue.-Fri., 11am-4:30pm, & Sat., 11am-3pm. Contact: 843/379-4774 or at (www.ipsgallery.com).