

University of South Carolina in Columbia, SC, Features Works by Jonathan Pellitteri

The University of South Carolina in Columbia, SC, will present *Jonathan Pellitteri: Canary in the Coalmine*, on view in the McMaster Gallery, from Apr. 22 through May 27, 2021.

Pellitteri is an award-winning, North Carolina-based artist working with three dimensional objects and industrial materials. His sculptural and installation practice involves life-size objects and miniature models to engage viewers in curious and explorative ways that stimulate personal narratives and evoke private memories.

His exhibition at McMaster Gallery will explore current debates over humanity's impact on the environment, sustainability, and the exploitation of natural resources. These ideas manifest themselves in objects that illustrate direct observations, comparisons of ancient solutions to similar present day concerns, and hypothetical future events resulting from actions taken in the present.

Pellitteri offered the following artist statement, "My goal is to create an atmosphere of curiosity and exploration with my sculptures. Industrial structures, furniture, architecture, tools, and other familiar objects populate my work. Combining life-size objects and miniature representations I create works that engage the viewer on a human scale as well as contain vast space within their boundaries. Intricate surfaces and interiors construct vignettes that viewers can project themselves inside, stimulating personal narratives and evoking private memories."

"The quasi-architectural/ mechanical appearance of my sculptures combine archaic construction methods with modern techniques and materials, in an effort to demonstrate my appreciation for the immediacy of antiquated technology, as I do my best to embrace the advancements of today," adds



Work by Jonathan Pellitteri

Pellitteri. "It is my hope for viewers, that the carefully considered construction and subtle imperfections of my sculptures will emphasize their difference from the machine-made objects that fill our lives. With the objects I create I impart to the viewer a setting for their imagination to expand upon, informed by their own experiences, and guided by curiosity."

Pellitteri received his Bachelor of Fine Arts, Sculpture and 3-D studies, from University of Massachusetts Dartmouth; his Master of Fine Arts, Studio Art, from Louisiana State University, Baton Rouge, LA; and Studied Abroad in Cortona, Italy, with the University of Georgia, Athens, GA.

Pellitteri is currently managing the UNC Charlotte Department of Art and Art History 3D Studios and Rowe Digital Fabrication Lab.

For further information check our SC Institutional Gallery listings, call the gallery at 803/422-4289 or e-mail to (yukhno@mailbox.sc.edu).

SC State Museum in Columbia, SC, Offers Look at Face Jug Collection

The South Carolina State Museum in Columbia, SC, is presenting an ongoing exhibition, *Early American Face Vessels from the George H. Meyer Collection*.

The traditional American stoneware face vessel has become an iconic art form, with important roots in South Carolina. George H. Meyer's collection of over 100 early American face vessels provides us with the rare opportunity to see the tradition unfold in regions east of the Mississippi River and Texas, from the 1820s to 1940, including 20 early face vessels from South Carolina.

This exhibition shows that potters were not artists working in isolation, but rather interrelated craftsmen and often families sharing ideas and techniques. While these vessels have been the subject of increased scholarship in recent years, they remain somewhat enigmatic. These objects likely served many different functions and many of their makers remain unknown. The vessels in this exhibition demonstrate the artistry, variety, and power of this uniquely American art form.

George H. Meyer started seriously collecting early American face jugs about 35 years ago when David Good, an Ohio dealer he knew, showed up unexpectedly on Christmas day with a group of over twenty early American face jugs, which Meyer bought immediately. Over the years, he has carefully assembled the rest of the collection, while practicing law and publishing two books, *Folk Artists Biographical Index* in 1988 and the award-winning *American Folk Art Canes: Personal Sculpture*, in 1992.

Meyer has served on the board of trustees of the American Folk Art Museum in New York, and was President of the American Folk Art Society. After graduating from the University of Michigan and Harvard Law School and serving as a JAG officer in the Air Force, Meyer moved to Bloomfield Hills, MI, where he lives today with his wife, Kay.

Kay White Meyer was not thrilled with the "guests" at her Christmas dinner but soon became fascinated with the stories of the potters and the inter-relationships in the differ-



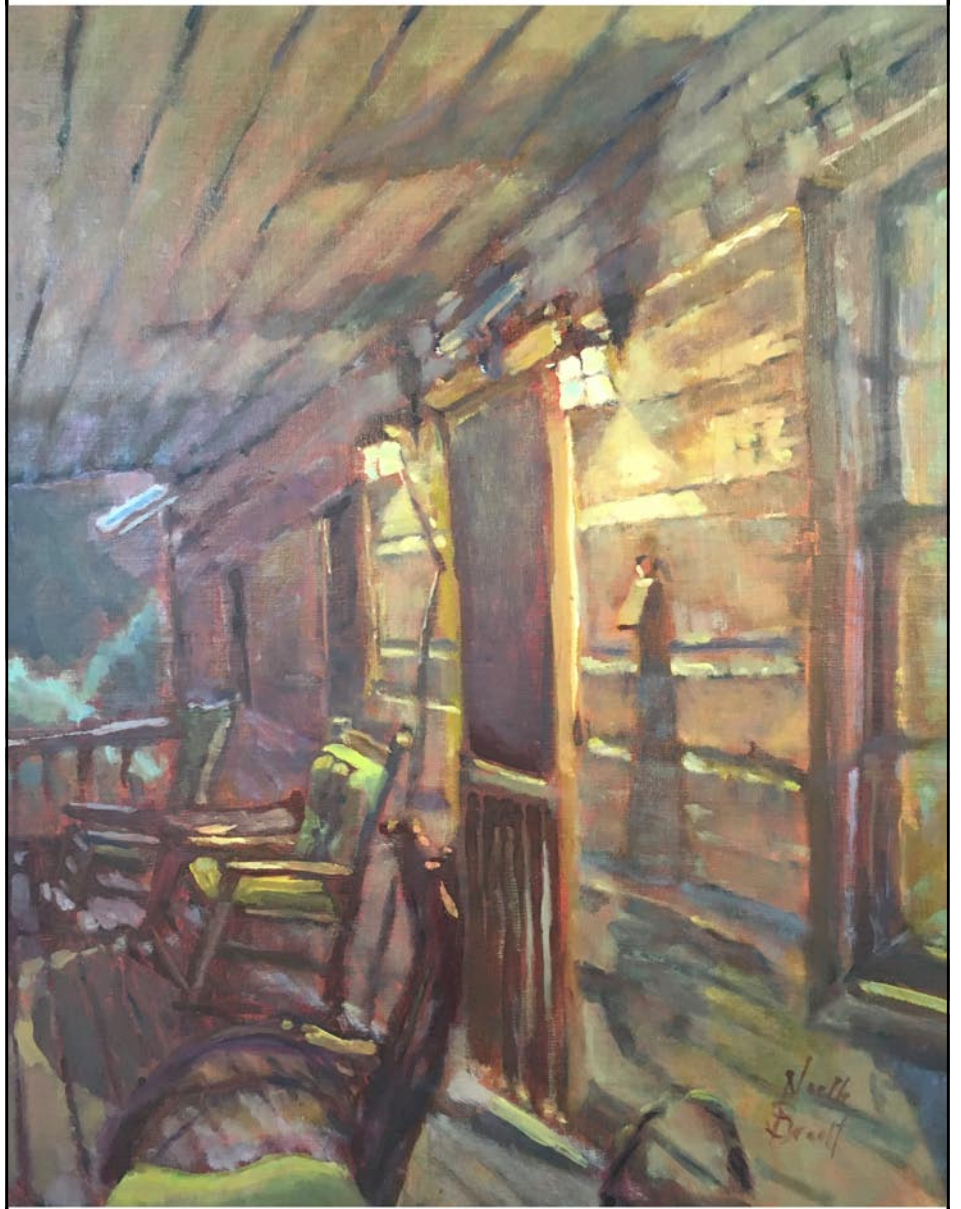
Face Vessel, c. 1840 - 1850, by Landrum Pottery in Horse Creek, SC, Thumb 1024 x 619

ent areas of the country. A graduate of Colby College, she was co-editor with Meyer on their recent book, *Early American Face Vessels*, as well as an associate editor of her husband's two previous publications. Kay served in the Peace Corps in Panama and now volunteers with several organizations in Michigan, including Oakland County's crisis line where she has served on the board and answered crisis calls for 35 years.

The South Carolina State Museum, the state's largest and most comprehensive museum, is located along the banks of the beautiful Congaree River in downtown Columbia, South Carolina. Founded in 1988, the State Museum is the primary storyteller of the history of South Carolina. Through rich and diverse collections displayed through interactive and engaging exhibitions, the State Museum strives to honor the groundbreaking nature of its setting, providing both residents and visitors an in-depth picture of the state's past, present and future. There is much to see and do every day at the State Museum through a variety of exhibitions and educational programs both offered at the museum and through distance learning programs, as well as through entertaining community events of all kind.

For further information check our SC Institutional Gallery listings, call the Museum at 803/898-4921 or visit (<http://scmuseum.org/>).

NOELLE BRAULT FINE ART



WWW.NOELLEBRAULT.COM
SEE MY OTHER WORKS AT:
OVER THE MANTLE GALLERY
HAVENS FRAMEMAKERS & GALLERY
(COLUMBIA, SC.)



MOUSE HOUSE, Inc.

2123 Park Street, Columbia, SC 29201
(803) 254-0842

Weekdays 9:30am - 5pm & Saturday, 10am - 2pm

mouse_house@prodigy.net

<http://mousehouseinc.blogspot.com>

The fiber art studio of Susan Lenz
Also specializing in antiquarian prints and mirrors

www.susanlenz.com



MOUSE HOUSE, Inc.
FIBER ART & ANTIQUE PRINTS