

NC Commercial Galleries

continued from Page 56

The Dirty Bird, 244½ Middle Street, New Bern. **Ongoing** - Featuring an eclectic mix of paintings, ceramic items, jewelry and repaired and painted furniture. Hours: Tue.-Thur., 11am-6pm & Fri.-Sat., 10am-5pm. Contact: 252/626-1983.

The Sanctuary Gallery, 2601-A Trent Rd., New Bern. **Ongoing** - The Sanctuary Gallery is New Bern's newest art gallery and is artist owned and operated representing regional and national artists. The fine art and fine craft gallery has a diverse collection of paintings, drawings, sculpture and hand-crafted jewelry. Representing both regional and national artists. The fine art and fine craft gallery has a diverse collection of paintings, drawings, sculpture and hand-crafted metal jewelry to complement any taste. Hours: Tue.-Thur., 10am-5pm & Fri.-Sat., 10am-6pm. Contact: 252/571-8562 or at (www.theSanctuaryGallery.com).

Ocracoke Island

Village Craftsmen, 170 Howard Street, Ocracoke Island. **Ongoing** - We feature pottery, glass, jewelry, kitchen items, musical instruments, wrought iron, baskets, bells, boxes, soaps, accessories, clothes, games, kaleidoscopes, lawn sprinklers, lamps & lampshades, prints, tin ware, pewter items, tiles and much more - all made by American artists. Hours: Mon.-Sat., 10am-4pm & Sun., 10am-2pm. Contact: 252-928-5541 or at (www.villagecraftsmen.com).

Old Fort



Work from Turtle Island Pottery

Turtle Island Pottery, 2782 Bat Cave Road, Old Fort. **Now** - Turtle Island Pottery Maggie and Freeman Jones. Best place for info about our work is the website at (<http://Turtleislandpottery.com/>) sign up for our newsletter too. Best contact is e-mail or phone...on the website. **Ongoing** - Featuring handmade pottery by Maggie and Freeman Jones, who create one of a kind, functional, decorative stoneware items. From cups to umbrella stands, mirror frames and clocks. Sculptural and inspired by nature, many forms are reminiscent of antique pottery from the arts and crafts movement and art nouveau styles. Hours: Showroom open most Saturdays, call ahead for any day of the week. Contact: 828/669-2713 or at (www.Turtleislandpottery.com).

Oriental

Village Gallery, 300 Hodges Street, Oriental. **Ongoing** - The Village Gallery features the works of more than 40 member and consigned artists. The Gallery is staffed by its resident artists. As a cooperative gallery we offer great values. You buy directly from the juried artists. Hours: Wed.-Sun., 10am-5pm. Contact: 252/249-0300 or at (www.villagegallerync.com).

Outer Banks Area

Pea Island Art Gallery, 27766 NC Hwy. 12, Salvo. **Ongoing** - Featuring handmade works by over 100 Outer Banks artists. Hours: call ahead. Contact: 252/987-2879 or at (www.peaislandartgallery.com).

Pinehurst - Southern Pines Area

Broadhurst Gallery, 2212 Midland Rd., Pinehurst. **Ongoing** - Featuring works by regional, national and international artists. Hours: Tue.-Fri., 11am-5pm & Sat., 1-4pm. Contact: 910/295-4817 or at (www.broadhurstgallery.com).

Hollyhocks Art Gallery, 905 Linden Rd., one mile from Pinehurst next to Elliott's restaurant, Pinehurst. **Ongoing** - Featuring original work

by award winning local artists Jane Casnelie, Diane Kraudelt, Irene McFarland, Paula Montgomery, and Robert Gera. Offering a wide range of work from contemporary to traditional, the gallery includes portraiture, vibrant Tuscan scenes, palpable pet portraits, beautiful florals and more, in a wide variety of mediums including oils, acrylics, pastels and unusual black and white washes. Hours: Mon.-Sat., 10am-9:30pm. Contact: 910/255-0665 or at (www.HollyhockArtGallery.com).

One of a Kind Gallery, LLC, 128 W. Pennsylvania Ave., (Belvedere Plaza) Southern Pines. **Ongoing** - The Gallery is located in what was once an old hotel building (built in 1905). One of a Kind Gallery occupies three "hotel rooms" plus two alcoves, making it ideal for displaying fine art. The works of 25 artists are featured in the Gallery, with a wide range of media represented: photography, painting, pottery, sculpture, notecards, painted silk scarves, basketry, jewelry, scented candles, clocks, and fiber arts. All of the art is for sale. Hours: Tue.-Sat., 10am-5:30pm and open until 7pm on Fri. Contact: 910/725-0465 or at (www.oneofakindgalleryllc.com).

Pittsboro

All In One Pottery, 115 Hobbs Road, Pittsboro. **Ongoing** - The pottery houses an eclectic mix of hand-painted maiolica dinnerware, pitfired & raku vases, and hand-crafted musical instruments by Allen McCanless; as well as pitfired sculptural ceramic artwork by Louise Hobbs McCanless. Hours: by appointment only. Contact: 919/542-6162

Liquidambar Gallery & Gifts, 80 Hillsboro Street, Pittsboro. **Through May 29** - "Minimalistic B&W Photography - Less is More," by John Mecham. **Ongoing** - Featuring the works of gallery owners Kitty and John Mecham. The gallery has also been a showcase for over 85 artists, featuring a wide variety of both 2-D and 3-D arts and crafts during the past 10 years. Hours: Wed.-Sat., 10:30am-5:30pm. Contact: 919/542-1773, e-mail at (liquidambargallery@gmail.com) or at (<http://www.liquidambarstudio.com/>).

123 Art Studios, 123 Beech Forest Way, Pittsboro. **Ongoing** - Featuring the original works of collaborative duo Luna Lee Ray and Shelly Hehenberger, along with nine participating artists of 123 Art Studios, this event will boast an incredibly diverse selection of all new works in a variety of medium. Artists from 123 Art Studios who will have brand new creations on display include: Colleen Black Semelka (raku), Jean Cerasani (fiber & ceramics), RJ Dobs (stone sculpture), Sarah Graham (acrylic painting), Kelly Hudson (wood & other media), Cat Manolis (contemporary design reliquaries & mixed media), William Moore (marble, ceramic, stone, wood & bronze sculpture), Lara O'Keefe (functional pottery), and Nathalie Worthington (acrylic painting). Contact: (www.123artstudios.com).

Pittsboro Gallery of Art, 44-A Hillsboro Street, Pittsboro. **Ongoing** - This gallery is owned and operated by local and regional artists, whose purpose is to exhibit and offer an opportunity for art lovers and patrons to see, purchase and collect fine art and fine crafts. The gallery is spacious, allowing for over 30 artists to show their creations in many media, as well as offer classes. Additionally, the artists wish to raise awareness and appreciation for the visual arts and artistic crafts; promote artistic excellence and contribute to the cultural and economic welfare of the community. Hours: Tue.-Sat., 10:30am-5:30pm and Sun., 11am-5pm. Contact: 919/704-8552 or at (<https://www.pittsboroarts.org/>).

Raleigh Area

ArtSource Fine Art & Framing, 4421-123 Six Forks Road (behind Bonefish Grill, across from Brother's Cleaners at North Hills...look for the red door), Raleigh. **Through Apr. 12** - Featuring works by Anna Vaughn Kincheloe and Stephen Moore. **Ongoing** - ArtSource is a fine art gallery housing over 1,600 works of art by 65+ artists. This award-winning gallery has assisted collectors and businesses in the selection of fine art, custom art pieces and framing for over 20 years. Hours: Mon.-Sat., 10am-6pm and Sun., 1-5pm. Contact: 919/787-9533, or at (www.artsource-raleigh.com).

Ashley's Art Gallery, 701 N. Main St, located 12 miles south of Raleigh, Fuquay-Varina. **Ongoing** - Featuring fine art originals by national and local artist including Terry Isaac, Braldt Bralds and John Weiss and reproductions by Pino, Robert Bateman, Carl Brenders,

Bev Doolittle and William Mangum. Hours: Mon.-Thur., 11am-6pm & Fri.-Sat. 10:30am-5pm. Contact: 919/552-7533 ext.3 or at (www.ashleyart.com).

Flanders Gallery, 505 S. Blount Street, Raleigh. **Ongoing** - Flanders Gallery is committed to cultivating the careers of emerging artists. Through its rigorous exhibition program, the gallery continues to explore new concepts in contemporary art using various media. Flanders Gallery is dedicated to exhibiting provocative and innovative contemporary art, producing 14-18 exhibits each year both in the gallery and in alternative exhibit spaces. Hours: Wed.-Sat., 11am-6pm. Contact: 919/757-9533 or at (<http://flandersartgallery.com>).

Gallery C, 540 North Blount Street, Raleigh. **Through May 4** - "Best of North Carolina". Gallery owner, art historian, and North Carolina native Charlene Newsom employs her broad knowledge of NC art to curate an extensive collection celebrating the best and brightest NC artists of past and present. The show includes landmark pieces by influential North Carolina artists. Some of the biggest names and most important North Carolina art, including Claude Howell, Warren Brandt, Mary Anne Keel Jenkins, Horace Farlowe, and many more. **Ongoing** - Gallery C brings talented artists and fine art to the attention of serious private collectors and museums. Since 1985, Gallery C has established itself as one of the Southeast's leading fine art galleries in Raleigh, NC. Open by appt. only. Hours: Tue.-Fri., noon-6pm; Sat., 11am-5pm & Sun., 1-5pm. Contact: 919/828-3165 or at (www.galleryc.net).

Glenwood Gallery Art & Antiques, 610 W. Johnson St., Raleigh. **Ongoing** - Featuring works by Edwin D. Alexander, Barbara Evans, Michael Manas, Nancee Clark, Michael Van Horn, Rob Cox, Jim Green, Stan Strikland, Mark Tomczyk. Hours: Call. Contact: 919/829-7202.

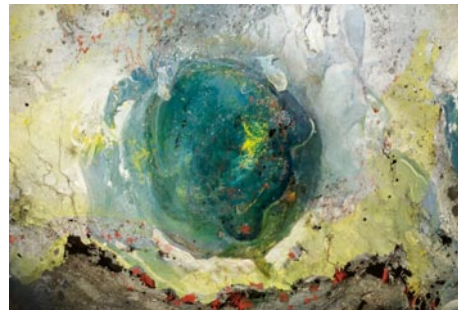
Litmus Gallery & Studios, 312 W. Cabarrus Street, (across the tracks from Amtrak Train Station) Raleigh. **Ongoing** - Regional emerging and/or established artists are featured every month with a reception from 6-9pm the first Friday of each month. Studios of resident artists are open for touring, viewing, and selling of art (paintings, sketches, sculptures, pottery, mixed media, photography, etc.). Hours: Thur., 10am-2pm or by appt. Contact: 919/571-3605 or at (www.litmusgallery.com).

Local Color Gallery, Carter Building, 22 South Glenwood Ave., Raleigh. **Ongoing** - The gallery has now grown into a women's artist cooperative 13 members strong. Hours: Thur., Fri., & Sat., 11am-3pm. Contact: 919/754-3887 or at (www.localcolorraleigh.com).

The Mahler Fine Art, Mahler Building, 228 Fayetteville St., Raleigh. **Ongoing** - Featuring a dynamic venue dedicated to significant art of our time, committed to offering the best in regional and national fine art by emerging and established artists. Hours: Tue.-Fri., 11am-5pm or by appt. Contact: 919/896-7503 or at (www.themahlerfineart.com).

311 - Martin St Gallery and Studios, 311 Martin Street, Warehouse District, Raleigh. **Ongoing** - Featuring three exhibit galleries, studios by tenant artists, The Print Studio, and the meeting place for The North Carolina Printmakers. Hours: Tue.-Sat., 11am-6pm and 6-9pm on 1st Friday of the month. Contact: 919/821-2262 or at (<http://311gallery.com/>).

The Centerpiece Gallery, 719 N. Person Street, Raleigh. **Ongoing** - Featuring fine art, custom framing and workshops. Hours: Tue.-Fri., 10am-5pm; Sat., 11am-6pm or by appt. Contact: 919/838-8580 or at (www.thecenterpiece.com).



Work by Olivia Gatewood

Triangle Cultural Art Gallery, 8320 Litchford Road, Suite 138 Raleigh. **Through May 2** - "I AM," featuring works by Jason Franklin. **Ongoing** - The Triangle Cultural Art Gallery cultivates and exhibits art that reflects the triangle's diverse cultural heritage and artistic expression. Through the engagement of cultural art awareness and events, we help build our local community. Hours: Tue.-Fri., 10am-6pm & Sat., 9am-5pm. Contact: call 919/900-8055 or at (www.triangleculturalart.com).

Randleman

Joseph Sand Pottery, 2555 George York Road, Randleman. **Ongoing** - Featuring wood-fired, salt and ash glazed pottery by Joseph Sand at kiln openings held three times each year. Hours: by appt. only. Contact: 612/518-4051 or 336/460-0259 and at (<http://www.jsspottery.com/>).

New Salem Pottery, 789 New Salem Road, Randleman. **Ongoing** - Established in 1972, New Salem Pottery is owned and operated by Hal Pugh and Eleanor Minnock-Pugh. Hal and Eleanor produce a variety of original redware and stoneware pottery. Years of work at the wheel and the subtle evolutionary convergence of originality with past traditions make their pottery recognizable by its own style. The slip decorated redware pitcher shown above is illustrative of their art. Hours: Wed.-Sat., 10am-5pm. Contact: 336/498-2178 or at (www.newsalempottery.com).

Rutherfordton

Ornaments and Finer Welding, Inc., 142 West Court St., Rutherfordton. **Ongoing** - Featuring works by master artisan Tom Elfers. Hours: Mon.-Fri., 9am-5pm and Sat., 10am-5pm. Contact: 828/288-3001 or at (www.ornametals1.com).

Salisbury/Spencer

Green Goat Gallery, 516 S. Salisbury Ave., just off I-85, across from the North Carolina Transportation Museum, Spencer. **Ongoing** - Housed in the historic 20th century Sands Building, the gallery features fine and folk art, photography, exquisite handcrafted functional crafts and jewelry, and eclectic recycled and found art by local, regional, and national artists. Hours: Tue.-Sat., 10:30am -5:30pm. Contact: 704/639-0606 or at (www.greengoat-gallery.com).

Pottery 101, 101 S. Main St., from I-85, take exit #76 (Innes St.) toward downtown - we are on the corner of Innes and Main, Salisbury. **Ongoing** - The destination for beautiful hand-crafted pottery. Hours: Tue.-Fri., 10am-6pm & Sat., 10am-5pm. Contact: 704/209-1632.

Rail Walk Studios & Gallery, 409 - 413 N Lee St., in the Rail Walk Arts District, Salisbury. **Ongoing** - Featuring works on display by Marietta F. Smith, Sharon Forthofer, Karen Frazer, Kenneth Koskela, Elizabeth H. McAdams, Julie Pontell and Keyth Kahrs. Each of the artists has a unique style and body of work. Visitors will find original art in oil, acrylic, watercolor, pastel, and other mediums, as well as sculpture, hand-made jewelry, pottery, and digital photography, making Rail Walk a great place to purchase a wide variety of original art in all price ranges. Hours: Thur.-Sat., 11am-4pm. Contact: 704/431-8964 or at (www.railwalkgallery.com).

Saluda Area

Heartwood Contemporary Crafts Gallery, 21 East Main Street, Saluda. **Ongoing** - Featuring contemporary works of handmade wearables, jewelry, paper, paintings, fine porcelain, stoneware, glass, metal and wood. Hours: Mon.-Sat., 10am-5pm & Sun., noon-5pm. Contact: 828/749-9365 or at (www.heartwoodsaluda.com).

Seagrove Area



Work by Ben Owen III

Throughout the Seagrove area, Apr. 16 - 18, 2021 - "13th Annual Celebration of Seagrove Potters Spring Pottery Tour & Kiln Openings". Over 50 Seagrove Potteries offering special events, kiln openings, studio tours, pottery sales, and demonstrations. The annual "Celebration of Spring in Seagrove" is a self-guided tour of individual pottery galleries, studios and workshops. It is held at participating shops located from the downtown city center and throughout the country side. Over 55 local potters will host kiln openings, studio tours, demonstrations. Spring has always been a time for renewal and awakening in Seagrove and this year an unprecedented number of

continued on Page 58